

UNITED STATES
DEPARTMENT OF THE INTERIOR
BUREAU OF LAND MANAGEMENT

SUBMIT IN TRIPLICATE*

(Cover instructions on reverse side)

FORM APPROVED

OMB NO. 1004-0136

Expires: February 28, 1995

APPLICATION FOR PERMIT TO DRILL OR DEEPE

1a. TYPE OF WORK

DRILL ☒

DEEPE ☐

b. TYPE OF WELL

OIL WELL ☐

GAS WELL ☒

OTHER

SINGLE ZONE ☒

MULTIPLE ZONE ☐

2. NAME OF OPERATOR

Cross Timbers Operating Company

3. ADDRESS AND TELEPHONE NO.

2700 Farmington Ave., Bldg. K. Ste 1 Farmington, NM 87401

4. LOCATION OF WELL (Report location clearly and in accordance with any State requirements)

At surface

1.980' FNL & 1.975' FWL

At proposed prod. zone

14. DISTANCE IN MILES AND DIRECTION FROM NEAREST TOWN OR POST OFFICE*

Approx 12 miles southeast of the Bloomfield Post Office

15. DISTANCE FROM PROPOSED*

LOCATION TO NEAREST

PROPERTY OR LEASE LINE, FT.

(Also to nearest drilg. unit line, if any) 1,975'

18. DISTANCE FROM PROPOSED LOCATION*
TO NEAREST WELL, DRILLING COMPLETED,
OR APPLIED FOR, ON THIS LEASE, FT.

500'

16. NO. OF ACRES IN LEASE

17. NO. OF ACRES ASSIGNED
TO THIS WELL

160 NW/4

19. PROPOSED DEPTH

2,200' -

20. ROTARY OR CABLE TOOLS

Rotary Tools

21. ELEVATIONS (Show whether DF, RT, GR, etc.)

6,152' GL -

22. APPROX. DATE WORK WILL START*

July 2000

23. PROPOSED CASING AND CEMENTING PROGRAM

SIZE OF HOLE	GRADE, SIZE OF CASING	WEIGHT PER FOOT	SETTING DEPTH	QUANTITY OF CEMENT
8-3/4"	7", J-55	20.0#	200'	75 sx Type III cmt, circ to surface
6-1/4"	4-1/2", J-55	10.5#	2,200' -	220 sx Premium Lite cmt.

Cross Timbers plans to drill the above mentioned well as described in the enclosed Surface Use Program.

This action is subject to technical and
procedural review pursuant to 43 CFR 3160.3
and appeal pursuant to 43 CFR 3160.4.

DEVELOPMENT OF A WELL AUTHORIZED ARE
SUCH AS TO COMPLY WITH ATTACHED
"REQUIREMENTS"

IN ABOVE SPACE DESCRIBE PROPOSED PROGRAM: If proposal is to deepen, give data on present productive zone and proposed new productive zone. If proposal is to drill or deepen directionally, give pertinent data on subsurface locations and measured and true vertical depths. Give blowout preventer program, if any.

24.

SIGNED

TITLE Drilling Engineer

DATE 5/4/00

(This space for Federal or State office use)

PERMIT NO.

APPROVAL DATE

Application approval does not warrant or certify that the applicant holds legal or equitable title to those rights in the subject lease which would entitle the applicant to conduct operations thereon.

CONDITIONS OF APPROVAL, IF ANY:

10000

JUN 22 2000

APPROVED BY

Jim Lovato

TITLE

DATE

*See Instructions On Reverse Side

Title 18 U.S.C. Section 1001, makes it a crime for any person knowingly and willfully to make to any department or agency of the United States any false, fictitious or fraudulent statements or representations as to any matter within its jurisdiction.

District I
PO Box 1980, Hobbs, NM 88241-1980

District II
PO Drawer DD, Artesia, NM 88211-0719

District III
1000 Rio Brazos Rd., Aztec, NM 87410

District IV
PO Box 2088, Santa Fe, NM 87504-2088

State of New Mexico
Energy, Minerals & Natural Resources Department

OIL CONSERVATION DIVISION
PO Box 2088
Santa Fe, NM 87504-2088

Form C-102
Revised February 21, 1994
Instructions on back
Submit to Appropriate District Office
State Lease - 4 Copies
Fee Lease - 3 Copies

☒ AMENDED REPORT

WELL LOCATION AND ACREAGE DEDICATION PLAT

*API Number 30-045-30232		*Pool Code 77200-	*Pool Name FULCHER KUTZ PICTURED CLIFFS-
*Property Code 26128	*Property Name J.C. DAVIDSON		*Well Number 2R
*OGRID No. 167067	*Operator Name CROSS TIMBERS OPERATING COMPANY		*Elevation 6152'

¹⁰ Surface Location

UL or lot no.	Section	Township	Range	Lot Idn	Feet from the	North/South line	Feet from the	East/West line	County
F	28	28N	10W		1980	NORTH	1975	WEST	SAN JUAN

¹¹ Bottom Hole Location If Different From Surface

UL or lot no.	Section	Township	Range	Lot Idn	Feet from the	North/South line	Feet from the	East/West line	County

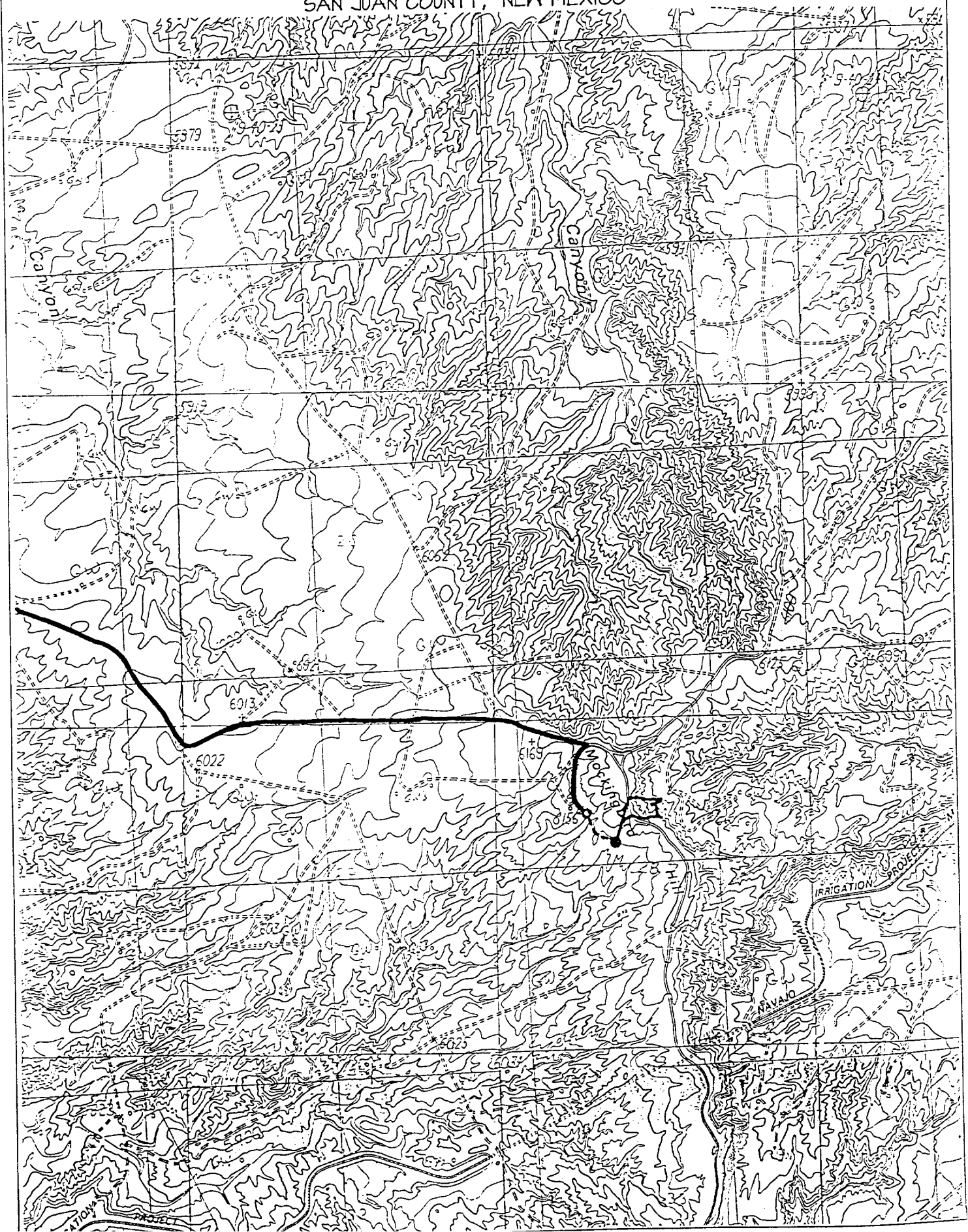
¹² Dedicated Acres 160 NW/4	¹³ Joint or Infill	¹⁴ Consolidation Code	¹⁵ Order No.
---	-------------------------------	----------------------------------	-------------------------

NO ALLOWABLE WILL BE ASSIGNED TO THIS COMPLETION UNTIL ALL INTERESTS HAVE BEEN CONSOLIDATED
OR A NON-STANDARD UNIT HAS BEEN APPROVED BY THE DIVISION

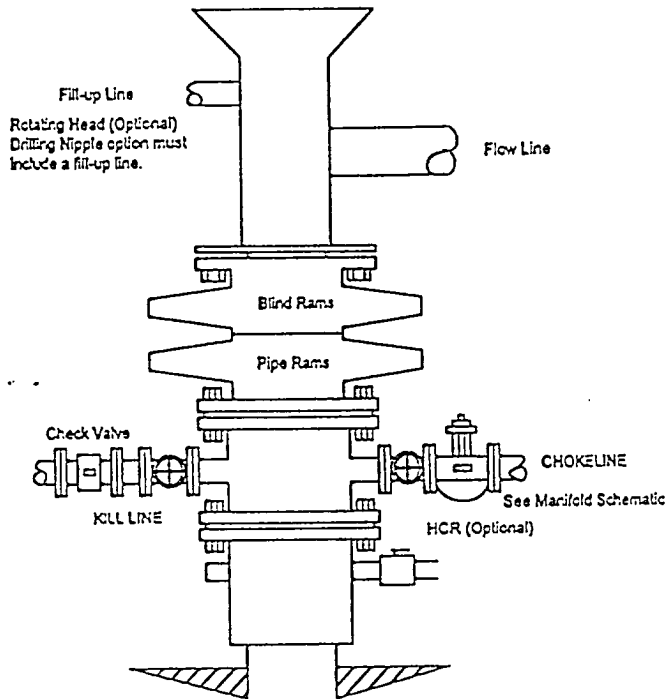
<div><p>¹⁵</p><p>5278.40'</p><p>1980'</p><p>1975'</p><p>5280.00'</p><p>28</p><p>5281.32'</p></div>	<p>¹⁷ OPERATOR CERTIFICATION</p> <p>I hereby certify that the information contained herein is true and complete to the best of my knowledge and belief.</p> <p>Signature <u>Jeff Patton</u></p> <p>Printed Name <u>Jeff Patton</u></p> <p>Title <u>Production Engineer</u></p> <p>Date <u>3/17/00</u></p>
	<p>¹⁸ SURVEYOR CERTIFICATION</p> <p>I hereby certify that the well location shown on this plat was plotted from field notes of actual surveys made by me or under my supervision, and that the same is true and correct to the best of my belief.</p> <p>MARCH 17, 2000</p> <p>Date of Survey</p> <p>Signature and Seal of Registered Professional Surveyor <u>NEALE C. EDWARDS</u></p> <p>Certificate Number <u>6857</u></p>

1980' FNL & 1975' FWL, SECTION 28, T28N, R10W, N.M.P.M.
SAN JUAN COUNTY, NEW MEXICO

1980' FNL & 1975' FWL, SECTION 28, T28N, R10W, N.M.P.M.
SAN JUAN COUNTY, NEW MEXICO



BOPE SCHEMATIC FOR DRILLING OPERATIONS
 CLASS 1 - NORMAL PRESSURE
 CROSS TIMBERS OPERATING COMPANY STANDARD



CHOKE MANIFOLD SCHEMATIC FOR DRILLING OPERATIONS
 2M SERVICE
 CROSS TIMBERS OPERATING COMPANY STANDARD

