

UNITED STATES  
DEPARTMENT OF THE INTERIOR  
BUREAU OF LAND MANAGEMENT

SUBMIT IN TRIPLICATE\*  
(Other instructions on  
reverse side)

FORM APPROVED  
OMB NO. 1004-0136  
Expires: February 28, 1995

APPLICATION FOR PERMIT TO DRILL OR DEEPEN

1a. TYPE OF WORK <b>DRILL</b> <input checked="" type="checkbox"/> <b>DEEPEN</b> <input type="checkbox"/>		5. LEASE DESIGNATION AND SERIAL NO. <del>SW-958</del> <b>SF-0970394</b>
b. TYPE OF WELL OIL WELL <input type="checkbox"/> GAS WELL <input checked="" type="checkbox"/> OTHER <input type="checkbox"/> SINGLE ZONE <input checked="" type="checkbox"/> MULTIPLE ZONE <input type="checkbox"/>		6. IF INDIAN, ALLOTTEE OR TRIBE NAME
2. NAME OF OPERATOR <b>Cross Timbers Operating Company</b>		7. UNIT AGREEMENT NAME <b>22756</b>
3. ADDRESS AND TELEPHONE NO. <b>2700 Farmington Ave., Bldg. K. Ste 1 Farmington, NM 87401</b>		8. FARM OR LEASE NAME, WELL NO. <b>KUTZ FEDERAL #11E</b>
4. LOCATION OF WELL (Report location clearly and in accordance with any State requirements*) <b>1,200' FNL &amp; 1,400' FWL</b> At surface At proposed prod. zone		9. API WELL NO. <b>30-045-30764</b>
14. DISTANCE IN MILES AND DIRECTION FROM NEAREST TOWN OR POST OFFICE* <b>This well is located approx 23 southeast of the Bloomfield NM post office</b>		10. FIELD AND POOL, OR WILDCAT <b>Basin Dakota</b>
15. DISTANCE FROM PROPOSED* LOCATION TO NEAREST PROPERTY OR LEASE LINE, FT. (Also to nearest drilg. unit line, if any) <b>1,200'</b>		11. SEC., T., R., M., OR BLK. AND SURVEY OR AREA <b>C Sec 20, T28N, R10W</b>
16. NO. OF ACRES IN LEASE <b>320</b>		12. COUNTY OR PARISH <b>San Juan</b>
17. NO. OF ACRES ASSIGNED TO THIS WELL <b>320</b>		13. STATE <b>NM</b>
18. DISTANCE FROM PROPOSED LOCATION* TO NEAREST WELL, DRILLING, COMPLETED, OR APPLIED FOR, ON THIS LEASE, FT. <b>675'</b>		19. PROPOSED DEPTH <b>6925'</b>
20. ROTARY OR CABLE TOOLS <b>0-6975' Rotary Tools</b>		21. APPROX. DATE WORK WILL START* <b>Oct. 2001</b>
22. ELEVATIONS (Show whether DF, RT, GR, etc.) <b>5988' Ground Level</b>		

PROPOSED CASING AND CEMENTING PROGRAM				
SIZE OF HOLE	GRADE SIZE OF CASING	WEIGHT PER FOOT	SETTING DEPTH	QUANTITY OF CEMENT
12-1/4"	8-5/8" J-55	24 #/ft	+ -350'	+ - 245 sx c1 B cmt
7-7/8"	4-1/2", J-55	10.5 #/ft	+ -6925'	+ - 715 sx cmt

This action is subject to technical and procedural review pursuant to 43 CFR 3165.3 and appeal pursuant to 43 CFR 3165.4.

ALL ACTIONS AUTHORIZED ARE SUBJECT TO COMPLIANCE WITH ATTACHED "GENERAL REQUIREMENTS"

Cross Timbers plans to drill the above mentioned well as described in the enclosed Surface Use Program.

IN ABOVE SPACE DESCRIBE PROPOSED PROGRAM: If proposal is to deepen, give data on present productive zone and proposed new productive zone. If proposal is to drill or deepen directionally, give pertinent data on subsurface locations and measured and true vertical depths. Give blowout preventer program, if any.

SIGNED JWP Patton TITLE Drilling Engineer DATE 7/17/01

(This space for Federal or State office use)

PERMIT NO. \_\_\_\_\_ APPROVAL DATE 12/17/01

Application approval does not warrant or certify that the applicant holds legal or equitable title to those rights in the subject lease which would entitle the applicant to conduct operations thereon.

CONDITIONS OF APPROVAL, IF ANY:

APPROVED BY DJ Mankiewicz TITLE AFM DATE 12/17/01

\*See Instructions On Reverse Side

Title 18 U.S.C. Section 1001, makes it a crime for any person knowingly and willfully to make to any department or agency of the United States any false, fictitious or fraudulent statements or representations as to any matter within its jurisdiction.

NMCOO

STRICT I  
O. Box 1980, Hobbs, N.M. 88241-1980

STRICT II  
O. Drawer DO, Artesia, N.M. 88211-0719

STRICT III  
OO Rio Brazos Rd., Aztec, N.M. 87410

STRICT IV  
O Box 2088, Santa Fe, NM 87504-2088

State of New Mexico  
g. Minerals & Natural Resources Department

OIL CONSERVATION DIVISION

P.O. Box 2088  
Santa Fe, NM 87504-2088

Form C-102

Revised February 21, 1994

Instructions on back

Submit to Appropriate District Office

State Lease - 4 Copies

Fee Lease - 3 Copies

☐ AMENDED REPORT

WELL LOCATION AND ACREAGE DEDICATION PLAT

<sup>1</sup> API Number 30-045-30764		<sup>2</sup> Pool Code		<sup>3</sup> Pool Name BASIN DAKOTA	
<sup>4</sup> Property Code 22756		<sup>5</sup> Property Name KUTZ FED.			<sup>6</sup> Well Number 11E
<sup>7</sup> GRID No. 2167067		<sup>8</sup> Operator Name CROSS TIMBERS OPERATING CO.			<sup>9</sup> Elevation 5988'

<sup>10</sup> Surface Location

UL or lot no.	Section	Township	Range	Lot Idn	Feet from the	North/South line	Feet from the	East/West line	County
C	20	28-N	10-W		1200'	NORTH	1400'	WEST	SAN JUAN

<sup>11</sup> Bottom Hole Location If Different From Surface

UL or lot no.	Section	Township	Range	Lot Idn	Feet from the	North/South line	Feet from the	East/West line	County

<sup>12</sup> Dedicated Acres 320	<sup>13</sup> Joint or Infill W/2 I	<sup>14</sup> Consolidation Code	<sup>15</sup> Order No.
--------------------------------------	---	----------------------------------	-------------------------

NO ALLOWABLE WILL BE ASSIGNED TO THIS COMPLETION UNTIL ALL INTERESTS HAVE BEEN CONSOLIDATED  
OR A NON-STANDARD UNIT HAS BEEN APPROVED BY THE DIVISION

	<p>17 OPERATOR CERTIFICATION</p> <p>I hereby certify that the information contained herein is true and complete to the best of my knowledge and belief</p> <p>Signature: <u>Jeffrey W. Patton</u></p> <p>Printed Name: <u>JEFFREY W. PATTON</u></p> <p>Title: <u>DRILLING ENGINEER</u></p> <p>Date: <u>Z-15-01</u></p>
	<p>18 SURVEYOR CERTIFICATION</p> <p>I hereby certify that the well location shown on this plat was plotted from field notes of actual surveys made by me or under my supervision and that the same is true and correct to the best of my belief.</p> <p>Date of Survey: <u>1-3-01</u></p> <p>Signature and Seal of Professional Surveyor: <u>[Signature]</u></p> <p>Certificate Number: <u>8894</u></p>

CROSS MEMBERS OPERATING COMPANY

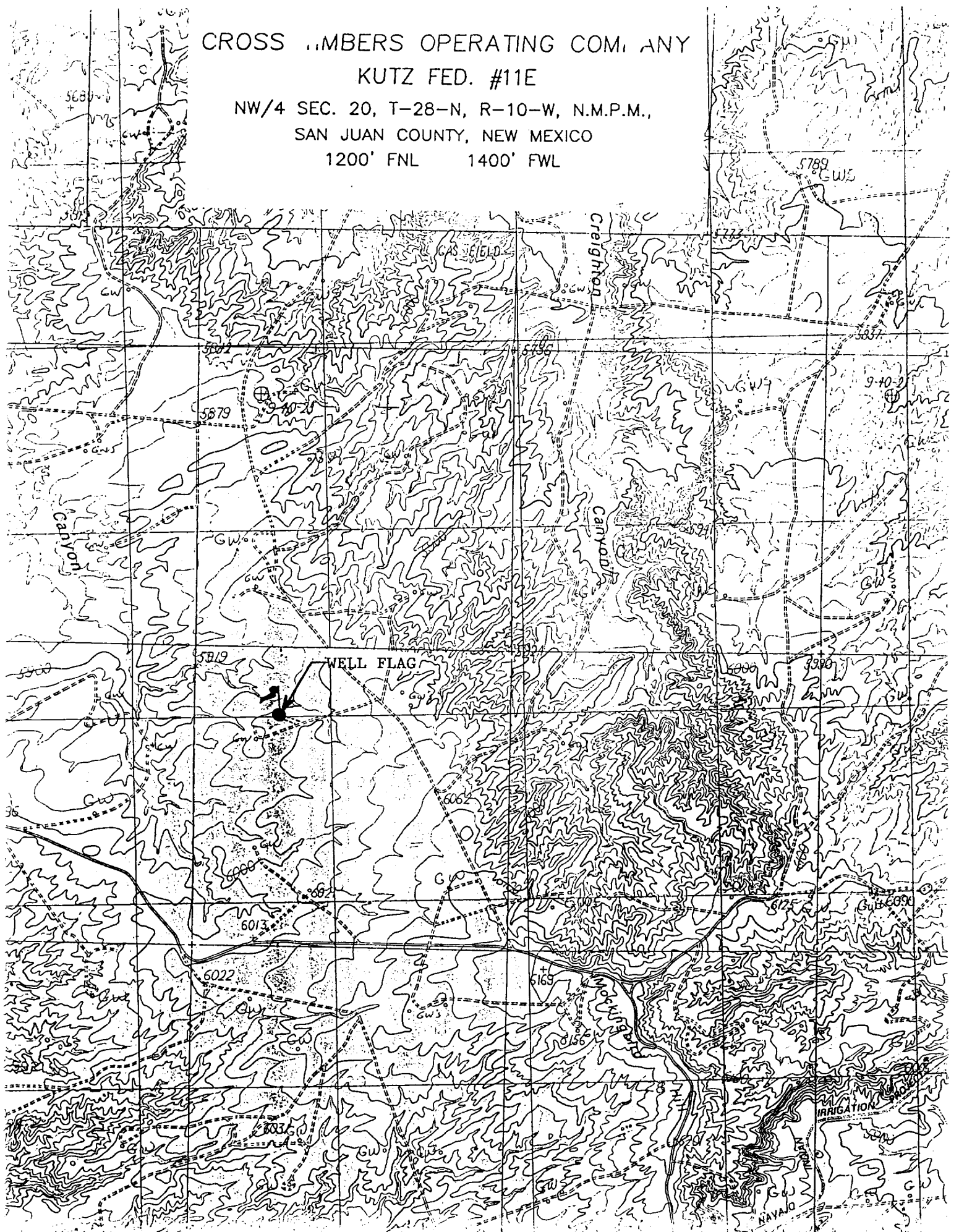
KUTZ FED. #11E

NW/4 SEC. 20, T-28-N, R-10-W, N.M.P.M.,

SAN JUAN COUNTY, NEW MEXICO

1200' FNL

1400' FWL



**4. CEMENT PROGRAM (Slurry design may change slightly, but the plan is to circulate cement to surface on both casing strings):**

A. Surface: 8-5/8", 24#, J-55, STC casing to be set at  $\pm 350'$ .

245 sx of Class "B" cement containing 2%  $\text{CaCl}_2$ , 1/4 pps celloflake, mixed at 15.6 ppg, 1.18  $\text{ft}^3/\text{sk}$ , & 5.20 gal wtr/sk.

*Total slurry volume is 289  $\text{ft}^3$ , 100% excess of calculated annular volume to 350'.*

B. Production: 4-1/2", 10.5#, J-55, STC casing to be set at  $\pm 6,925'$ .

505 sx of Lite-Crete cement (proprietary blend) containing 1/4 pps celloflake mixed at 9.5 ppg, 2.52  $\text{ft}^3/\text{sk}$ , 11.50 gal wtr/sx followed by 200 sx 50/50 class "G" with poz, 6 % gel, 1/4#/sx cellofalke, 0.2% dispersant & 0.2% fluid loss additive mixed at 13.0 ppg, 1.42 cuft/sx, 9.85 gal/sx.

*Total estimated slurry volume for the 4-1/2" production casing is 1,555  $\text{ft}^3$  (no excess).*

*Note: The slurry design may change slightly based upon actual conditions. Final cement volumes will be determined from the caliper logs plus 30%. It will be attempted to circulate cement to the surface.*

**5. LOGGING PROGRAM:**

A. Mud Logger: The mud logger will come on at 5,200' and will remain on the hole until TD. The mud will be logged in 10' intervals.

B. Open Hole Logs as follows: Run Array Induction/SFL/GR/SP fr/TD to the bottom of the surface csg. Run Neutron/Lithodensity/Pe/GR/Cal from TD to 5,000'. FMI log will be run from  $\pm 6,875'$  to 6,375'.



**Cross Timbers Operating Company**

# **BOP SCHEMATIC FOR DRILLING OPERATIONS CLASS 1 (2M) NORMAL PRESSURE**

## **TESTING PROCEDURE**

1. Test BOP after installation:

Pressure test BOP to 200-300  
psig (low pressure) for 5 min.

Test BOP to Working Press or  
to 70% internal yield of surf csg  
(10 min).

2. Test operation of (both) rams  
on every trip.

3. Check and record Accumulator  
pressure on every tour.

4. Re-pressure test BOP stack after  
changing out rams.

5. Have kelly cock valve with handle available.

6. Have safety valve and subs to fit all sizes of  
drill string.

