

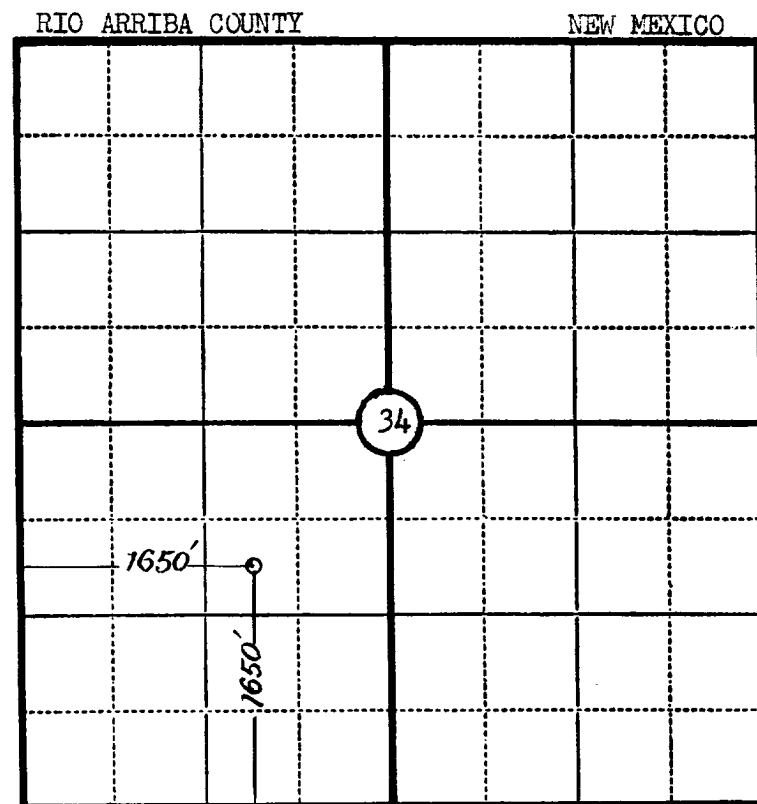
Company PACIFIC NORTHWEST PIPELINE CORPORATION

Lease Well No.

Sec. 34, T. 29 N., R. 3 W., N.M.P.M.

Location 1650' FROM THE SOUTH LINE AND 1650' FROM
THE WEST LINE.

Elevation 7063.1 GRADED GROUND.



N
—

Scale—4 inches equal 1 mile.

This is to certify that the above plat was prepared from field notes of actual surveys made by me or under my supervision and that the same are true and correct to the best of my knowledge and belief.

Seal:

James P. Leese

Registered Land Surveyor.

James P. Leese

N. Mex. Reg. No. 1463

Surveyed 20 October, 1955

SAN JUAN ENGINEERING COMPANY, FARMINGTON, N. M.