

UNITED STATES
DEPARTMENT OF THE INTERIOR

BUREAU OF LAND MANAGEMENT *file Cont. #500*

30-039-23904
Form approved.
Budget Bureau No. 1004-0136
Expires August 31, 1985

APPLICATION FOR PERMIT TO DRILL, DEEPEN, OR PLUG BACK

1a. TYPE OF WORK

DRILL ☒

DEEPEN ☐

PLUG BACK ☐

b. TYPE OF WELL

OIL
WELL ☒

GAS
WELL ☒

OTHER

SINGLE
ZONE ☒

MULTIPLE
ZONE ☒

2. NAME OF OPERATOR

Union Oil Company of California

3. ADDRESS OF OPERATOR

P. O. Box 2620 - Casper, WY 82602-2620

4. LOCATION OF WELL (Report location clearly and in accordance with any State requirements.)

At surface

2250' FNL & 510' FEL (SE SE NE)

At proposed prod. zone

2250' FNL & 510' FEL (SE SE NE)

14. DISTANCE IN MILES AND DIRECTION FROM NEAREST TOWN OR POST OFFICE*

14 miles southwest of Dulce, New Mexico

15. DISTANCE FROM PROPOSED*

LOCATION TO NEAREST

PROPERTY OR LEASE LINE, FT.

(Also to nearest drig. unit line, if any)

510'

18. DISTANCE FROM PROPOSED LOCATION*

TO NEAREST WELL, DRILLING, COMPLETED,

OR APPLIED FOR, ON THIS LEASE, FT.

None

16. NO. OF ACRES IN LEASE

2567.60

17. NO. OF ACRES ASSIGNED

TO THIS WELL

4000 - 500 1600

19. PROPOSED DEPTH

12,900'

20. ROTARY OR CABLE TOOLS

Rotary

21. ELEVATIONS (Show whether DF, RT, GR, etc.)

DRILLING OPERATIONS AUTHORIZED ARE 457' GR (Ungraded) *7457*

SUBJECT TO COMPLIANCE WITH ATTACHED

"GENERAL REQUIREMENTS".

22. APPROX. DATE WORK WILL START*

Immediately Upon Approval

PROPOSED CASING AND CEMENTING PROGRAM

SIZE OF HOLE	SIZE OF CASING	WEIGHT PER FOOT	SETTING DEPTH	QUANTITY OF CEMENT	Expected
17-1/4"	13-3/8"	48#	400'	400 sx	Cmt. Top
12-1/4"	10-3/4"	45.5-55#	6680'	1500 sx	Surface
9-1/2"	7-5/8" L.	29.7#	6480-7630'	Volume to top of Liner	6480'
6-1/2"	5" L.	15-18#	7430-12,900'	350 sx	7430'

This action is subject to technical and
procedural review pursuant to 43 CFR 3165.3
and appeal pursuant to 43 CFR 3165.4.

PROPOSED DRILLING PROGRAM

Drill 17-1/4" hole to 400'. Run and cement 13-3/8" casing. Drill 12-1/4" hole to 6,680'. Run and cement 10-3/4" casing. Drill 9-1/2" hole to 7,630' with air. Run and cement 7-5/8" liner from 6,480' to 7,630'. Drill 6-1/2" hole with mud from 7,630' to 12,900' T.D. Log and if productive, run and cement 5" liner from 7,430' to 12,900'. Run 7-5/8" tie-back string from 6,680' to surface (if warranted). Complete with 2-7/8" tubing. The well will be cored and drill stem tests run as warranted.

IN ABOVE SPACE DESCRIBE PROPOSED PROGRAM: If proposal is to deepen or plug back, give data on present productive zone and proposed new productive zone. If proposal is to drill or deepen directionally, give pertinent data on subsurface locations and measured and true vertical depths. Give blowout preventer program, if any.

24. SIGNED *R. P. Ladd, Jr.* District Drilling Supt.

(This space for Federal or State use)

PERMIT NO.

APPROVAL DATE

APPROVED BY

CONDITIONS OF APPROVAL, IF ANY:

OIL CON. DIV.
DIST. 3

NMOCC

*See Instructions On Reverse Side

Title 18 U.S.C. Section 1001, makes it a crime for any person knowingly and willfully to make to any department or agency of the United States any false, fictitious or fraudulent statements or representations as to any matter within its jurisdiction.

APPROVED
DATE *9-3-85*
AS AMENDED
SEP 30 1985
DATE *7/8/ J. Stan McKee*
AREA MANAGER
FARMINGTON RESOURCE AREA

NEW MEXICO OIL CONSERVATION COMMISSION
WELL LOCATION AND ACREAGE DEDICATION PLAT

Form O-102
Supersedes O-128
Effective 1-1-65

All distances must be from the outer boundaries of the Section

Operator UNION OIL COMPANY OF CALIFORNIA			Lease JICARILLA H9		Well No. 1
Unit Letter H	Section 9	Township 29N	Range 2W	County Rio Arriba	
Actual Footage Location of Well: 2250 feet from the North line and 510 feet from the East line					
Ground Level Elev. 7457	Producing Formation Wildcat/Pre-Cambrian Test	Pool Wildcat/Horizonta	Dedicated Acreage 160 Acres		

1. Outline the acreage dedicated to the subject well by colored pencil or hachure marks on the plat below.
2. If more than one lease is dedicated to the well, outline each and identify the ownership thereof (both as to working interest and royalty). (One Lease)
3. If more than one lease of different ownership is dedicated to the well, have the interests of all owners been consolidated by communitization, unitization, force-pooling, etc? (One Owner - Union Oil Co. of California)

☐ Yes ☐ No If answer is "yes," type of consolidation _____

If answer is "no," list the owners and tract descriptions which have actually been consolidated. (Use reverse side of this form if necessary.) _____

No allowable will be assigned to the well until all interests have been consolidated (by communitization, unitization, forced-pooling, or otherwise) or until a non-standard unit, eliminating such interests, has been approved by the Commission.

RECEIVED

SEP 5 1985

BUREAU OF LAND MANAGEMENT
FARMINGTON RESOURCE AREA

RECEIVED

OCT 02 1985

OIL CON. DIV.
DIST 93

W.I. Owner - Union Oil Co. of California
(Jicarilla Apache Tribe Contract No. 500)

— Lease Outline

Scale: 1"=1000'

CERTIFICATION

I hereby certify that the information contained herein is true and complete to the best of my knowledge and belief.

Name *Ed Ladd*
Position
District Drilling Supt.
Company
Union Oil Co. of California
Date
September 3, 1985

I hereby certify that the well location shown on this plat was plotted from field notes of actual surveys made by me or under my supervision, and that the same is true and correct to the best of my knowledge and belief.

Date Surveyed
August 19, 1985
Registered Professional Engineers
and Land Surveyor
Fred B. Kerr Jr.
Fred B. Kerr Jr.
Certificate No. **3750**

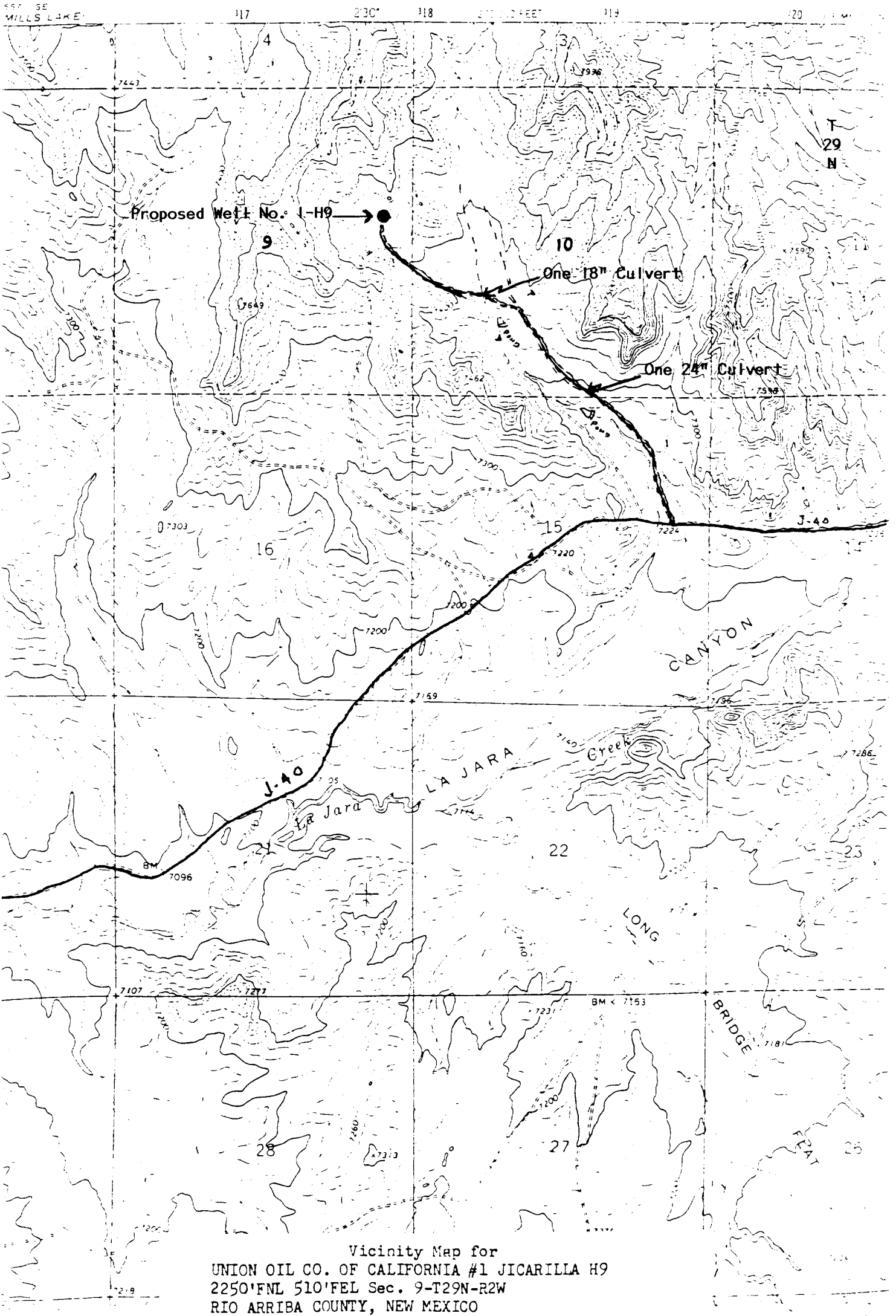
JICARILLA WELL NO. 1-H9

CEMENT

NEW MEX

75 MINUTE

R.2W.



Vicinity Map for
UNION OIL CO. OF CALIFORNIA #1 JICARILLA H9
2250'FNL 510'FEL Sec. 9-T29N-R2W
RIO ARRIBA COUNTY, NEW MEXICO