

STATE OF NEW MEXICO
ENERGY AND MINERALS DEPARTMENT

OIL CONSERVATION DIVISION

P. O. BOX 2088
SANTA FE, NEW MEXICO 87501

Form C-102
Revised 10-1-79

All distances must be from the outer boundaries of the Section.

Operator BAYLESS, Robert L.			Lease JICARILLA 452		Well No. 1Y
Unit Letter P	Section 6	Township 29 North	Range 3 West	County Rio Arriba	
Actual Footage Location of Well: (cardinal) 1030 feet from the South line and 935 feet from the East line					
Ground Level Elev. 6990 ft.	Producing Formation Fruitland	Pool Undes. Fruitland		Dedicated Acreage: 160 Acres	

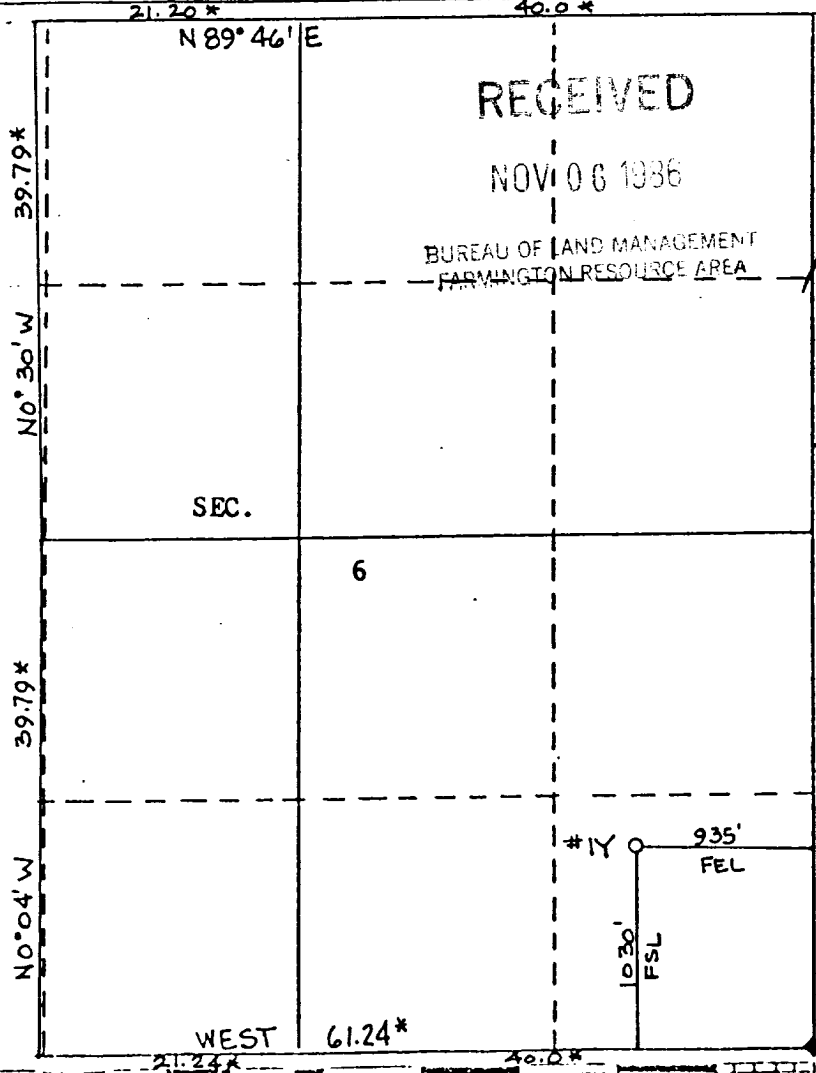
1. Outline the acreage dedicated to the subject well by colored pencil or hatchure marks on the plat below.
2. If more than one lease is dedicated to the well, outline each and identify the ownership thereof (both as to working interest and royalty).
3. If more than one lease of different ownership is dedicated to the well, have the interests of all owners been consolidated by communitization, unitization, force-pooling, etc?

☐ Yes ☐ No If answer is "yes," type of consolidation _____

If answer is "no," list the owners and tract descriptions which have actually been consolidated. (Use reverse side of this form if necessary.) _____

No allowable will be assigned to the well until all interests have been consolidated (by communitization, unitization, forced-pooling, or otherwise) or until a non-standard unit, eliminating such interests, has been approved by the Division.

* Record plat 1922 GLO ♦ Fd. GLO 1917 BC. w/ RH. Pile



CERTIFICATION

I hereby certify that the information contained herein is true and complete to the best of my knowledge and belief.

Name
Robert L. Bayless
Position
Operator
Company
Robert L. Bayless, Producer
Date
November 5, 1986

I hereby certify that the well location shown on this plat was plotted from field notes of actual surveys made by me or under my supervision, and that the same is true and correct to the best of my knowledge and belief.

Date Surveyed
June 17, 1986
Registered Professional Engineer and/or Land Surveyor
ROY A. RUSH
Certificate No. **8894**