



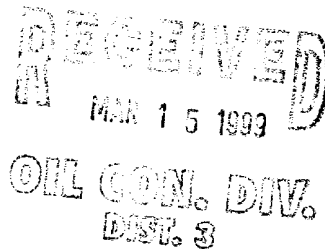
NEW MEXICO ENERGY, MINERALS  
& NATURAL RESOURCES DEPARTMENT

OIL CONSERVATION DIVISION  
2040 South Pacheco Street  
Santa Fe, New Mexico 87505  
(505) 827-7131

March 11, 1999

Mallon Oil Company  
P. O. Box 2797  
Durango, Colorado 81302  
Attention: Christy Serrano

Telefax No. (970) 382-7650



Administrative Order NSL-4229

Dear Ms. Serrano:

Reference is made to the following: (i) your application dated March 1, 1999; (ii) the New Mexico Oil Conservation Division's ("Division") initial response by e-mail on March 5, 1999 from Mr. Michael E. Stogner, Engineer in Santa Fe; (iii) your response by letter dated March 9, 1999 with the required data to complete this application; and (iv) the records of the Division: all concerning Mallon Oil Company's ("Mallon") request for a non-standard gas well location to be applicable to any and all formations and/or pools developed on 160-acre spacing from the surface to the base of the Pictured Cliffs formation, which presently includes but is not necessarily limited to the Undesignated East Blanco-Pictured Cliffs Pool.

Mallon is proposing to drill its Jicarilla 29-2-9 Well No. 1 (API No. 30-039-26094) 2097 feet from the South line and 615 feet from the West line (Unit L) of Section 9, Township 29 North, Range 2 West, NMPM, Rio Arriba County, New Mexico. The SW/4 of Section 9 is to be dedicated to this well to order to form a standard 160-acre gas spacing and proration unit for all gas producing zones within this vertical extent.

The application has been duly filed under the provisions of Division Rule 104.F.

By the authority granted me under the provisions of Division Rule 104.F(2), the above-described unorthodox gas well location is hereby approved.

Sincerely,

Lori Wrotenbery  
Director

LW/MES/kv

cc: New Mexico Oil Conservation Division - Aztec  
U. S. Bureau of Land Management - Albuquerque

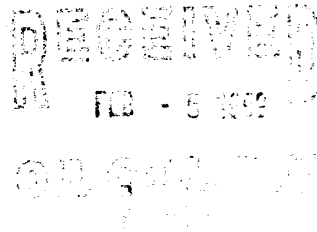
# Mallon Oil Company

Denver/Colorado ♦ Durango/Colorado ♦ Carlsbad/New Mexico

*a Mallon Resources Subsidiary*

February 1, 1999

Mr. Mike Stogner  
Oil Conservation Division  
2040 South Pacheco Street  
Santa Fe, New Mexico 87505



RE: Jicarilla 29-02-09 No. 1  
2097' FSL and 615' FWL  
(NW SW) Unit L  
Sec. 9, T29N-R02W

Dear Mr. Stogner:

Mallon Oil Company is requesting an unorthodox location for the Jicarilla Jicarilla 29-02-09 No. 1 (2097' FSL and 615' FWL (NW SW) Unit L) Sec. 9, T29N-R02W. We would like to apply for an NSL for the following formations:

1. East Blanco; Pictured Cliffs
2. Cabresto Canyon; Ojo Alamo Ext.
3. Cabresto Canyon; Nacimiento Ext.
4. Cabresto Canyon; San Jose Ext.

The well was placed here in compliance with the Jicarilla Apache Tribe and the Bureau of Land Management new well spacing. Mallon Oil Company is the only offset operator to the acreage shown.

Please contact me at (970) 382-9100, if any additional information is needed.

Sincerely

Christy Serrano  
Production Clerk

DISTRICT I  
P.O. Box 1980, Hobbs, N.M. 88241-1980

DISTRICT II  
P.O. Drawer DD, Artesia, N.M. 88211-0719

DISTRICT III  
1000 Rio Brazos Rd., Aztec, N.M. 87410

DISTRICT IV  
PO Box 2088, Santa Fe, NM 87504-2088

State of New Mexico  
Energy, Minerals & Natural Resources Department

OIL CONSERVATION DIVISION

P.O. Box 2088  
Santa Fe, NM 87504-2088

Form C-102<sup>7</sup>

Revised February 21, 1994

Instructions on back

Submit to Appropriate District Office

State Lease - 4 Copies

Fee Lease - 3 Copies

☐ AMENDED REPORT

WELL LOCATION AND ACREAGE DEDICATION PLAT

<sup>1</sup> API Number	<sup>2</sup> Pool Code 96822	<sup>3</sup> Pool Name Cabresto Canyon; Jose Ext.
<sup>4</sup> Property Code	<sup>5</sup> Property Name JICARILLA 29-2-9	<sup>6</sup> Well Number 1
<sup>7</sup> OGRIID No. 013925	<sup>8</sup> Operator Name MALLON OIL COMPANY	<sup>9</sup> Elevation 7308'

<sup>10</sup> Surface Location

UL or lot no. L	Section 9	Township 29-N	Range 2-W	Lot Idn	Feet from the 2097	North/South line SOUTH	Feet from the 615	East/West line WEST	County RIO ARRIBA
--------------------	--------------	------------------	--------------	---------	-----------------------	---------------------------	----------------------	------------------------	----------------------

<sup>11</sup> Bottom Hole Location If Different From Surface

UL or lot no.	Section	Township	Range	Lot Idn	Feet from the	North/South line	Feet from the	East/West line	County
<sup>12</sup> Dedicated Acres 160	<sup>13</sup> Joint or Infill	<sup>14</sup> Consolidation Code	<sup>15</sup> Order No.						

NO ALLOWABLE WILL BE ASSIGNED TO THIS COMPLETION UNTIL ALL INTERESTS HAVE BEEN CONSOLIDATED  
OR A NON-STANDARD UNIT HAS BEEN APPROVED BY THE DIVISION

<sup>16</sup> CALC. CORNER N 0-33-58 E 5270.0' 615' 2097 SET P & C L.S. 8894	<div>RECEIVED FEB 12 1999</div>	<sup>17</sup> OPERATOR CERTIFICATION I hereby certify that the information contained herein is true and complete to the best of my knowledge and belief.  <u>Christy Serrano</u> Signature Christy Serrano Printed Name Production Secretary Title February 1, 1999 Date
		<sup>18</sup> SURVEYOR CERTIFICATION I hereby certify that the well location shown on this plat was plotted from field notes of actual surveys made by me or under my supervision, and that the same are true and correct to the best of my belief.  11 Date of Survey Signature and Seal of Professional Surveyor 8894 Certificate Number

DISTRICT I  
P.O. Box 1980, Hobbs, N.M. 88241-1980

DISTRICT II  
P.O. Drawer DD, Artesia, N.M. 88211-0719

DISTRICT III  
1000 Rio Brazos Rd., Artesia, N.M. 87410

DISTRICT IV  
PO Box 2088, Santa Fe, NM 87504-2088

State of New Mexico  
Energy, Minerals & Natural Resources Department

OIL CONSERVATION DIVISION

P.O. Box 2088  
Santa Fe, NM 87504-2088

Form C-102

Revised February 21, 1994

Instructions on back

Submit to Appropriate District Office

State Lease - 4 Copies

Fee Lease - 3 Copies

☐ AMENDED REPORT

WELL LOCATION AND ACREAGE DEDICATION PLAT

<sup>1</sup> API Number	<sup>2</sup> Pool Code 96538	<sup>3</sup> Pool Name Cabresto Canyon; Ojo Alamo Ext.
<sup>4</sup> Property Code	<sup>5</sup> Property Name JICARILLA 29-2-9	<sup>6</sup> Well Number 1
<sup>7</sup> GRID No. 013925	<sup>8</sup> Operator Name MALLON OIL COMPANY	<sup>9</sup> Elevation 7308'

<sup>10</sup> Surface Location

UL or lot no. L	Section 9	Township 29-N	Range 2-W	Lot Idn	Feet from the 2097	North/South line SOUTH	Feet from the 615	East/West line WEST	County RIO ARRIBA
--------------------	--------------	------------------	--------------	---------	-----------------------	---------------------------	----------------------	------------------------	----------------------

<sup>11</sup> Bottom Hole Location If Different From Surface

UL or lot no.	Section	Township	Range	Lot Idn	Feet from the	North/South line	Feet from the	East/West line	County
---------------	---------	----------	-------	---------	---------------	------------------	---------------	----------------	--------

<sup>12</sup> Dedicated Acres 160	<sup>13</sup> Joint or Infill	<sup>14</sup> Consolidation Code	<sup>15</sup> Order No.
--------------------------------------	-------------------------------	----------------------------------	-------------------------

NO ALLOWABLE WILL BE ASSIGNED TO THIS COMPLETION UNTIL ALL INTERESTS HAVE BEEN CONSOLIDATED  
OR A NON-STANDARD UNIT HAS BEEN APPROVED BY THE DIVISION

<sup>16</sup> CALC. CORNER N 0-30-59 E 5270.0' 615' 2097' SET P & C L.S. 8894				<sup>17</sup> OPERATOR CERTIFICATION I hereby certify that the information contained herein is true and complete to the best of my knowledge and belief.  <u>Christy Serrano</u> Signature <u>Christy Serrano</u> Printed Name <u>Production Secretary</u> Title <u>February 1, 1999</u> Date
				<sup>18</sup> SURVEYOR CERTIFICATION I hereby certify that the well location shown on this plat was plotted from field notes of actual surveys made by me or under my supervision, and that the same is true and correct to the best of my belief.  11 Date of Survey Signature and Seal of Professional Surveyor <u>8894</u> Certificate Number

DISTRICT I  
P.O. Box 1980, Hobbs, N.M. 88241-1980

DISTRICT II  
P.O. Drawer DD, Artesia, N.M. 88211-0719

DISTRICT III  
1000 Rio Brazos Rd., Aztec, N.M. 87410

DISTRICT IV  
PO Box 2088, Santa Fe, NM 87504-2088

State of New Mexico  
Energy, Minerals & Natural Resources Department

OIL CONSERVATION DIVISION

P.O. Box 2088  
Santa Fe, NM 87504-2088

Form C-102<sup>7</sup>

Revised February 21, 1994

Instructions on back

Submit to Appropriate District Office

State Lease - 4 Copies

Fee Lease - 3 Copies

☐ AMENDED REPORT

WELL LOCATION AND ACREAGE DEDICATION PLAT

<sup>1</sup> API Number	<sup>2</sup> Pool Code 96821	<sup>3</sup> Pool Name Cabresto Canyon; Nacimiento Ext.
<sup>4</sup> Property Code	<sup>5</sup> Property Name JICARILLA 29-2-9	<sup>6</sup> Well Number 1
<sup>7</sup> GRID No. 013925	<sup>8</sup> Operator Name MALLON OIL COMPANY	<sup>9</sup> Elevation 7308'

<sup>10</sup> Surface Location

UL or lot no. L	Section 9	Township 29-N	Range 2-W	Lot Idn	Feet from the 2097	North/South line SOUTH	Feet from the 615	East/West line WEST	County RIO ARRIBA
--------------------	--------------	------------------	--------------	---------	-----------------------	---------------------------	----------------------	------------------------	----------------------

<sup>11</sup> Bottom Hole Location If Different From Surface

UL or lot no.	Section	Township	Range	Lot Idn	Feet from the	North/South line	Feet from the	East/West line	County
---------------	---------	----------	-------	---------	---------------	------------------	---------------	----------------	--------

<sup>12</sup> Dedicated Acres 160	<sup>13</sup> Joint or Infill	<sup>14</sup> Consolidation Code	<sup>15</sup> Order No.
--------------------------------------	-------------------------------	----------------------------------	-------------------------

NO ALLOWABLE WILL BE ASSIGNED TO THIS COMPLETION UNTIL ALL INTERESTS HAVE BEEN CONSOLIDATED  
OR A NON-STANDARD UNIT HAS BEEN APPROVED BY THE DIVISION

16 CALC. CORNER				17 OPERATOR CERTIFICATION I hereby certify that the information contained herein is true and complete to the best of my knowledge and belief.  Christy Serrano Signature Christy Serrano Printed Name Production Secretary Title February 1, 1999 Date
				18 SURVEYOR CERTIFICATION I hereby certify that the well location shown on this plat was plotted from field notes of actual surveys made by me or under my supervision, and that the same is true and correct to the best of my belief.  11 Date of Survey Signature and Seal of Professional Surveyor 8894 Certificate Number
615'				
2097'				
SET P & C L.S. 8894	S 89-38-24 E	5347.6'	FD. MARKED STONE	

DISTRICT I  
P.O. Box 1980, Hobbs, N.M. 88241-1980

DISTRICT II  
P.O. Drawer DD, Artesia, N.M. 88211-0719

DISTRICT III  
1000 Rio Brasos Rd., Artesia, N.M. 87410

DISTRICT IV  
PO Box 2088, Santa Fe, NM 87504-2088

State of New Mexico  
Energy, Minerals & Natural Resources Department

OIL CONSERVATION DIVISION

P.O. Box 2088  
Santa Fe, NM 87504-2088

Form C-102

Revised February 21, 1994

Instructions on back

Submit to Appropriate District Office

State Lease - 4 Copies

Fee Lease - 3 Copies

☐ AMENDED REPORT

WELL LOCATION AND ACREAGE DEDICATION PLAT

<sup>1</sup> API Number	<sup>2</sup> Pool Code 72400	<sup>3</sup> Pool Name East Blanco; Pictured Cliffs
<sup>4</sup> Property Code	<sup>5</sup> Property Name JICARILLA 29-2-9	<sup>6</sup> Well Number 1
<sup>7</sup> OGRID No. 013925	<sup>8</sup> Operator Name MALLON OIL COMPANY	<sup>9</sup> Elevation 7308'

<sup>10</sup> Surface Location

UL or lot no. L	Section 9	Township 29-N	Range 2-W	Lot Idn	Feet from the 2097	North/South line SOUTH	Feet from the 615	East/West line WEST	County RIO ARRIBA
--------------------	--------------	------------------	--------------	---------	-----------------------	---------------------------	----------------------	------------------------	----------------------

<sup>11</sup> Bottom Hole Location If Different From Surface

UL or lot no.	Section	Township	Range	Lot Idn	Feet from the	North/South line	Feet from the	East/West line	County
---------------	---------	----------	-------	---------	---------------	------------------	---------------	----------------	--------

<sup>12</sup> Dedicated Acres 160	<sup>13</sup> Joint or Infill	<sup>14</sup> Consolidation Code	<sup>15</sup> Order No.
--------------------------------------	-------------------------------	----------------------------------	-------------------------

NO ALLOWABLE WILL BE ASSIGNED TO THIS COMPLETION UNTIL ALL INTERESTS HAVE BEEN CONSOLIDATED  
OR A NON-STANDARD UNIT HAS BEEN APPROVED BY THE DIVISION

<sup>16</sup> CALC. CORNER					<sup>17</sup> OPERATOR CERTIFICATION I hereby certify that the information contained herein is true and complete to the best of my knowledge and belief.  <u>Christy Serrano</u> Signature Christy Serrano Printed Name Production Secretary Title February 1, 1999 Date
N 0-34-59 E 5270.0'					<sup>18</sup> SURVEYOR CERTIFICATION I hereby certify that the well location shown on this plat was plotted from field notes of actual surveys made by me or under my supervision, and that the same is true and correct to the best of my belief.  11 Date of Survey Signature and Seal of Professional Surveyor 8894 8894 Certificate Number
615'					
2097'					
SET P & C L.S. 8894	S 89-38-24 E	5347.6'	FD. MARKED STONE		

