

NEW MEXICO OIL CONSERVATION COMMISSION
WELL LOCATION AND ACREAGE DEDICATION PLAT

FORM C-128
Revised 5/1/57

SEE INSTRUCTIONS FOR COMPLETING THIS FORM ON THE REVERSE SIDE

SECTION A

Operator BENSON-MONTIN-GREER DRILLING CORP.		Lease JONES		Well No. 3
Unit Letter F	Section 17	Township 28N	Range 13W	County San Juan
Actual Footage Location of Well: 1980 feet from the north line and 1980 feet from the west line				
Ground Level Elev. 6010	Producing Formation Gallup	Pool Cha Cha-Gallup	Dedicated Acreage: 80 Acres	

1. Is the Operator the only owner in the dedicated acreage outlined on the plat below? YES ☒ NO ____ ("Owner" means the person who has the right to drill into and to produce from any pool and to appropriate the production either for himself or for himself and another. (65-3-29 (e) NMSA 1935 Comp.)
2. If the answer to question one is "no," have the interests of all the owners been consolidated by communitization, agreement or otherwise? YES ____ NO ____ . If answer is "yes," Type of Consolidation ____
3. If the answer to question two is "no," list all the owners and their respective interests below:

Owner	Land Description

OCT 21 1960
OIL CON. COM.
DIST. 3

CERTIFICATION

I hereby certify that the information in SECTION A above is true and complete to the best of my knowledge and belief.

Name <i>S. J. Stanley</i>
Position Engineer
Company Benson-Montin-Greer
Date Drilling Corp.
October 18, 1960

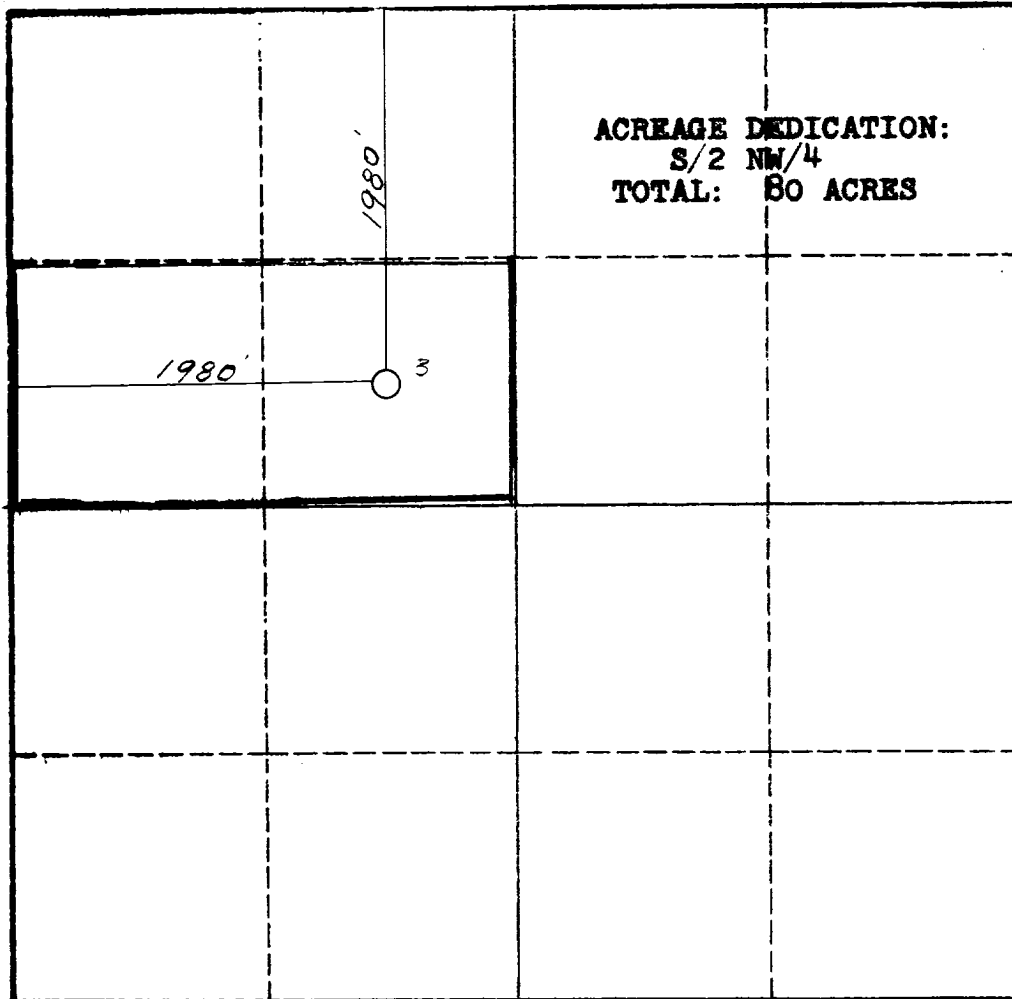
I hereby certify that the well location shown on the plat in SECTION B was plotted from field notes of actual surveys made by me or under my supervision, and that the same is true and correct to the best of my knowledge and belief.

Date Surveyed March 19, 1960
Registered Professional Engineer and/or Land Surveyor

Certificate No. **1540**

SECTION B

ACREAGE DEDICATION:
S/2 NW/4
TOTAL: 80 ACRES



0 330 660 990 1320 1650 1980 2310 2640 2000 1500 1000 500 0

INSTRUCTIONS FOR COMPLETION OF FORM C-128

1. Operator shall furnish and certify to the information called for in Section A.
2. Operator shall outline the dedicated acreage for *both* oil and gas wells on the plat in Section B.
3. A registered professional engineer or land surveyor registered in the State of New Mexico or approved by the Commission shall show on the plat the location of the well and certify this information in the space provided.
4. All distances shown on the plat must be from the outer boundaries of the Section.
5. If additional space is needed for listing owners and their respective interests as required in question 3 of Section A, please use space below.

STATE OF NEW MEXICO		
OIL CONSERVATION COMMISSION		
AZTEC DISTRICT OFFICE		
NUMBER OF COPIES RECEIVED		
DIST. 15		
SANTA FE		
FILE		
U.S.G.S.		
LAND OFFICE		
TRANSPORT & OIL		
PROBATION & GAS		
OPERATION		