

UNITED STATES
DEPARTMENT OF THE INTERIOR
GEOLOGICAL SURVEY

APPLICATION FOR PERMIT TO DRILL, DEEPEN, OR PLUG BACK

1a. TYPE OF WORK
 DRILL DEEPEN PLUG BACK

b. TYPE OF WELL
 OIL WELL GAS WELL OTHER
 SINGLE ZONE MULTIPLE ZONE

2. NAME OF OPERATOR
 MIAMI OIL PRODUCERS, INC.

3. ADDRESS OF OPERATOR
 P. O. Drawer 2040, Abilene, Texas

4. LOCATION OF WELL (Report location clearly and in accordance with any State requirements.)*
 At surface 532' FNL - 660' FWL
 At proposed prod. zone 660' from NW corner

14. DISTANCE IN MILES AND DIRECTION FROM NEAREST TOWN OR POST OFFICE*
 14 miles SW of Farmington, New Mexico

15. DISTANCE FROM PROPOSED* LOCATION TO NEAREST PROPERTY OR LEASE LINE, FT. (Also to nearest drlg. line, if any) 532

16. NO. OF ACRES IN LEASE 3138

17. NO. OF ACRES ASSIGNED TO THIS WELL 40

18. DISTANCE FROM PROPOSED* LOCATION TO NEAREST WELL, DRILLING COMPLETED OR APPLIED FOR, ON THIS LEASE, FT. -0-

19. PROPOSED DEPTH 5300'

20. ROTARY OR CABLE TOOLS Rotary

21. ELEVATIONS (Show whether DF, RT, GR, etc.)
 5439.5'

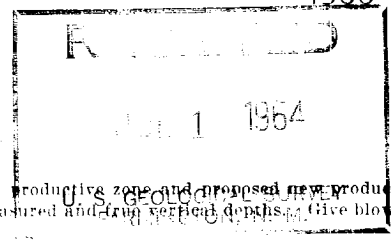
22. APPROX. DATE WORK WILL START*
 July 15, 1964

23. PROPOSED CASING AND CEMENTING PROGRAM

SIZE OF HOLE	SIZE OF CASING	WEIGHT PER FOOT	SETTING DEPTH	QUANTITY OF CEMENT
12-1/4"	8-5/8	24#	200'	100 sx
6 3/4"	4-1/2	9.5#	4590'	300 sx

We will drill 12 1/4" hole and set 200' of surface casing with 100 sx cement, reduce hole size to 6 3/4" to TD of approximately 4590'. Adequate mud will be used at all times. We will drill stem test if any oil show is encountered, and run electrical surveys as indicated. If productive, 4 1/2" 9.5# casing will be set with adequate cement. If non-productive, we will plug and abandon in accordance with all State and Federal regulations. List of expected formation tops:

Pictured Cliffs	368	Top Gallup Sand	4527
Lewis	533	Sanastee	4588
Mesaverde	1288		
Point Lookout	2983		
Mancos	3197		
Top Gallup	4193		



IN ABOVE SPACE DESCRIBE PROPOSED PROGRAM: If proposal is to deepen or plug back, give data on present productive zone and proposed new productive zone. If proposal is to drill or deepen directionally, give pertinent data on subsurface locations and measured and true vertical depths. Give blowout preventer program, if any.

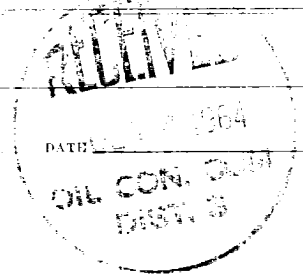
24. SIGNED *J. J. ...* TITLE Vice President DATE July 8, 1964

(This space for Federal or State office use)

PERMIT NO. APPROVAL DATE

APPROVED BY *Ju* TITLE DATE

CONDITIONS OF APPROVAL, IF ANY:



NEW MEXICO OIL CONSERVATION COMMISSION

Well Location and Acreage Information

July 8, 1964

Section A.

Operator MIAMI OIL PRODUCERS, INCORPORATED Lease NAVAJO 2013 - A
 Well No. 1 Unit Letter I Section 11 Township 28 NORTH Range 15 WEST NMPM
 Located 532 Feet From the NORTH Line, 660 Feet From the WEST Line
 County SAN JUAN G. L. Elevation 5439.5' Dedicated Acreage 40 Acres
 Name of Producing Formation Gallup Wildcat

1. Is the Operator the only owner in the dedicated acreage outlined on the plat below?
 Yes No
2. If the answer to question one is "no", have the interests of all the owners been consolidated by communitization agreement or otherwise? Yes No If answer is "yes", Type of Consolidation.
2. If the answer to question two is "no", list all the owners and their respective interests below:
 Owner _____ Land Ownership _____

Section B.

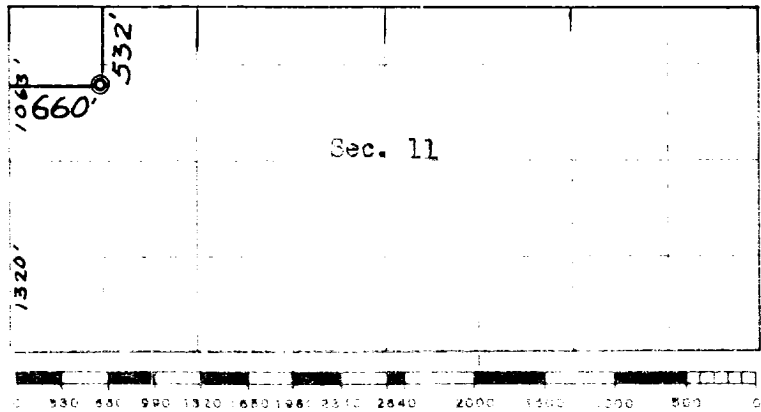
Note: All distances must be from quarter corners if section.

This is to certify that the information in Section A above is true and complete to the best of my knowledge and belief.

MIAMI OIL PRODUCERS, INC.

Operator
Sam J. Gray
 Representative
 Drawer 2040

Address:
Abilene, Texas



Scale 4 inches = 1 mile



This is to certify that the above plat was prepared from field notes of actual surveys made by me or under my supervision and that the same are true and correct to the best of my knowledge and belief.

Date Surveyed: June 23, 1964

James P. Leese
 Registered Professional Engineer and/or Land Surveyor
 James P. Leese, N. Mex. Reg. No. 1463