

**NEW MEXICO OIL CONSERVATION COMMISSION  
WELL LOCATION AND ACERAGE DEDICATION PLAT**

All distances must be from the outer boundaries of the Section

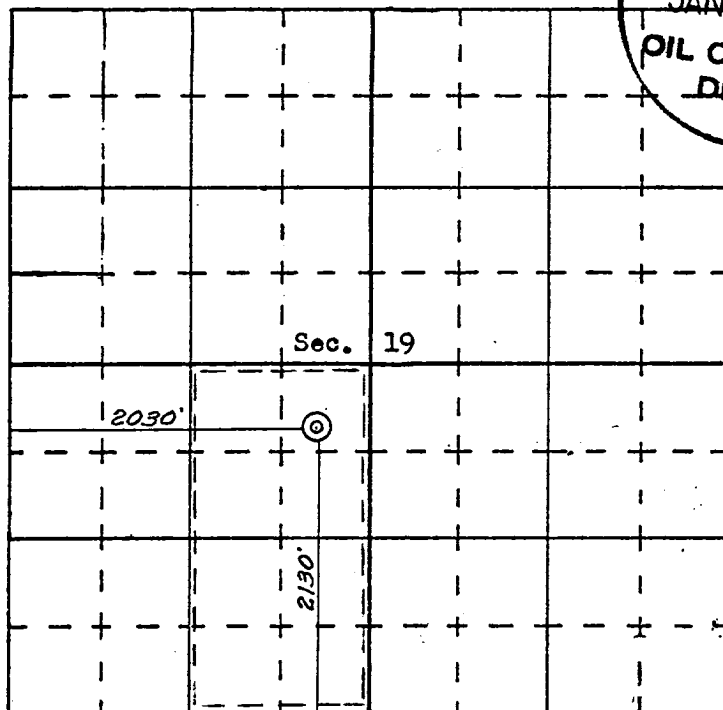
Operator <b>PAN AMERICAN PETROLEUM CORPORATION</b>			Lease <b>GALLEGOS CANYON UNIT</b>		Well No. <b>257</b>
Unit Letter <b>K</b>	Section <b>19</b>	Township <b>28 NORTH</b>	Range <b>11 WEST</b>	County <b>SAN JUAN</b>	
Actual Footage Location of Well: <b>2130</b> feet from the <b>SOUTH</b> line and <b>2030</b> feet from the <b>WEST</b> line					
Ground Level Elev. <b>REPORT LATER</b>	Formation <b>GALLUP</b>	Pool <b>PINON GALLUP</b>		Dedicated Acreage: <b>80</b> Acres	

1. Outline the acreage dedicated to the subject well by colored pencil or hachure marks on the plat below.
2. If more than one lease is dedicated to the well, outline each and identify the ownership thereof (both as to working interest and royalty),
3. If more than one lease of different ownership is dedicated to the well, have the interests of all owners been consolidated by communitization, unitization, force-pooling, etc?

(X) Yes ( ) No If answer is "yes," type of consolidation Unitization

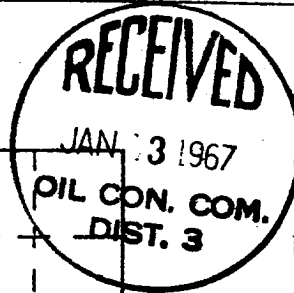
If answer is "no," list the owners and tract descriptions which have actually consolidated. (Use reverse side of this form if necessary.)

No allowable will be assigned to the well until all interests have been consolidated (by communitization, unitization, forced-pooling, or otherwise) or until a non standard unit, eliminating such interests, has been approved by the Commission.



SCALE—4 INCHES EQUALS 1 MILE

SAN JUAN ENGINEERING COMPANY, FARMINGTON, N. M.



**CERTIFICATION**

I hereby certify that the information contained herein is true and complete to the best of my knowledge and belief.

Name G. W. Eaton, Jr.  
Position Area Engineer  
Company PAN AMERICAN PETROLEUM CORPORATION  
Date January 18, 1967

I hereby certify that the well location shown on this plat was plotted from field notes of actual surveys made by me or under my supervision, and that the same is true and correct to the best of my knowledge and belief.

Date Surveyed January 17, 1967  
James P. Leese  
Registered Professional Engineer  
and/or Land Surveyor  
**JAMES P. LEESE**  
Certificate No. 2463