

UNITED STATES
DEPARTMENT OF THE INTERIOR
GEOLOGICAL SURVEY

APPLICATION FOR PERMIT TO DRILL, DEEPEN, OR PLUG BACK

1a. TYPE OF WORK
DRILL ☒ DEEPEN ☐ PLUG BACK ☐

b. TYPE OF WELL
OIL WELL ☐ GAS WELL ☒ OTHER ☐
SINGLE ZONE ☐ MULTIPLE ZONE ☐

2. NAME OF OPERATOR

Eljohn Petroleum Corp.

3. ADDRESS OF OPERATOR

216 Tower Bldg., Denver, Colorado

4. LOCATION OF WELL (Report location clearly and in accordance with any State requirements.)*
At surface

900' fnl 675' fel
At proposed prod. zone

As above

14. DISTANCE IN MILES AND DIRECTION FROM NEAREST TOWN OR POST OFFICE*

Two miles south Farmington, New Mexico

15. DISTANCE FROM PROPOSED*

LOCATION TO NEAREST
PROPERTY OR LEASE LINE, FT.
(Also to nearest drlg. unit line, if any)

16. NO. OF ACRES IN LEASE

17. NO. OF ACRES ASSIGNED
TO THIS WELL

344.42

18. DISTANCE FROM PROPOSED LOCATION*
TO NEAREST WELL, DRILLING, COMPLETED,
OR APPLIED FOR, ON THIS LEASE, FT.

19. PROPOSED DEPTH

6450'

20. ROTARY OR CABLE TOOLS

Rotary

21. ELEVATIONS (Show whether DF, RT, GR, etc.)

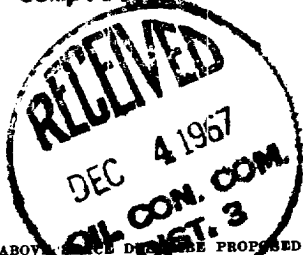
22. APPROX. DATE WORK WILL START*

12-1-67

23. PROPOSED CASING AND CEMENTING PROGRAM

SIZE OF HOLE	SIZE OF CASING	WEIGHT PER FOOT	SETTING DEPTH	QUANTITY OF CEMENT
12 1/4"	8 5/8"	24#	200'	150 cu. ft.
7 7/8"	4 1/2"	10.5#	6450'	1100 cu. ft.

Plan to drill a 12 1/4" hole to 200' and run 8 5/8" surface csg. cemented with sufficient cement to circulate. A 7 7/8" hole will then be drilled to a total depth of approximately 6450' to test the Dakota Formation. 4 1/2" csg. will then be run to total depth and cemented in two stages, the first stage to cement above the Gallup Formation and the second stage to cover the Mesaverde, & Picture Cliffs. The Dakota Formation will then be selectively perforated and SWF, tak the run and the well completed.



Subject to
communitizing E 1/2 E 1/2 sec 9

RECEIVED

DEC 1 1967

U. S. GEOLOGICAL SURVEY
FARMINGTON, N. M.

IN ABOVE CASE DESCRIBE PROPOSED PROGRAM: If proposal is to deepen or plug back, give data on present productive zone and proposed new productive zone. If proposal is to drill or deepen directionally, give pertinent data on subsurface locations and measured and true vertical depths. Give blowout preventer program, if any.

24.

SIGNED Original signed by T. A. Dugan

TITLE Engineer

DATE 11/22/67

(This space for Federal or State office use)

PERMIT NO.

APPROVAL DATE

APPROVED BY

TITLE

DATE

CONDITIONS OF APPROVAL, IF ANY:

NSU approved
Order R 1814

*See Instructions On Reverse Side

Approved subject to State approval of
nonstandard proration unit.

Instructions

General: This form is designed for submitting proposals to perform certain well operations, as indicated, on all types of lands and leases for appropriate action by either a Federal or a State agency, or both, pursuant to applicable Federal and/or State laws and regulations. Any necessary special instructions concerning the use of this form and the number of copies to be submitted, particularly with regard to local, area, or regional procedures and practices, either are shown below or will be issued by, or may be obtained from, the local Federal and/or State office.

Item 1: If the proposal is to redrill to the same reservoir at a different subsurface location or to a new reservoir, use this form with appropriate notations. Consult applicable State or Federal regulations concerning subsequent work proposals or reports on the well.

Item 4: If there are no applicable State requirements, locations on Federal or Indian land should be described in accordance with Federal requirements. Consult local State or Federal office for specific instructions.

Item 14: Needed only when location of well cannot readily be found by road from the land or lease description. A plat, or plats, separate or on this reverse side, showing the roads to, and the surveyed location of, the well, and any other required information, should be furnished when required by Federal or State agency offices.

Items 15 and 18: If well is to be, or has been directionally drilled, give distances for subsurface location of hole in any present or objective production zone.

Item 22: Consult applicable Federal or State regulations, or appropriate officials, concerning approval of the proposal before operations are started.



**NEW MEXICO OIL CONSERVATION COMMISSION
WELL LOCATION AND ACREAGE DEDICATION PLAT**

Form C-102
Supersedes C-128
Effective 1-1-65

All distances must be from the outer boundaries of the Section.

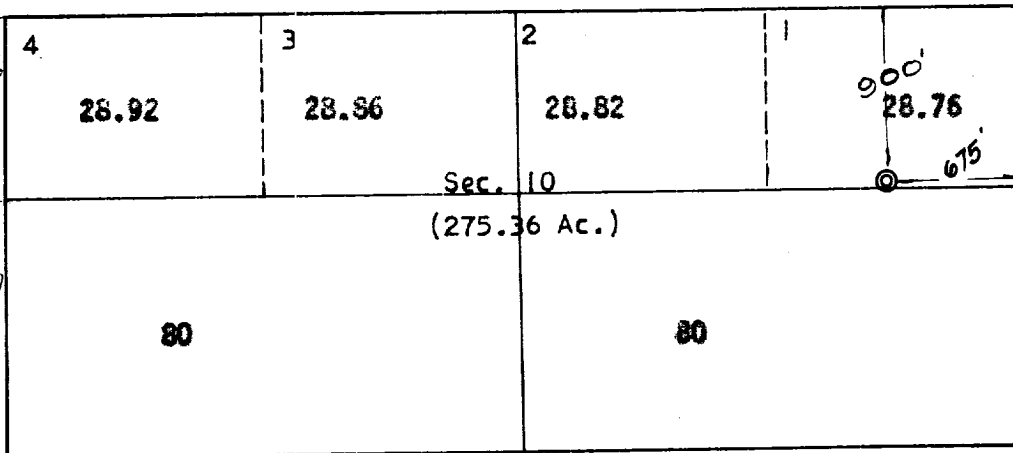
Operator El John Pet. Corp.			Lease Baymore Bay Mare		Well No. 1
Unit Letter I	Section 10	Township 28 North	Range 13 West	County San Juan	
Actual Footage Location of Well: <div style="display: flex; justify-content: space-between;"> 900 feet from the North line and 675 feet from the East line </div>					
Ground Level Elev:	Producing Formation Dakota	Pool Basin	Dedicated Acreage: 344.42 Acres		

1. Outline the acreage dedicated to the subject well by colored pencil or hatchure marks on the plat below.
2. If more than one lease is dedicated to the well, outline each and identify the ownership thereof (both as to working interest and royalty).
3. If more than one lease of different ownership is dedicated to the well, have the interests of all owners been consolidated by communitization, unitization, force-pooling, etc?

☐ Yes ☐ No If answer is "yes," type of consolidation _____

If answer is "no," list the owners and tract descriptions which have actually been consolidated. (Use reverse side of this form if necessary.) _____

No allowable will be assigned to the well until all interests have been consolidated (by communitization, unitization, forced-pooling, or otherwise) or until a non-standard unit, eliminating such interests, has been approved by the Commission.



Fractional Section
Scale, 1" = 1000'

E/2 E/2 Sec. 9 included in proration unit.

150 approved
Order R-1814



CERTIFICATION

I hereby certify that the information contained herein is true and complete to the best of my knowledge and belief.

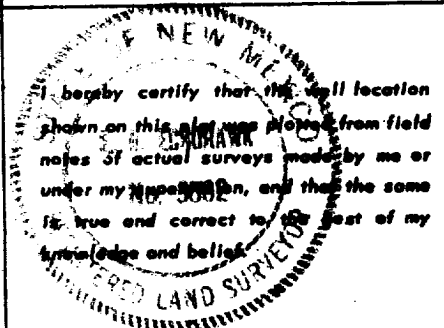
Original signed by T. A. Dugan

Name
Thomas A. Dugan

Position
Engineer

Company
El John Pet. Corp.

Date
11/3/67



Date Surveyed
September 6, 1967

Registered Professional Engineer
and/or Land Surveyor

E. H. Cochran
Certificate No.

