

UNITED STATES  
DEPARTMENT OF THE INTERIOR  
GEOLOGICAL SURVEY

## APPLICATION FOR PERMIT TO DRILL, DEEPEN, OR PLUG BACK

## 1a. TYPE OF WORK

DRILL ☒DEEPEN ☐PLUG BACK ☐

## b. TYPE OF WELL

OIL  
WELL ☐GAS  
WELL ☒

OTHER

SINGLE  
ZONE ☒MULTIPLE  
ZONE ☐

## 2. NAME OF OPERATOR

R &amp; G Drilling Company

## 3. ADDRESS OF OPERATOR

c/o Walsh Engineering &amp; Production Corp.

P.O. Box 254 Farmington, New Mexico 87401

## 4. LOCATION OF WELL (Report location clearly and in accordance with any State requirements.)\*

At surface

1850' FSL, 1755' FWL

At proposed prod. zone

Same

## 14. DISTANCE IN MILES AND DIRECTION FROM NEAREST TOWN OR POST OFFICE\*

## 15. DISTANCE FROM PROPOSED\*

LOCATION TO NEAREST  
PROPERTY OR LEASE LINE, FT.  
(Also to nearest drilg. unit line, if any)

1755'

## 18. DISTANCE FROM PROPOSED LOCATION\*

TO NEAREST WELL, DRILLING, COMPLETED,  
OR APPLIED FOR, ON THIS LEASE, FT.

—

## 16. NO. OF ACRES IN LEASE

—

## 19. PROPOSED DEPTH

1722'

17. NO. OF ACRES ASSIGNED  
TO THIS WELL

160

## 20. ROTARY OR CABLE TOOLS

Rotary

## 21. ELEVATIONS (Show whether DF, RT, GR, etc.)

5794' GR

## 22. APPROX. DATE WORK WILL START\*

8-23-78

## 23.

## PROPOSED CASING AND CEMENTING PROGRAM

SIZE OF HOLE	SIZE OF CASING	WEIGHT PER FOOT	SETTING DEPTH	QUANTITY OF CEMENT
12- $\frac{1}{4}$	8-5/8	24.0	100	125 sxs
7-7/8 or 6-3/4	4-1/2	10.50	1722	to be determined

It is proposed to drill this well with rotary tools, and using drilling mud as a circulating medium, through the Fruitland Formation. Possible productive intervals in the Fruitland Formations will be completed. Productive casing will be cemented in such a manner to protect all possible productive intervals and water sand.

## Estimated Formation Tops

Ojo Alamo-510'

Kirtland-620'

Fruitland-1380'

The SW/4 of Section 28 will be dedicated to this well.  
The natural gas from this well is committed.

IN ABOVE SPACE DESCRIBE PROPOSED PROGRAM: If proposal is to deepen or plug back, give data on present productive zone and proposed new productive zone. If proposal is to drill or deepen directionally, give pertinent data on subsurface locations and measured and true vertical depths. Give blowout preventer program, if any.

24. For: R &amp; G Drilling Co.

President, Walsh Engineering

SIGNED

Ewell N. Walsh, P.E.

TITLE &amp; Production Corp.

DATE 8-10-78

(This space for Federal or State office use)

PERMIT NO. \_\_\_\_\_

APPROVAL DATE \_\_\_\_\_

APPROVED BY \_\_\_\_\_

TITLE \_\_\_\_\_

DATE \_\_\_\_\_

CONDITIONS OF APPROVAL, IF ANY:

ok Frank

\*See Instructions On Reverse Side

NEW MEXICO OIL CONVEYANCE COMMISSION  
WELL LOCATION AND ACRES DEDICATION PLAT

All distances must be from the corner of the section.

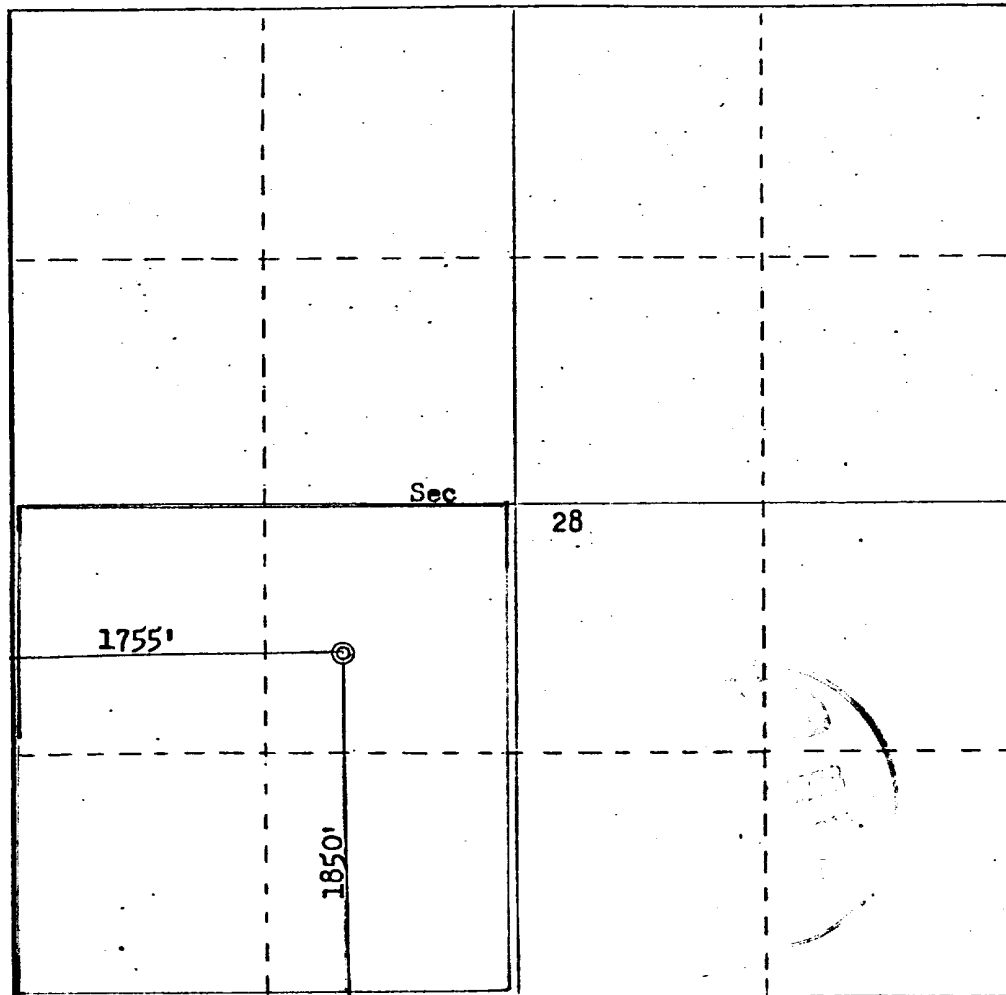
R & G DRILLING COMPANY		KRAUSE		70	
Unit Letter <b>K</b>	Section <b>28</b>	Township <b>28N</b>	Range <b>11W</b>	County <b>San Juan</b>	
Actual Footage Location of Wells: <b>1850</b> feet from the <b>South</b> line and <b>1755</b> feet from the <b>West</b> line					
Ground Level Elev. <b>5794</b>	Producing Formation <b>Fruitland</b>	Pool <b>Kutz Fruitland ext</b>	Dedicated Acres <b>160</b> Acres		

1. Outline the acreage dedicated to the subject well by colored pencil or hatchure marks on the plat below.
2. If more than one lease is dedicated to the well, outline each and identify the ownership thereof (both as to working interest and royalty).
3. If more than one lease of different ownership is dedicated to the well, have the interests of all owners been consolidated by communitization, unitization, force-pooling, etc?

☐ Yes ☐ No If answer is "yes," type of consolidation \_\_\_\_\_

If answer is "no," list the owners and tract descriptions which have actually been consolidated. (Use reverse side of this form if necessary.) \_\_\_\_\_

No allowable will be assigned to the well until all interests have been consolidated (by communitization, unitization, forced-pooling, or otherwise) or until a non-standard unit, eliminating such interests, has been approved by the Commission.



CERTIFICATION

I hereby certify that the information contained herein is true and complete to the best of my knowledge and belief.

For: R & G Drilling Co.

Name **Ewell N. Walsh, P.E.**  
President, Walsh

Position  
**Walsh Engineering & Production Corp.**

Date  
**August 10, 1978**

I hereby certify that the well location shown on this plat was plotted from field notes of actual surveys made by me or under my supervision, and that the same is true and correct to the best of my knowledge and belief.

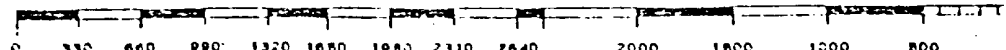
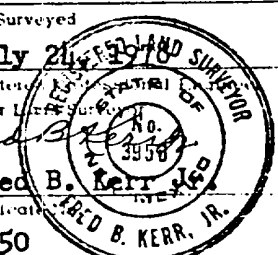
Date Surveyed

**July 24, 1978**

Registered and or Licensed Surveyor

**Fred B. Kerr, Jr.**

Certificate No. **3950**



DEVELOPMENT PLAN

R & G Drilling Company  
Krause No. 70  
1850' FSL, 1755' FWL, Section 28-T28N-R11W  
San Juan County, New Mexico

1. Existing roads shown on attached plat.
2. Planned access from existing road is approximately 100' to new location.
3. Location -  
    See Above
4. One additional well is planned on this lease at this time.
5. Production equipment or storage facilities proposed for the well will be installed on location.
6. Water to be obtained from the San Juan River in the NW/4 Section 27-T29N-R11W
7. Waste materials will be buried on location or in reserve pit.
8. No permanent camp is planned. A trailer house will be used on location during drilling process.
9. No airstrip is proposed.
10. See attached plat for layout.
11. Pits will be filled, location cleaned up, and area not in use for producing well will be reseeded using broadcast method of planting.

DEVELOPMENT PLAN

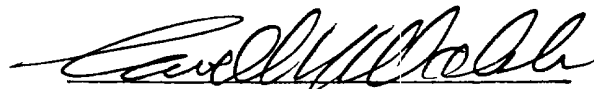
12. Lessee's or operator's representative.

Ewell N. Walsh: 327-4892; Radio Dispatch 325-1873, Car 620  
Address: P.O. Box 254, Farmington, New Mexico 87401

13; CERTIFICATION:

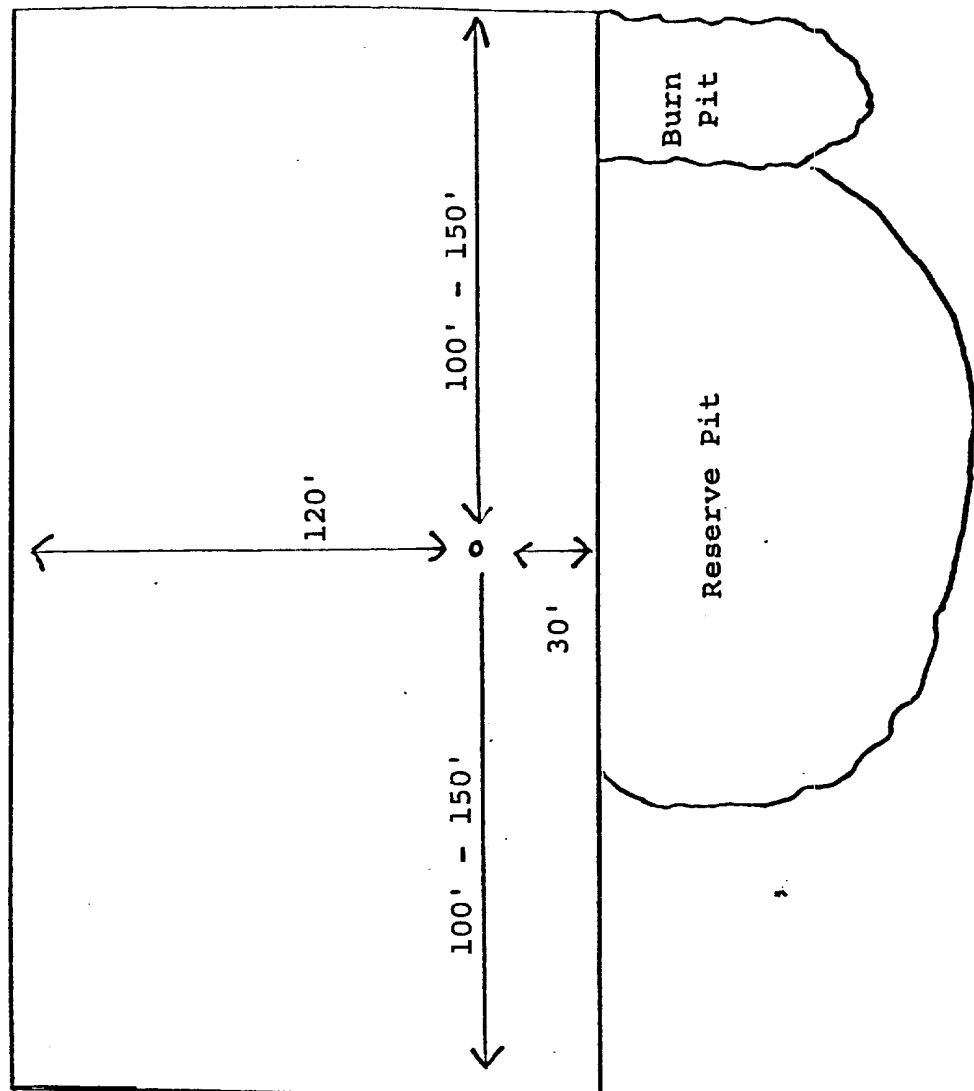
I hereby certify that I, or persons under my direct supervision, have inspected the proposed drillsite and access route; that I am familiar with the conditions which presently exist; that the statements made in this plan are, to the best of my knowledge, true and correct; and, that the work associated with the operations proposed herein will be performed by: \_\_\_\_\_

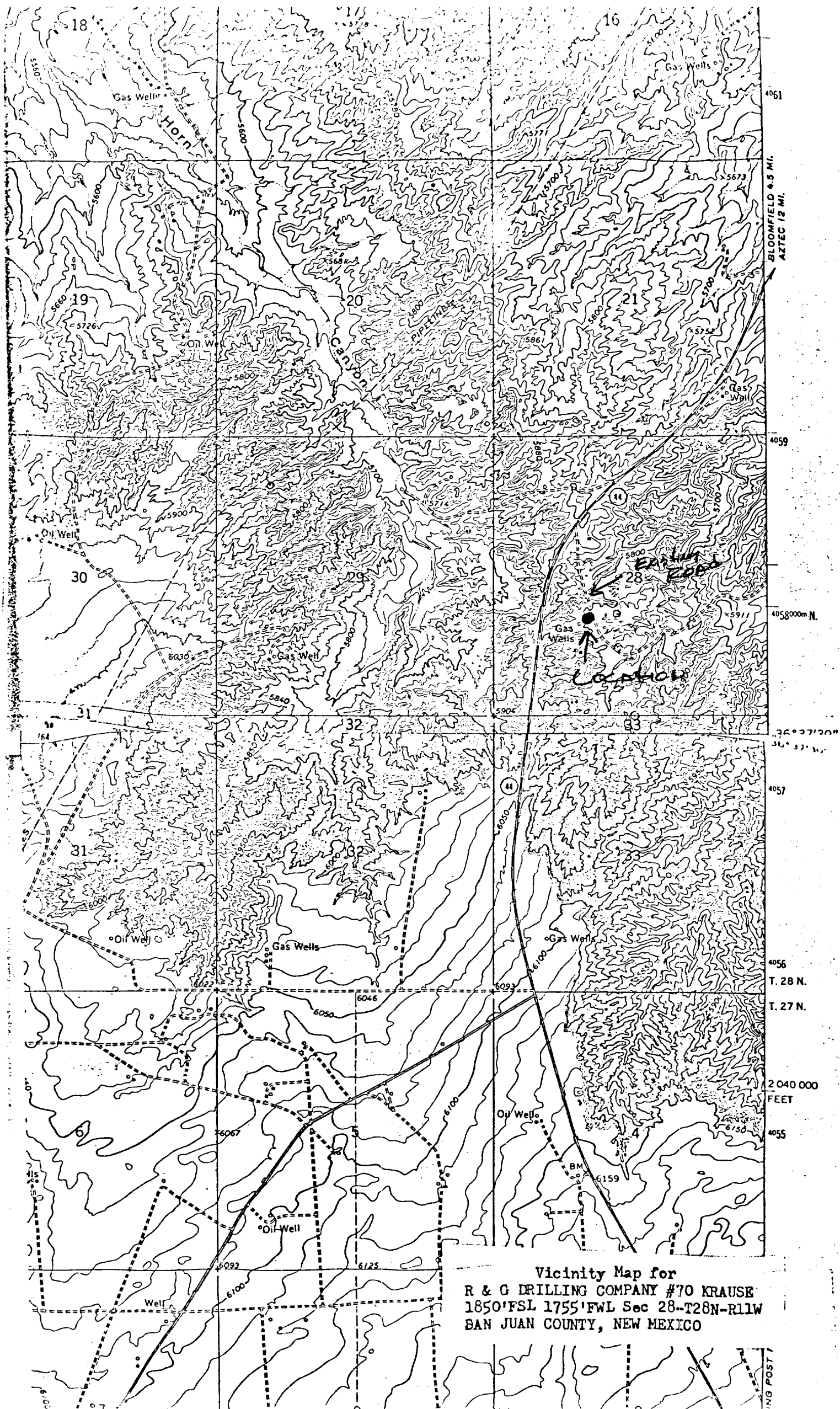
\_\_\_\_\_  
R & G Drilling Company  
and its contractors and subcontractors in conformity with this plan and the terms and conditions under which it is approved.



Ewell N. Walsh, P.E., President,  
Walsh Engineering & Production  
Corporation

LOCATION MAP  
R & G Drilling Company  
Krause No. 70  
1850' FSL, 1755' FWL, Section 28-T28N-R11W  
San Juan County, New Mexico





Vicinity Map for  
R & G DRILLING COMPANY #70 KRAUSE  
1850' FSL 1755' FWL Sec 28-T28N-R11W  
SAN JUAN COUNTY, NEW MEXICO

Seven Point Well Control Program

1. Surface Casing.  
See Application for Permit to Drill.
2. Spools and Flanges
  - A. Surface Casing - Scwd Series 600, 2000 psi W.P.
  - B. Production - Scwd Series 600, 2000 psi W.P.
  - C. Tubing Head - Series 600, 2000 psi W.P.
3. Intermediate Casing.  
None
4. Blowout Preventers  
Production Hole - 8", 2000 psi  
Fill, kill and choke manifold - 5000 psi W.P.
5. Addition Equipment (If necessary)

A. Kelly Cock	D. Pit Level Indicator
B. Bit Float	E. Sub with Valve for
C. Degasser	Drill Pipe.
6. Anticipated Bottom Hole Pressure.  
700psi. Current mud program is for 9.2 lb/gal mud with hydrostatic head of 823 psi at 1722 feet. Mud weight will be increased if necessary for higher pressures.
7. Drilling Fluid.  
Native mud with gel-chemical for logging