

UNITED STATES  
DEPARTMENT OF THE INTERIOR  
GEOLOGICAL SURVEY

30-045-24990

APPLICATION FOR PERMIT TO DRILL, DEEPEN, OR PLUG BACK

1a. TYPE OF WORK

DRILL ☒

DEEPEN ☐

PLUG BACK ☐

b. TYPE OF WELL

OIL  
WELL ☐

GAS  
WELL ☒

OTHER

SINGLE  
ZONE ☒

MULTIPLE  
ZONE ☐

2. NAME OF OPERATOR

Energy Reserves Group, Inc.

3. ADDRESS OF OPERATOR

P.O. Box 3280, Casper, Wyoming 82602

4. LOCATION OF WELL (Report location clearly and in accordance with any State requirements.)

At surface

At proposed prod. zone 1,520' FNL & 1,400' FWL

14. DISTANCE IN MILES AND DIRECTION FROM NEAREST TOWN OR POST OFFICE\*

Approximately 7 miles south of Farmington, New Mexico

15. DISTANCE FROM PROPOSED\*

LOCATION TO NEAREST  
PROPERTY OR LEASE LINE, FT.  
(Also to nearest drig. unit line, if any)

1,240'

18. DISTANCE FROM PROPOSED LOCATION\*

TO NEAREST WELL, DRILLING, COMPLETED,  
OR APPLIED FOR, ON THIS LEASE, FT.

1,300'

16. NO. OF ACRES IN LEASE

Unitized

19. PROPOSED DEPTH

1,630'

17. NO. OF ACRES ASSIGNED

TO THIS WELL  
160 (152.60)

20. ROTARY OR CABLE TOOLS

Rotary

21. ELEVATIONS (Show whether DF, RT, GR, etc.)

5,774' GR (ungraded)

22. APPROX. DATE WORK WILL START\*

Nov.-Dec., 1980

23.

PROPOSED CASING AND CEMENTING PROGRAM

| SIZE OF HOLE | SIZE OF CASING | WEIGHT PER FOOT | SETTING DEPTH | QUANTITY OF CEMENT |
|--------------|----------------|-----------------|---------------|--------------------|
| 12-1/4"      | 6-5/8"         | 24#             | 120'          | cement to surface  |
| 6-5/4"       | 4-1/2"         | 9.5#            | 1,630'        | cement to surface  |

Rotary subject to administrative  
approval per 30 CFR 190.

Energy Reserves Group, Inc. proposes to drill the above referenced well with rotary tools from the surface to T.D.

See attached plan of operations.

Gas is dedicated to El Paso Natural Gas Company.

IN ABOVE SPACE DESCRIBE PROPOSED PROGRAM: If proposal is to deepen or plug back, give data on present productive zone and proposed new productive zone. If proposal is to drill or deepen directionally, give pertinent data on subsurface locations and measured and true vertical depths. Give blowout preventer program, if any.

24.

SIGNED

*William J. Yuan*

TITLE Field Services Administrator

DATE 9-18-80

(This space for Federal or State office use)

PERMIT NO.

APPROVAL DATE

APPROVED BY

TITLE

CONDITIONS OF APPROVAL, IF ANY:

APPROVED  
AS AMENDED  
APR 10 1981  
JAMES F. SIMS  
DISTRICT ENGINEER

\*See Instructions On Reverse Side

## OIL CONSERVATION DIVISION

P. O. BOX 2088

SANTA FE, NEW MEXICO 87501

Form C-107  
Revised 10-1-78

All distances must be from the outer boundaries of the Section.

STATE OF NEW MEXICO  
ENERGY AND MINERALS DEPARTMENT

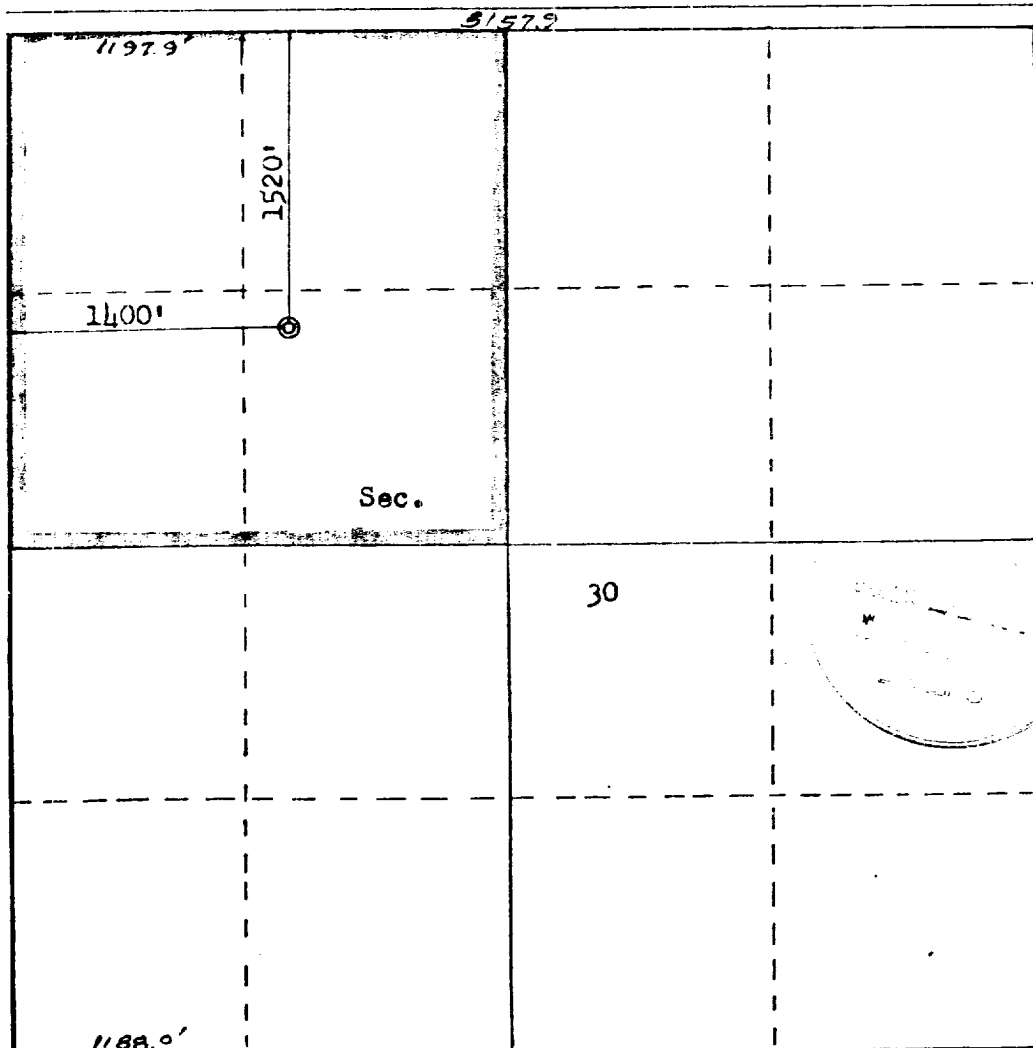
|  |   |  |   |                           |
|--|---|--|---|---------------------------|
| Operator<br><b>ENERGY RESERVES GROUP</b>   |   | Lease<br><b>GALLEGOS CANYON UNIT</b>     |   | Well No.<br><b>319</b>    |
| Unit Letter<br><b>F</b>  | Section<br><b>30</b>                          | Township<br><b>28N</b>                   | Range<br><b>12W</b>                       | County<br><b>San Juan</b> |
| Actual Footage Location of Well:<br><b>1520</b> feet from the <b>North</b> line and <b>1400</b> feet from the <b>West</b> line |   |  |   |                           |
| Ground Level Elev.<br><b>5774</b>  | Producing Formation<br><b>Pictured Cliffs</b> | Pool<br><b>West Kutz Pictured Cliffs</b> | Dedicated Acreage:<br><b>152.60</b> Acres |                           |

1. Outline the acreage dedicated to the subject well by colored pencil or hachure marks on the plat below.
2. If more than one lease is dedicated to the well, outline each and identify the ownership thereof (both as to working interest and royalty).
3. If more than one lease of different ownership is dedicated to the well, have the interests of all owners been consolidated by communitization, unitization, force-pooling, etc?

☐ Yes ☐ No If answer is "yes," type of consolidation \_\_\_\_\_

If answer is "no," list the owners and tract descriptions which have actually been consolidated. (Use reverse side of this form if necessary.) \_\_\_\_\_

No allowable will be assigned to the well until all interests have been consolidated (by communitization, unitization, forced-pooling, or otherwise) or until a non-standard unit, eliminating such interests, has been approved by the Commission.



Scale: 1"=1000'

## CERTIFICATION

I hereby certify that the information contained herein is true and complete to the best of my knowledge and belief.

*William J. Kerr*  
Name

Field Services Administrator

Position

Energy Reserves Group, Inc.

Company

9-18-80

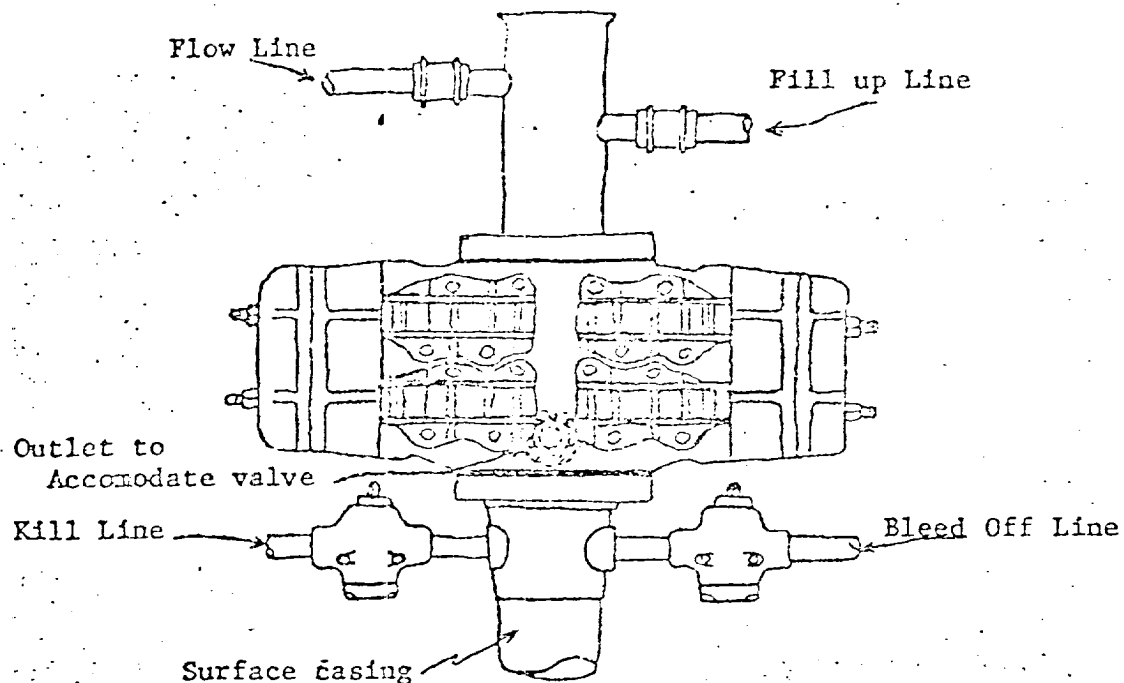
Date

I hereby certify that the well location shown on this plat was plotted from field notes of actual surveys made by me or under my supervision, and that the same is true and correct to the best of my knowledge and belief.

Date Surveyed  
September 11, 1980

Registered Professional Engineer

and Land Surveyor  
2230  
Fred B. Kerr Jr.Certificate No.  
2000  
KERR, JR.



Blowout preventer is Shaffer double hydraulic equipped with drill pipe rams in the top and blind rams in the bottom.

Blowout preventer closing unit is Kooze 30 gallon accumulator unit.

When choke manifold is used, it will be installed downstream from bleed off valve.

Kill line or bleed off line may be installed at flanged opening in blowout preventer.