

UNITED STATES  
DEPARTMENT OF THE INTERIOR  
BUREAU OF LAND MANAGEMENT

30-045-26130 CHY 5411 FARM.

APPLICATION FOR PERMIT TO DRILL, DEEPEN, OR PLUG BACK

1a. TYPE OF WORK  
 DRILL  DEEPEN  PLUG BACK

5. LEASE DESIGNATION AND SERIAL NO.  
SF - 080844

6. IF INDIAN, ALLOTTEE OR TRIBE NAME

7. UNIT AGREEMENT NAME

8. FARM OR LEASE NAME

T. L. Rhodes "B"

9. WELL NO.

1E

10. FIELD AND POOL, OR WILDCAT

Basin Dakota

11. SEC., T., R., M., OR BLK. AND SURVEY OR AREA

SW/SW, Sec. 20, T28N, R11W

12. COUNTY OR PARISH

San Juan

13. STATE

NM

b. TYPE OF WELL  
 OIL WELL  GAS WELL  OTHER   
 SINGLE ZONE  MULTIPLE ZONE

2. NAME OF OPERATOR

Amoco Production Company

3. ADDRESS OF OPERATOR

501 Airport Drive Farmington, NM 87401

4. LOCATION OF WELL (Report location clearly and in accordance with any State requirements.)  
 At surface

790' FSL X 1160' FWL

At proposed prod. zone

Same

RECEIVED  
OCT 17 1984

14. DISTANCE IN MILES AND DIRECTION FROM NEAREST TOWN OR POST OFFICE OF LAND MANAGEMENT

8 miles southwest of Bloomfield, NM

16. NO. OF ACRES IN LEASE  
1593.85

18. DISTANCE FROM PROPOSED LOCATION\* TO NEAREST WELL, DRILLING, COMPLETED, OR APPLIED FOR, ON THIS LEASE, FT.  
2000' NW

21. ELEVATIONS (Show whether DF, RT, GR, etc.)  
5724' GR

23. PROPOSED CEMENTING PROGRAM

SIZE OF HOLE	SIZE OF CASING	WEIGHT PER FOOT	SETTING DEPTH
12-1/2"	8-5/8"	24#, J-55	300'
7-7/8"	4-1/2"	10.5#, K-55	6316'

17. NO. OF ACRES ASSIGNED TO THIS WELL  
320

20. ROTARY OR CABLE TOOLS  
Rotary

22. APPROX. DATE WORK WILL START\*  
As soon as permitted

This action is subject to administrative appeal pursuant to 20 C.F.R. 290.

354 cu. ft. Class B  
2153 cu. ft. Class B  
(This string may be two staged but the cement types and volumes remain the same.)

Amoco proposes to drill the above well to further develop the Basin Dakota reservoir. The well will be drilled to the surface casing point using native mud. The well will then be drilled to TD with a low solids nondispersed mud system. Completion design will be based on open hole logs. Copy of all logs will be filed upon completion. Amoco's standard blowout prevention will be employed; see attached drawing for blowout preventer design. Upon completion the well site will be cleaned and the reserve pit filled and leveled. The gas from this well is dedicated to El Paso Natural Gas under contract No. 56,742.

IN ABOVE SPACE DESCRIBE PROPOSED PROGRAM: If proposal is to deepen or plug back, give data on present productive zone and proposed new productive zone. If proposal is to drill or deepen directionally, give pertinent data on subsurface locations and measured and true vertical depths. Give blowout preventer program, if any.

24. SIGNED BDS TITLE Admin. Supervisor  
 (This space for Federal or State office)  
 PERMIT NO. \_\_\_\_\_ APPROVAL DATE NOV 26 1984  
 APPROVED BY chz TITLE OIL CON. DIV. DIST. 3

APPROVED  
DATE 10-15-84  
AS AMENDED  
NOV 16 1984  
DATE \_\_\_\_\_  
AREA MANAGER  
FARMINGTON RESOURCE AREA

\*See Instructions On Reverse Side

OIL CONSERVATION DIVISION

STATE OF NEW MEXICO  
ENERGY AND MINERALS DEPARTMENT

P. O. BOX 2088  
SANTA FE, NEW MEXICO 87501

Form C-107  
Revised 10-1-7

All distances must be from the outer boundaries of the Section.

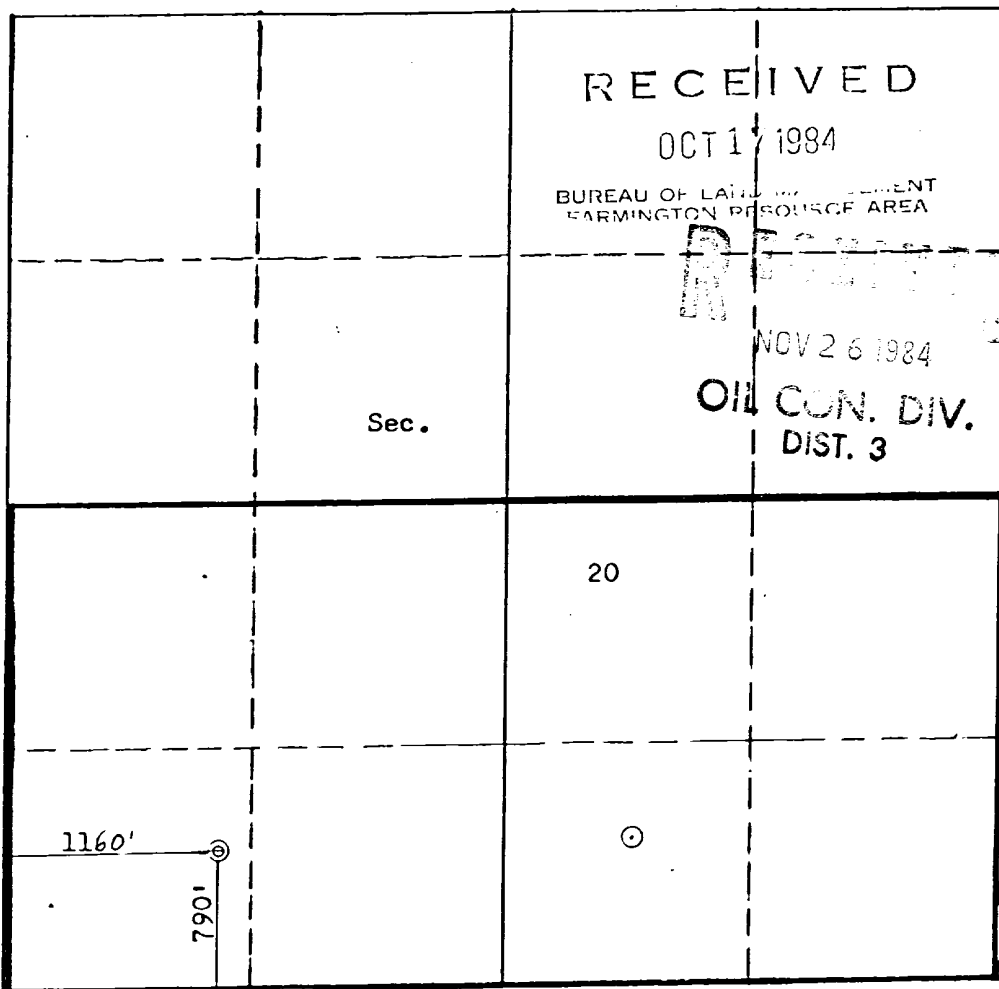
Operator <b>AMOCO PRODUCTION COMPANY</b>			Lease <b>T. L. RHODES "B"</b>		Well No. <b>1E</b>
Unit Letter <b>M</b>	Section <b>20</b>	Township <b>28N</b>	Range <b>11W</b>	County <b>San Juan</b>	
Actual Footage Location of Well: <b>790</b> feet from the <b>South</b> line and <b>1160</b> feet from the <b>West</b> line					
Ground Level Elev. <b>5724</b>	Producing Formation <b>Dakota</b>		Pool <b>Basin Dakota</b>	Dedicated Acreage: <b>320</b> Acres	

1. Outline the acreage dedicated to the subject well by colored pencil or hachure marks on the plat below.
2. If more than one lease is dedicated to the well, outline each and identify the ownership thereof (both as to working interest and royalty).
3. If more than one lease of different ownership is dedicated to the well, have the interests of all owners been consolidated by communitization, unitization, force-pooling, etc?

Yes  No If answer is "yes," type of consolidation \_\_\_\_\_

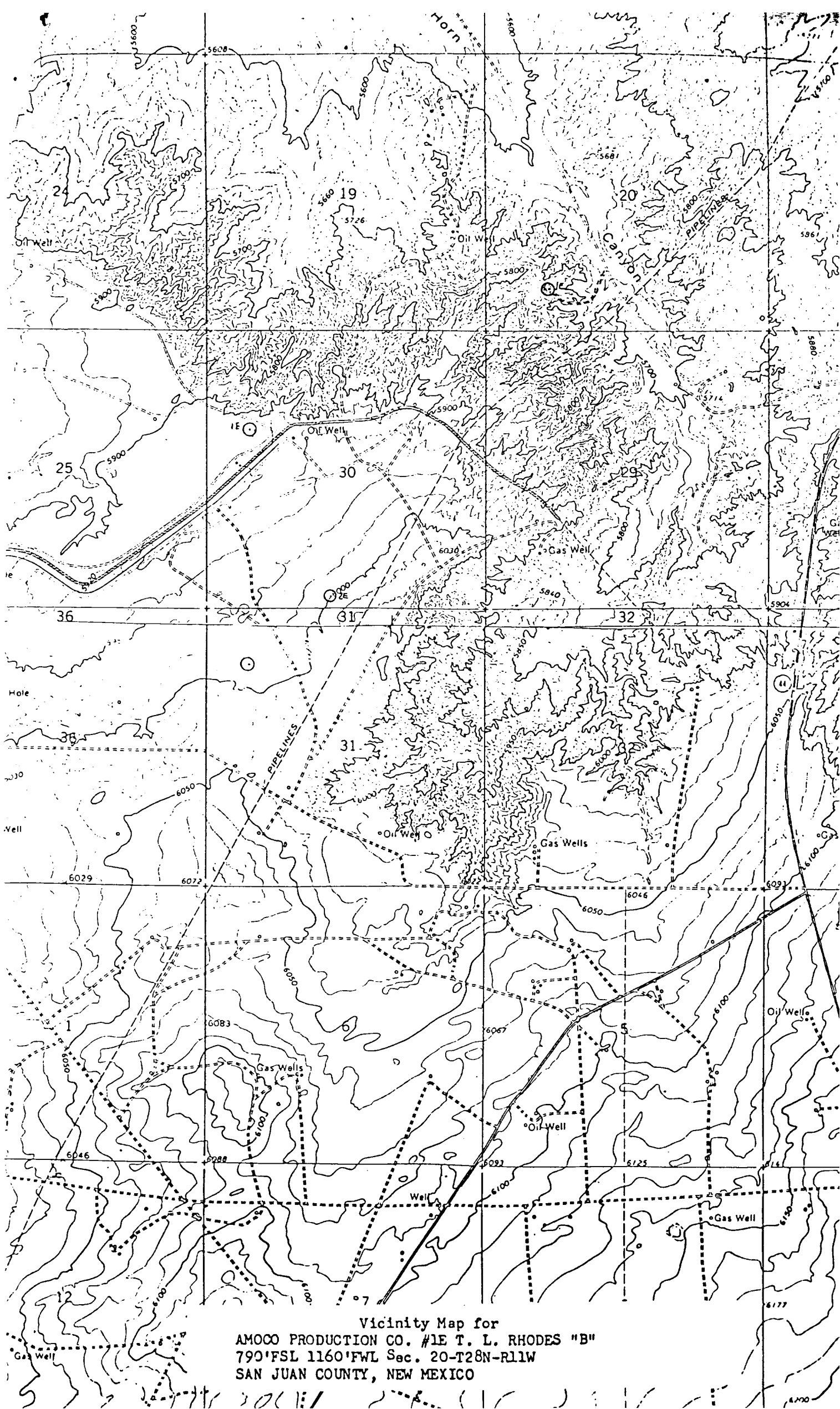
If answer is "no," list the owners and tract descriptions which have actually been consolidated. (Use reverse side of this form if necessary.) \_\_\_\_\_

No allowable will be assigned to the well until all interests have been consolidated (by communitization, unitization, forced-pooling, or otherwise) or until a non-standard unit, eliminating such interests, has been approved by the Commission.



Scale: 1"=1000'

CERTIFICATION	
I hereby certify that the information contained herein is true and complete to the best of my knowledge and belief.	
<i>B D Shaw</i>	
Name	B. D. Shaw
Position	Admin. Supervisor
Company	Amoco Production Company
Date	10-15-84
I hereby certify that the well location shown on this plat was plotted from field notes of actual surveys made by me or under my supervision, and that the same is true and correct to the best of my knowledge and belief.	
Date Surveyed	September 11, 1981
Registered Professional Engineer and Land Surveyor	<i>Fred E. Kert Jr.</i>
Certification No.	3950



Vicinity Map for  
 AMOCO PRODUCTION CO. #1E T. L. RHODES "B"  
 790'FSL 1160'FWL Sec. 20-T28N-R11W  
 SAN JUAN COUNTY, NEW MEXICO