

NEW MEXICO OIL CONSERVATION COMMISSION
WELL LOCATION AND ACREAGE DEDICATION PLAT

Form C-102
Supersedes C-128
Effective 1-1-65

All distances must be from the outer boundaries of the Section.

Operator ENERGY RESERVES GROUP		Lease GALLEGOS CANYON UNIT		Well No. 351	
Unit Letter P	Section 10	Township 28N	Range 12W	County San Juan	
Actual Footage Location of Well:					
800		feet from the South line and		810 feet from the East line	
Ground Level Elev: 5637	Producing Formation Pictured Cliffs	Pool North Pinon Fruitland Ext		Dedicated Acreage: 160 (135.39) Acres	

1. Outline the acreage dedicated to the subject well by colored pencil or hachure marks on the plat below.
2. If more than one lease is dedicated to the well, outline each and identify the ownership thereof (both as to working interest and royalty).
3. If more than one lease of different ownership is dedicated to the well, have the interests of all owners been consolidated by communitization, unitization, force-pooling, etc?

☐ Yes ☐ No If answer is "yes," type of consolidation _____

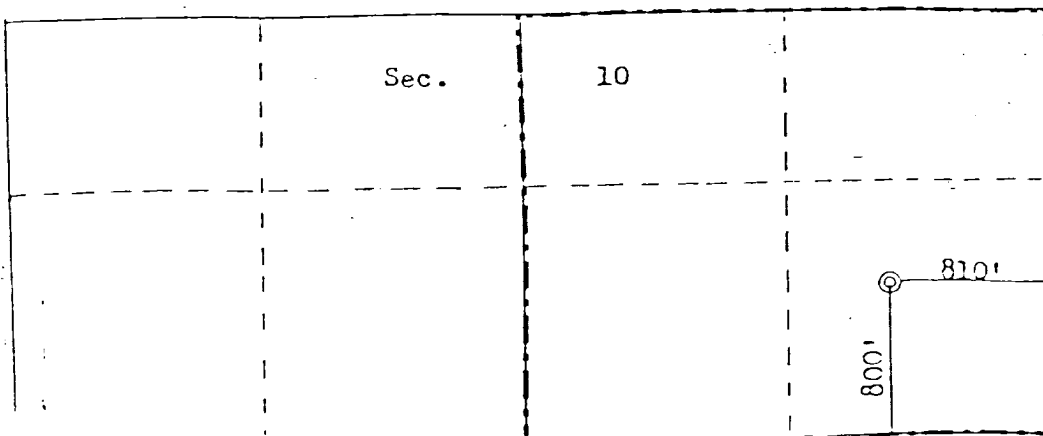
If answer is "no," list the owners and tract descriptions which have actually been consolidated. (Use reverse side of this form if necessary.) _____

No allowable will be assigned to the well until all interests have been consolidated (by communitization, unitization, forced-pooling, or otherwise) or until a non-standard unit, eliminating such interests, has been approved by the Commission.

RECEIVED
NOV 26 1985
OIL CON. DIV.
DIST. 3

GAS is dedicated to El Paso Natural Gas Company.

135.39 acres



CERTIFICATION

I hereby certify that the information contained herein is true and complete to the best of my knowledge and belief.

Name
William J. Fiant
Position
Administrator, Field Services
Company
Energy Reserves Group, Inc.
Date
5/3/85

I hereby certify that the well location shown on this plat was plotted from field notes of actual surveys made by me or under my supervision, and that the same is true and correct to the best of my knowledge and belief.

Date Surveyed
April 23, 1985
Registered Professional Engineer and Land Surveyor
Fred E. Kerr Jr.
Certificate No. 4, 1985