

5 PM CAG
1 W.R. Johnston
1 File

NEW MEXICO OIL CONSERVATION COMMISSION

NOTICE OF INTENTION TO DRILL

See Rules 101 and 1104.

If changes in the proposed plan are considered advisable, a copy of this notice showing such changes will be returned to the sender. Submit this notice in triplicate. One copy will be returned following approval.



Farmington, New Mexico

Place

July 2, 1955

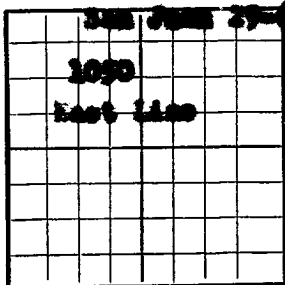
Date

Notice hereby is given that it is our intention to commence the drilling of a well to be known as

Company or Operator Lease well No. in
of Sec. T. R. N. M. P. M. County.

Pacific Northwest Pipe Line Corporation

11111111



AREA 640 ACRES

LOCATE WELL CORRECTLY

feet from (N.) (S.) line and feet from

(Give location from section lines. Cross out wrong directions.)

If state land the oil and gas lease is No.

Assignment No.

If patented land the owner is

Address

If government land the permittee is

Address

The lessee is

Address

We propose to drill well with drilling equipment as follows:

The status of a bond for this well in conformance with Rule 101 of the General Rules and Regulations of the Commission is as follows:

We propose to use the following strings of casing and to land or cement them as indicated:

Size of Hole	Size of Casing	Weight Per Foot	New or Second Hand	Depth	Handed or Cemented	Sacks Cement
13"	10-3/4"	32.384	3rd	200	200	150 Sx - 45
9"	7"	20.334	2nd	5000	5000	200 Sx - 45

If changes in the above plans become advisable we will notify you before cementing or landing casing. We estimate that the first productive oil or gas sand should occur at a depth of about feet.

Additional information:

Drill w/ mud to 9000' & set 7" casing. Drill w/ gas to 5100' and sandfree Cliff House formation w/ 10,000 gal treatment. Drill w/ gas to TD 5790, then sandfree entire zone w/ 20,000 gal treatment, test, cement, run 2-3/8" tubing and complete.

Approved

except as follows:

OIL CONSERVATION COMMISSION
Original Signed Emery C. Arnold

By

Title

Oil and Gas Inspector Dist. #3.

Pacific Northwest Pipe Line Corp.
Company or Operator

By

Position

Send communication to

Name

Address

Pacific Northwest Pipe Line Corp.

413-1/2 N. Main, Farmington, N. M.

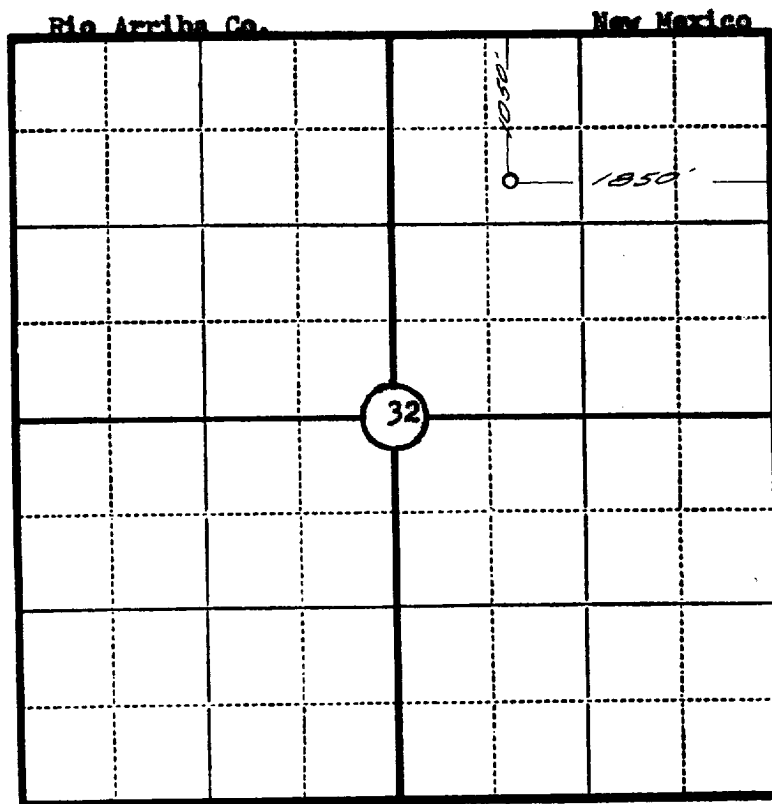
Company..... **PACIFIC NORTHWEST PIPELINE CORPORATION**

Lease..... Well No.....

Sec..... **32**, T..... **29 N.**, R..... **6 W. N.M.P.M.**

Location..... **1050' from the North line and 1850' from the East line.**

Elevation..... **6391.45 Ungraded ground**



This is to certify that the above plat was prepared from field notes of actual surveys made by me or under my supervision and that the same are true and correct to the best of my knowledge and belief.

Seal:

Jana P. Lease

Registered

Land Surveyor. N.M. Reg. No. 1463

Surveyed **June 26**, 19 **55**

OIL CONSERVATION COMMISSION		
AZTEC DISTRICT OFFICE		
No. Copies Received		5
DISTRIBUTION		
	PO. RECEIVED	
Operator		
Santa Fe	1	
Proration Office		
State Land Office	1	
U. S. G. S.	2	
Transporter		
File	1	✓