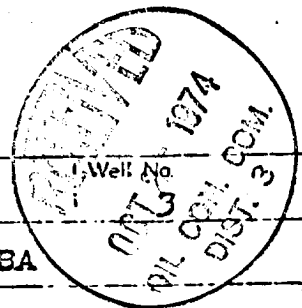


NEW MEXICO OIL CONSERVATION COMMISSION  
WELL LOCATION AND ACERAGE DEDICATION PLAT

All distances must be from the outer boundary of the Section



Operator: CONTINENTAL OIL COMPANY Lease: NM 18327 Well No: Conoco 29-4

Unit Letter: L Section: 28 Township: 29 NORTH Range: 4 WEST County: RIO ARRIBA

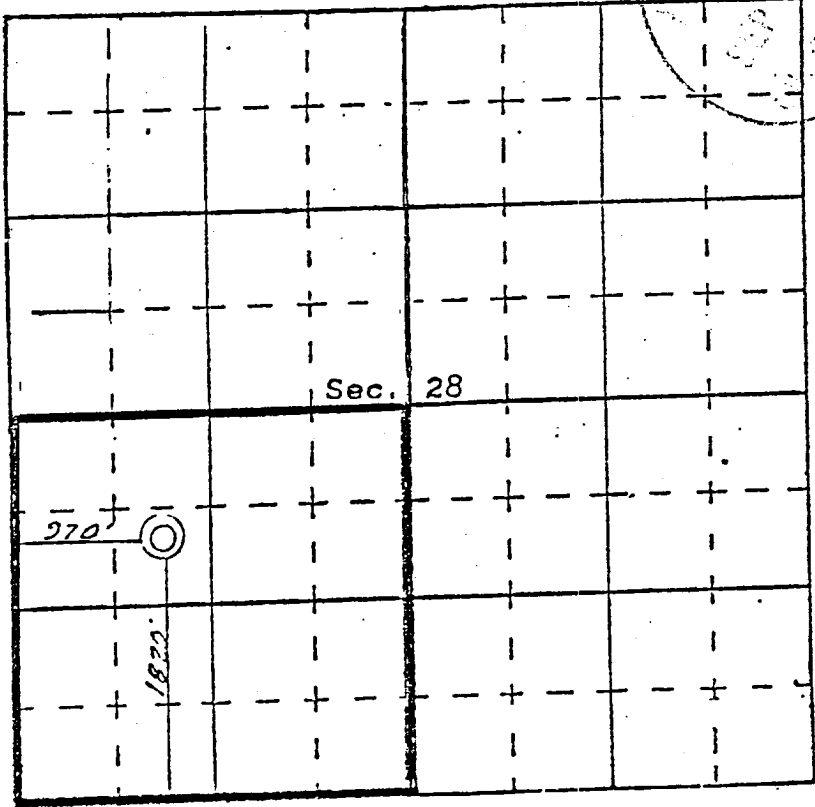
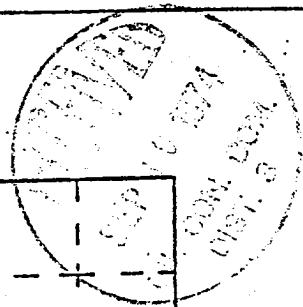
Actual Footage Location of Well: 1820 feet from the SOUTH line and 970 feet from the WEST line

Ground Level Elev. 7403.0 Producing Formation Gallup Under Gallup Mesaverde Dedicated Acreage 160 Acres

- Outline the acreage dedicated to the subject well by colored pencil or hachure marks on the plat below.
- If more than one lease is dedicated to the well, outline each and identify the ownership thereof (both as to working interest and royalty),
- If more than one lease of different ownership is dedicated to the well, have the interests of all owners been consolidated by communitization, unitization, force-pooling, etc?  
( ) Yes ( ) No if answer is "yes," type of consolidation \_\_\_\_\_

If answer is "no," list the owners and tract descriptions which have actually consolidated. (Use reverse side of this Form if necessary.) \_\_\_\_\_

No allowable will be assigned to the well until all interests have been consolidated (by communitization, unitization, forced-pooling, or otherwise) or until a non standard unit, eliminating such interests, has been approved by the Commission.



SCALE—4 INCHES EQUALS 1 MILE

CERTIFICATION

I hereby certify that the information contained herein is true and complete to the best of my knowledge and belief.

J. A. Weber  
Name  
Administrative Supervisor  
Position

CONTINENTAL OIL COMPANY  
Company

June 26, 1973  
Date

I hereby certify that the well location shown on this plat was plotted from field notes of actual surveys made by me or under my supervision, and that the same is true and correct to the best of my knowledge and belief.

12 June 1973  
Date  
James P. Leese  
Professional Engineer  
and Land Surveyor  
**JAMES P. LEESE**