

NEW MEXICO OIL CONSERVATION COMMISSION

WELL LOCATION AND ACERAGE DEDICATION PLAT

All distances must be from the outer boundaries of the Section

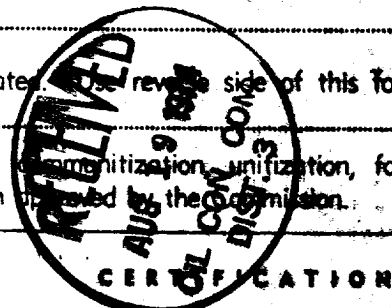
Operator Lone Star Industries, Inc.		Lease Schalk - 52		Well No 2
Unit Letter G	Section 24	Township T29N	Range R5W	County Rio Arriba
Actual Footage Location of Well: 2470 feet from the North line and 695 feet from the East line				
Ground Level Elev. 6532	Producing Formation Pictured Cliffs		Dedicated Acreage 114.30 Acres	

1. Outline the acreage dedicated to the subject well by colored pencil or hatchure marks on the plat below.
2. If more than one lease is dedicated to the well, outline each and identify the ownership thereof (both as to working interest and royalty),
3. If more than one lease of different ownership is dedicated to the well, have the interests of all owners been consolidated by communitization, unitization, force-pooling, etc?

() Yes () No If answer is "yes," type of consolidation _____

If answer is "no," list the owners and tract descriptions which have actually consolidated. (Use reverse side of this form if necessary.) _____

No allowable will be assigned to the well until all interests have been consolidated (by communitization, unitization, forced-pooling, or otherwise) or until a non standard unit, eliminating such interests, has been approved by the Commission.



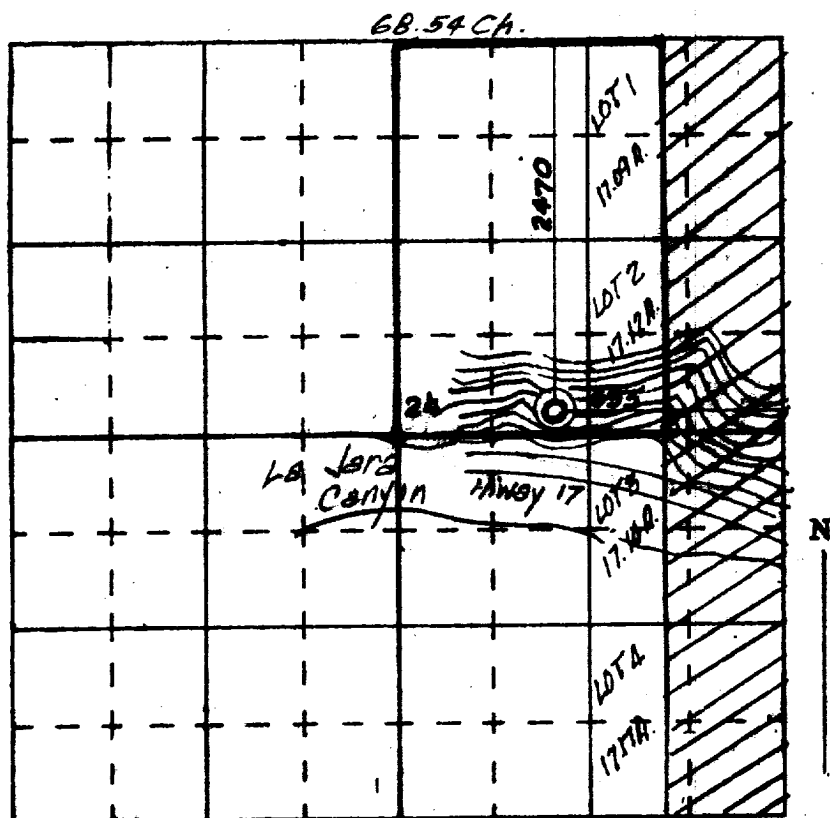
I hereby certify that the information contained herein is true and complete to the best of my knowledge and belief.

John E. Schalk
 Name _____
 John E. Schalk
 Position _____
 Agent

Company _____
 Lone Star Industries, Inc.
 Date _____
 July 31, 1974

I hereby certify that the well location shown on this plat was plotted from field notes of actual surveys made by me or under my supervision, and that the same is true and correct to the best of my knowledge and belief.

Assigned _____
 Date Surveyed _____
 Registered Professional Engineer NO. _____
 and/or Land Surveyor _____
 James _____
 1463
 Certificate No. _____



SCALE - 4 INCHES EQUALS 1 MILE 68.59 Ch