

UNITED STATES
DEPARTMENT OF THE INTERIOR
GEOLOGICAL SURVEY

APPLICATION FOR PERMIT TO DRILL, DEEPEN, OR PLUG BACK

1a. TYPE OF WORK

DRILL ☒DEEPEN ☐PLUG BACK ☐

b. TYPE OF WELL

OIL
WELL ☐GAS
WELL ☒

OTHER

SINGLE
ZONE ☒MULTIPLE
ZONE ☐

2. NAME OF OPERATOR

Continental Oil Company

3. ADDRESS OF OPERATOR

152 North Durbin St., Casper, Wyo. 82601

4. LOCATION OF WELL (Report location clearly and in accordance with any State requirements.)*

At surface

1485' FNL, 793' FWL

At proposed prod. zone

14. DISTANCE IN MILES AND DIRECTION FROM NEAREST TOWN OR POST OFFICE*

10. DISTANCE FROM PROPOSED*

LOCATION TO NEAREST
PROPERTY OR LEASE LINE, FT.
(Also to nearest drilg. unit line, if any)

16. NO. OF ACRES IN LEASE

18. DISTANCE FROM PROPOSED LOCATION*

TO NEAREST WELL, DRILLING, COMPLETED,
OR APPLIED FOR, ON THIS LEASE, FT.

19. PROPOSED DEPTH

5950'

21. ELEVATIONS (Show whether DF, RT, GR, etc.)

6565' Gr.

17. NO. OF ACRES ASSIGNED
TO THIS WELL

320

20. ROTARY OR CABLE TOOLS

Rotary

22. APPROX. DATE WORK WILL START*

February 5, 1974

23.

PROPOSED CASING AND CEMENTING PROGRAM

SIZE OF HOLE	SIZE OF CASING	WEIGHT PER FOOT	SETTING DEPTH	QUANTITY OF CEMENT
15"	10 3/4"	40.5#	200'	200 sacks Class "A"
8 3/4"	7"	20.0#	3850'	90 sacks Poz "A"
6 1/8"	4 1/2"	10.5#	5950'	340 sacks Class "A"

It is proposed to drill the subject well to test for commercial gas production from the Mesaverde formation. The drilling rig will be equipped with a blowout preventer which will be tested daily. Also, all equipment used in drilling operations will be equipped with all safety devices prescribed by the U.S. Forest Service, and all operations will be conducted according to their rules and regulations.

IN ABOVE SPACE DESCRIBE PROPOSED PROGRAM: If proposal is to deepen or plug back, give data on present productive zone and proposed new productive zone. If proposal is to drill or deepen directionally, give pertinent data on subsurface locations and measured and true vertical depths. Give blowout preventer program, if any.

24.

SIGNED



TITLE Administrative Supervisor

DATE 2/1/74

(This space for Federal or State office use)

PERMIT NO.

APPROVAL DATE

APPROVED BY

TITLE

DATE

CONDITIONS OF APPROVAL, IF ANY:

*See Instructions On Reverse Side

USGS(5) NMOCC(2) File

**NEW MEXICO OIL CONSERVATION COMMISSION
WELL LOCATION AND ACERAGE DEDICATION PLAT**

All distances must be from the outer boundaries of the Section

Operator CONTINENTAL OIL COMPANY			Lease Conoco 29-4		Well No 7
Unit Letter E	Section 20	Township 29 NORTH	Range 4 WEST	County RIO ARriba	

Actual Footage Location of Well: **1485** feet from the **NORTH** line and **793** feet from the **WEST** line

Ground Level Elev. **6565.0** Producing Formation **Mesaverde** Pool **Blanco Mesaverde** Dedicated Acreage **320** Acres ☒

1. Outline the acreage dedicated to the subject well by colored pencil or hatchure marks on the plat below.
2. If more than one lease is dedicated to the well, outline each and identify the ownership thereof (both as to working interest and royalty).
3. If more than one lease of different ownership is dedicated to the well, have the interests of all leases been consolidated by communization, unitization, force-pooling, etc?

☐ Yes ☐ No If answer is "yes," type of consolidation _____

If answer is "no," list the owners and tract descriptions which have actually consolidated. (Use reverse side of this form if necessary.) _____

No allowable will be assigned to the well until all interests have been consolidated (by communization, unitization, forced-pooling, or otherwise) or until a non standard unit, eliminating such interests, has been approved by the Commission.

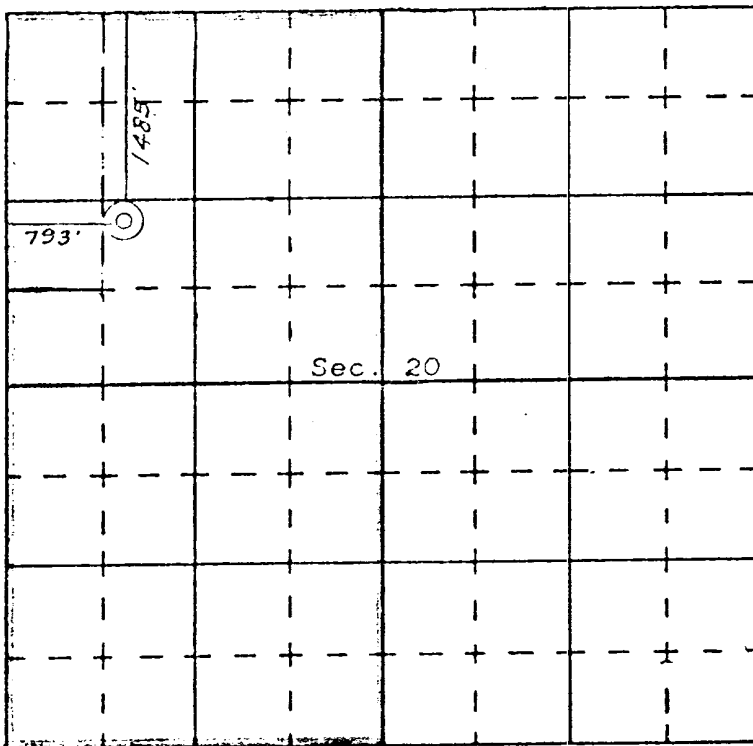
CERTIFICATION

I hereby certify that the information contained herein is true and complete to the best of my knowledge and belief.

Name *J. A. Urban*
 Position Administrative Supervisor
 Company Continental Oil Company
 Date February 1, 1974

I hereby certify that the well location shown on this plat was plotted from field notes of actual surveys made by me or under my supervision, and that the same is true and correct to the best of my knowledge and belief.

Date Surveyed 28 January, 1974
James P. Leese
 Registered Professional Engineer
 Oil and Gas Surveyor
JAMES P. LEESE
 1463
 Certificate No. _____





Production Department
Casper Division

Western Hemisphere Petroleum Division
Continental Oil Company
152 North Durbin
Casper, Wyoming 82601
(307) 234-7311

February 1, 1974

Mr. Jerry W. Long (5)
District Engineer
U. S. Geological Survey
P.O. Box 1809
Durango, Colorado 81301

Dear Mr. Long:

Development Plan For Surface Use
Gas Well Drilling Program
East San Juan Field
Rio Arriba County, New Mexico
File: PC-410-CF

Continental Oil Company plans development gas well drilling operations in the subject area, and the following "Development Plan For Surface Use" will apply to the location listed below:

Conoco 29-4 No. 7
1485' FNL, 793' FWL
Sec. 20, T29N, R4W

Development Plan For Surface Use

1. As shown on the attached map, access will be from New Mexico Highway No. 17.
2. A new road, as previously approved by the U. S. Forest Service, will be constructed to the location. Access from Highway No. 17 has been inspected and approved by the New Mexico State Highway Department, and the road will be constructed according to U. S. Forest Service specifications.
3. There are no other wells drilled within a one-mile radius of the proposed location.
4. Covered in Item No. 2.
5. No tank battery is planned at this time; however, if condensate production makes the setting of a tank necessary, it will be placed directly adjacent to the well, as specified by the U. S. Forest Service, and production will be trucked from the location. A gas sales line, if needed, will be installed under the master pipeline plan as shown on the attached map.

Mr. Jerry W. Long
Page 2
February 1, 1974

Development Plan For Surface Use - Cont'd.

6. A 30' x 50' water pit will be constructed adjacent to the access road approximately half way between the well location and Highway No. 17. Ground water will be collected in the pit for drilling.
7. Contract for the drilling operations will obligate the Contractor to keep the location and right-of-ways clean of debris at all times. A burn pit at the drillsite will be used to dispose of all burnable materials. All unburnable materials will be buried or hauled away to U. S. Forest Service designated dumping areas. A pit toilet will be provided by the Contractor for personnel use.
8. No camps will be constructed.
9. No airstrips are planned.
10. The attached Rig Layout plat indicates the general dimensions and location of the various components to be used in the drilling operations.
11. Topsoil will be stockpiled and used to reshape the location after operations are completed. Reseeding and reshaping the location will be subject to U. S. Forest Service specifications.
12. The U. S. Forest Service has inspected the location, staked out the access road and approved the location and construction of the water hole. Mr. B. E. Anderson, Production Superintendent for this area, may be reached by phone at Farmington, New Mexico, No. 327-9557.

Very truly yours,

Original Signed By:

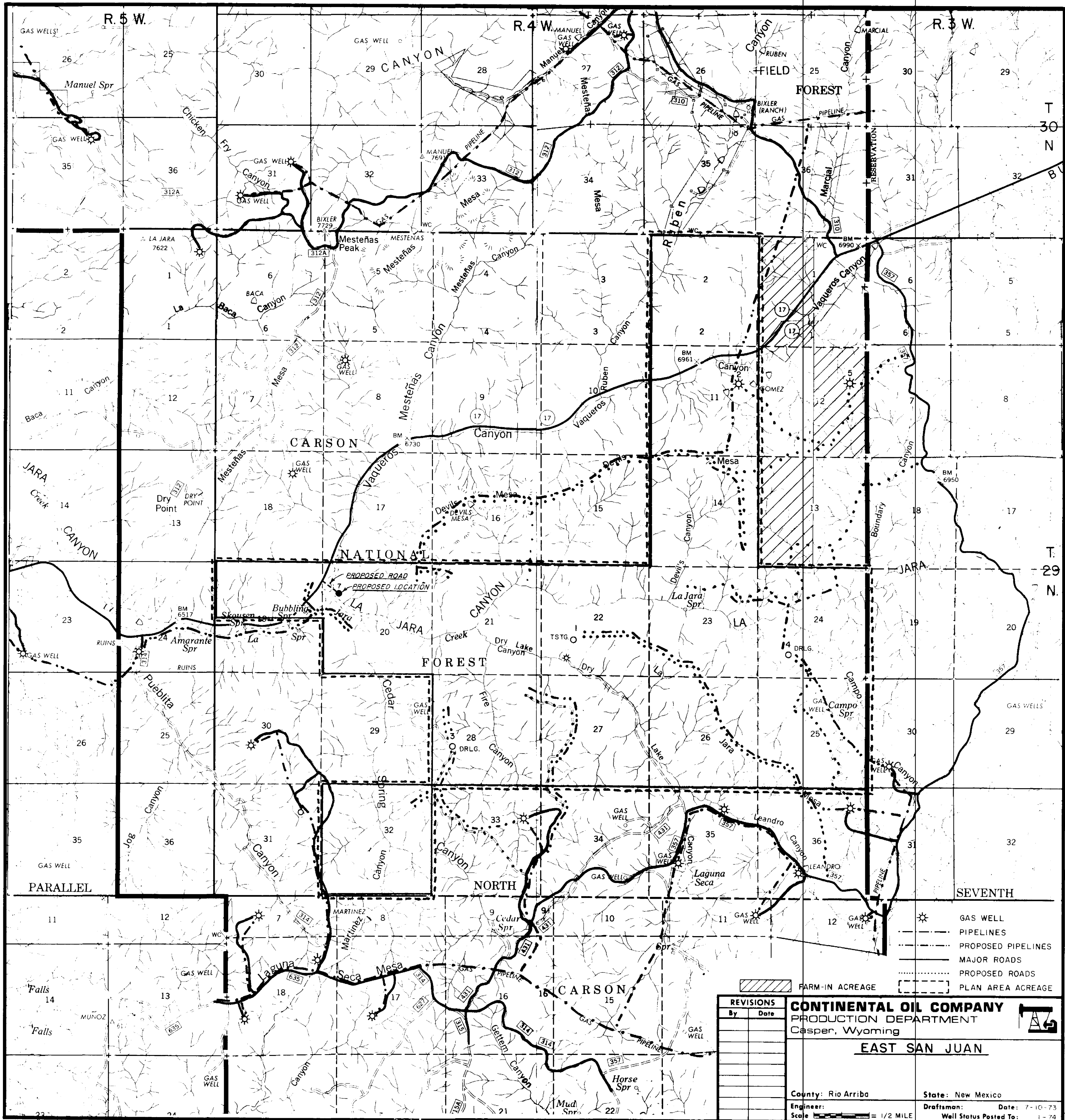
J. A. UBBEN

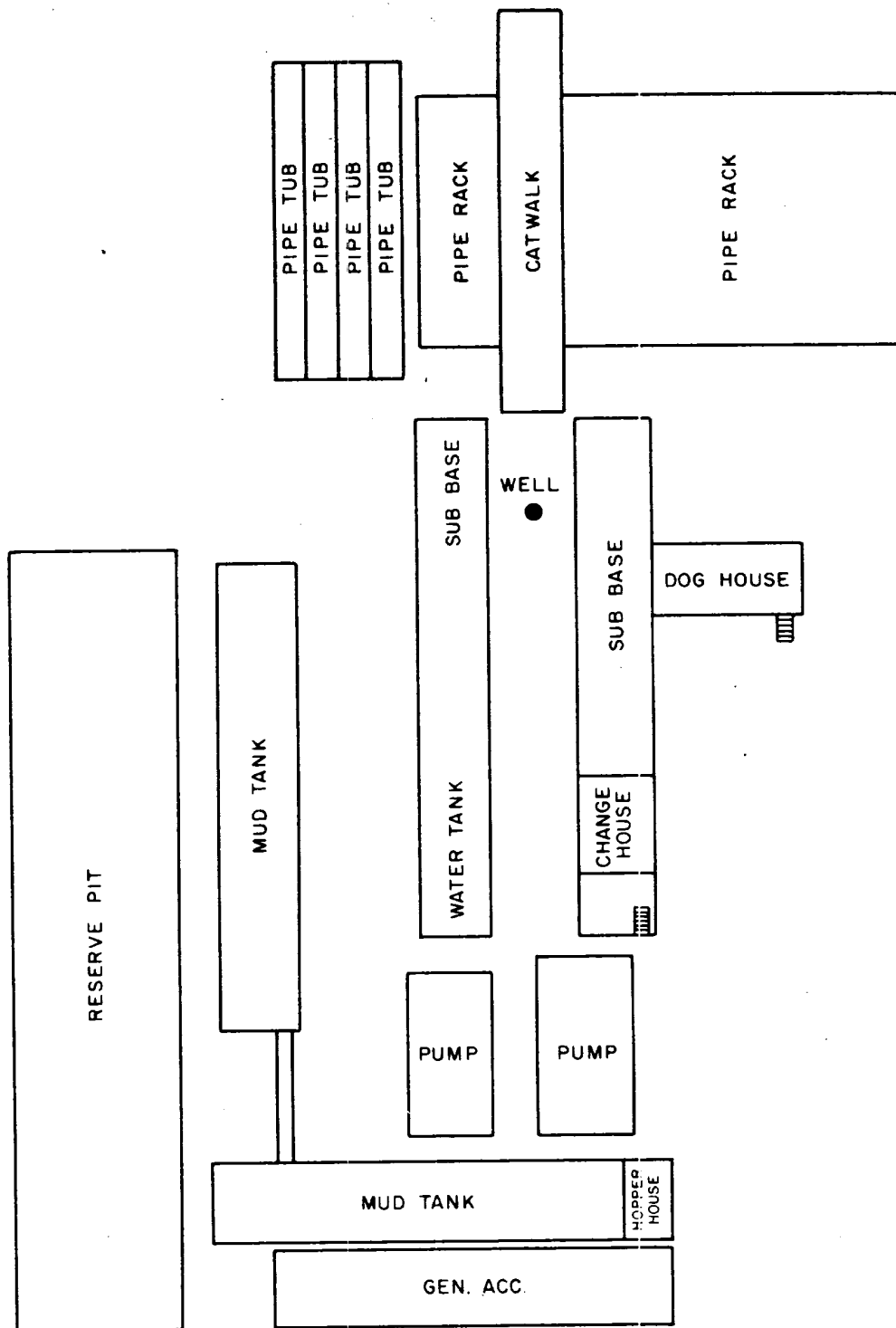
J. A. Ubben

Administrative Supervisor

bjs

CC: Mr. Larry A. Soehlig
District Forest Ranger
Gobernador District
Blanco, New Mexico 87412





CONTINENTAL OIL COMPANY
 PRODUCTION DEPARTMENT
 Casper, Wyoming



TYPICAL RIG LAYOUT

County: Rio Arriba

State: New Mexico

Engineer:

Draftsman: B.S. Date: 1-74