

UNITED STATES
DEPARTMENT OF THE INTERIOR
GEOLOGICAL SURVEY

30-039-21028

APPLICATION FOR PERMIT TO DRILL, DEEPEN, OR PLUG BACK

1a. TYPE OF WORK

DRILL ☒DEEPEN ☐PLUG BACK ☐

b. TYPE OF WELL

OIL
WELL ☐GAS
WELL ☒

OTHER

SINGLE
ZONE ☒MULTIPLE
ZONE ☐

2. NAME OF OPERATOR

Northwest Pipeline Corporation

3. ADDRESS OF OPERATOR

P.O. Box 90 Farmington, N.M. 87401

4. LOCATION OF WELL (Report location clearly and in accordance with any State requirements.)*
At surface1520' FNL & 900' FEL
At proposed prod. zone

14. DISTANCE IN MILES AND DIRECTION FROM NEAREST TOWN OR POST OFFICE*

40 miles East of Bloomfield, N.M.

15. DISTANCE FROM PROPOSED*

LOCATION TO NEAREST
PROPERTY OR LEASE LINE, FT.
(Also to nearest drlg. unit line, if any)

16. NO. OF ACRES IN LEASE

17. NO. OF ACRES ASSIGNED
TO THIS WELL

320

18. DISTANCE FROM PROPOSED LOCATION*
TO NEAREST WELL, DRILLING, COMPLETED,
OR APPLIED FOR, ON THIS LEASE, FT.

19. PROPOSED DEPTH

6240

20. ROTARY OR CABLE TOOLS

Rotary

21. ELEVATIONS (Show whether DF, RT, GR, etc.)

6848 GR.

22. APPROX. DATE WORK WILL START*

November 1, 1974

23.

PROPOSED CASING AND CEMENTING PROGRAM

SIZE OF HOLE	SIZE OF CASING	WEIGHT PER FOOT	SETTING DEPTH	QUANTITY OF CEMENT
13-3/4	9-5/8	32.3	200	Circ
8-3/4	7	20.0	4114	320 cu. ft.
6-1/4	4-1/2	10.5	6240	370 cu. ft.

Selectively perforate and sand water frac the Mesa Verde formation.

The East half of Section 9 is dedicated to this well.

IN ABOVE SPACE DESCRIBE PROPOSED PROGRAM: If proposal is to deepen or plug back, give data on present productive zone and proposed new productive zone. If proposal is to drill or deepen directionally, give pertinent data on subsurface locations and measured and true vertical depths. Give blowout preventer program, if any.

24.

SIGNED

O.B. Whitenburg
js O.B. Whitenburg

TITLE Production & Drilling Engineer

9-20-74

(This space for Federal or State office use)

PERMIT NO.

APPROVAL DATE

APPROVED BY

TITLE

DATE

CONDITIONS OF APPROVAL, IF ANY:

*See Instructions On Reverse Side

**NEW MEXICO OIL CONSERVATION COMMISSION
WELL LOCATION AND ACREAGE DEDICATION PLAT**

Form C-102
Supersedes C-128
Effective 1-1-65

All distances must be from the outer boundaries of the Section.

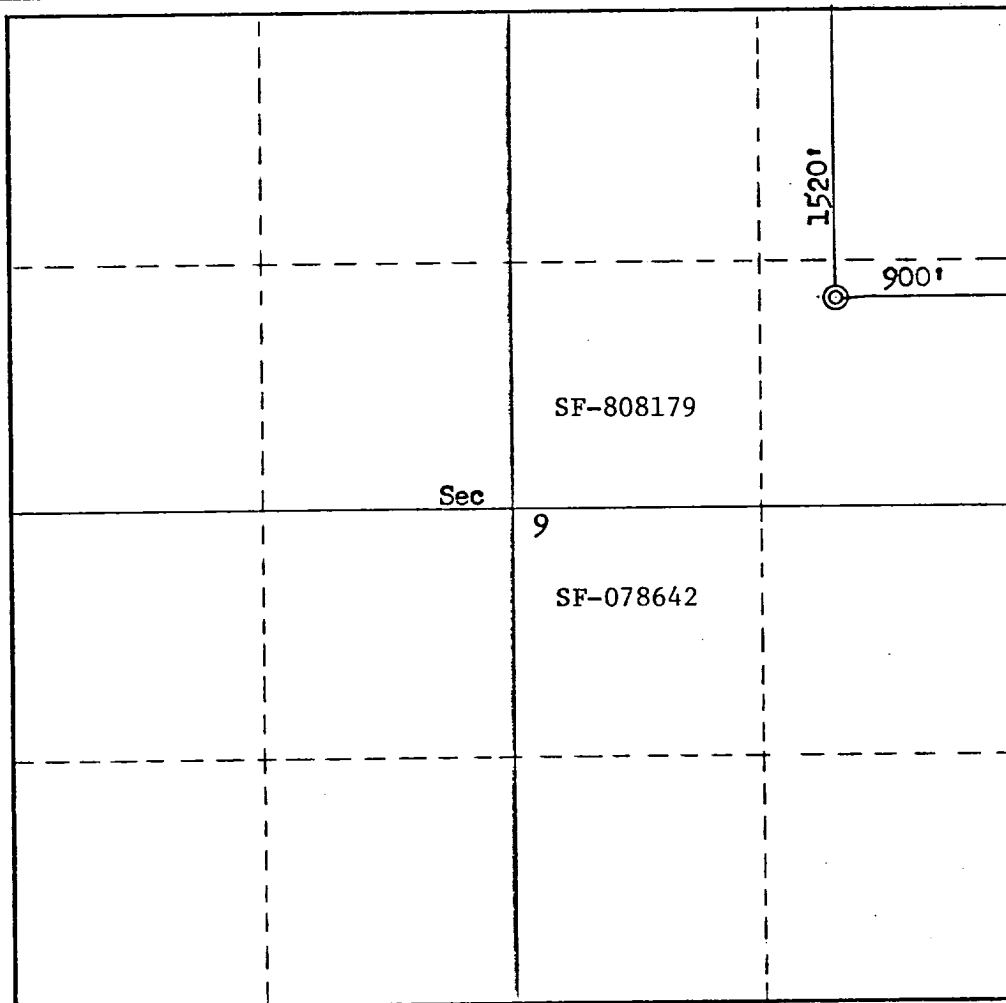
Operator Northwest Pipeline Corporation			Lease San Juan 29-5 Unit		Well No. 61
Unit Letter H	Section 9	Township 29N	Range 5W	County Rio Arriba	
Actual Footage Location of Well: 1520 feet from the North line and 900 feet from the East line					
Ground Level Elev. 6847	Producing Formation Mesa Verde		Pool Blanco Mesa Verde		Dedicated Acreage: 320 Acres

1. Outline the acreage dedicated to the subject well by colored pencil or hachure marks on the plat below.
2. If more than one lease is dedicated to the well, outline each and identify the ownership thereof (both as to working interest and royalty).
3. If more than one lease of different ownership is dedicated to the well, have the interests of all owners been consolidated by communitization, unitization, force-pooling, etc?

☐ Yes ☒ No If answer is "yes," type of consolidation _____

If answer is "no," list the owners and tract descriptions which have actually been consolidated. (Use reverse side of this form if necessary.) SE 1/4, NE 1/4, Sec. 9, T29N, R5W

No allowable will be assigned to the well until all interests have been consolidated (by communitization, unitization, forced-pooling, or otherwise) or until a non-standard unit, eliminating such interests, has been approved by the Commission.



CERTIFICATION

I hereby certify that the information contained herein is true and complete to the best of my knowledge and belief.

Name O.B. Whitenburg js

Position
Production & Drilling Eng.

Company
Northwest Pipeline Corp.

Date September 20, 1974

I hereby certify that the well location shown on this plat was plotted from field notes of actual surveys made by me or under my supervision, and that the same is true and correct to the best of my knowledge and belief.

Date Surveyed
September 13, 1974

Registered Professional Engineer
and/or Land Surveyor

Fred B. Kerr Jr.

Certificate No.

3950

Northwest Pipeline Corporation



PRODUCTION & DRILLING
P. O. BOX 90
FARMINGTON, NEW MEXICO 87401



September 20, 1974

United States Geological Survey
P.O. Box 1809
Durango, Colorado 81301

Re: Application for Permit to Drill
San Juan 29-5 Unit #61
NE 1/4 Sec 9, T29N, R5W

Gentlemen:

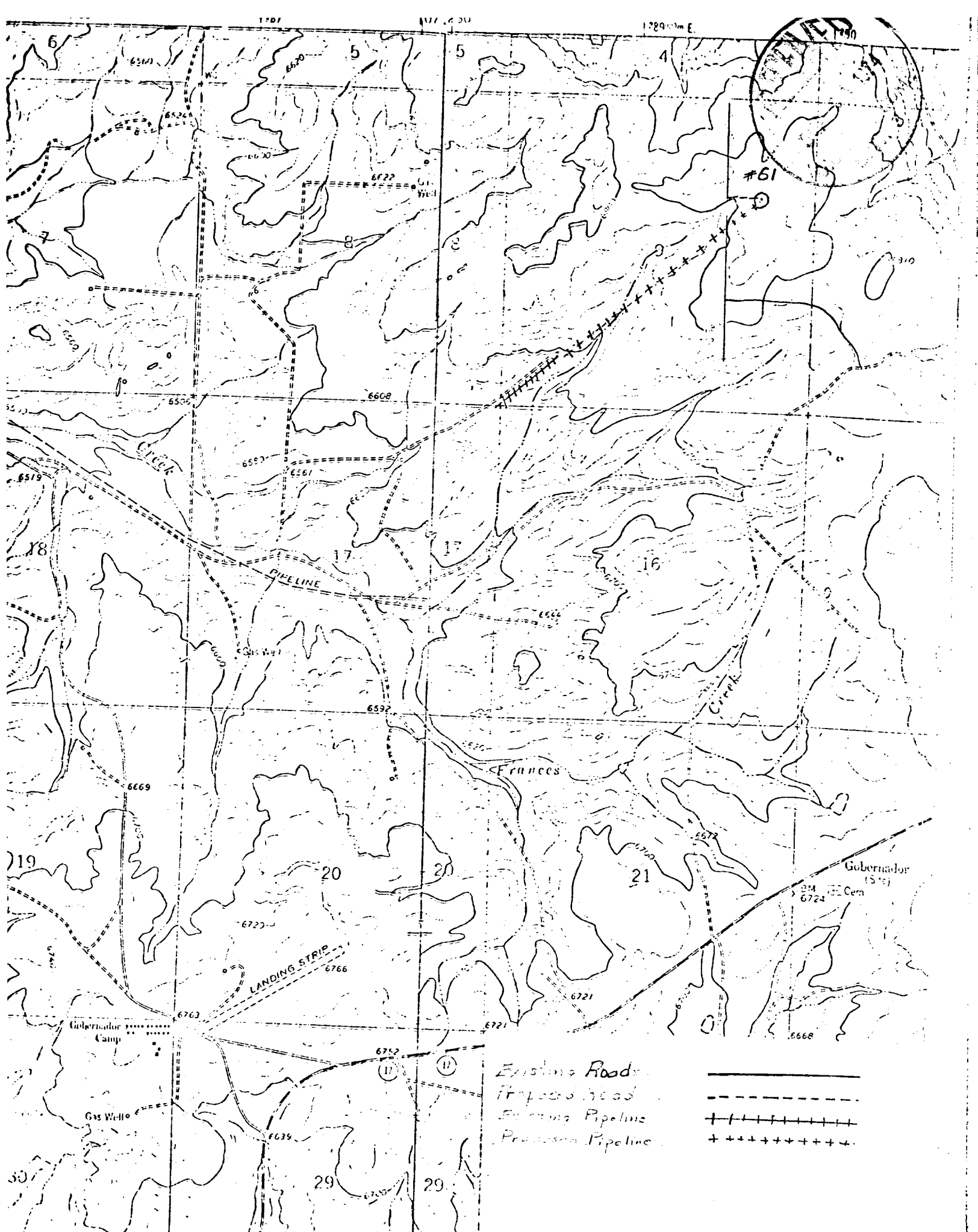
Information regarding existing roads, pipelines, flowline, etc., relative to the above well location are included on the enclosed attachments. Water for drilling and completion operation will be obtained from the San Juan 29-6 Water Well #1 located in the NW 1/4 SW 1/4 Section 28, T29N, R6W. Waste disposal will be burned in the burn pit, latrine or reserve pit. There will be no camp or airstrip associated with drilling this well. Upon completion or abandonment of this well the location will be cleaned, leveled, and a dry hole marker placed, if applicable.

Yours truly,
NORTHWEST PIPELINE CORPORATION


O. B. Whitenburg

Production & Drilling Engineer

OBW/js



LOCATION AND EQUIPMENT LAYOUT

San Juan 29-5 Unit #61

