

UNITED STATES
DEPARTMENT OF THE INTERIOR
GEOLOGICAL SURVEY

30-039-21122

5. LEASE DESIGNATION AND SERIAL NO.

SF 078278

6. IF INDIAN, ALLOTTEE OR TRIBE NAME

7. UNIT AGREEMENT NAME

San Juan 29-6 UNIT

8. FARM OR LEASE NAME

San Juan 29-6 Unit

9. WELL NO.

34A

10. FIELD AND POOL, OR WILDCAT

Blanco Mesa Verde

11. SEC., T., R., M., OR BLK.
AND SURVEY OR AREA

Sec. 14, T 29N, R6W NMPM

12. COUNTY OR PARISH

13. STATE

Rio Arriba

New Mexico

1a. TYPE OF WORK

DRILL ☒DEEPEN ☐PLUG BACK ☐

b. TYPE OF WELL

OIL
WELL ☐GAS
WELL ☒

OTHER

SINGLE
ZONE ☒MULTIPLE
ZONE ☐

2. NAME OF OPERATOR

Northwest Pipeline Corporation

3. ADDRESS OF OPERATOR

P.O. Box 90 Farmington, New Mexico 87401

4. LOCATION OF WELL (Report location clearly and in accordance with any State requirements.)*

At surface

910' FEL & 1840' FSL

At proposed prod. zone

As Above

14. DISTANCE IN MILES AND DIRECTION FROM NEAREST TOWN OR POST OFFICE*

15. DISTANCE FROM PROPOSED*

LOCATION TO NEAREST
PROPERTY OR LEASE LINE, FT.
(Also to nearest drlg. unit line, if any)

16. NO. OF ACRES IN LEASE

17. NO. OF ACRES ASSIGNED
TO THIS WELL18. DISTANCE FROM PROPOSED LOCATION*
TO NEAREST WELL, DRILLING, COMPLETED,
OR APPLIED FOR, ON THIS LEASE, FT.

19. PROPOSED DEPTH

6075'

20. ROTARY OR CABLE TOOLS

Rotary

21. ELEVATIONS (Show whether DF, RT, GR, etc.)

6714 GR

22. APPROX. DATE WORK WILL START*

September 15, 1975

23.

PROPOSED CASING AND CEMENTING PROGRAM

| SIZE OF HOLE | SIZE OF CASING | WEIGHT PER FOOT | SETTING DEPTH | QUANTITY OF CEMENT |
|--------------|----------------|-----------------|---------------|--------------------|
| 13 3/4 | 9 5/8 | 36 | 200 | 180 SX |
| 3 5/8 | 7 | 20 | 3945 | 165 SX |
| 6 1/4 | 4 1/2 liner | 10.5 | 6075 | 215 SX |

Selectively perforate & stimulate the Mesa Verde Formation.

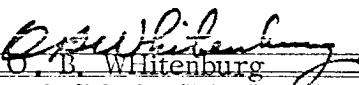
A BOP Will be installed after the 9 5/8" surface casing has been run & connected.
All subsequent work will be conducted through the BOP.

The east half of section 14 is dedicated to this well.

IN ABOVE SPACE DESCRIBE PROPOSED PROGRAM: If proposal is to deepen or plug back, give data on present productive zone and proposed new productive zone. If proposal is to drill or deepen directionally, give pertinent data on subsurface locations and measured and true vertical depths. Give blowout preventer program, if any.

24.

SIGNED


B. Whitenburg

TITLE Sr. Prod. & Drlg. ENgr.

DATE July 25, 1975

(This space for Federal or State office use)

PERMIT NO.

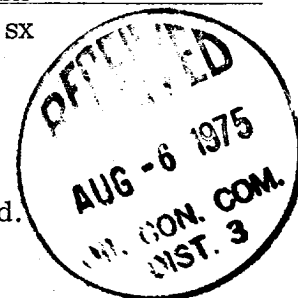
APPROVAL DATE

APPROVED BY

TITLE

DATE

CONDITIONS OF APPROVAL, IF ANY:



**NEW MEXICO OIL CONSERVATION COMMISSION
WELL LOCATION AND ACREAGE DEDICATION PLAT**

Form C-102
Supersedes C-128
Effective 1-1-65

All distances must be from the outer boundaries of the Section.

| | | | | |
|---|--|------------------------------------|---------------------------------|-----------------------------|
| Operator Northwest Pipeline Corporation | | Lease San Juan 29-6 Unit | | Well No. 34A |
| Unit Letter I | Section 14 | Township 29N | Range 6W | County Rio Arriba |
| Actual Footage Location of Well: 1840 feet from the South line and 910 feet from the East line | | | | |
| Ground Level Elev. 6714 | Producing Formation Mesa Verde | Pool Blanco Mesa Verde | Dedicated Acreage 320 | Acres |

1. Outline the acreage dedicated to the subject well by colored pencil or hachure marks on the plat below.
2. If more than one lease is dedicated to the well, outline each and identify the ownership thereof (both as to working interest and royalty).
3. If more than one lease of different ownership is dedicated to the well, have the interests of all leases been consolidated by communitization, unitization, force-pooling, etc?

☐ Yes ☒ No If answer is "yes," type of consolidation _____

If answer is "no," list the owners and tract descriptions which have actually been consolidated. (If reverse side of this form if necessary.) NE/4 SE/4, Sec. 14, T29N, R6W

No allowable will be assigned to the well until all interests have been consolidated (by communitization, unitization, forced-pooling, or otherwise) or until a non-standard unit, eliminating such interests, has been approved by the Commission.

CERTIFICATION

I hereby certify that the information contained herein is true and complete to the best of my knowledge and belief.

Name

O B. Whitenburg

Position

Sr. Prod. & Drlg. Engr.

Company

Northwest Pipeline Corp.

Date

July 25, 1975

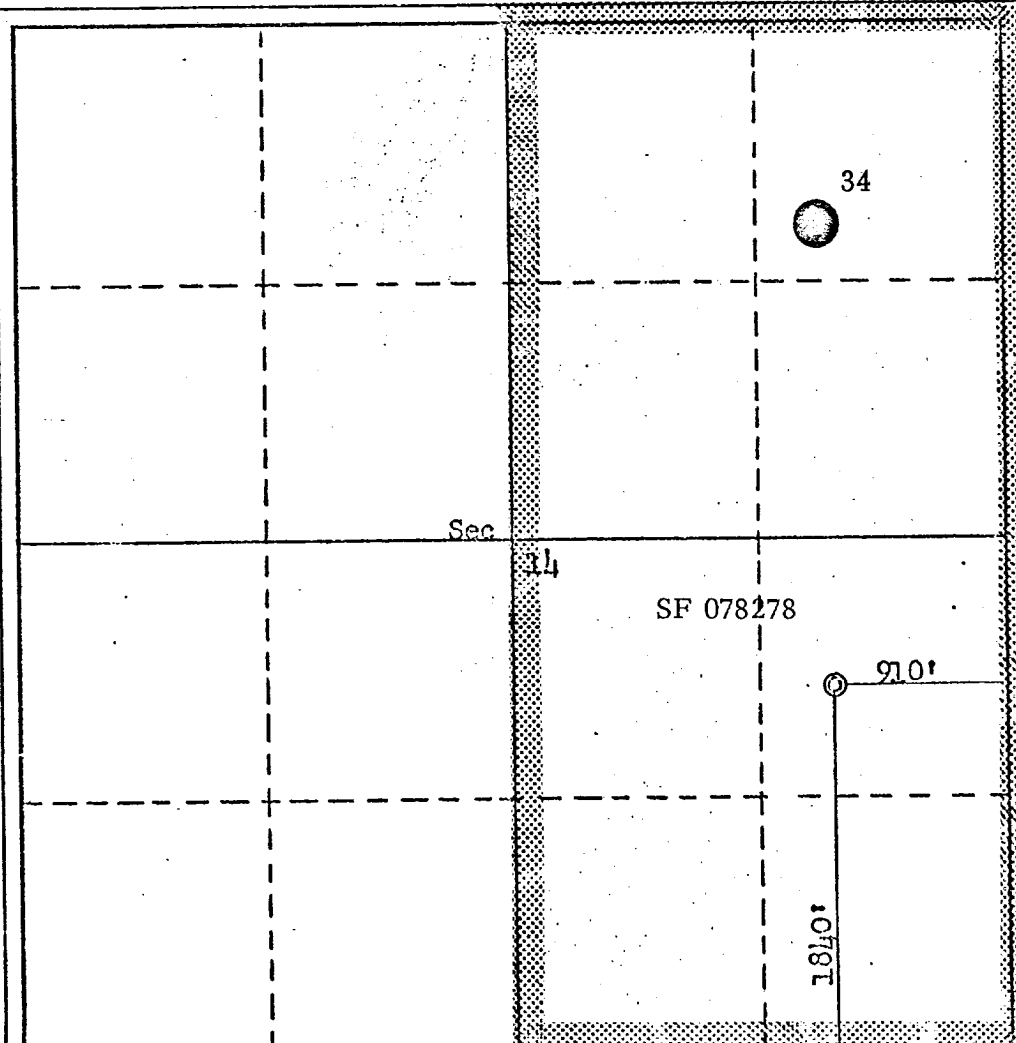
I hereby certify that the well location shown on this plat was plotted from field notes of actual surveys made by me or under my supervision, and that the same is true and correct to the best of my knowledge and belief.

Date Surveyed

April 20, 1975

Registered Professional Engineer
and/or Land Surveyor

Fred R. Kerr, Jr.

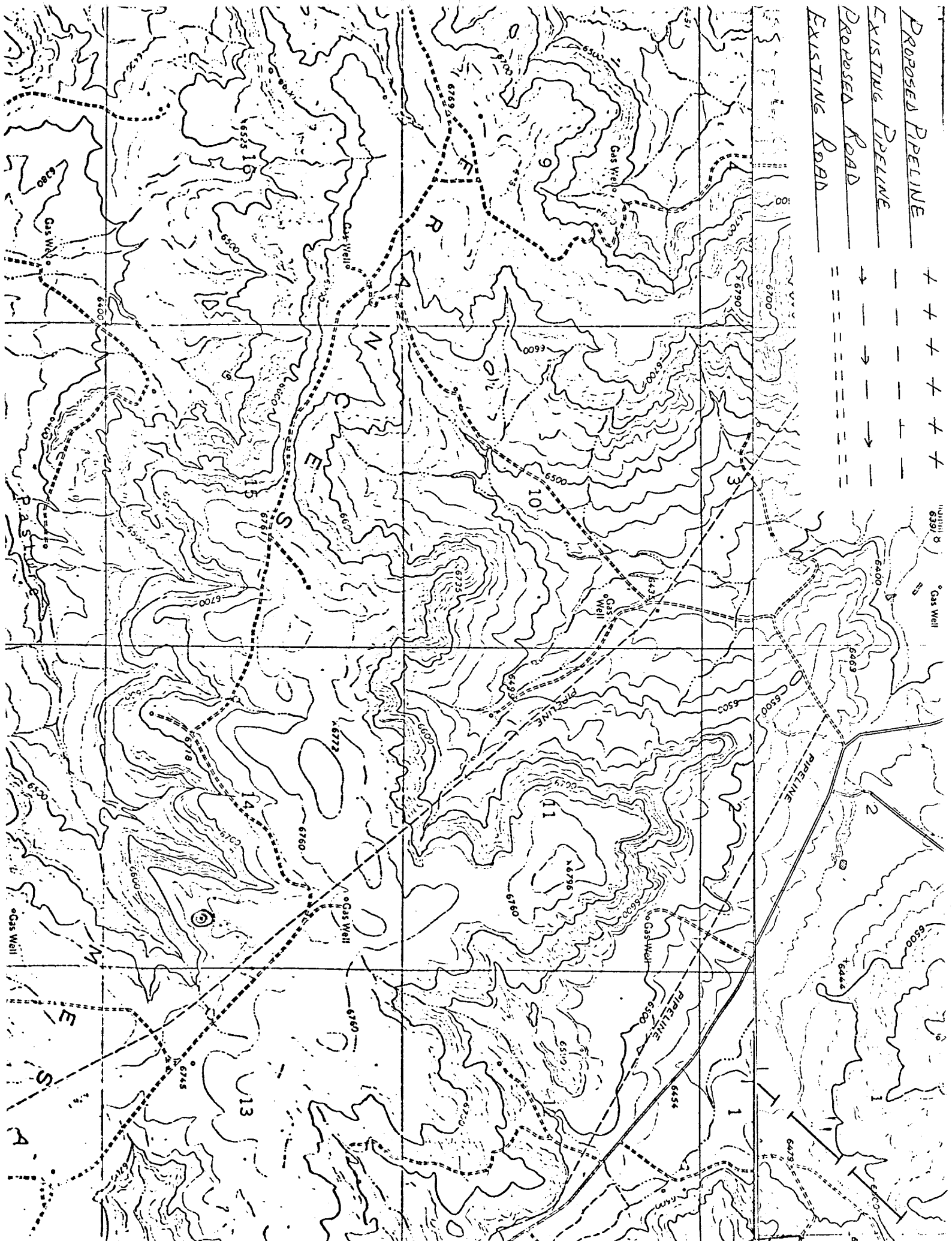


Gas Well

↓
—
↓
—
↓

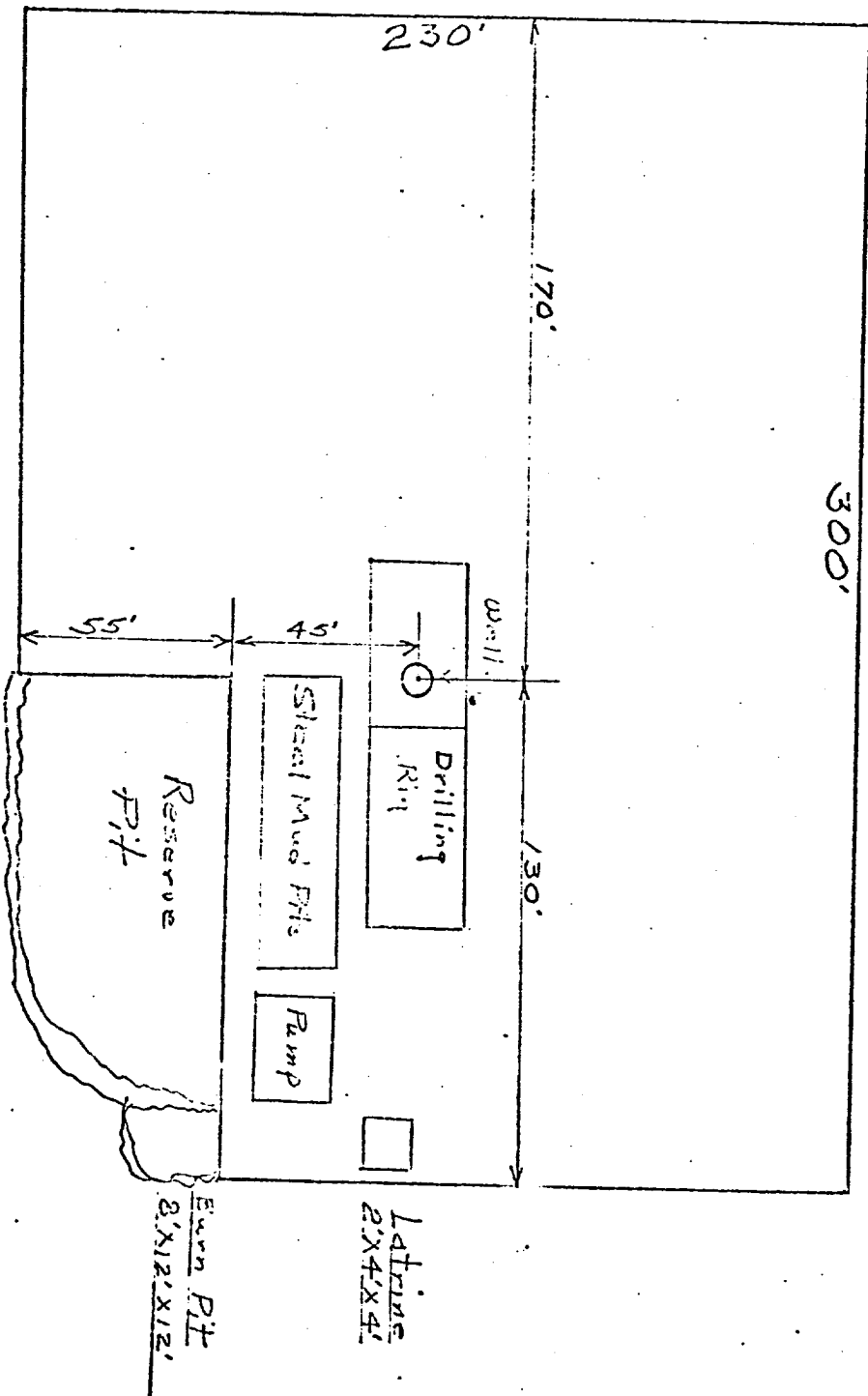
11
12
13
14
15
16
17
18
19

...



LOCATION AND EQUIPMENT LAYOUT

SAN JUAN 29-16 #34A



Northwest Pipeline Corporation



PRODUCTION & DRILLING
P. O. BOX 90
FARMINGTON, NEW MEXICO 87401

August 4, 1975

United States Geological Survey
P. O. Box 1809
Durango, Colorado 81301

Re: Application for "Permit to Drill"
San Juan 29-6 Unit #34A
Sec. 14, T29N, R6W
Rio Arriba County, New Mexico

Gentlemen:

Information regarding existing roads, pipelines, flowlines, etc., relative to the above well location is included on the enclosed attachments.

Water for drilling and completion operations will be obtained from the San Juan 29-6 water well #1 located in the NW/4 SW/4 Sec. 28, T29N, R6W.

Waste disposal will be in the burn pit, latrine or reserve pit.

There will be no camp or airstrip associated with drilling this well.

Upon completion or abandonment of this well, the location will be cleaned, leveled, and a dry hole marker placed, if applicable.

Northwest Pipeline Corporation

D. H. Maroncelli

D. H. Maroncelli
Drilling Engineer

DHM/mag

xc: file



14