

UNITED STATES  
DEPARTMENT OF THE INTERIOR  
GEOLOGICAL SURVEY

30-039-21124

## APPLICATION FOR PERMIT TO DRILL, DEEPEN, OR PLUG BACK

## 1a. TYPE OF WORK

DRILL ☒DEEPEN ☐PLUG BACK ☐

## b. TYPE OF WELL

OIL  
WELL ☐GAS  
WELL ☒

OTHER

SINGLE  
ZONE ☒MULTIPLE  
ZONE ☐

## 2. NAME OF OPERATOR

Northwest Pipeline Corporation

## 3. ADDRESS OF OPERATOR

P. O. Box 90 Farmington, New Mexico

## 4. LOCATION OF WELL (Report location clearly and in accordance with any State regulations.)

At surface

790' FEL &amp; 1125' FSL

At proposed prod. zone

As above

## 14. DISTANCE IN MILES AND DIRECTION FROM NEAREST TOWN OR POST OFFICE\*

## 15. DISTANCE FROM PROPOSED\*

LOCATION TO NEAREST  
PROPERTY OR LEASE LINE, FT.  
(Also to nearest drlg. unit line, if any)18. DISTANCE FROM PROPOSED LOCATION\*  
TO NEAREST WELL, DRILLING, COMPLETED,  
OR APPLIED FOR, ON THIS LEASE, FT.

## 16. NO. OF ACRES IN LEASE

## 19. PROPOSED DEPTH

5841'

17. NO. OF ACRES ASSIGNED  
TO THIS WELL

## 20. ROTARY OR CABLE TOOLS

Rotary

## 21. ELEVATIONS (Show whether DF, RT, GR, etc.)

6409' GR

## 22. APPROX. DATE WORK WILL START\*

November 1, 1975

## 23.

## PROPOSED CASING AND CEMENTING PROGRAM

SIZE OF HOLE	SIZE OF CASING	WEIGHT PER FOOT	SETTING DEPTH	QUANTITY OF CEMENT
13-3/4	9-5/8	36	200	180 sx
8-3/4	7	20	3710	165 sx
6-1/4	4-1/2 liner	10.5	5841	215 sx

Selectively perforate and stimulate the Mesa Verde formation.

A BOP will be installed when the 9-5/8" surface casing is run and cemented.  
All subsequent work will be conducted through the BOP.

The east half of Section 3 is dedicated to this well.

IN ABOVE SPACE DESCRIBE PROPOSED PROGRAM: If proposal is to deepen or plug back, give data on present productive zone and proposed new productive zone. If proposal is to drill or deepen directionally, give pertinent data on subsurface locations and measured and true vertical depths. Give blowout preventer program, if any.

## 24.

SIGNED

*O. B. Whitenburg*  
O. B. Whitenburg

TITLE

Sr. Prod. &amp; Drlg. Engr.

DATE

July 25, 1975

(This space for Federal or State office use)

PERMIT NO.

APPROVAL DATE

APPROVED BY

TITLE

DATE

CONDITIONS OF APPROVAL, IF ANY:

*OK*

NEW MEXICO OIL CONSERVATION COMMISSION  
WELL LOCATION AND ACREAGE DEDICATION PLAT

Form C-102  
Supersedes C-128  
Effective 1-1-65

All distances must be from the outer boundaries of the Section.

Operator <b>Northwest Pipeline Corporation</b>		Lease <b>San Juan 29-6 Unit</b>		Well No. <b>1A</b>
Unit Letter <b>P</b>	Section <b>3</b>	Township <b>29N</b>	Range <b>6W</b>	County <b>Rio Arriba</b>
Actual Footage Location of Well:				
<b>1125'</b> feet from the <b>South</b> line and		<b>790'</b> feet from the <b>East</b> line		
Ground Level Elev. <b>6409</b>	Producing Formation <b>Mesa Verde</b>	Pool <b>Blanco Mesa Verde</b>	Dedicated Acreage: <b>318.72</b> Acres	

1. Outline the acreage dedicated to the subject well by colored pencil or hatchure marks on the plat below.
2. If more than one lease is dedicated to the well, outline each and identify the ownership thereof (both as to working interest and royalty).
3. If more than one lease of different ownership is dedicated to the well, have the interests of all owners consolidated by communitization, unitization, force-pooling, etc?

☐ Yes ☒ No If answer is "yes," type of consolidation \_\_\_\_\_

If answer is "no," list the owners and tract descriptions which have actually been consolidated. (Use reverse side of this form if necessary.) SE 1/4 SE 1/4 Section 3, T29N, R6W

No allowable will be assigned to the well until all interests have been consolidated (by communitization, unitization, forced-pooling, or otherwise) or until a non-standard unit, eliminating such interests, has been approved by the Commission.

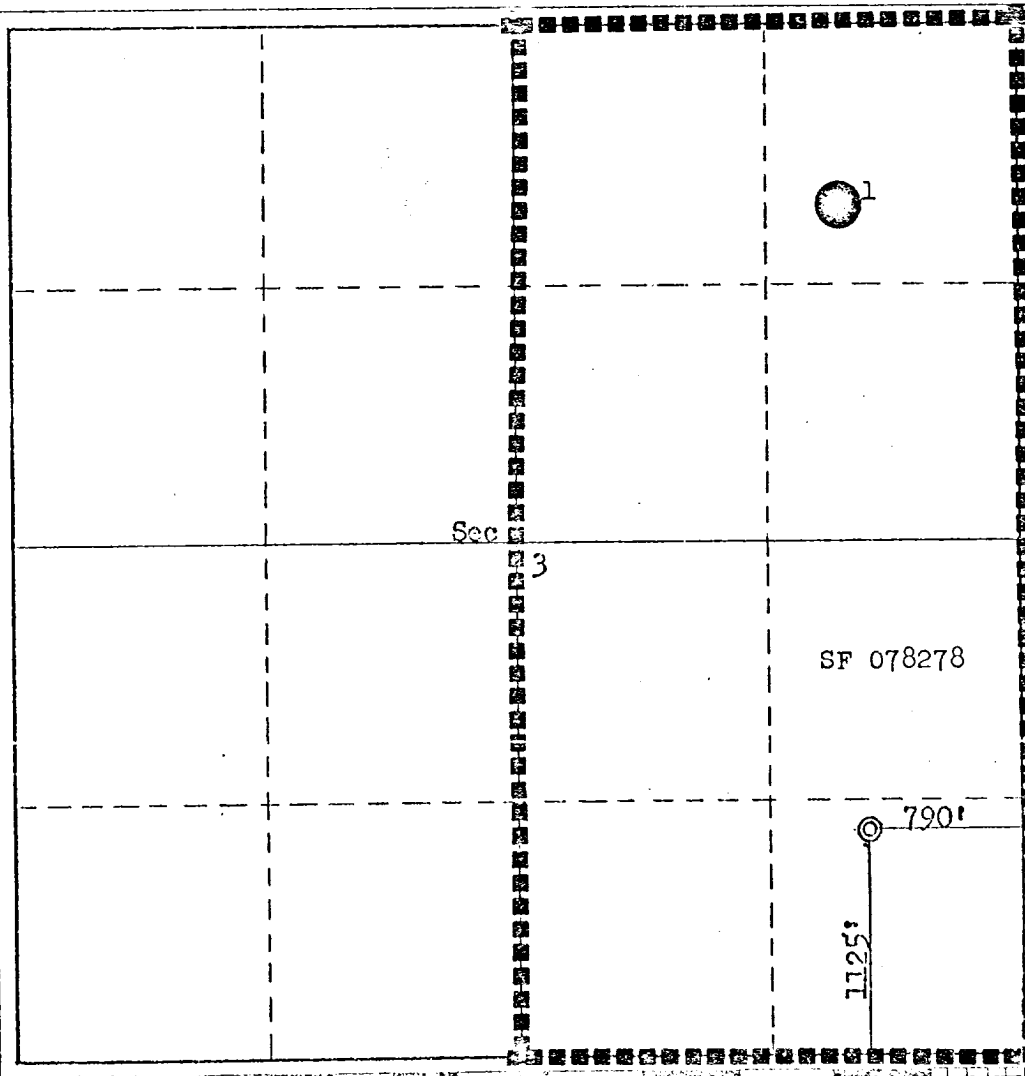
CERTIFICATION

I hereby certify that the information contained herein is true and complete to the best of my knowledge and belief.

*O. B. Whitenburg*  
Name  
**O. B. Whitenburg**  
Position  
**Sr. Prod. & Drlg. Engr.**  
Company  
**Northwest Pipeline Corp.**  
Date  
**July 25, 1975**

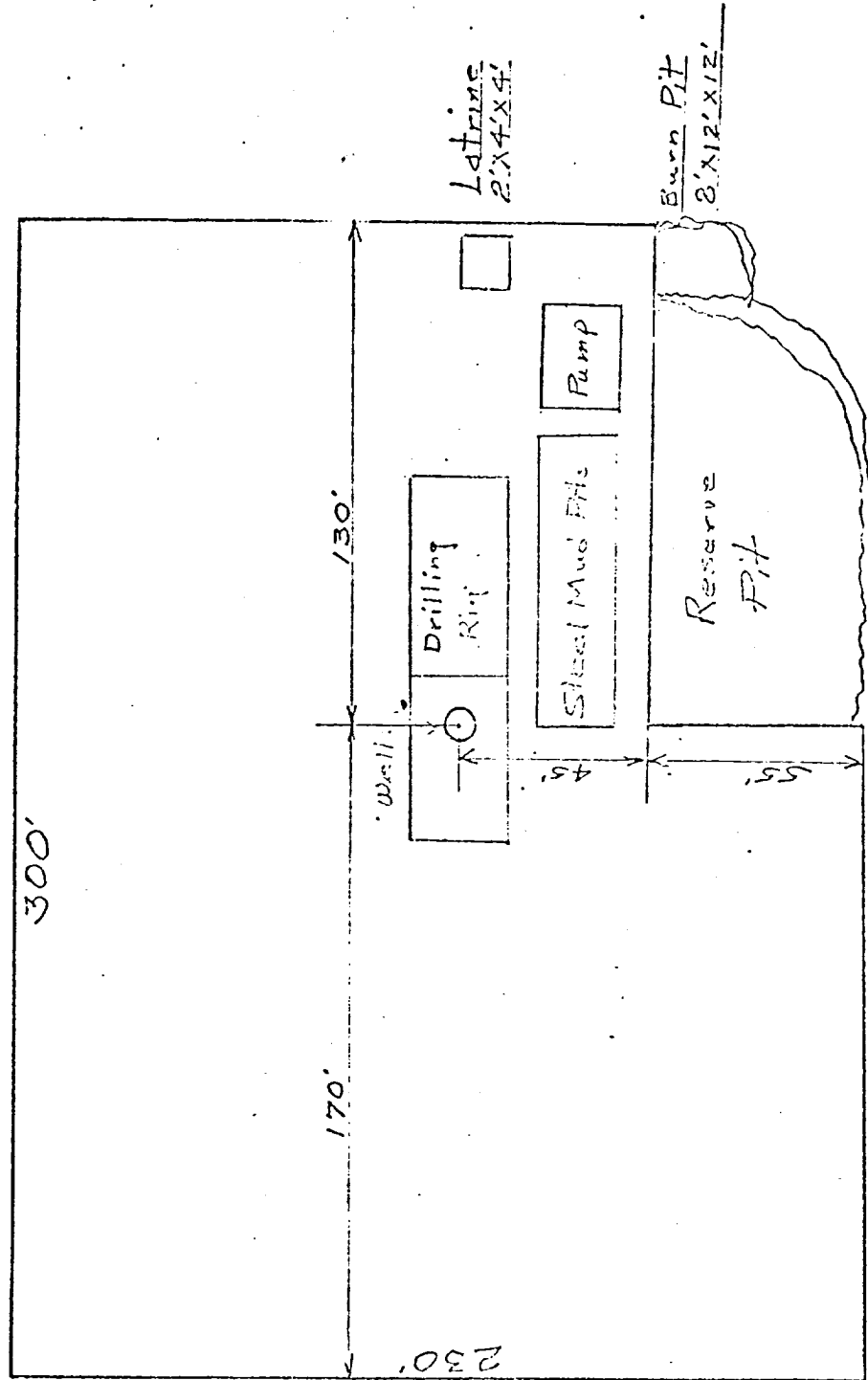
I hereby certify that the well location shown on this plat was plotted from field notes of actual surveys made by me or under my supervision, and that the same is true and correct to the best of my knowledge and belief.

Date Surveyed  
**April 19, 1975**  
Registered Professional Engineer  
(and/or Land Surveyor)  
*Frank R. Kent Jr.*  
**Frank R. Kent Jr.**  
Certification No. \_\_\_\_\_

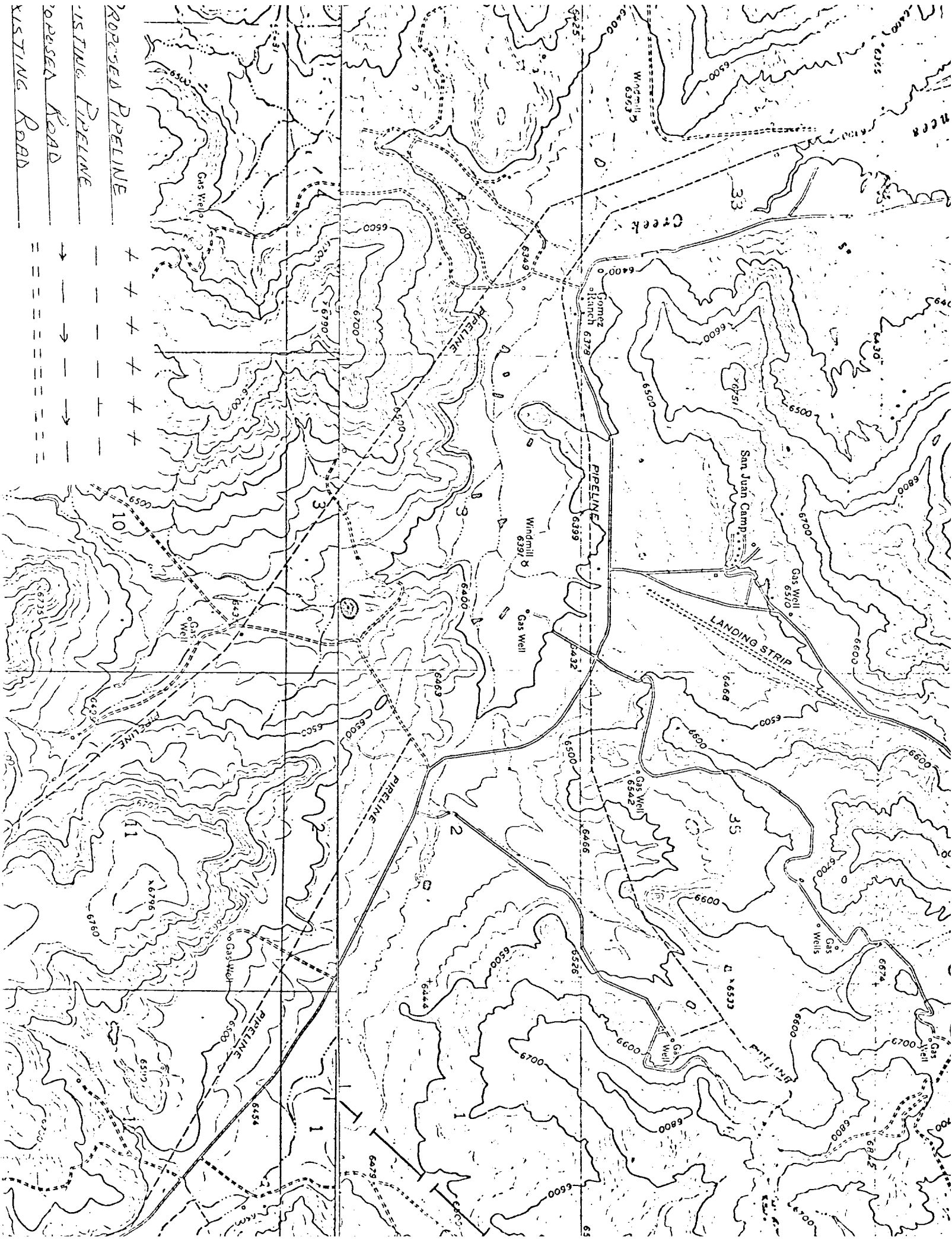


LOCATION AND EQUIPMENT LAYOUT

SAN JUAN 29-6 #1A



ROPERED PIPELINE  
+ + + + +  
EXISTING PIPELINE  
- - - - -  
ROPERED ROAD  
→ → → → →  
EXISTING ROAD  
= = = = =



Northwest Pipeline Corporation



PRODUCTION & DRILLING  
P. O. BOX 90  
FARMINGTON, NEW MEXICO 87401

August 4, 1975

United States Geological Survey  
P. O. Box 1809  
Durango, Colorado 81301

Re: Application for "Permit to Drill"  
San Juan 29-6 Unit #1A  
Sec. 3, T29N, R6W  
Rio Arriba County, New Mexico



Gentlemen:

Information regarding existing roads, pipelines, flowlines, etc., relative to the above well location is included on the enclosed attachments.

Water for drilling and completion operations will be obtained from the San Juan 29-6 water well #1 located in the NW/4 SW/4 Sec. 28, T29N, R6W.

Waste disposal will be in the burn pit, latrine or reserve pit.

There will be no camp or airstrip associated with drilling this well.

Upon completion or abandonment of this well, the location will be cleaned, leveled, and a dry hole marker placed, if applicable.

Northwest Pipeline Corporation

D. H. Maroncelli  
Drilling Engineer

DHM/mag

xc: File