

UNITED STATES  
DEPARTMENT OF THE INTERIORGEOLOGICAL SURVEY **APT 30-039-21249**

## APPLICATION FOR PERMIT TO DRILL, DEEPEN, OR PLUG BACK

## 1a. TYPE OF WORK

DRILL ☒DEEPEN ☐PLUG BACK ☐

## b. TYPE OF WELL

OIL  
WELL ☐GAS  
WELL ☒

OTHER

SINGLE  
ZONE ☒MULTIPLE  
ZONE ☐

## 2. NAME OF OPERATOR

Northwest Pipeline Corporation

## 3. ADDRESS OF OPERATOR

P.O. Box 90 Farmington, New Mexico 87401

## 4. LOCATION OF WELL (Report location clearly and in accordance with any State requirements.)\*

At surface

820' FNL &amp; 820' FWL

At proposed prod. zone

As above

## 14. DISTANCE IN MILES AND DIRECTION FROM NEAREST TOWN OR POST OFFICE\*

## 5. LEASE DESIGNATION AND SERIAL NO.

SF 078426-A

## 6. IF INDIAN, ALLOTTEE OR TRIBE NAME

## 7. UNIT AGREEMENT NAME

San Juan 29-6 Unit

## 8. FARM OR LEASE NAME

San Juan 29-6 Unit

## 9. WELL NO.

73A

## 10. FIELD AND POOL, OR WILDCAT

Blanco Mesa Verde

11. SEC., T., R., M., OR BLK.  
AND SURVEY OR AREA

Sec. 20, T29N, R6W

## 12. COUNTY OR PARISH

## 13. STATE

Rio Arriba

N. Mexico

## 15. DISTANCE FROM PROPOSED\*

LOCATION TO NEAREST  
PROPERTY OR LEASE LINE, FT.  
(Also to nearest drlg. unit line, if any)

## 16. NO. OF ACRES IN LEASE

17. NO. OF ACRES ASSIGNED  
TO THIS WELL

W/ 320

18. DISTANCE FROM PROPOSED LOCATION\*  
TO NEAREST WELL, DRILLING, COMPLETED,  
OR APPLIED FOR, ON THIS LEASE, FT.

## 19. PROPOSED DEPTH

5705

## 20. ROTARY OR CABLE TOOLS

Rotary

## 21. ELEVATIONS (Show whether DF, RT, GR, etc.)

6394' GR

## 22. APPROX. DATE WORK WILL START\*

June 14, 1976

## 23.

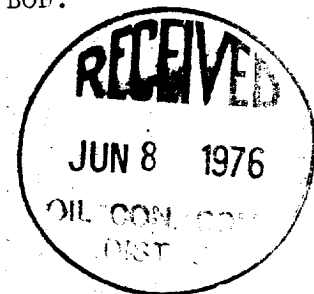
## PROPOSED CASING AND CEMENTING PROGRAM

SIZE OF HOLE	SIZE OF CASING	WEIGHT PER FOOT	SETTING DEPTH	QUANTITY OF CEMENT
13 3/4"	9 5/8"	36	200'	180 sxs
8 3/4"	7"	20	3643'	160 sxs
6 1/4"	4 1/2" Liner	10.5	3493'-5705'	215 sxs

Selectively perforate and stimulate the Mesa Verde formation.

A BOP will be installed after the 9 5/8" surface casing has been run and cemented. All subsequent work will be conducted through the BOP.

The W/2 of Section 20 is dedicated to this well.



*Gas is dedicated*

IN ABOVE SPACE DESCRIBE PROPOSED PROGRAM: If proposal is to deepen or plug back, give data on present productive zone and proposed new productive zone. If proposal is to drill or deepen directionally, give pertinent data on subsurface locations and measured and true vertical depths. Give blowout preventer program, if any.

## 24.

SIGNED

*D. H. Maroncelli*  
D. H. Maroncelli

TITLE

Production Engineer

DATE

June 1, 1976

(This space for Federal or State office use)

PERMIT NO.

APPROVAL DATE

APPROVED BY

TITLE

DATE

CONDITIONS OF APPROVAL, IF ANY:

*OK*

\*See Instructions On Reverse Side

NEW MEXICO OIL CONSERVATION COMMISSION  
WELL LOCATION AND ACREAGE DEDICATION PLAT

Form C-102  
Supersedes C-128  
Effective 1-1-65

All distances must be from the outer boundaries of the Section.

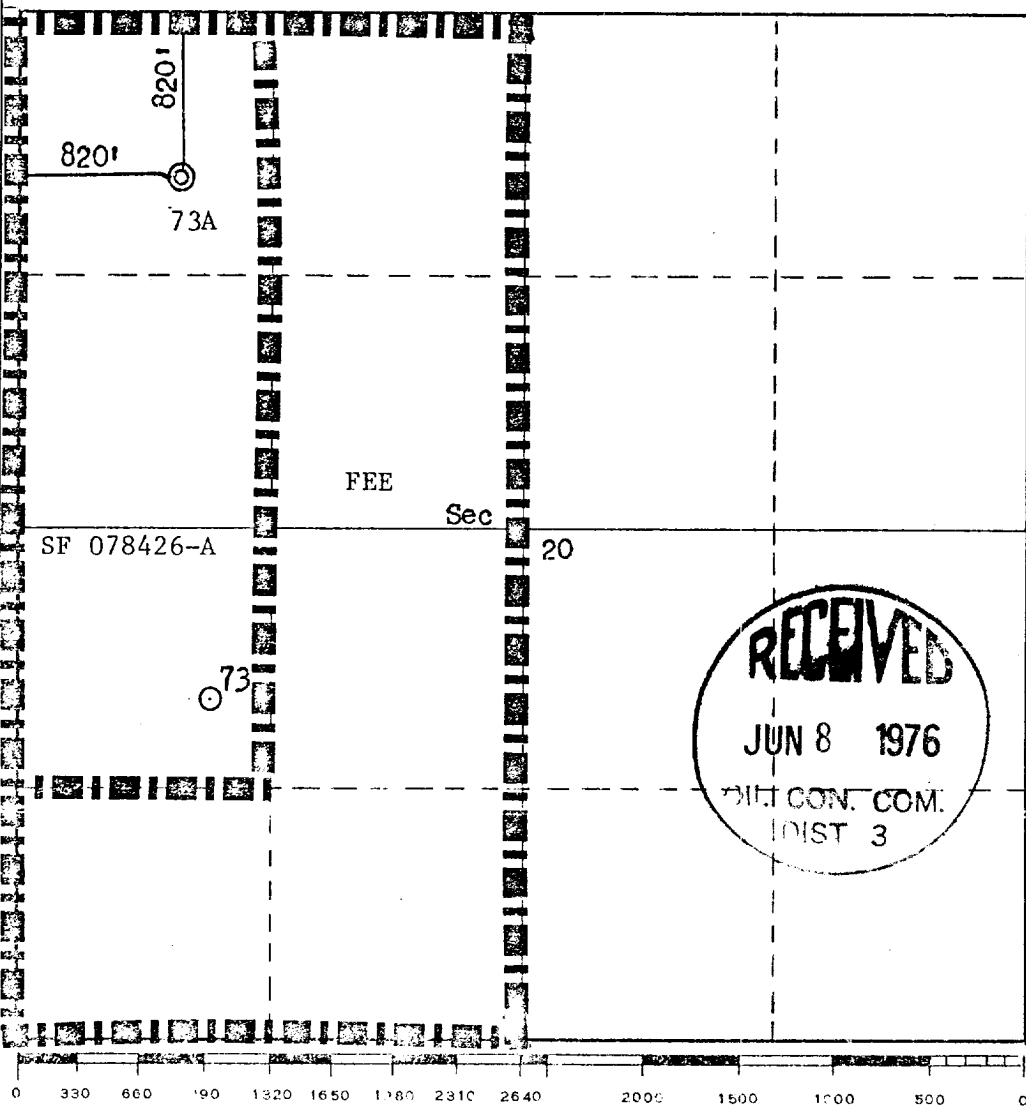
Operator <b>Northwest Pipeline Corporation</b>			Lease <b>San Juan 29-6 Unit</b>		Well No. <b>73A</b>
Unit Letter <b>D</b>	Section <b>20</b>	Township <b>29N.</b>	Range <b>6W</b>	County <b>Rio Arriba</b>	
Actual Footage Location of Well: <b>820</b> feet from the <b>North</b> line and <b>820</b> feet from the <b>West</b> line					
Ground Level Elev. <b>6394</b>	Producing Formation <b>Mesa Verde</b>		Pool <b>Blanco</b>	Dedicated Acreage: <b>320</b> Acres	

1. Outline the acreage dedicated to the subject well by colored pencil or hachure marks on the plat below.
2. If more than one lease is dedicated to the well, outline each and identify the ownership thereof (both as to working interest and royalty).
3. If more than one lease of different ownership is dedicated to the well, have the interests of all owners been consolidated by communitization, unitization, force-pooling, etc?

☐ Yes ☐ No If answer is "yes," type of consolidation \_\_\_\_\_

If answer is "no," list the owners and tract descriptions which have actually been consolidated. (Use reverse side of this form if necessary.) \_\_\_\_\_

No allowable will be assigned to the well until all interests have been consolidated (by communitization, unitization, forced-pooling, or otherwise) or until a non-standard unit, eliminating such interests, has been approved by the Commission.



CERTIFICATION

I hereby certify that the information contained herein is true and complete to the best of my knowledge and belief.

*D. H. Maroncelli*  
Name

D.H. Maroncelli

Position

Production Engineer

Company

Northwest Pipeline Corp.

Date

May 17, 1976

I hereby certify that the well location shown on this plat was plotted from field notes of actual surveys made by me or under my supervision, and that the same is true and correct to the best of my knowledge and belief.

Date Surveyed

May 11, 1976

Registered Professional Engineer and/or Land Surveyor

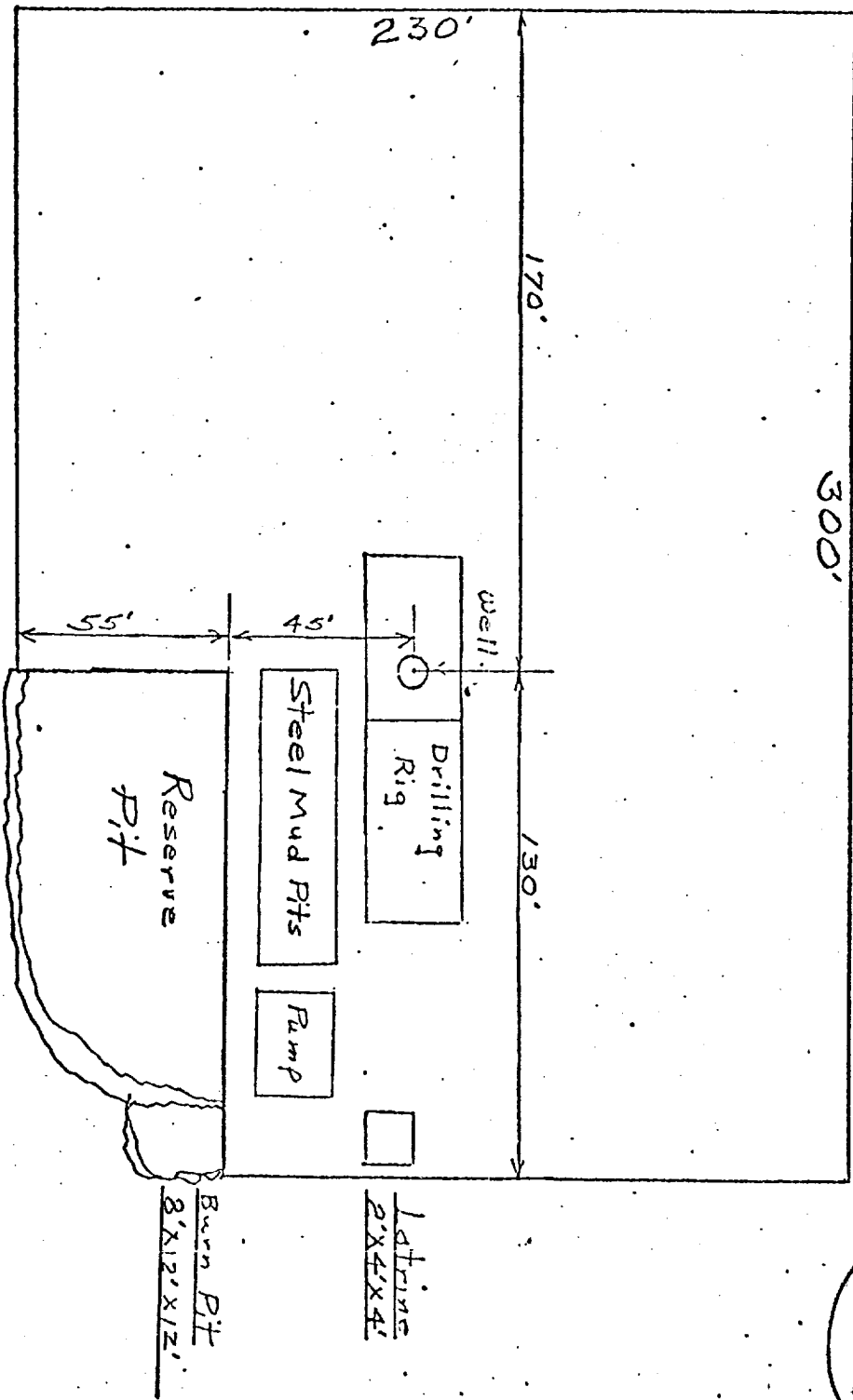
*Fred B. Kerr, Jr.*  
Fred B. Kerr, Jr.

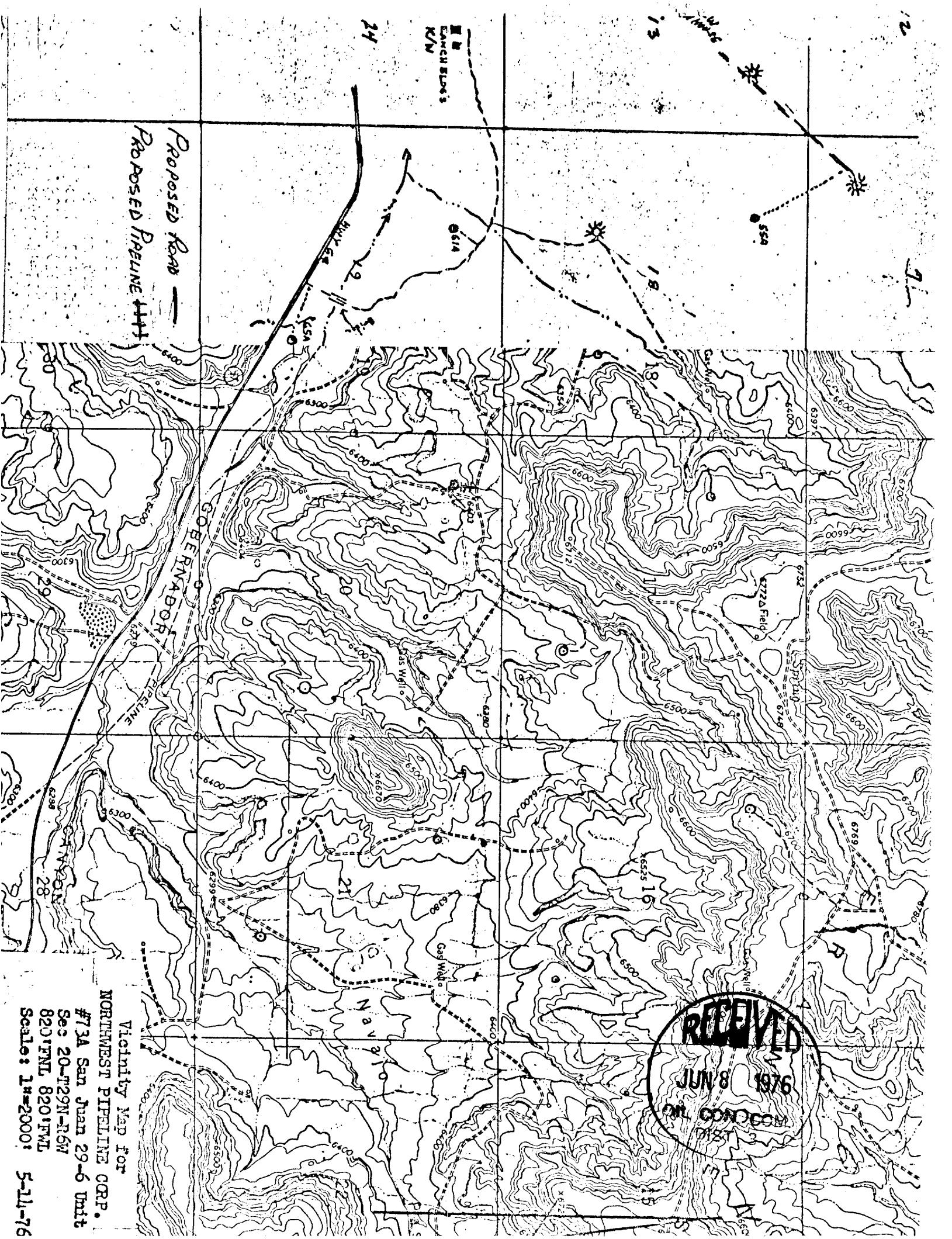
Certificate No.

3950

LOCATION AND EQUIPMENT LAYOUT

SAN JUAN 29-6 UNIT #73A





Proposed Road —  
Proposed Pipeline ———

LANCH BLUES  
K/N

GOVERNADOR

Navy

Gas Well

2722 Field

RECEIVED  
JUN 8 1976  
ON CONCOM  
DIST 3

Vicinity Map for  
NORTHWEST PIPELINE CORP.

#73A San Juan 29-6 Unit  
Sec 20-T29N-R6W  
820'FNL 820'FWL  
Scale: 1"=2000' 5-11-76

Northwest Pipeline Corporation



PRODUCTION & DRILLING  
P. O. BOX 90  
FARMINGTON, NEW MEXICO 87401  
5113-28-76

May 20, 1976

United States Geological Survey  
P.O. Box 1809  
Durango, Colorado 81301

Re: Application for "Permit to Drill"  
San Juan 29-6 Unit #73A  
NW/4 Sec. 20, T29N, R6W  
Rio Arriba County, New Mexico

Gentlemen:

Information regarding existing roads, pipelines, flowlines, etc., relative to the above well location are included on the enclosed attachments.

Water for drilling and completion operations will be obtained from the San Juan 29-6 Water Well #1, located in the NW/4 SW/4 Sec. 28, T29N, R6W.

Waste disposal will be in the burn pit, toilet, or reserve pit. There will be no camp or airstrip associated with drilling this well. Upon completion or abandonment of this well the location will be cleaned, leveled, and a dry hole marker placed if applicable.

Sincerely,

D. H. Maroncelli  
Production Engineer  
Northwest Pipeline Corporation

DH:rn

