

UNITED STATES  
DEPARTMENT OF THE INTERIOR  
GEOLOGICAL SURVEY30 039-23033  
5. LEASE DESIGNATION AND SERIAL NO.

SF 078917

6. IF INDIAN, ALLOTTEE OR TRIBE NAME

7. UNIT AGREEMENT NAME

San Juan 29-5 Unit

8. FARM OR LEASE NAME

San Juan 29-5 Unit

9. WELL NO.

#106

10. FIELD AND POOL, OR WILDCAT

Blanco Mesa Verde

11. SEC., T., R., M., OR BLK.  
AND SURVEY OR AREA

K Sec 25, T29N, R5W

12. COUNTY OR PARISH

Rio Arriba

13. STATE  
New Mexico

## APPLICATION FOR PERMIT TO DRILL, DEEPEN, OR PLUG BACK

1a. TYPE OF WORK

DRILL ☒DEEPEN ☐PLUG BACK ☐

b. TYPE OF WELL

OIL  
WELL ☐GAS  
WELL ☒

OTHER

SINGLE  
ZONE ☒MULTIPLE  
ZONE ☐

2. NAME OF OPERATOR

Northwest Pipeline Corporation

3. ADDRESS OF OPERATOR

P.O. Box 90, Farmington, New Mexico 87401

4. LOCATION OF WELL (Report location clearly and in accordance with any State requirements.)

At surface

1450 FWL &amp; 1950 FSL NE/SW

At proposed prod. zone

1450 FWL &amp; 1950 FSL NE/SW

14. DISTANCE IN MILES AND DIRECTION FROM NEAREST TOWN OR POST OFFICE\*

35 miles East of Blanco, New Mexico

15. DISTANCE FROM PROPOSED\*

LOCATION TO NEAREST

PROPERTY OR LEASE LINE, FT.

(Also to nearest drig. unit line, if any)

130'

18. DISTANCE FROM PROPOSED LOCATION\*  
TO NEAREST WELL, DRILLING, COMPLETED,  
OR APPLIED FOR, ON THIS LEASE, FT.

2200'

16. NO. OF ACRES IN LEASE

N/A

17. NO. OF ACRES ASSIGNED

TO THIS WELL

W 320

19. PROPOSED DEPTH

6250'

20. ROTARY OR CABLE TOOLS

Rotary

21. ELEVATIONS (Show whether DF, RT, GR, etc.)

6855' GR

22. APPROX. DATE WORK WILL START\*

July 1981

23.

## PROPOSED CASING AND CEMENTING PROGRAM

SIZE OF HOLE	SIZE OF CASING	WEIGHT PER FOOT	SETTING DEPTH	QUANTITY OF CEMENT
12-1/4"	9-5/8"	36#	200'	125 cu.ft
8-3/4"	7"	20#	4170'	300 cu.ft
6-1/4"	4-1/2"	10.5#	6250'	400 cu.ft

Selectively perforate and stimulate the Mesa Verde formation.  
Completion plans will be determined at Total Depth.

A BOP will be installed after the surface casing is set and cemented. All subsequent work will be conducted through the BOP's.

The West half of Section 25 is dedicated to this well.

Gas is dedicated.

IN ABOVE SPACE DESCRIBE PROPOSED PROGRAM: If proposal is to deepen or plug back, give data on present productive zone and proposed new productive zone. If proposal is to drill or deepen directionally, give pertinent data on subsurface locations and measured and true vertical depths. Give blowout prevention program, if any.

24.

SIGNED

*Paul C. Thompson*TITLE Drilling EngineerDATE April 12, 1982Paul C. Thompson  
(This space for Federal or State office use)

PERMIT NO. \_\_\_\_\_

APPROVAL DATE \_\_\_\_\_

APPROVED BY \_\_\_\_\_

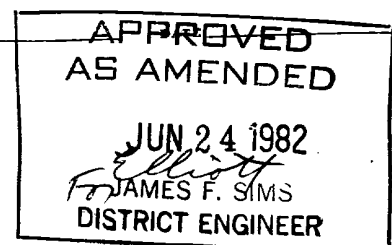
TITLE \_\_\_\_\_

CONDITIONS OF APPROVAL, IF ANY:

PCT:djb 4-12-82

\*See Instructions On Reverse Side

NMOC



## OIL CONSERVATION DIVISION

P. O. BOX 2088

STATE OF NEW MEXICO  
ENERGY AND MINERALS DEPARTMENT

SANTA FE, NEW MEXICO 87501

Form C-102  
Revised 10-1-78

All distances must be from the outer boundaries of the Section.

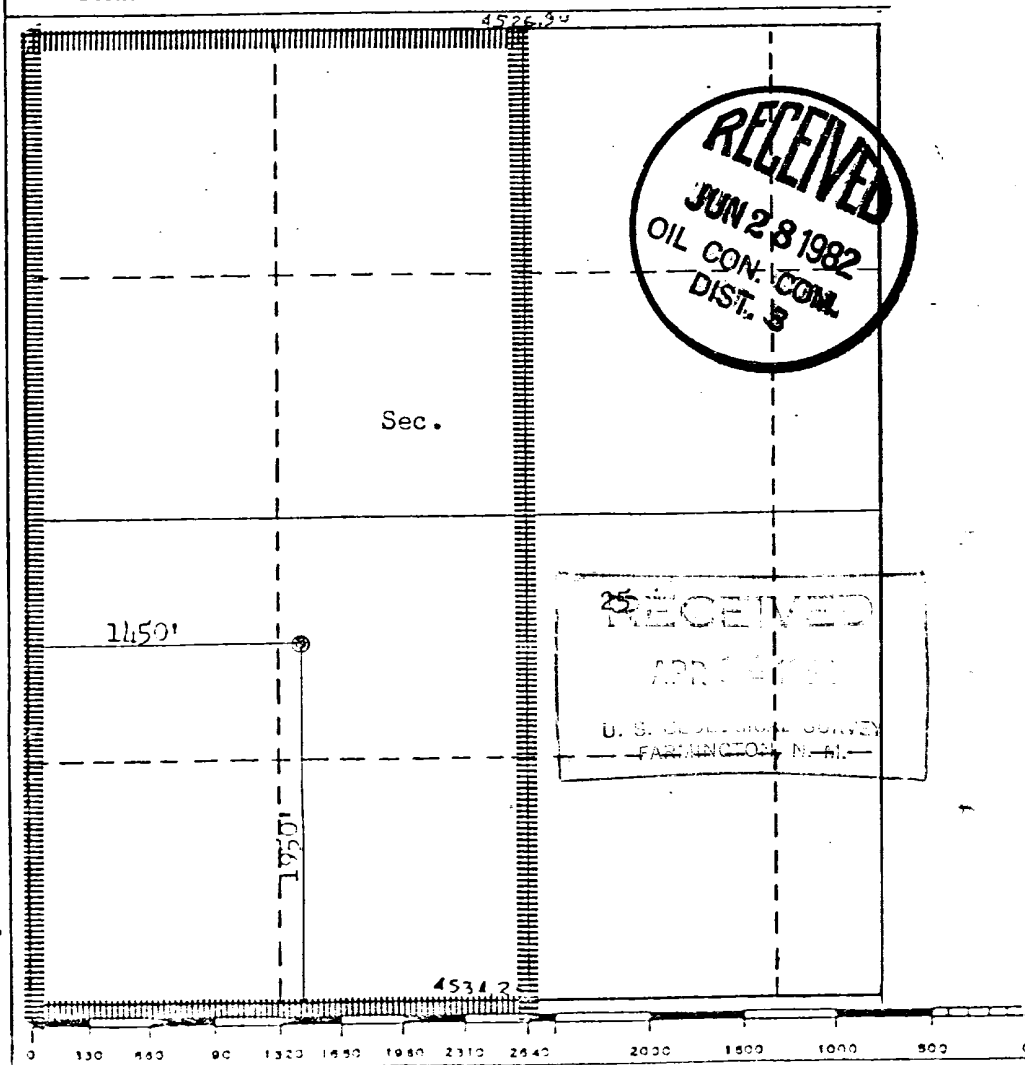
Operator NORTHWEST PIPELINE CORPORATION			Lease SAN JUAN 29-5 UNIT		Well No. 106
Unit Letter K	Section 25	Township 29N	Range 5W	County Rio Arriba	
Actual Footage Location of Well: 1950 feet from the South line and 1450 feet from the West line					
Ground Level Elev. 6855	Producing Formation Mesa Verde		Pool Blanco Mesa Verde		Dedicated Acreage: W 320 MV Acres

1. Outline the acreage dedicated to the subject well by colored pencil or hatchure marks on the plat below.
2. If more than one lease is dedicated to the well, outline each and identify the ownership thereof (both as to working interest and royalty).
3. If more than one lease of different ownership is dedicated to the well, have the interests of all owners been consolidated by communitization, unitization, force-pooling, etc?

☒ Yes ☐ No If answer is "yes," type of consolidation Unitization

If answer is "no," list the owners and tract descriptions which have actually been consolidated. (Use reverse side of this form if necessary.)

No allowable will be assigned to the well until all interests have been consolidated (by communitization, unitization, forced-pooling, or otherwise) or until a non-standard unit, eliminating such interests, has been approved by the Commission.



## CERTIFICATION

I hereby certify that the information contained herein is true and complete to the best of my knowledge and belief.

*Paul C. Thompson*

Name

Paul C. Thompson

Position

Drilling Engineer

Company

Northwest Pipeline Corp

Date

April 5, 1982

I hereby certify that the well location shown on this plat was plotted from field notes of actual surveys made by me or under my supervision, and that the same is true and correct to the best of my knowledge and belief.

Date Surveyed

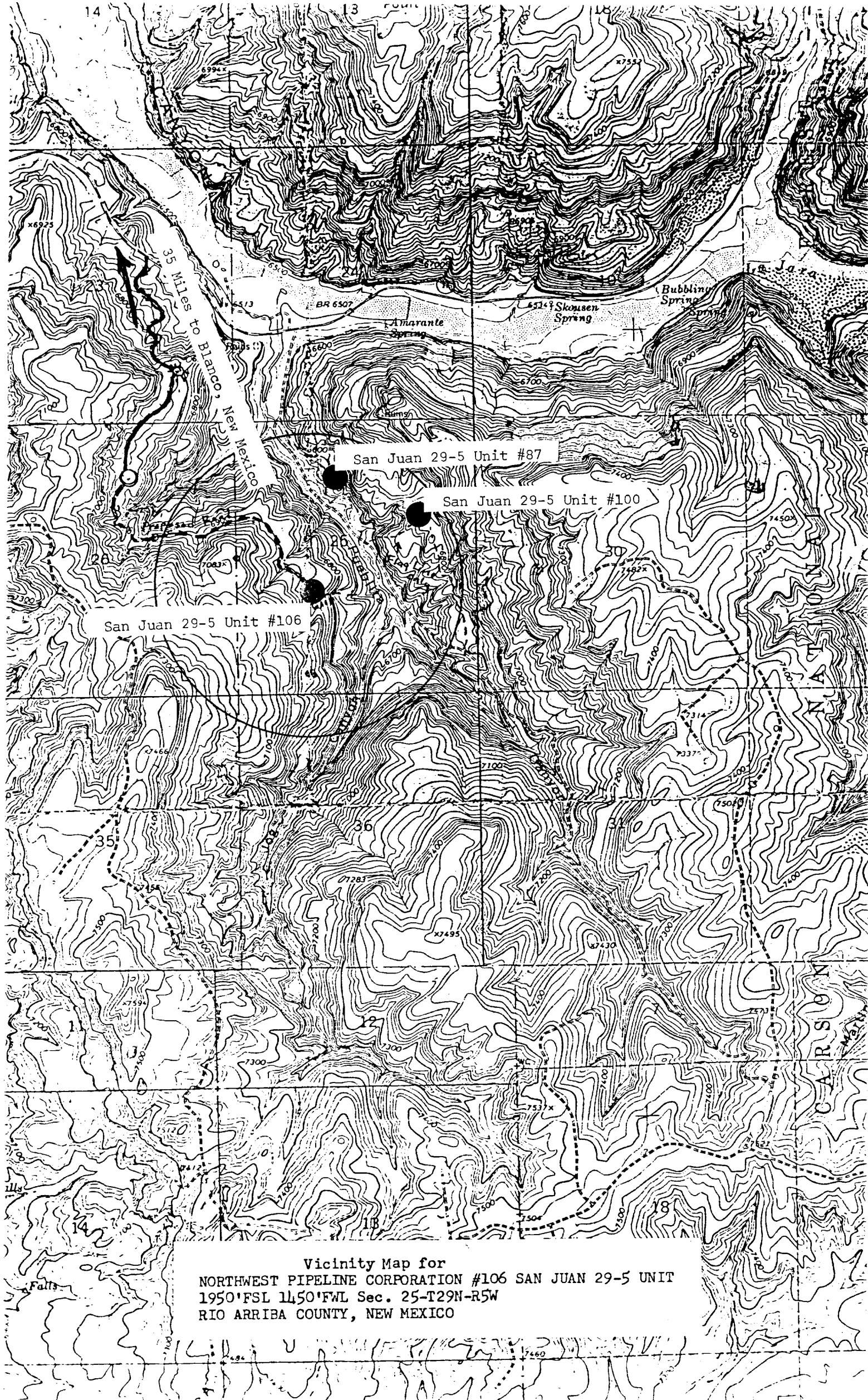
March 2, 1982

Registered Professional Engineer and/or Land Surveyor

*Fred B. Kerr Jr.*

Certificate No.

3950



Vicinity Map for  
NORTHWEST PIPELINE CORPORATION #106 SAN JUAN 29-5 UNIT  
1950'FSL 1450'FWL Sec. 25-T29N-R5W  
RIO ARRIBA COUNTY, NEW MEXICO