

UNITED STATES
DEPARTMENT OF THE INTERIOR
BUREAU OF LAND MANAGEMENT

APPLICATION FOR PERMIT TO DRILL, DEEPEN, OR PLUG BACK

1a. TYPE OF WORK
DRILL ☒ DEEPEN ☐ PLUG BACK ☐

b. TYPE OF WELL
OIL WELL ☐ GAS WELL ☒ OTHER ☐
SINGLE ZONE ☒ MULTIPLE ZONE ☐

2. NAME OF OPERATOR
Amoco Production Co.

3. ADDRESS OF OPERATOR
501 Airport Drive, Farmington, N M 87401

4. LOCATION OF WELL (Report location clearly and in accordance with any State requirements)
At surface
985' FSL x 1850' FWL
At proposed prod. zone Same

14. DISTANCE IN MILES AND DIRECTION FROM NEAREST TOWN OR POST OFFICE
56 miles N.E. of Bloomfield, New Mexico

10. DISTANCE FROM PROPOSED*
LOCATION TO NEAREST
PROPERTY OR LEASE LINE, FT.
(Also to nearest drlg. unit line, if any) 985'

16. NO. OF ACRES IN LEASE
2237.75

17. NO. OF ACRES ASSIGNED
TO THIS WELL 317.78

18. DISTANCE FROM PROPOSED LOCATION*
TO NEAREST WELL, DRILLING, COMPLETED,
OR APPLIED FOR, ON THIS LEASE, FT. 2800' N

19. PROPOSED DEPTH
9001'

20. ROTARY OR CABLE TOOL
Rotary

21. ELEVATIONS (Show whether DF, RT, GR, etc.)
7383' GR

DRILLING OPERATIONS AUTHORIZED ARE
SUBJECT TO COMPLIANCE WITH ATTACHED
"GENERAL REQUIREMENTS"

22. APPROX. DATE WORK WILL START*
As soon as permitted

23. PROPOSED CASING AND CEMENTING PROGRAM

SIZE OF HOLE	SIZE OF CASING	WEIGHT PER FOOT	SETTING DEPTH	QUANTITY OF CEMENT
12-1/4"	9-5/8"	32.3#, K-55	300'	354 c.f. Class B
8-3/4"	7"	23#, K-55	4500'	1000cf Class B 65:35:6 1.98cf/sk
6-1/4"	4-1/2"	11.5#, K-55	9001'	300cf Class B 1.18cf/sk
				300cf Class B 50:50:6 1.56cf/s
				250cf Class B 50:50:2 1.21cf/sk

Amoco proposes to drill the above well to further develop the Basin Dakota reservoir. The well will be drilled to the surface casing point using native mud. The well will then be drilled to 4500 with a low solids nondispersed mud system and then the well will be drilled to a TD with air or gas. Completion design will be based on open hole logs. Copy of all logs will be filed upon completion. Amoco's standard blowout prevention will be employed; see attached drawing for blowout preventer design. Upon completion the well site will be cleaned and the reserve pit filled and leveled. The gas from this well is dedicated to Northwest Pipeline Corporation.

This action is subject to technical and
procedural review pursuant to 43 CFR 3165.3
and appeal pursuant to 43 CFR 3165.4

IN ABOVE SPACE DESCRIBE PROPOSED PROGRAM: If proposal is to deepen or plug back, give data on present productive zone and proposed new productive zone. If proposal is to drill or deepen directionally, give pertinent data on subsurface locations and measured and true vertical depths. Give blowout preventer program, if any.

SIGNED BDS Shaw TITLE Adm. Supervisor DATE 6-21-85
(This space for Federal or State office use)

PERMIT NO. _____

APPROVED BY _____
CONDITIONS OF APPROVAL, IF ANY:

TITLE _____

RECEIVED
DEC 12 1985

APPROVED
AS AMENDED

DEC 10 1985

/s/ J. Stan McKee
M. MILLENBACH
AREA MANAGER

NMOC CON. DIV.
DIST. 3

*See Instructions On Reverse Side

NEW MEXICO OIL CONSERVATION COMMISSION
WELL LOCATION AND ACREAGE DEDICATION PLAT

Form C-102
Supersedes C-128
Effective 1-1-65

All distances must be from the outer boundaries of the Section.

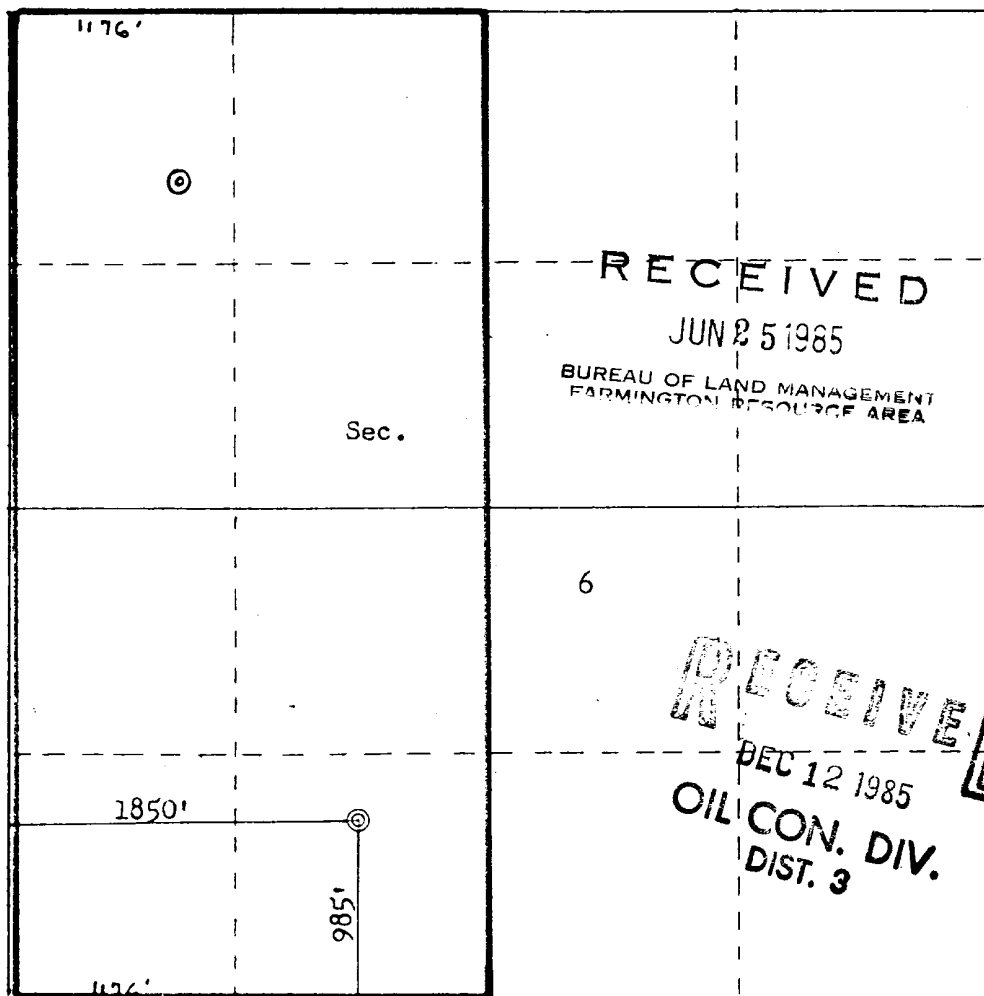
Operator AMOCO PRODUCTION COMPANY			Lease ROMERO-FEDERAL			Well No. 1E		
Unit Letter N	Section 6	Township 29N	Range 4W	County Rio Arriba				
Actual Footage Location of Well: 985 feet from the South line and 1850 feet from the West line								
Ground Level Elev. 7383	Producing Formation Dakota		Pool Basin Dakota			Dedicated Acreage: 317.78320 Acres		

1. Outline the acreage dedicated to the subject well by colored pencil or hatchure marks on the plat below.
2. If more than one lease is dedicated to the well, outline each and identify the ownership thereof (both as to working interest and royalty).
3. If more than one lease of different ownership is dedicated to the well, have the interests of all owners been consolidated by communitization, unitization, force-pooling, etc?

☐ Yes ☐ No If answer is "yes," type of consolidation _____

If answer is "no," list the owners and tract descriptions which have actually been consolidated. (Use reverse side of this form if necessary.) _____

No allowable will be assigned to the well until all interests have been consolidated (by communitization, unitization, forced-pooling, or otherwise) or until a non-standard unit, eliminating such interests, has been approved by the Commission.



Scale: 1"=1000'

CERTIFICATION

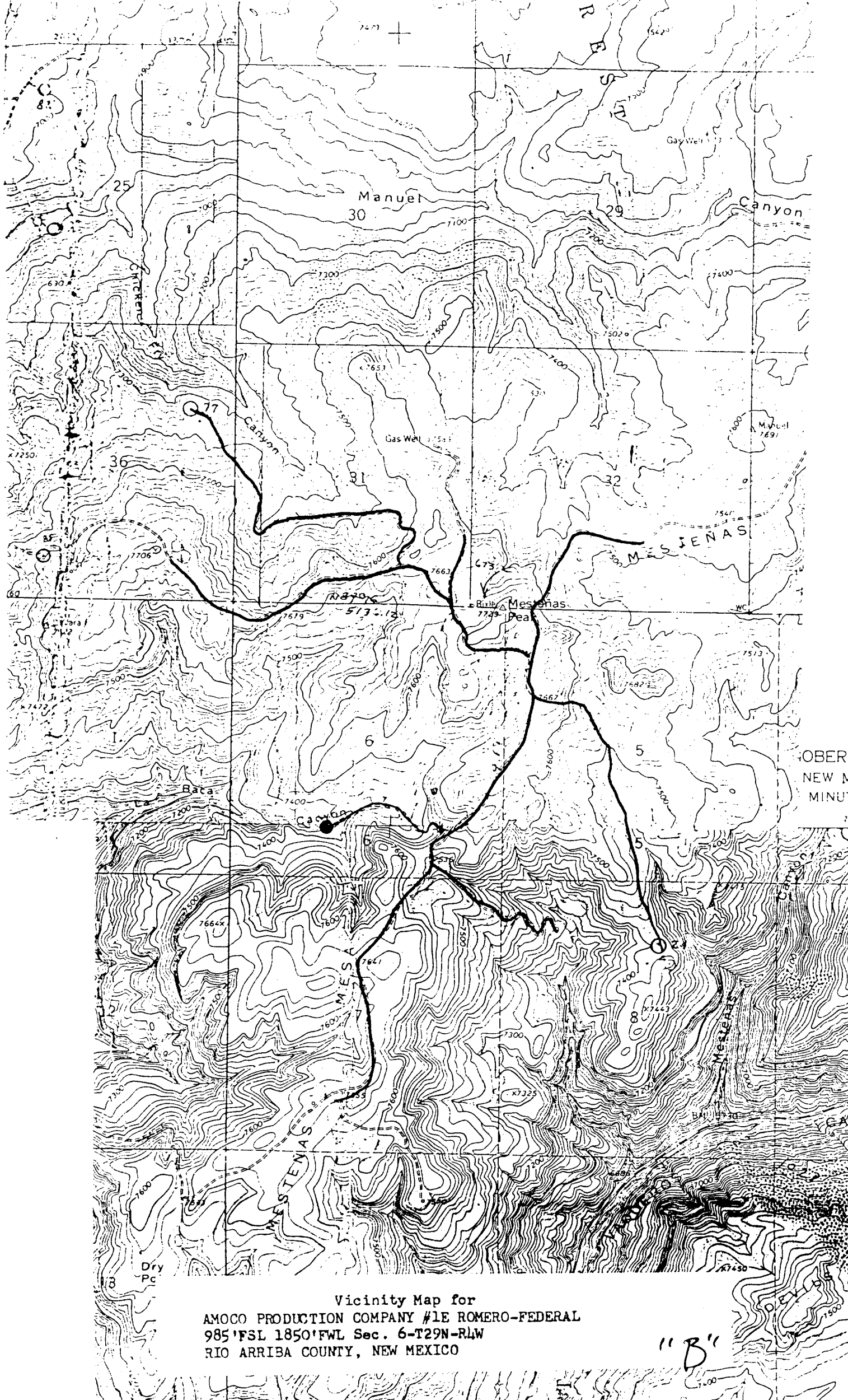
I hereby certify that the information contained herein is true and complete to the best of my knowledge and belief.

B. D. Shaw

Name
B. D. Shaw
Position
Adm. Supervisor
Company
Amoco Production Company
Date
6-21-85

I hereby certify that the well location shown on this plat was plotted from field notes of actual surveys made by me or under my supervision, and that the same is true and correct to the best of my knowledge and belief.

Date Surveyed
June 10, 1985
Registered Professional Engineer and Land Surveyor
Fred B. Kerr Jr.
Fred B. Kerr Jr.
Certificate No. 3950



Vicinity Map for
AMOCO PRODUCTION COMPANY #1E ROMERO-FEDERAL
985' FSL 1850' FWL Sec. 6-T29N-RLW
RIO ARRIBA COUNTY, NEW MEXICO

"B"

RECEIVED

AUG 12 1981

Romero Federal 1E

TD: 9001'

Surface: 350 ft³ Class "B" 2% CaCl₂
(cement top @ surface)

Production: Stage tool @ 4500'

1st Stage lead: 65:35:6 Class "B", 2#/sk tuffplug
10.9 gal/sk, 12 ppg, 1.98 cu. ft./sk
(400 cu. ft.) (top @ 4500')

1st Stage tail: 50:50:2 Class "B", 13.93 ppg
1.21 cu. ft./sk, 5.24 gal/sk, 2#/sk tuffplug
(360 cu. ft.) (top @ 8400')

2nd Stage: 65:35:6 Class "B", 10.9 gal/sk
12 ppg, 1.98 cu. ft./sk
(650 cu. ft.) (top @ surface)

Attachment I

$$\begin{array}{r}
 39.65 \\
 39.93 \\
 \hline
 79.18 \\
 39.44 \\
 \hline
 79.62 \\
 39.64 \\
 \hline
 118.26 \\
 39.96 \\
 \hline
 157.82 \\
 39.78 \\
 \hline
 197.60 \\
 12.60 \\
 \hline
 117.78 \\
 3
 \end{array}$$

39.65
39.53
39.44
39.34