

30-039-24516

NO. OF COPIES RECEIVED	
DISTRIBUTION	
SANTA FE	
FILE	
U.S.G.S.	
LAND OFFICE	
OPERATOR	

NEW MEXICO OIL CONSERVATION COMMISSION

Form C-101
Revised 1-1-65

5A. Indicate Type of Lease	
STATE <input checked="" type="checkbox"/>	FEE <input type="checkbox"/>
5. State Oil & Gas Lease No.	
NM E-289-45 & E-289-43	

APPLICATION FOR PERMIT TO DRILL, DEEPEN, OR PLUG BACK

1a. Type of Work		7. Unit Agreement Name	
DRILL <input checked="" type="checkbox"/> DEEPEN <input type="checkbox"/> PLUG BACK <input type="checkbox"/>		San Juan 29-6	
b. Type of Well		8. Farm or Lease Name	
OIL WELL <input type="checkbox"/> GAS WELL <input checked="" type="checkbox"/> OTHER <input type="checkbox"/> SINGLE ZONE <input type="checkbox"/> MULTIPLE ZONE <input type="checkbox"/>		San Juan 29-6	
2. Name of Operator		9. Well No.	
Northwest Pipeline Corporation		#207	
3. Address of Operator		10. Field and Pool, or Wildcat COAL	
3539 East 30th - Farmington, NM 87401		Basin Fruitland Pool	
4. Location of Well		12. County	
UNIT LETTER <u>K</u> LOCATED <u>1385</u> FEET FROM THE <u>South</u> LINE		Rio Arriba	
AND <u>1825</u> FEET FROM THE <u>West</u> LINE OF SEC. <u>2</u> TWP. <u>29N</u> RGE. <u>6W</u> NMPM			
		13. Proposed Depth	
		3342'	
		19A. Formation	
		Fruitland	
		20. Rotary or C.T.	
		Rotary	
21. Elevations (Show whether DF, RT, etc.)		22. Approx. Date Work will start	
6454' GR		8-20-89	

PROPOSED CASING AND CEMENT PROGRAM

SIZE OF HOLE	SIZE OF CASING	WEIGHT PER FOOT	SETTING DEPTH	SACKS OF CEMENT	EST. TOP
13-1/2"	9-5/8"	36# K-55	200'	164 sx	Circ. surface
8-3/4"	7"	20# K-55	3002'	76 sx	2300'
6-1/4"	5-1/2"	23# P110	2902'-3342'	none	

1) Plan to drill Fruitland formation from 3022' to 3342' and set 5-1/2" liner in open hole. Coal zones will be perforated.

2) The west half of Section 2 is dedicated to this well.

APPROVAL EXPIRES 2-4-90
UNLESS DRILLING IS COMMENCED.
SPUD LOGS MUST BE SUBMITTED
WITHIN 10 DAYS

RECEIVED
AUG 03 1989
OIL CON. DIV
DIST. 3

IN ABOVE SPACE DESCRIBE PROPOSED PROGRAM: IF PROPOSAL IS TO DEEPEN OR PLUG BACK, GIVE DATA ON PRESENT PRODUCTIVE ZONE AND PROPOSED NEW PRODUCTIVE ZONE. GIVE BLOWOUT PREVENTER PROGRAM, IF ANY.

I hereby certify that the information above is true and complete to the best of my knowledge and belief.

Signed Jeff Vaughan Title Prod. & Drilg. Engineer Date 8/1/89
(This space for State Use)

APPROVED BY Emie Busch TITLE DEPUTY OIL & GAS INSPECTOR, DIST. #3 DATE AUG 04 1989
CONDITIONS OF APPROVAL, IF ANY:

Submit to Appropriate
District Office
State Lease - 4 copies
Fee Lease - 3 copies

State of New Mexico
Energy, Minerals and Natural Resources Department

Form C-102
Revised 1-1-89

OIL CONSERVATION DIVISION

P.O. Box 2088
Santa Fe, New Mexico 87504-2088

NORTHWEST PIPELINE
CORPORATION

JUN 29 1989

DISTRICT I
P.O. Box 1980, Hobbs, NM 88240

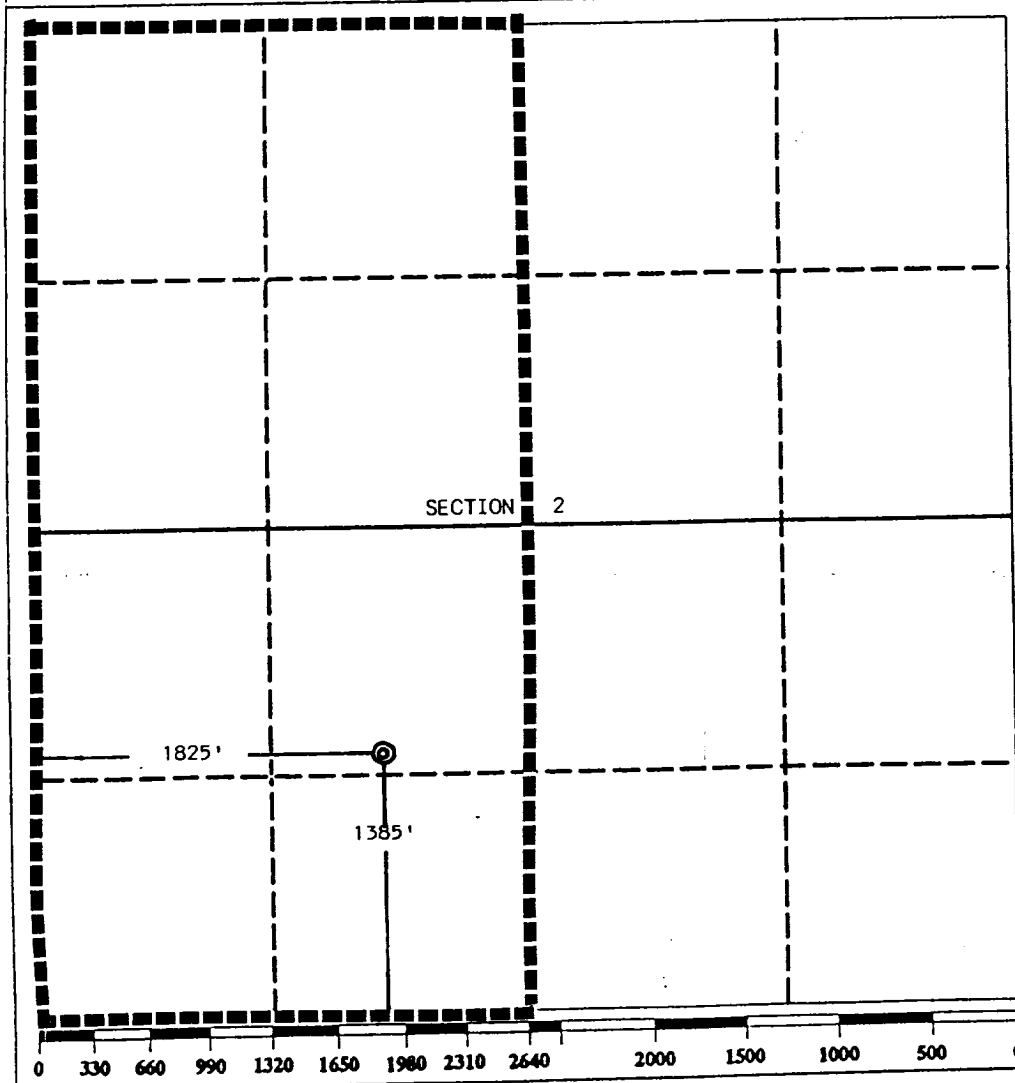
DISTRICT II
P.O. Drawer DD, Artesia, NM 88210

DISTRICT III
1000 Rio Brazos Rd., Aztec, NM 87410

WELL LOCATION AND ACREAGE DEDICATION ~~PLAT~~ PRODUCTION AND DRILLING
All Distances must be from the outer boundaries of the section

Operator Northwest Pipeline Corporation			Lease San Juan 29-6		Well No. 207
Unit Letter K	Section 2	Township 29 North	Range 6 West	County Rio arriba	
Actual Footage Location of Well: 1385 feet from the South line and 1825 feet from the West line					
Ground level Elev. 6454	Producing Formation Fruitland		Pool Basin Fruitland Pool	Dedicated Acreage: 319.13 Acres	

1. Outline the acreage dedicated to the subject well by colored pencil or hachure marks on the plat below.
2. If more than one lease is dedicated to the well, outline each and identify the ownership thereof (both as to working interest and royalty).
3. If more than one lease of different ownership is dedicated to the well, have the interest of all owners been consolidated by communitization, unitization, force-pooling, etc.?
☒ Yes ☐ No If answer is "yes" type of consolidation Unitization
If answer is "no" list the owners and tract descriptions which have actually been consolidated. (Use reverse side of this form if necessary.)
No allowable will be assigned to the well until all interests have been consolidated (by communitization, unitization, forced-pooling, or otherwise) or until a non-standard unit, eliminating such interest, has been approved by the Division.



OPERATOR CERTIFICATION

I hereby certify that the information contained herein is true and complete to the best of my knowledge and belief.

Signature Jeff Vaughan
Printed Name
Jeff Vaughan
Position
Engineer
Company
Northwest Pipeline Corp.
Date
July 10, 1989

SURVEYOR CERTIFICATION

I hereby certify that the well location shown on this plat was plotted from field notes of actual surveys made by me or under my supervision, and that the same is true and correct to the best of my knowledge and belief.

Date Surveyed
May 22, 1989
Signature & Seal of Professional Surveyor
Edgar
Certificate No. 5979
Edgar

[illegible]