

UNITED STATES
DEPARTMENT OF THE INTERIOR
BUREAU OF LAND MANAGEMENT

APPLICATION FOR PERMIT TO DRILL, DEEPEN, OR PLUG BACK

1a. TYPE OF WORK
DRILL ☒ DEEPEN ☐ PLUG BACK ☐

b. TYPE OF WELL
OIL WELL ☐ GAS WELL ☒ OTHER ☐ SINGLE ZONE ☐ MULTIPLE ZONE ☐

2. NAME OF OPERATOR
Northwest Pipeline Corporation

3. ADDRESS OF OPERATOR
3539 East 30th Street - Farmington, NM 87401

4. LOCATION OF WELL (Report location clearly and in accordance with any State requirements.*)
At surface 955' FNL & 1850' FEL NW/4 NE/4
At proposed prod. zone same

14. DISTANCE IN MILES AND DIRECTION FROM NEAREST TOWN OR POST OFFICE*
7 miles northeast of Gobernador, NM

15. DISTANCE FROM PROPOSED* LOCATION TO NEAREST PROPERTY OR LEASE LINE, FT. (Also to nearest drlg. unit line, if any) 955'

18. DISTANCE FROM PROPOSED LOCATION* TO NEAREST WELL, DRILLING, COMPLETED, OR APPLIED FOR, ON THIS LEASE, FT. 300'

21. ELEVATIONS (Show whether DF, RT, GR, etc.)
5669' GR DRILLING OPERATIONS AUTHORIZED ARE

23. SUBJECT TO COMPLIANCE WITH ATTACHED PROPOSED CASING AND CEMENTING PROGRAM

SIZE OF HOLE	SIZE OF CASING	WEIGHT PER FOOT	SETTING DEPTH
13-1/2"	9-5/8"	36# K-55	200'
3-3/4"	7"	20# K-55	3223'
5-1/4"	5-1/2"	23# P110	3123'-3625'

1) Plan to drill Fruitland Formation from 3223' to 3625' and complete open hole with a perforated liner in coal zones.

2) The East half of Section 6 is dedicated to this well.

RECEIVED

AUG 11 1989

Note: 7" casing will be cemented to 3123' CON. DIV. DIST. 3

IN ABOVE SPACE DESCRIBE PROPOSED PROGRAM: If proposal is to deepen or plug back, give data on present productive zone and proposed new productive zone. If proposal is to drill or deepen directionally, give pertinent data on subsurface locations and measured and true vertical depths. Give blowout prevention program, if any.

24. SIGNED J.R. Vaughan TITLE Prod. & Drlg. Engineer DATE 7-20-89
(This space for Federal or State office use)

PERMIT NO. _____ APPROVAL DATE _____

APPROVED BY _____ TITLE _____ DATE _____
CONDITIONS OF APPROVAL, IF ANY:

ch-1

NMOCD

*See Instructions On Reverse Side

5. LEASE DESIGNATION AND SERIAL NO.
FED SF-078410
6. IF INDIAN, ALLOTTEE OR TRIBE NAME
7. UNIT AGREEMENT NAME
San Juan 29-5 Unit
8. FARM OR LEASE NAME
San Juan 29-5 Unit
9. WELL NO.
#203
10. FIELD AND POOL, OR WILDCAT
Basin Fruitland Pool
11. SEC., T., R., M., OR BLK. AND SURVEY OR AREA
Sec. 6, T29N, R5W
12. COUNTY OR PARISH
Rio Arriba
13. STATE
New Mexico

17. NO. OF ACRES ASSIGNED TO THIS WELL 320.66

20. ROTARY OR CABLE TOOLS
Rotary

22. APPROX. DATE WORK WILL START*
8-17-89

This action is subject to technical and procedural review pursuant to 43 CFR 3165.3 and appeal pursuant to 43 CFR 3165.4.

195 cu.ft.
131 cu.ft.

Open hole completion with perf liner.

APPROVED
AS AMENDED

AUG 29 1989

AREA MANAGER

Submit to Appropriate
District Office
State Lease - 4 copies
Fee Lease - 3 copies

State of New Mexico
Energy, Minerals and Natural Resources Department

Form C-102
Revised 1-1-89

OIL CONSERVATION DIVISION

P.O. Box 2088
Santa Fe, New Mexico 87504-2088

DISTRICT I
P.O. Box 1980, Hobbs, NM 88240

DISTRICT II
P.O. Drawer DD, Artesia, NM 88210

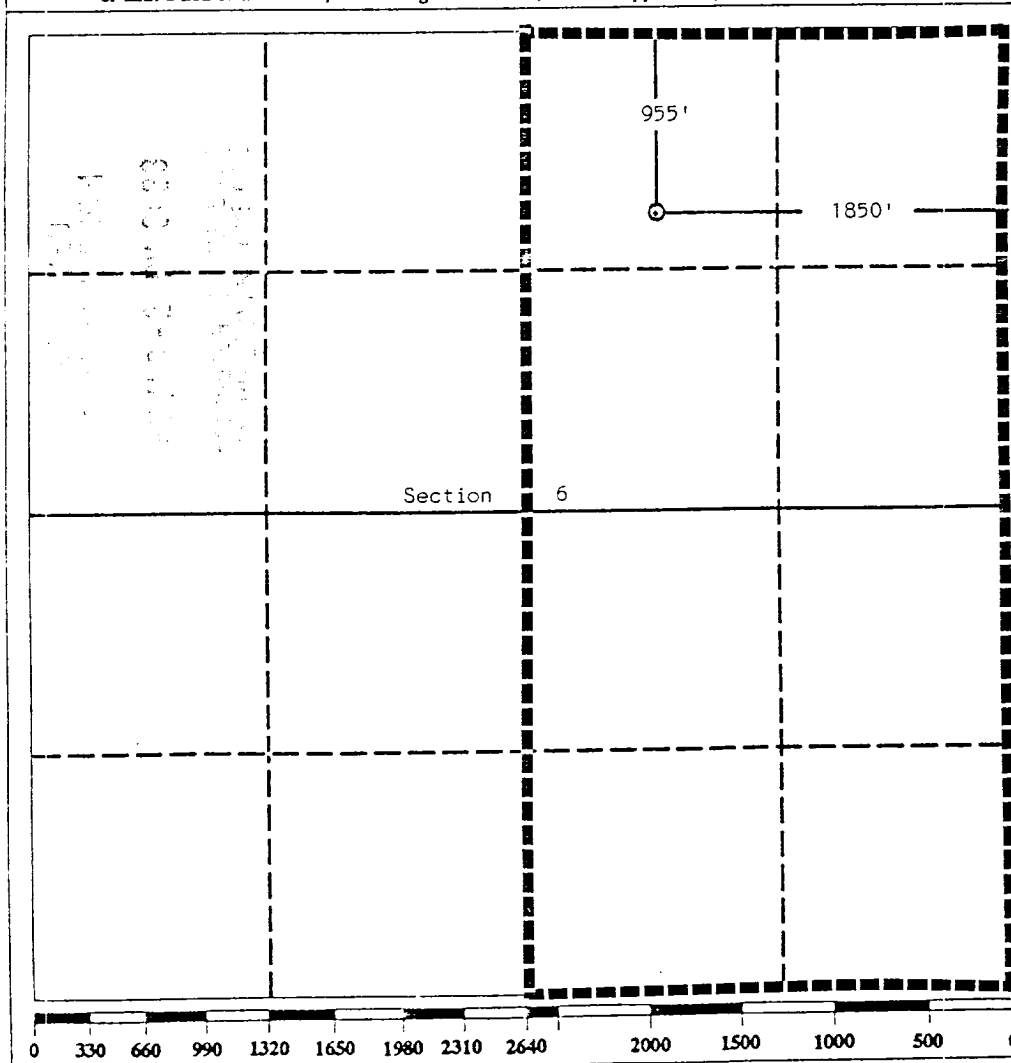
DISTRICT III
1000 Rio Brazos Rd., Aztec, NM 87410

WELL LOCATION AND ACREAGE DEDICATION PLAT

All Distances must be from the outer boundaries of the section

Operator Northwest Pipeline Corporation		Lease San Juan 29-5		Well No. 203
Unit Letter B	Section 6	Township 29 North	Range 5 West NMPM	County Rio Arriba
Actual Footage Location of Well: 955 feet from the North line and 1850 feet from the East line				
Ground level Elev 6669	Producing Formation Fruitland	Pool Basin Fruitland Pool	Dedicated Acreage: 320.66 Acres	

1. Outline the acreage dedicated to the subject well by colored pencil or hachure marks on the plat below.
2. If more than one lease is dedicated to the well, outline each and identify the ownership thereof (both as to working interest and royalty).
3. If more than one lease of different ownership is dedicated to the well, have the interest of all owners been consolidated by communitization, unitization, force-pooling, etc.?
☒ Yes ☐ No If answer is "yes" type of consolidation Unitization
If answer is "no" list the owners and tract descriptions which have actually been consolidated. (Use reverse side of this form if necessary.)
No allowable will be assigned to the well until all interests have been consolidated (by communitization, unitization, forced-pooling, or otherwise) or until a non-standard unit, eliminating such interest, has been approved by the Division.



OPERATOR CERTIFICATION

I hereby certify that the information contained herein in true and complete to the best of my knowledge and belief.

Signature Jeff Vaughan
Printed Name
Jeff Vaughan
Position
Engineer
Company
Northwest Pipeline Corp.
Date
July 10, 1989

SURVEYOR CERTIFICATION

I hereby certify that the well location shown on this plat was plotted from field notes of actual surveys made by me or under my supervision, and that the same is true and correct to the best of my knowledge and belief.

Date Surveyed July 10, 1989
Signature & Seal of Professional Surveyor
Edgar L. Hoover
Certification No. 5979
Edgar L. Hoover, L.S.

NEW MEXICO

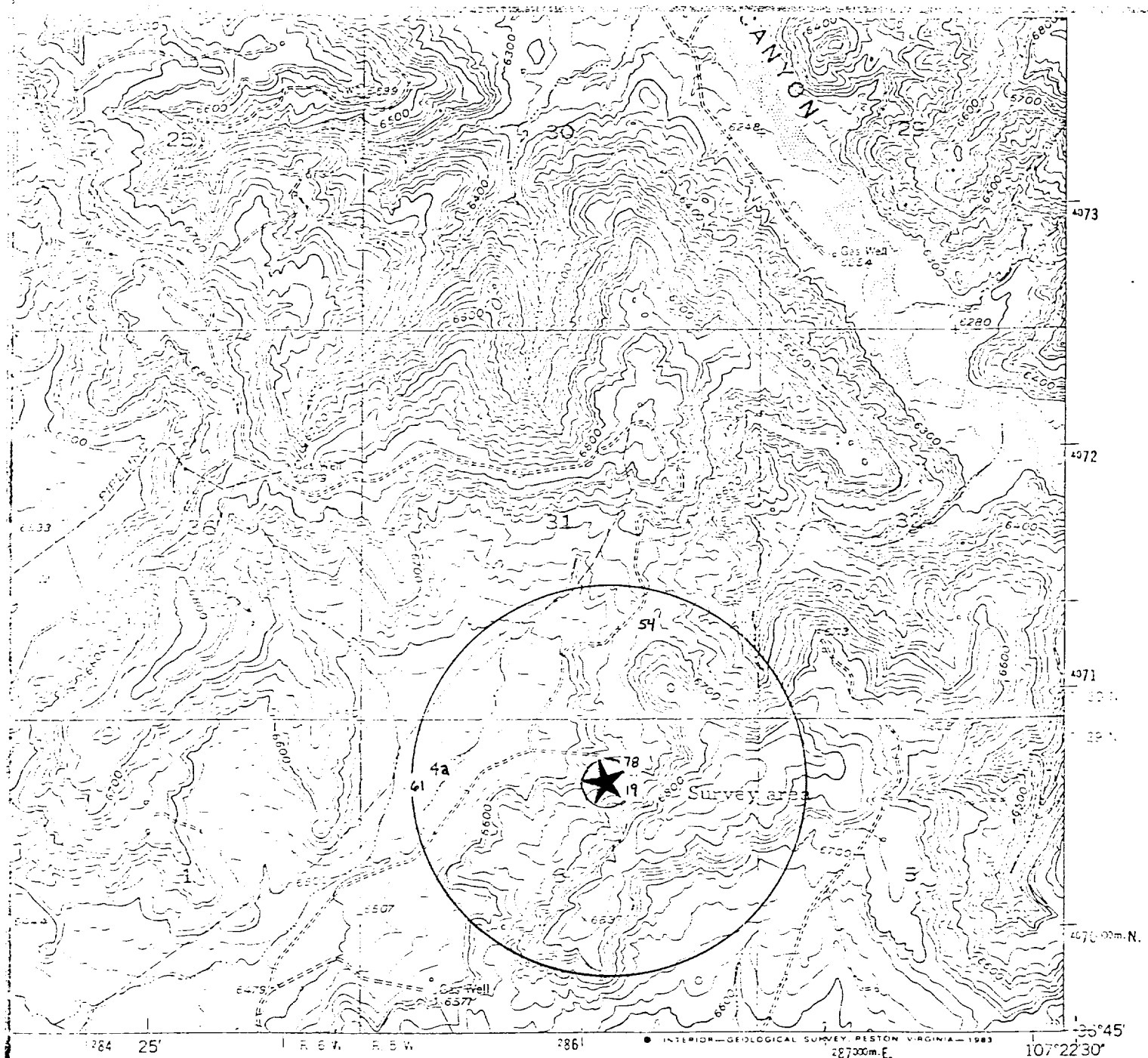
LOMEZ RANCH, N. MEX.

N3545-W10722.5/7.5

QUADRANGLE LOCATION

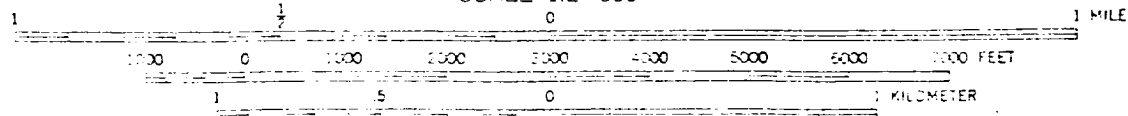
1954

PHOTOREVISED 1982



T29N, R5W

SCALE 1:24,000



CONTOUR INTERVAL 20 FEET

Location map for Well No. S.J.29-5 #203 (All offsets in SJ 29-5 unit)