

UNITED STATES
DEPARTMENT OF THE INTERIOR
BUREAU OF LAND MANAGEMENT

APPLICATION FOR PERMIT TO DRILL, DEEPEN, OR PLUG BACK

1a. TYPE OF WORK

DRILL ☒

DEEPEN ☐

PLUG BACK ☐

b. TYPE OF WELL

OIL
WELL ☐

GAS
WELL ☒

OTHER

SINGLE
ZONE ☒

MULTIPLE
ZONE ☐

2. NAME OF OPERATOR

Northwest Pipeline Corporation

3. ADDRESS OF OPERATOR

3539 East 30th Street - Farmington, NM 87401

4. LOCATION OF WELL (Report location clearly and in accordance with any State requirements.)*

At surface

2500' FNL & 795' FEL

At proposed prod. zone
same

14. DISTANCE IN MILES AND DIRECTION FROM NEAREST TOWN OR POST OFFICE*

+ 6 miles to Gobernador

15. DISTANCE FROM PROPOSED*

LOCATION TO NEAREST
PROPERTY OR LEASE LINE, FT.
(Also to nearest drlg. unit line, if any)

795'

16. NO. OF ACRES IN LEASE

1840

17. NO. OF ACRES ASSIGNED
TO THIS WELL

E/320

18. DISTANCE FROM PROPOSED LOCATION*
TO NEAREST WELL, DRILLING, COMPLETED,
OR APPLIED FOR, ON THIS LEASE, FT.

+ 1500'

19. PROPOSED DEPTH

3290'

20. ROTARY OR CABLE TOOLS

Rotary

21. ELEVATIONS (Show whether DF, RT, GR, etc.)

6439' GR

22. APPROX. DATE WORK WILL START*

23.

This action is subject to technical and
procedural review pursuant to 43 CFR 3100.2-4
and appeal pursuant to 43 CFR 3100.4-4.

DRILLING OPERATIONS AUTHORIZED ARE
SUBJECT TO COMPLIANCE WITH ATTACHED
GENERAL REQUIREMENTS.

SIZE OF HOLE	SIZE OF CASING	WEIGHT PER FOOT	SETTING DEPTH	GENERAL REQUIREMENTS
13-1/2"	9-5/8"	36#	200'	164 sx (195 cu.ft.)
8-3/4"	7"	20#	3090'	417 sx (780 cu.ft.)
6-1/4"	5-1/2"	23#	2990'-3290'	Open hole

1) Plan to drill Fruitland Coal from 3140' to 3290' and set liner in open hole.
Coal zones will be perforated.

2) The east half of Section 30 is dedicated to this well.

Note: BOP to be tested to standards in attached General Requirements
Part 2-C.

ABOVE SPACE DESCRIBE PROPOSED PROGRAM: If proposal is to deepen or plug back, give data on present productive zone and proposed new productive zone. If proposal is to drill or deepen directionally, give pertinent data on subsurface locations and measured and true vertical depths. Give blowout preventer program, if any.

24.

SIGNED

J.R. Vaughan
(This space for Federal or State office use)

TITLE Prod. & Drlg. Engineer

DATE 10-9-89

PERMIT NO.

APPROVAL DATE

APPROVED BY
CONDITIONS OF APPROVAL, IF ANY:

TITLE

DATE

ch-1

ck
E

*See Instructions On Reverse Side

Title 18 U.S.C. Section 1001, makes it a crime for any person knowingly and willfully to make to any department or agency of the United States any false, fictitious or fraudulent statements or representations as to any matter within its jurisdiction.

30-139-24581

RECEIVED
NOV 22 1989
OIL CON. DIV
DIST. 3

APPROVED
AS AMENDED

NOV 20 1989

AREA MANAGER

Submit to Appropriate
District Office
State Lease - 4 copies
Fee Lease - 3 copies

State of New Mexico
Energy, Minerals and Natural Resources Department

Form C-102
Revised 1-1-89

OIL CONSERVATION DIVISION

P.O. Box 2088
Santa Fe, New Mexico 87504-2088

DISTRICT I
P.O. Box 1980, Hobbs, NM 88240

DISTRICT II
P.O. Drawer DD, Artesia, NM 88210

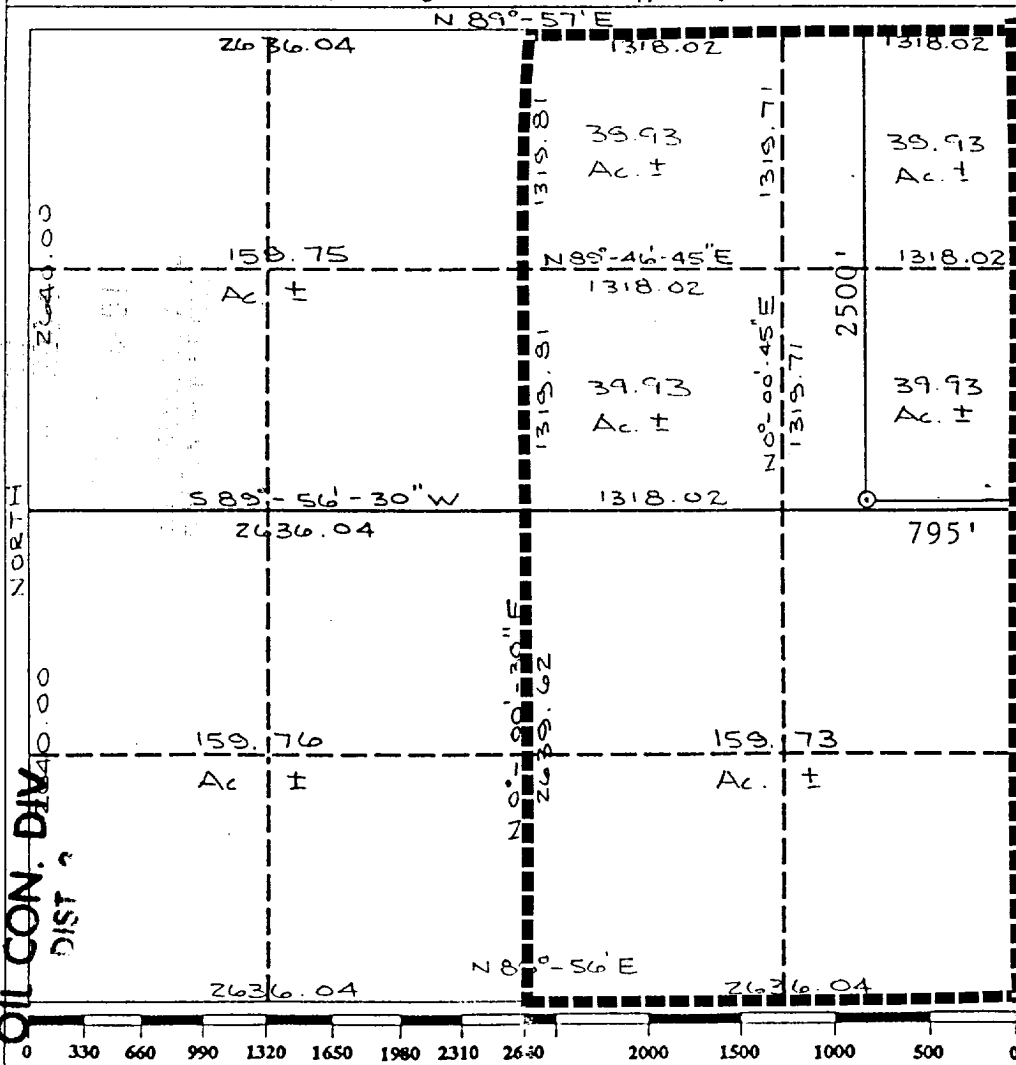
DISTRICT III
1000 Rio Brazos Rd., Aztec, NM 87410

WELL LOCATION AND ACREAGE DEDICATION PLAT

All Distances must be from the outer boundaries of the section

Operator NORTHWEST PIPELINE			Lease SAN JUAN 29-6		Well No. 213
Unit Letter H	Section 30	Township 29N	Range 6W	County NMPM Rio Arriba	
Actual Footage Location of Well: 2500 feet from the North line and 795 feet from the East line					
Ground level Elev. 6439	Producing Formation Fruitland		Pool Basin Fruitland	Dedicated Acreage: 320 Acres	

1. Outline the acreage dedicated to the subject well by colored pencil or hatchure marks on the plat below.
2. If more than one lease is dedicated to the well, outline each and identify the ownership thereof (both as to working interest and royalty).
3. If more than one lease of different ownership is dedicated to the well, have the interest of all owners been consolidated by communitization, unitization, force-pooling, etc.?
☒ Yes ☐ No If answer is "yes" type of consolidation **unitized**
If answer is "no" list the owners and tract descriptions which have actually been consolidated. (Use reverse side of this form if necessary.)
No allowable will be assigned to the well until all interests have been consolidated (by communitization, unitization, forced-pooling, or otherwise) or until a non-standard unit, eliminating such interest, has been approved by the Division.



OPERATOR CERTIFICATION

I hereby certify that the information contained herein is true and complete to the best of my knowledge and belief.

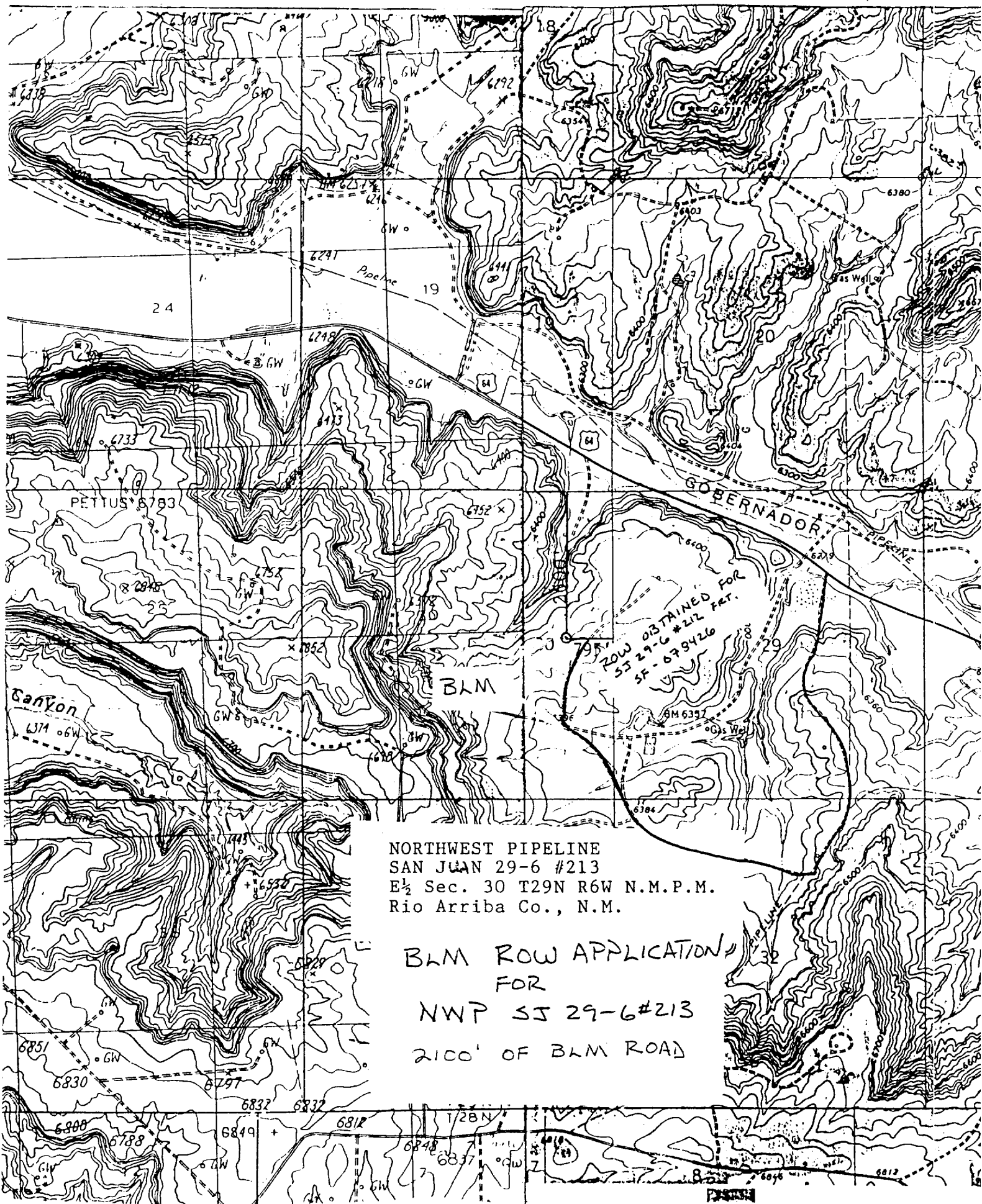
Signature *Jeff Vaughan*
Printed Name **Jeff Vaughan**
Position **Engineer**
Company **Northwest Pipeline Corp.**
Date **10-3-89**

SURVEYOR CERTIFICATION

I hereby certify that the well location shown on this plat was plotted from field notes of actual surveys made by me or under my supervision, and that the same is true and correct to the best of my knowledge and belief.

Date Surveyed **September 1989**
Signature *[Signature]*
Professional Surveyor
Certificate No. **9672**

RECEIVED
NOV 22 1989
OIL CON. DIV.
DIST. 2



NORTHWEST PIPELINE
SAN JUAN 29-6 #213
E $\frac{1}{2}$ Sec. 30 T29N R6W N.M.P.M.
Rio Arriba Co., N.M.

BLM ROW APPLICATION
FOR
NWP SS 29-6 #213
2100' OF BLM ROAD