

Submit to Appropriate
District Office
State Lease -- 6 copies
Fee Lease -- 5 copies

State of New Mexico
Energy, Minerals and Natural Resources Department

Form C-101
Revised 1-1-89

OIL CONSERVATION DIVISION

DISTRICT I
P.O. Box 1980, Hobbs, NM 88240

P.O. Box 2088

Santa Fe, New Mexico 87504-2088

DISTRICT II
P.O. Drawer DD, Artesia, NM 88210

DISTRICT III
1000 Rio Brazos Rd., Aztec, NM 87410

API NO. (assigned by OCD on New Wells)

5. Indicate Type of Lease

STATE ☐

FEE ☒

6. State Oil & Gas Lease No.

APPLICATION FOR PERMIT TO DRILL, DEEPEN, OR PLUG BACK

1a. Type of Work:

DRILL ☒

RE-ENTER ☐

DEEPEN ☐

PLUG BACK ☐

b. Type of Well:

OIL
WELL ☐

GAS
WELL ☒

OTHER

SINGLE
ZONE ☒

MULTIPLE
ZONE ☐

7. Lease Name or Unit Agreement Name

San Juan 29-6 Unit

2. Name of Operator

Northwest Pipeline Corporation

8. Well No.

216

3. Address of Operator

3539 East 30th St., Farmington, NM 87401

9. Pool name or Wildcat

Basin Fruitland Coal Gas

4. Well Location

Unit Letter

K

:

1991

Feet From The

South

Line and

1589

Feet From The

West

Line

Section 4

Township

29N

Range

6W

NMPM

Rio Arriba

County

10. Proposed Depth

3350' (+)

11. Formation

Fruitland

12. Rotary or C.T.

Rotary

13. Elevations (Show whether DF, RT, GR, etc.)

6404' (GL Unprepared)

14. Kind & Status Plug. Bond

Blanket

15. Drilling Contractor

Advise Later

16. Approx. Date Work will start

Upon Approval

17.

PROPOSED CASING AND CEMENT PROGRAM

6-16-90

SIZE OF HOLE	SIZE OF CASING	WEIGHT PER FOOT	SETTING DEPTH	SACKS OF CEMENT	EST. TOP
12 1/4"	9-5/8"	36# K-55 ST&C	250'	150 Sxs	Circ to Surface
8 1/2"	7"	23# K-55 LT&C	3000'	380 Sxs	Circ to Surface
* 6-1/8"	5 1/2" Liner	15.5# or 23#	3350'		Top of Liner

*If the coal is cleated a 5 1/2", 23#, P-110 liner will be run in the opened hole without being cemented.

*If the coal is not cleated a 5 1/2", 15.5#, J-55 liner will be run, cemented w/85 Sxs and the well will be fractured.

6-16-90
UNLESS OTHERWISE INDICATED,
ALL INFORMATION MUST BE SUBMITTED
WITHIN 10 DAYS.

RECEIVED
JAN 16 1990
OIL CON. DIV.
DIST. 3

Use mud additives as required for control.

BOP EQUIP: (See attached schematic - Fig. 7-9 or 7-10)

IN ABOVE SPACE DESCRIBE PROPOSED PROGRAM: IF PROPOSAL IS TO DEEPEN OR PLUG BACK, GIVE DATA ON PRESENT PRODUCTIVE ZONE AND PROPOSED NEW PRODUCTIVE ZONE. GIVE BLOWOUT PREVENTER PROGRAM, IF ANY.

I hereby certify that the information above is true and complete to the best of my knowledge and belief.

SIGNATURE Paul C. Thompson TITLE Manager Prod. & Drlg. DATE 1-12-90

TYPE OR PRINT NAME Paul. Thompson TELEPHONE NO. 599-3400

(Sanders)

(This space for State Use)

APPROVED BY [Signature] TITLE SUPERVISOR, DISTRICT 3 DATE JAN 16 1990

CONDITIONS OF APPROVAL, IF ANY:

Submit to Appropriate
District Office
State Lease - 4 copies
Fee Lease - 3 copies

State of New Mexico
Energy, Minerals and Natural Resources Department

Form C-102
Revised 1-1-89

OIL CONSERVATION DIVISION

P.O. Box 2088
Santa Fe, New Mexico 87504-2088

DISTRICT I
P.O. Box 1980, Hobbs, NM 88240

DISTRICT II
P.O. Drawer DD, Artesia, NM 88210

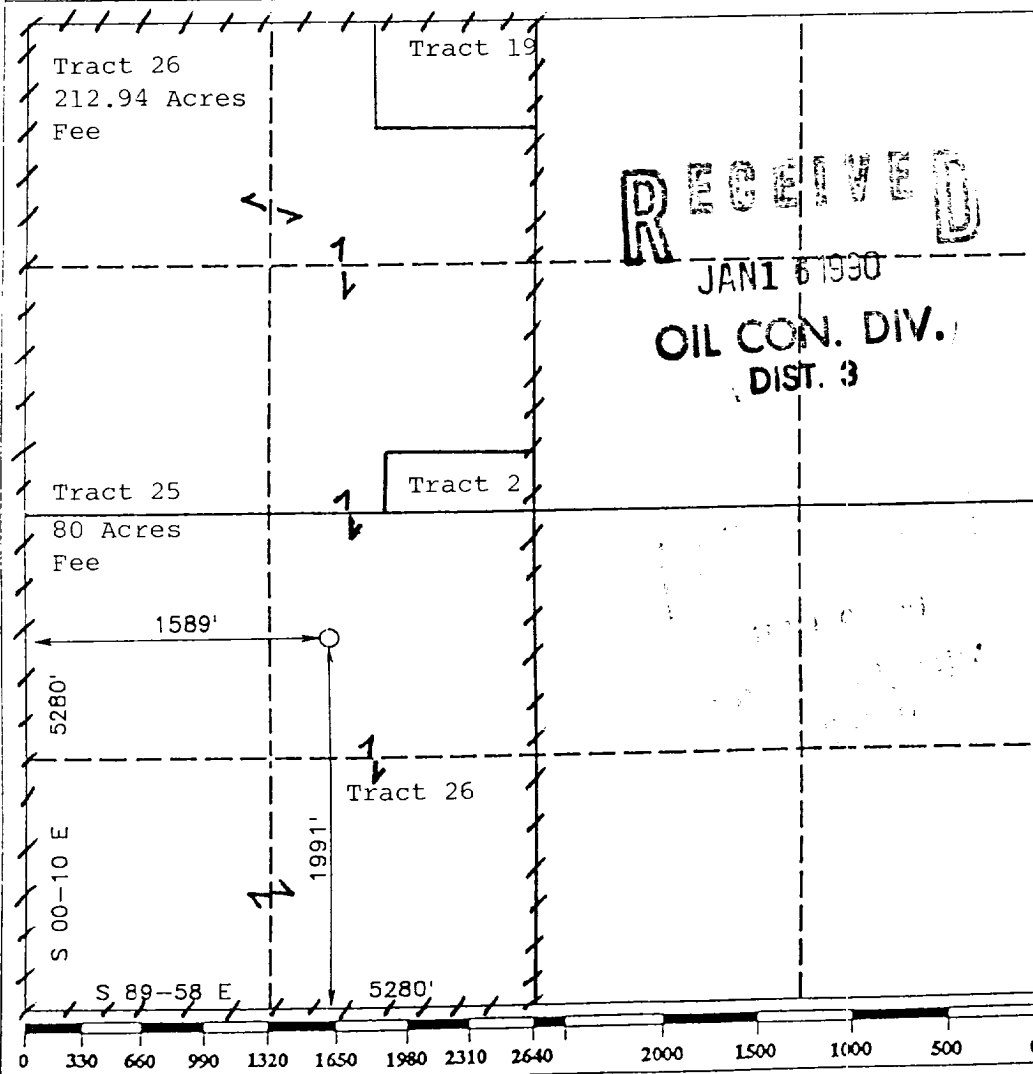
DISTRICT III
1000 Rio Brazos Rd., Aztec, NM 87410

WELL LOCATION AND ACREAGE DEDICATION PLAT

All Distances must be from the outer boundaries of the section

Operator NORTHWEST PIPELINE CORP.		Lease SAN JUAN 29-6 UNIT		Well No. 216
Unit Letter K	Section 4	Township T.29 N.	Range R.6 W.	County RIO ARriba COUNTY
Actual Footage Location of Well: 1991 feet from the SOUTH line and 1589 feet from the WEST line				
Ground level Elev. 6404	Producing Formation Fruitland	Pool Basin Fruitland Coal Gas	Dedicated Acreage: 319.35 Acres	

- Outline the acreage dedicated to the subject well by colored pencil or hatchure marks on the plat below.
- If more than one lease is dedicated to the well, outline each and identify the ownership thereof (both as to working interest and royalty).
- If more than one lease of different ownership is dedicated to the well, have the interest of all owners been consolidated by communization, unitization, force-pooling, etc.?
☒ Yes ☐ No If answer is "yes" type of consolidation Unitization
If answer is "no" list the owners and tract descriptions which have actually been consolidated. (Use reverse side of this form if necessary).
No allowable will be assigned to the well until all interests have been consolidated (by communization, unitization, forced-pooling, or otherwise) or until a non-standard unit, eliminating such interest, has been approved by the Division.



OPERATOR CERTIFICATION

I hereby certify that the information contained herein is true and complete to the best of my knowledge and belief.

Signature
Paul C Thompson
Printed Name
Paul Thompson
Position
Manager Prod. & Drlg.
Company
Northwest Pipeline Corp.
Date
1-12-90

SURVEYOR CERTIFICATION

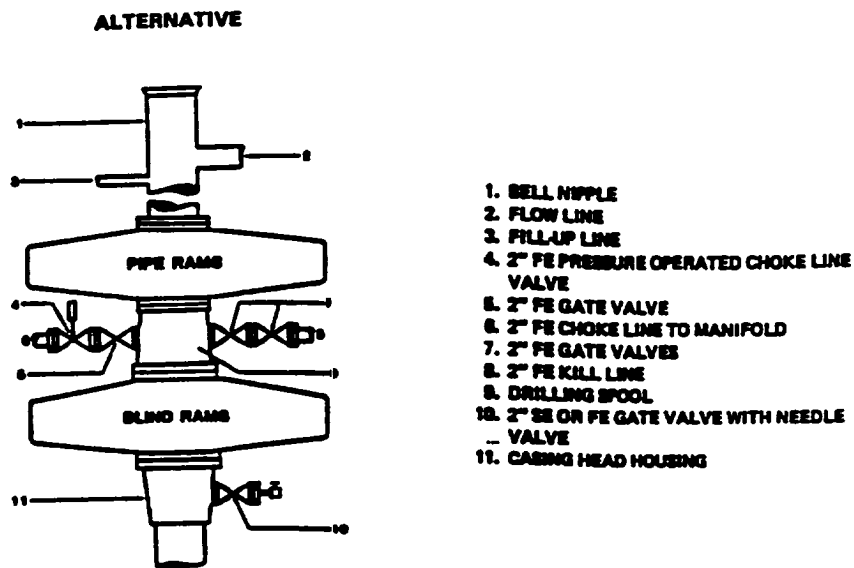
I hereby certify that the well location shown on this plat was plotted from field notes of actual surveys made by me or under my supervision, and that the same is true and correct to the best of my knowledge and belief.

Date Surveyed
DECEMBER 19, 1989
Signature & Seal of Professional Surveyor
R. Howard Daggett
R. HOWARD DAGGETT
Certificate No.
9670
Registered Professional
Land Surveyor

Tract 19 = 16.91 Acres = Fee

Tract 2 = 9.5 Acres = SF-078278

FIELD PRACTICES AND STANDARDS



NOTE: THE DRILLING SPOOL MAY BE LOCATED BELOW BOTH SETS OF RAMS IF A DOUBLE PREVENTER IS USED AND IT DOES NOT HAVE SUITABLE OUTLETS BETWEEN RAMS

Figure 7-9. Standard Hydraulic Blowout Preventer Assembly
3 M Working Pressure Alternative 1

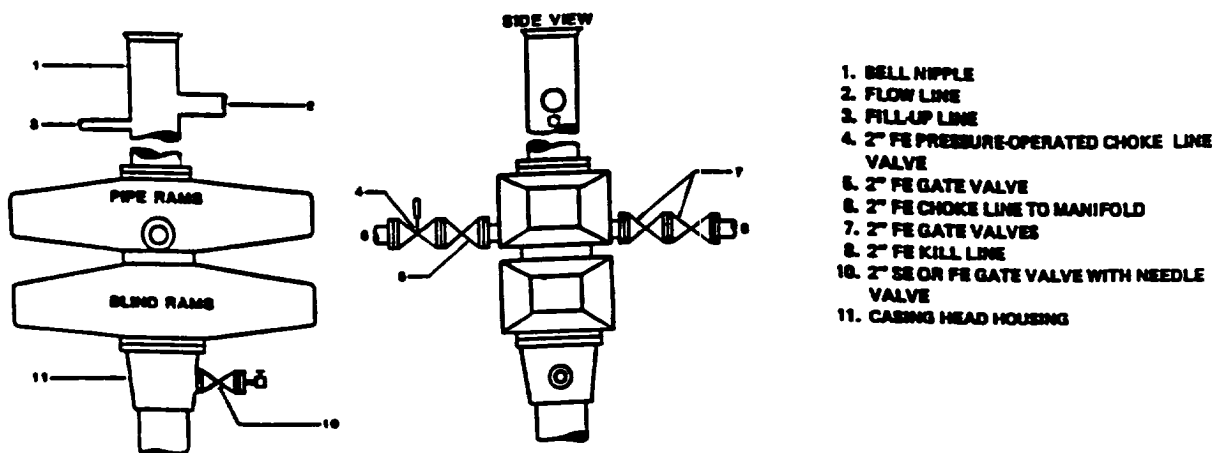
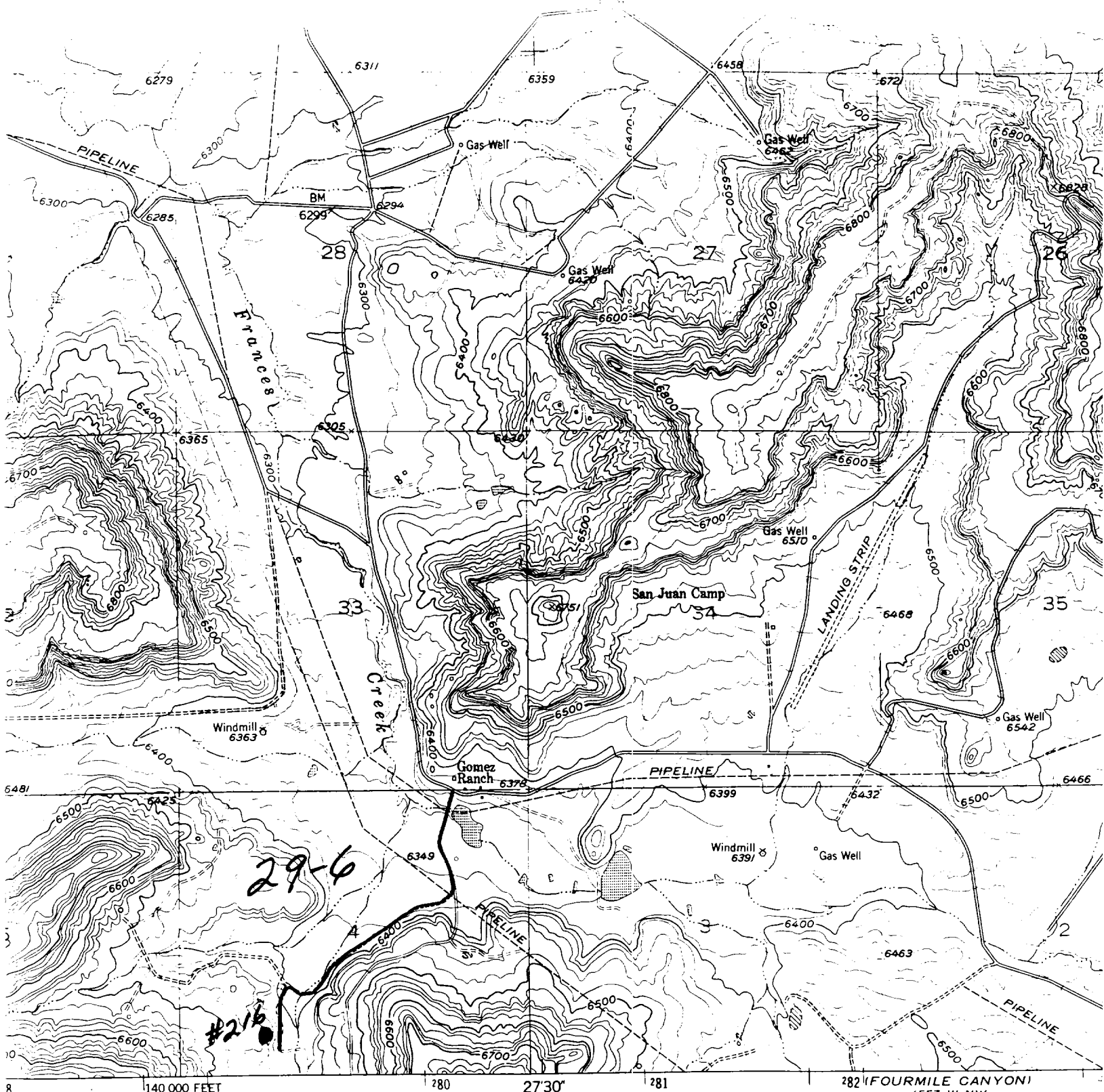
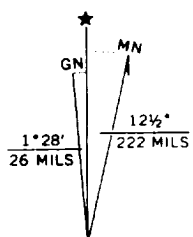


Figure 7-10. Standard Hydraulic Blowout Preventer Assembly
3 M Working Pressure Alternative 3 (without Drilling Spool)



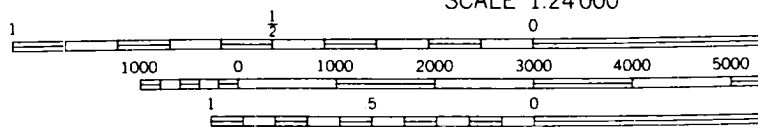
Geological Survey

om
1954
datum
rdinate system,
r grid ticks,



UTM GRID AND 1982 MAGNETIC NORTH
DECLINATION AT CENTER OF SHEET

To place on the predicted North American Datum 1983
move the projection lines 2 meters north and
54 meters east as shown by dashed corner ticks



CONTOUR INTERVAL 20 FEET
NATIONAL GEODETIC VERTICAL DATUM OF 1929

THIS MAP COMPLIES WITH NATIONAL MAP ACCURACY S
FOR SALE BY U. S. GEOLOGICAL SURVEY, DENVER, COLORADO 80225.
A FOLDER DESCRIBING TOPOGRAPHIC MAPS AND SYMBOLS IS AVA