

UNITED STATES
DEPARTMENT OF THE INTERIOR
BUREAU OF LAND MANAGEMENT

APPLICATION FOR PERMIT TO DRILL, DEEPEN, OR PLUG BACK

1a. TYPE OF WORK

DRILL ☒

DEEPEN ☐

PLUG BACK ☐

b. TYPE OF WELL

OIL
WELL ☐

GAS
WELL ☒

OTHER

SINGLE
ZONE ☒

MULTIPLE
ZONE ☐

2. NAME OF OPERATOR

Richmond Petroleum, Inc.

(214) 720-7730

3. ADDRESS OF OPERATOR

2651 N. Harwood, Suite 360, Dallas, Texas 75201

4. LOCATION OF WELL (Report location clearly and in accordance with State regulations.)

At surface

1,001' FSL & 1,066' FWL

At proposed prod. zone

5. LEASE DESIGNATION AND SERIAL NO.

NM- 18322

6. IF INDIAN, ALLOTTEE OR TRIBE NAME

N/A

7. UNIT AGREEMENT NAME

N/A

8. FARM OR LEASE NAME

Federal 29-4-23

9. WELL NO.

1

10. FIELD AND POOL, OR WILDCAT

Basin-Fruitland Coal Gas

11. SEC., T., R., M. OR BLK.
AND SURVEY OR AREA

Sec. 23 T29N, R4W NMPM

12. COUNTY OR PARISH 13. STATE

Rio Arriba New Mexico

14. DISTANCE IN MILES AND DIRECTION FROM NEAREST TOWN OR POST OFFICE

8-1/2 air miles east of Gobernador, NM

15. DISTANCE FROM PROPOSED*
LOCATION TO NEAREST
PROPERTY OR LEASE LINE, FT.
(Also to nearest drig. unit line, if any)

1,001'

16. NO. OF ACRES IN LEASE

640

17. NO. OF ACRES ASSIGNED
TO THIS WELL

320

18. DISTANCE FROM PROPOSED LOCATION*
TO NEAREST WELL, DRILLING, COMPLETED,
OR APPLIED FOR, ON THIS LEASE, FT.

100'

19. PROPOSED DEPTH

4,170'

20. ROTARY OR CABLE TOOLS

Rotary

21. ELEVATIONS (Show whether DF, RT, GR, etc.)

7,315' GR

22. APPROX. DATE WORK WILL START*

As soon as possible

23. PROPOSED CASING AND CEMENTING PROGRAM

SIZE OF HOLE	SIZE OF CASING	WEIGHT PER FOOT	SETTING DEPTH	QUANTITY OF CEMENT
12-1/4"	8-5/8"	24#	240'	140 sx or to surface
7-7/8"	5-1/2"	15.5#	4,170'	570 sx

TIGHT HOLE. PLEASE KEEP CONFIDENTIAL.

1. Per NMOCD Rule 102(c), a copy of this APD has been mailed to Schalk Development Company, operator of a well in this (SWSW) quarter-quarter. Well site has been inspected by Schalk Development Company.

2. Drilling Technical Program attached.

3. Surface use and operations plan pursuant to NTL-6 is attached.

"Approval of this action does not warrant that the applicant holds legal or equitable rights or title to this lease."

IN ABOVE SPACE DESCRIBE PROPOSED PROGRAM: If proposal is to deepen or plug back, give data on present productive lease and proposed new productive zone. If proposal is to drill or deepen directionally, give pertinent data on subsurface locations and measured and true vertical depths. Give blowout preventer program, if any.

24.

SIGNED

TITLE Engineer

DATE

APPROVED

AS AMENDED

(This space for Federal or State office use)

PERMIT NO.

APPROVAL DATE

APPROVED BY

TITLE

CONDITIONS OF APPROVAL, IF ANY:

Hold 4-109 FOR CR

*See Instructions On Reverse Side

OIL CONSERVATION DIVISION

STATE OF NEW MEXICO
ENERGY AND MINERALS DEPARTMENTP. O. BOX 2088
SANTA FE, NEW MEXICO 87501Form C-102
Revised 10-1-78

All distances must be from the outer boundaries of the Section.

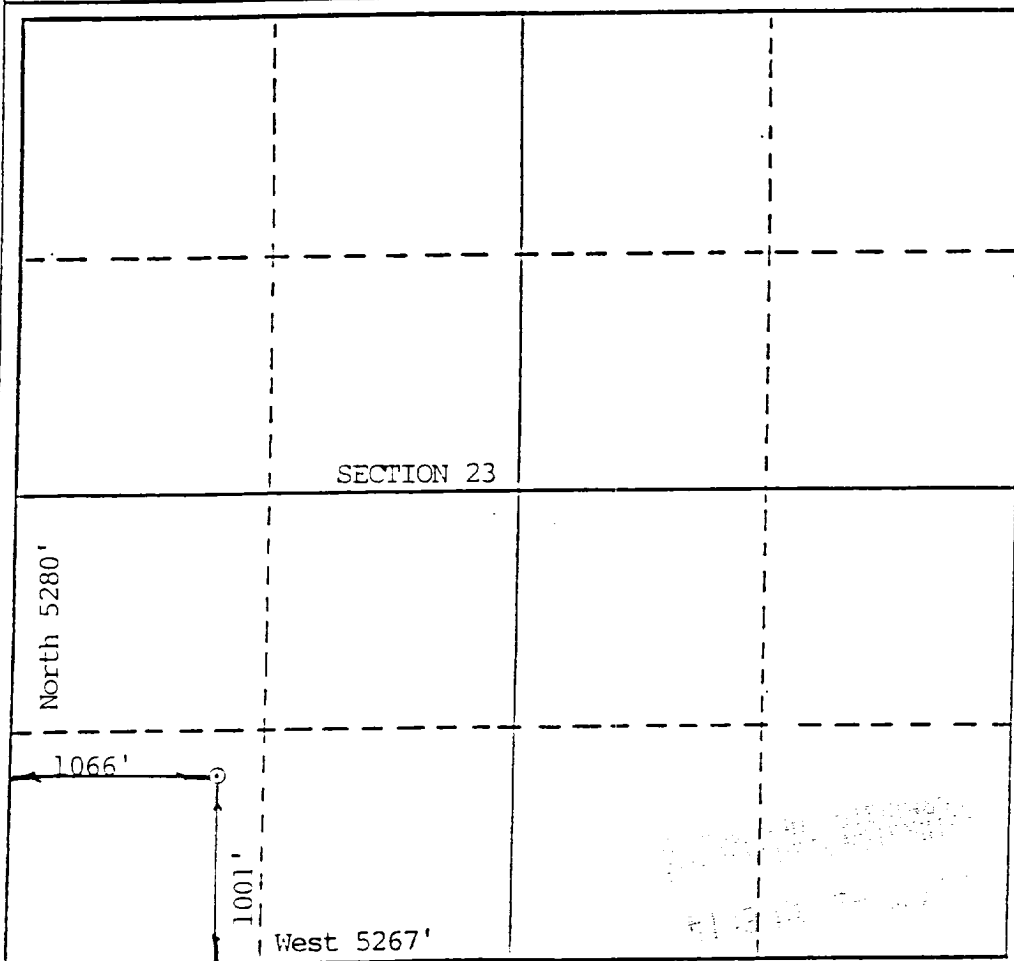
Operator Richmond Petroleum, Inc.		Lease Federal 29-4-23		Well No. 1
Unit Letter M	Section 23	Township 29N	Range 4W	County Rio Arriba
Actual Footage Location of Well: 1001 feet from the South line and 1066 feet from the West line				
Ground Level Elev. 7315	Producing Formation Fruitland	Pool Basin	Dedicated Acreage: 320 Acres	

1. Outline the acreage dedicated to the subject well by colored pencil or hachure marks on the plat below.
2. If more than one lease is dedicated to the well, outline each and identify the ownership thereof (both as to working interest and royalty).
3. If more than one lease of different ownership is dedicated to the well, have the interests of all owners been consolidated by communitization, unitization, force-pooling, etc?

☐ Yes ☒ No If answer is "yes," type of consolidation will be communitized

If answer is "no," list the owners and tract descriptions which have actually been consolidated. (Use reverse side of this form if necessary.)

No allowable will be assigned to the well until all interests have been consolidated (by communitization, unitization, forced-pooling, or otherwise) or until a non-standard unit, eliminating such interests, has been approved by the Division.



CERTIFICATION

I hereby certify that the information contained herein is true and complete to the best of my knowledge and belief.

Name

Engineer

Position

Merrion Oil & Gas Corporation

Company

9/26/89

Date

I hereby certify that the well location shown on this plat was plotted from field notes of actual surveys made by me or under my supervision, and that the same is true and correct to the best of my knowledge.

Date Surveyed

9/27/89

Registered Land Surveyor

R. Howard Daggott

Certificate No. 1734

9679

Richmond Petroleum
Federal 29-4-23 No. 1
1001' FSL & 1066' FWL (SWSW)
Sec. 23, 129N, R4W
Rio Arriba County, New Mexico

CONFIDENTIAL

