

CONFIDENTIAL
UNITED STATES
DEPARTMENT OF THE INTERIOR
BUREAU OF LAND MANAGEMENT

SUBMIT IN TRIPLICATE*
(Other instructions on
reverse side)

30-039-24618
Form approved.
Budget Bureau No. 1004-0136
Expires August 31, 1985

APPLICATION FOR PERMIT TO DRILL, DEEPEN, OR PLUG BACK

1a. TYPE OF WORK

DRILL ☒

DEEPEN ☐

PLUG BACK ☐

b. TYPE OF WELL

OIL
WELL ☐

GAS
WELL ☒

OTHER

SINGLE
ZONE ☒

MULTIPLE
ZONE ☐

2. NAME OF OPERATOR

Richmond Petroleum, Inc.

(214) 720-7730

3. ADDRESS OF OPERATOR

2651 N. Harwood, Suite 360, Dallas, Texas 75201

4. LOCATION OF WELL (Report location clearly and in accordance with any State requirements.)

At surface

1,257' FSL & 1,054' FWL
At proposed prod. zone

14. DISTANCE IN MILES AND DIRECTION FROM NEAREST TOWN OR POST OFFICE

8-1/2 air miles east of Gobernador, NM

15. DISTANCE FROM PROPOSED*
LOCATION TO NEAREST
PROPERTY OR LEASE LINE, FT.
(Also to nearest drig. unit line, if any)

1,054'

16. NO. OF ACRES IN LEASE

640

17. NO. OF ACRES ASSIGNED
TO THIS WELL

320

18. DISTANCE FROM PROPOSED LOCATION*
TO NEAREST WELL, DRILLING, COMPLETED,
OR APPLIED FOR, ON THIS LEASE, FT.

600'

19. PROPOSED DEPTH

4,150'

20. ROTARY OR CABLE TOOLS

Rotary

21. ELEVATIONS (Show whether DF, RT, GR, etc.)

7355' 7340'

22. APPROX. DATE WORK WILL START*

As soon as possible

23. PROPOSED CASING AND CEMENTING PROGRAM

SIZE OF HOLE	SIZE OF CASING	WEIGHT PER FOOT	SETTING DEPTH	QUANTITY OF CEMENT
12-1/4"	8-5/8"	24#	240'	140 sx or to surface
7-7/8"	5-1/2"	15.5#	4,190'	560 sx Surface

TIGHT HOLE. PLEASE KEEP CONFIDENTIAL.

1. Per NMOCD Rule 102(c), a copy of this APD has been mailed to Schaik Development Company, operator of a well in this (SWSW) quarter-quarter. Well site has been inspected by Schaik Development Company.
2. Drilling Technical Program attached.
3. Surface use and operations plan pursuant to NTL-6 is attached.

**"Approval of this application does
not constitute an agreement
holding for acquisition rights**

IN ABOVE SPACE DESCRIBE PROPOSED PROGRAM: If proposal is to deepen or plug back, give data on present productive zone and proposed new productive zone. If proposal is to drill or deepen directionally, give pertinent data on subsurface locations and measured and true vertical depths. Give blowout preventer program, if any.

24.

SIGNED

[Signature]

TITLE

Engineer

DATE 10/9/89

(This space for Federal or State office use)

PERMIT NO.

APPROVAL DATE

APPROVED BY

CONDITIONS OF APPROVAL, IF ANY:

TITLE

**APPROVED
AS AMENDED**

JAN 08 1990

[Signature]
AREA MANAGER

Hold C-104 FOR CA

*See instructions On Reverse Side

All distances must be from the outer boundaries of the Section.

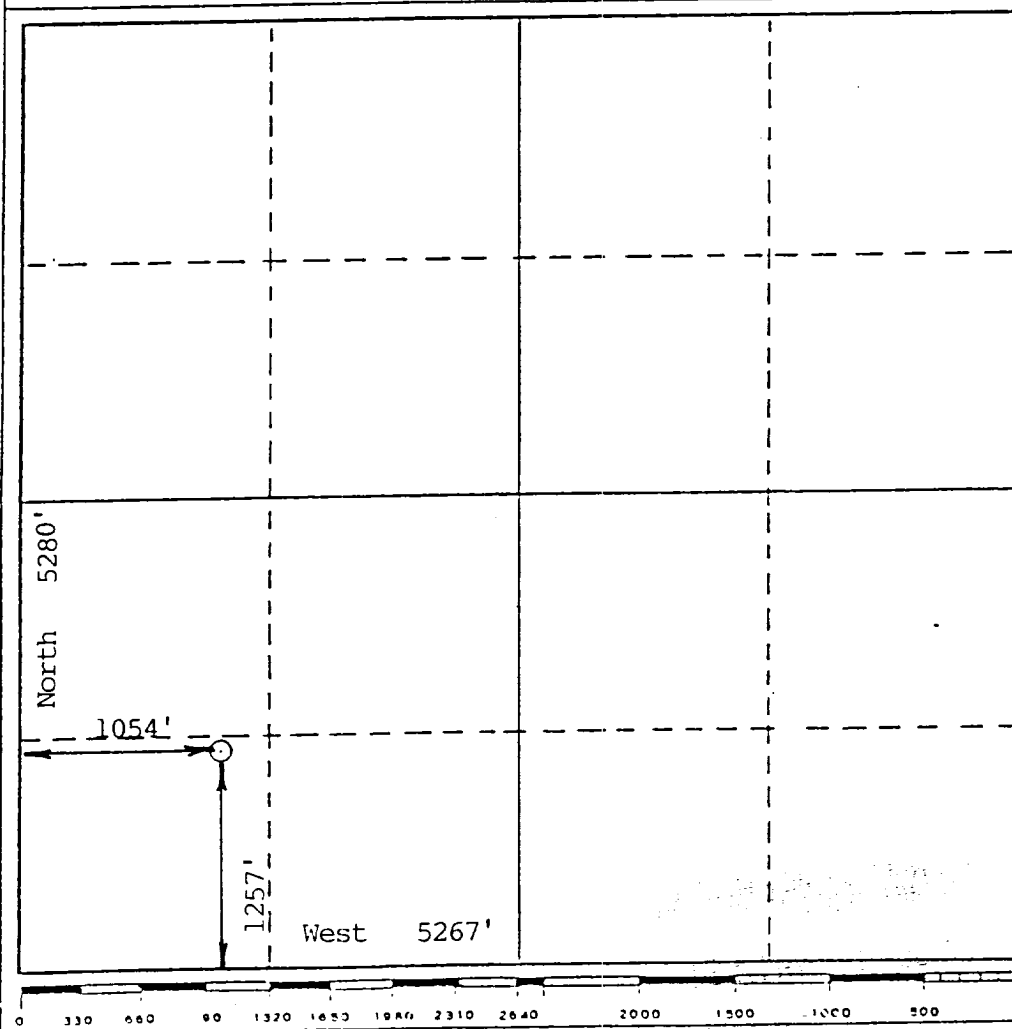
Operator Richmond Petroleum, Inc.			Lease Federal 29-4-25		Well No. 2
Unit Letter M	Section 25	Township 29 N	Range 4 W	County Rio Arriba	
Actual Footage Location of Well: 1257 feet from the South line and 1054 feet from the West line					
Ground Level Elev. 7340	Producing Formation Fruitland		Pool Basin		Dedicated Acreage: 320 Acres

1. Outline the acreage dedicated to the subject well by colored pencil or hachure marks on the plat below.
2. If more than one lease is dedicated to the well, outline each and identify the ownership thereof (both as to working interest and royalty).
3. If more than one lease of different ownership is dedicated to the well, have the interests of all owners been consolidated by communitization, unitization, force-pooling, etc?

☐ Yes ☒ No If answer is "yes," type of consolidation will be communitized

If answer is "no," list the owners and tract descriptions which have actually been consolidated. (Use reverse side of this form if necessary.)

No allowable will be assigned to the well until all interests have been consolidated (by communitization, unitization, forced-pooling, or otherwise) or until a non-standard unit, eliminating such interests, has been approved by the Division.



CERTIFICATION

I hereby certify that the information contained herein is true and complete to the best of my knowledge and belief.

Howard Daggett

Name
Engineer
Position
Richmond Petroleum, Inc.
Company
10/8/89
Date

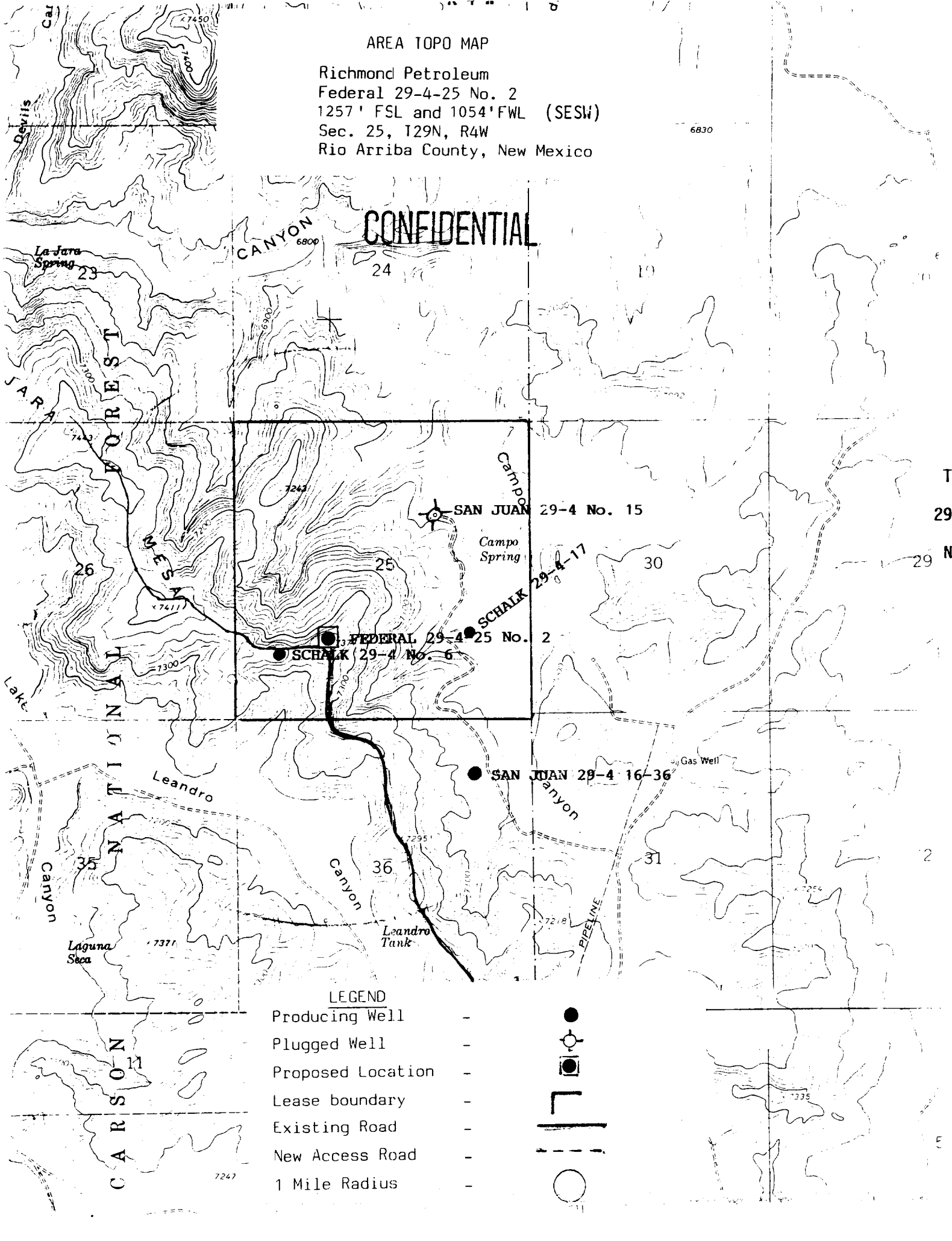
I hereby certify that the well location shown on this plat was plotted from field notes of actual surveys made by me or under my supervision, and that the same is true and correct to the best of my knowledge and belief.

Sept. 28, 1989
Date Surveyed
R. Howard Daggett
Registered Professional Land Surveyor
Certificate No. 9679
Registered Professional Land Surveyor

AREA TOPO MAP

Richmond Petroleum
Federal 29-4-25 No. 2
1257' FSL and 1054'FWL (SESW)
Sec. 25, T29N, R4W
Rio Arriba County, New Mexico

CONFIDENTIAL



LEGEND

- Producing Well -
- Plugged Well -
- Proposed Location -
- Lease boundary -
- Existing Road -
- New Access Road -
- 1 Mile Radius -

