

UNITED STATES
DEPARTMENT OF THE INTERIOR
BUREAU OF LAND MANAGEMENT

APPLICATION FOR PERMIT TO DRILL, DEEPEN, OR PLUG BACK

1a. TYPE OF WORK

DRILL ☒

DEEPEN ☐

PLUG BACK ☐

b. TYPE OF WELL

OIL
WELL ☐

GAS
WELL ☒

OTHER

SINGLE
ZONE ☒

MULTIPLE
ZONE ☐

2. NAME OF OPERATOR

Phillips Petroleum Company

3. ADDRESS OF OPERATOR

300 W. Arrington, Suite 200, Farmington, N.M. 87401

4. LOCATION OF WELL (Report location clearly and in accordance with any State requirements.)*

At surface Unit B, 892' FNL & 1810' FEL

At proposed prod. zone

Unit B, 892' FNL & 1810' FEL

14. DISTANCE IN MILES AND DIRECTION FROM NEAREST TOWN OR POST OFFICE*

25 miles east from Blanco

10. DISTANCE FROM PROPOSED* 3470' FWL of
LOCATION TO NEAREST 29-5 Unit
PROPERTY OR LEASE LINE, FT.
(Also to nearest drlg. unit line, if any)

16. NO. OF ACRES IN LEASE
1280

18. DISTANCE FROM PROPOSED LOCATION*
TO NEAREST WELL, DRILLING, COMPLETED,
OR APPLIED FOR, ON THIS LEASE, FT. 303' SW
from #27

19. PROPOSED DEPTH
3675' (+) 3523

17. NO. OF ACRES ASSIGNED
TO THIS WELL
320 Ac. E/2 of Section

20. ROTARY OR CABLE TOOLS

Rotary

21. ELEVATIONS (Show whether DF, RT, GR, etc.)

6605' (GL Unprepared) DRILLING OPERATIONS AUTHORIZED ARE

22. APPROX. DATE WORK WILL START*

Upon Approval

23. SUBJECT TO COMPLIANCE WITH ATTACHED
"GENERAL REQUIREMENTS"
PROPOSED CASING AND CEMENTING PROGRAM

| SIZE OF HOLE | SIZE OF CASING | WEIGHT PER FOOT | SETTING DEPTH | QUANTITY OF CEMENT |
|--------------|----------------|-----------------|---------------|--------------------------|
| 12-1/4" | 9-5/8" | 36#, K-55 | 250' | 150 sxs, Circ to Surface |
| 8-1/2" | 7" | 23#, K-55 | 3050' | 500 sxs, Circ to Surface |
| 6-1/8" | 5-1/2" | 15.5# or 23# | 2350-3523' | * |

*If the coal is cleated a 5-1/2", 23#, P-110 liner will be run in the open hole without being cemented.

*If the coal is not cleated a 5-1/2", 15.5#, K-55 liner will be run, cemented with 100 sxs cement and the well will be fractured.

Mud program and BOP equipment - See attached.

IN ABOVE SPACE DESCRIBE PROPOSED PROGRAM: If proposal is to deepen or plug back, give data on present productive zone and proposed new productive zone. If proposal is to drill or deepen directionally, give pertinent data on subsurface locations and measured and true vertical depths. Give blowout preventer program, if any.

24.

SIGNED *S.M. Sanders*

TITLE Supv. Regulatory Affairs

DATE Feb. 8, 1990

(This space for Federal or State office use)

PERMIT NO.

APPROVAL DATE

APPROVED BY

TITLE

CONDITIONS OF APPROVAL, IF ANY:

APPROVED
AS AMENDED

MAR 28 1990

Ken Townsend

FOR AREA MANAGER

*See Instructions On Reverse Side

RECEIVED
JUN 10 1964
U.S. AIR FORCE
OFFICE OF THE
JOINT CHIEFS OF STAFF
WASHINGTON, D.C.

Submit to Appropriate
District Office
State Lease - 4 copies
Fee Lease - 3 copies

State of New Mexico
Energy, Minerals and Natural Resources Department

Form C-102
Revised 1-1-89

OIL CONSERVATION DIVISION

P.O. Box 2088
Santa Fe, New Mexico 87504-2088

DISTRICT I
P.O. Box 1980, Hobbs, NM 88240

DISTRICT II
P.O. Drawer DD, Artesia, NM 88210

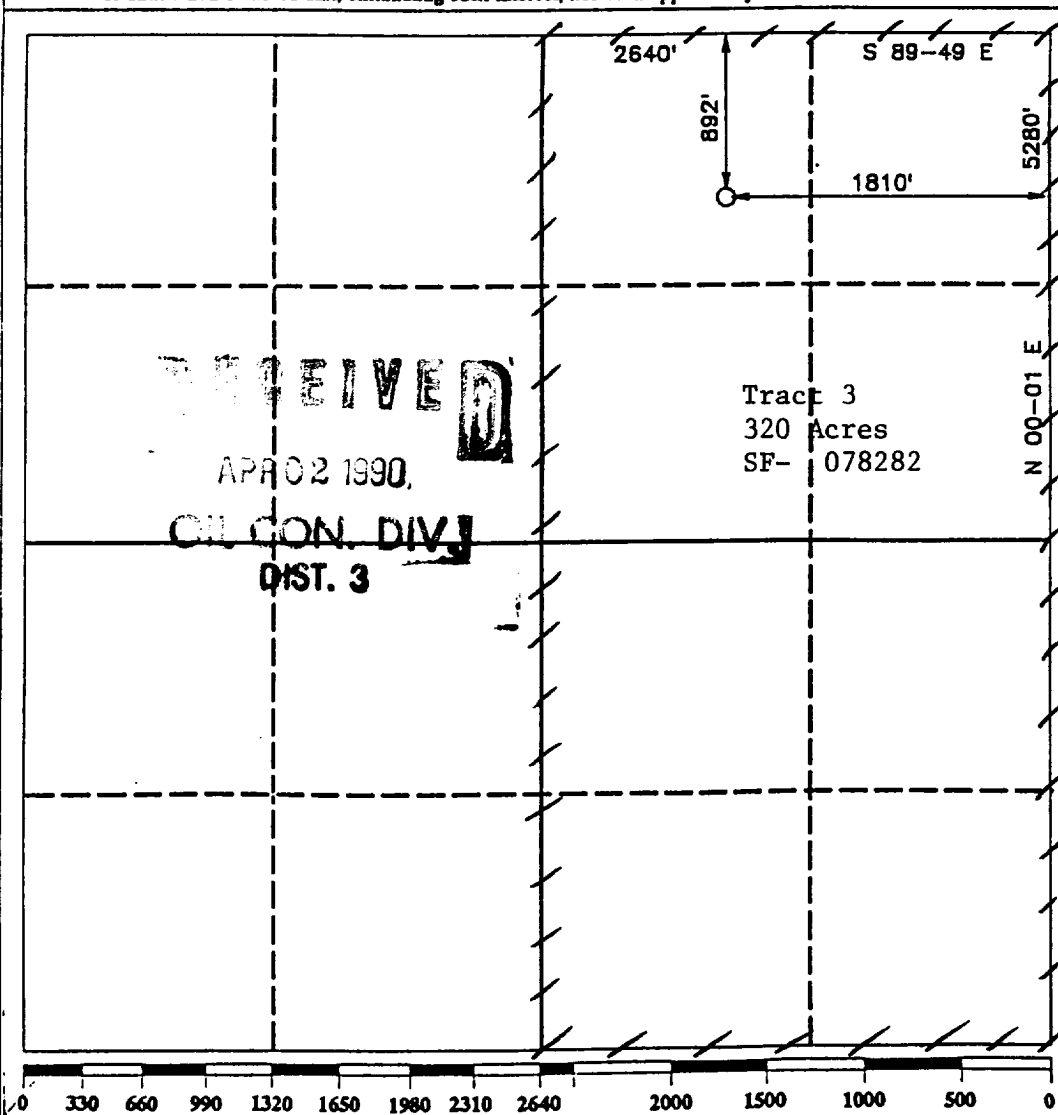
DISTRICT III
1000 Rio Brazos Rd., Aztec, NM 87410

WELL LOCATION AND ACREAGE DEDICATION PLAT

All Distances must be from the outer boundaries of the section

| | | | | | |
|---|---|----------------------------|---|---|--|
| Operator PHILLIPS PETROLEUM | | | Lease SAN JUAN 29-5 UNIT | | Well No. 204 |
| Unit Letter B | Section 19 | Township T.29 N. | Range R.5 W. | County NMPM RIO ARriba COUNTY | |
| Actual Footage Location of Well: 892 feet from the NORTH line and 1810 feet from the EAST line | | | | | |
| Ground level Elev. 6605 | Producing Formation Fruitland | | Pool Basin Fruitland Coal Gas | | Dedicated Acreage: 320 Acres |

1. Outline the acreage dedicated to the subject well by colored pencil or hatchure marks on the plat below.
2. If more than one lease is dedicated to the well, outline each and identify the ownership thereof (both as to working interest and royalty).
3. If more than one lease of different ownership is dedicated to the well, have the interest of all owners been consolidated by communitization, unitization, force-pooling, etc?
☐ Yes ☐ No If answer is "yes" type of consolidation _____
If answer is "no" list the owners and tract descriptions which have actually been consolidated. (Use reverse side of this form if necessary). _____
No allowable will be assigned to the well until all interests have been consolidated (by communitization, unitization, forced-pooling, or otherwise) or until a non-standard unit, eliminating such interest, has been approved by the Division.



OPERATOR CERTIFICATION

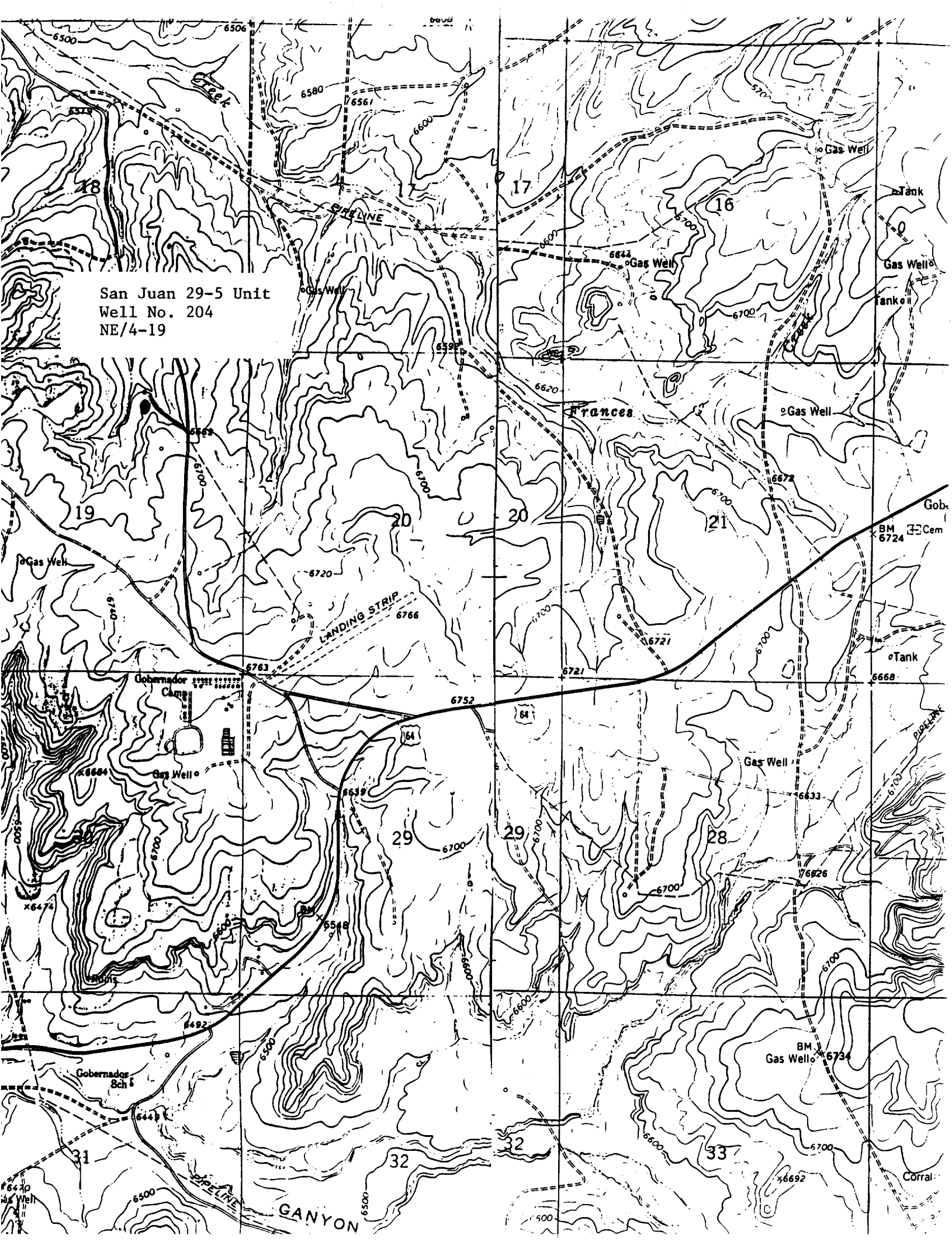
I hereby certify that the information contained herein is true and complete to the best of my knowledge and belief.

Signature
L. M. Sanders
Printed Name
L. M. Sanders
Position
Supv. Regulatory Affairs
Company
Phillips Petroleum Company
Date
February 8, 1990

SURVEYOR CERTIFICATION

I hereby certify that the well location shown on this plat was plotted from field notes of actual surveys made by me or under my supervision, and that the same is true and correct to the best of my knowledge and belief.

Date Surveyed
DECEMBER 20, 1989
Signature & Seal of Professional Surveyor
R. HOWARD DAGGETT
Registered Professional Surveyor
Certificate No.
9679



San Juan 29-5 Unit
Well No. 204
NE/4-19