

UNITED STATES  
DEPARTMENT OF THE INTERIOR  
BUREAU OF LAND MANAGEMENT

SUBMIT IN TRIPLICATE\*  
(Other instructions on  
reverse side)

30-039-24676  
Form approved.  
Budget Bureau No. 1004-0136  
Expires August 31, 1985

APPLICATION FOR PERMIT TO DRILL, DEEPEN, OR PLUG BACK

1a. TYPE OF WORK

DRILL ☒

DEEPEN ☐

PLUG BACK ☐

b. TYPE OF WELL

OIL  
WELL ☐

GAS  
WELL ☒

OTHER

SINGLE  
ZONE ☒

MULTIPLE  
ZONE ☐

2. NAME OF OPERATOR

Phillips Petroleum Company 17654

3. ADDRESS OF OPERATOR

300 W. Arrington, Suite 200, Farmington, N.M. 87401

4. LOCATION OF WELL (Report location clearly and in accordance with any State requirements.)\*

At surface

Unit M, 1145' FSL & 1270' FWL

At proposed prod. zone

Unit M, 1145' FSL & 1270' FWL

14. DISTANCE IN MILES AND DIRECTION FROM NEAREST TOWN OR POST OFFICE\*

25 miles east from Blanco

16. DISTANCE FROM PROPOSED\*

LOCATION TO NEAREST  
PROPERTY OR LEASE LINE, FT.  
(Also to nearest drig. unit line, if any) 29-5 Unit

16. NO. OF ACRES IN LEASE

1160 1280

18. DISTANCE FROM PROPOSED LOCATION\*

TO NEAREST WELL, DRILLING, COMPLETED,  
OR APPLIED FOR, ON THIS LEASE, FT. 111' SE  
from #57

19. PROPOSED DEPTH

3600' (+)

21. ELEVATIONS (Show whether DF, RT, GR, etc.)

6728' (GL Unprepared)

This action is subject to technical and

procedural review pursuant to 43 CFR 3165.3

and appeal pursuant to 43 CFR 3165.3

17. NO. OF ACRES ASSIGNED  
TO THIS WELL

320 Ac. W/2 of Section

20. ROTARY OR CABLE TOOLS

Rotary

22. APPROX. DATE WORK WILL START\*

Upon Approval

SIZE OF HOLE	SIZE OF CASING	WEIGHT PER FOOT	SETTING DEPTH	QUANTITY OF CEMENT
12-1/4"	9-5/8"	36#, K-55	250'	150 sxs, Circ to Surface
8-1/2"	7"	23#, K-55	3370'	500 sxs, Circ to Surface
6-1/8"	5-1/2"	15.5# or 23#	3270-3648'	*

\*If the coal is cleated a 5-1/2", 23#, P-110 liner will be run in the open hole without being cemented.

\*If the coal is not cleated a 5-1/2", 15.5#, K-55 liner will be run, cemented with 100 sxs cement and the well will be fractured.

RECEIVED

APR 02 1990

OIL CON. DIV. I  
DIST. 3

Mud program and BOP equipment - See attached.

IN ABOVE SPACE DESCRIBE PROPOSED PROGRAM: If proposal is to deepen or plug back, give data on present productive zone and proposed new productive zone. If proposal is to drill or deepen directionally, give pertinent data on subsurface locations and measured and true vertical depths. Give blowout preventer program, if any.

SIGNED L.M. Sanders

TITLE Supv. Regulatory Affairs

DATE Feb. 8, 1990

(This space for Federal or State office use)

PERMIT NO. \_\_\_\_\_

APPROVAL DATE \_\_\_\_\_

APPROVED  
AS AMENDED

APPROVED BY \_\_\_\_\_

TITLE \_\_\_\_\_

DATE MAR 28 1990

CONDITIONS OF APPROVAL, IF ANY:

NMOCD

FOR Ken Townsend  
AREA MANAGER

\*See Instructions On Reverse Side

Submit to Appropriate  
District Office  
State Lease - 4 copies  
Fee Lease - 3 copies

State of New Mexico  
Energy, Minerals and Natural Resources Department

Form C-102  
Revised 1-1-89

OIL CONSERVATION DIVISION

DISTRICT I  
P.O. Box 1980, Hobbs, NM 88240

P.O. Box 2088

Santa Fe, New Mexico 87504-2088

DISTRICT II  
P.O. Drawer DD, Artesia, NM 88210

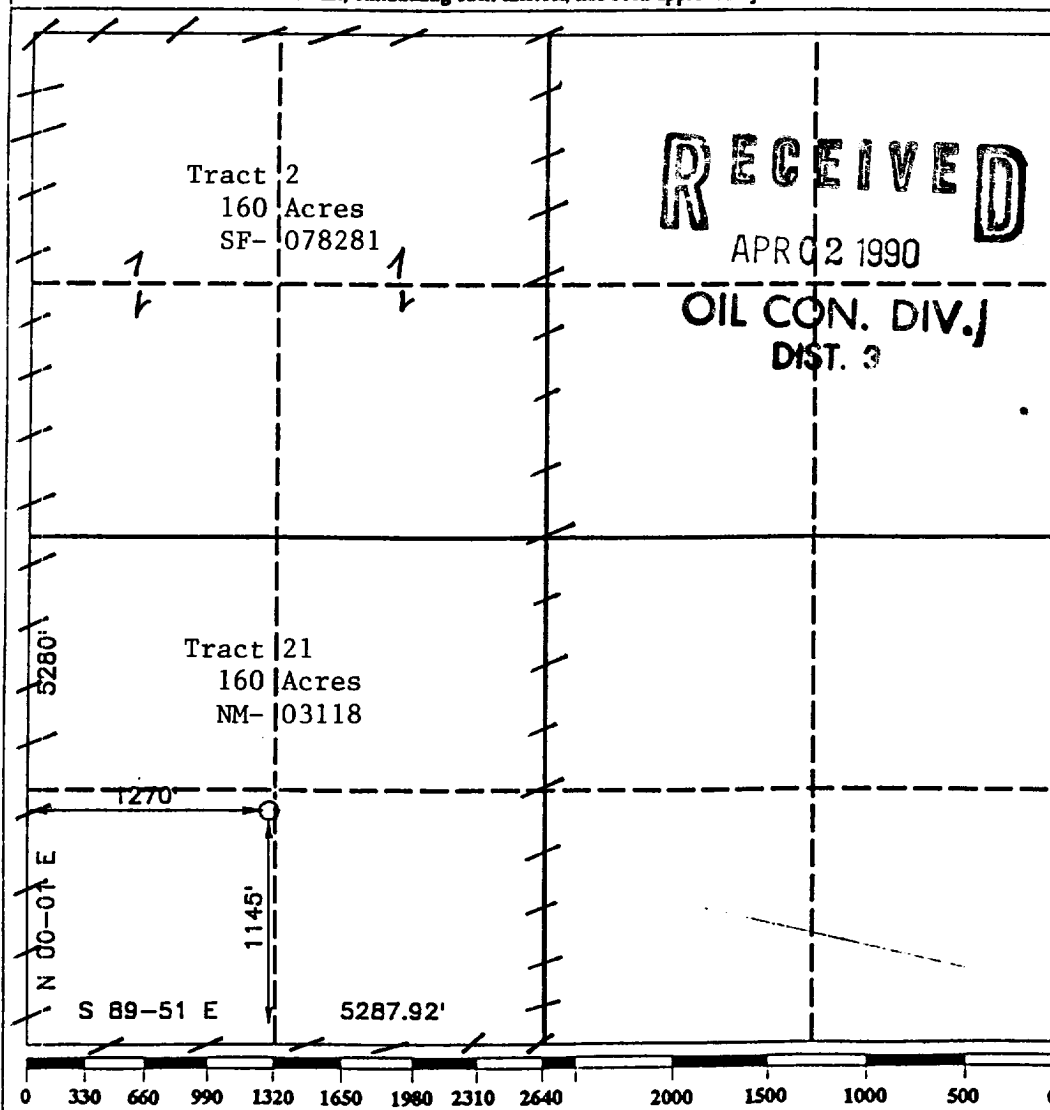
DISTRICT III  
1000 Rio Brazos Rd., Aztec, NM 87410

WELL LOCATION AND ACREAGE DEDICATION PLAT

All Distances must be from the outer boundaries of the section

Operator <b>PHILLIPS PETROLEUM</b>			Lease <b>SAN JUAN 29-5 UNIT</b>		Well No. <b>206</b>
Unit Letter <b>M</b>	Section <b>20</b>	Township <b>T.29 N.</b>	Range <b>R.5 W.</b>	County <b>RIO ARriba COUNTY</b>	
Actual Footage Location of Well: <b>1145</b> feet from the <b>SOUTH</b> line and <b>1270</b> feet from the <b>WEST</b> line					
Ground level Elev. <b>6728</b>		Producing Formation <b>Fruitland</b>		Pool <b>Basin Fruitland Coal Gas</b>	Dedicated Acreage: <b>320</b> Acres

1. Outline the acreage dedicated to the subject well by colored pencil or hatchure marks on the plat below.
2. If more than one lease is dedicated to the well, outline each and identify the ownership thereof (both as to working interest and royalty).
3. If more than one lease of different ownership is dedicated to the well, have the interest of all owners been consolidated by communitization, unitization, force-pooling, etc.?  
☒ Yes ☐ No If answer is "yes" type of consolidation Unitized  
If answer is "no" list the owners and tract descriptions which have actually been consolidated. (Use reverse side of this form if necessary).  
No allowable will be assigned to the well until all interests have been consolidated (by communitization, unitization, forced-pooling, or otherwise) or until a non-standard unit, eliminating such interest, has been approved by the Division.



OPERATOR CERTIFICATION

I hereby certify that the information contained herein is true and complete to the best of my knowledge and belief.

Signature  
*L.M. Sanders*  
Printed Name  
**L. M. Sanders**  
Position  
**Supv. Regulatory Affairs**  
Company  
**Phillips Petroleum Company**  
Date  
**February 8, 1990**

SURVEYOR CERTIFICATION

I hereby certify that the well location shown on this plat was plotted from field notes of actual surveys made by me or under my supervision, and that the same is true and correct to the best of my knowledge and belief.

Date Surveyed  
**DECEMBER 13, 1989**  
Signature & Seal of Professional Surveyor  
**R. HOWARD DAGGETT**  
Registered Professional  
Certificate No.  
**9679**

