

UNITED STATES  
DEPARTMENT OF THE INTERIOR  
BUREAU OF LAND MANAGEMENT

SUBMIT IN TRIPLICATE\*  
(Other instructions on  
reverse side)

30-039-24677  
Form approved.  
Budget Bureau No. 1004-0136  
Expires August 31, 1985

APPLICATION FOR PERMIT TO DRILL, DEEPEN, OR PLUG BACK

1a. TYPE OF WORK

DRILL ☒

DEEPEN ☐

PLUG BACK ☐

b. TYPE OF WELL

OIL  
WELL ☐

GAS  
WELL ☒

OTHER

SINGLE  
ZONE ☒

MULTIPLE  
ZONE ☐

2. NAME OF OPERATOR

Phillips Petroleum Company

3. ADDRESS OF OPERATOR

300 W. Arrington, Suite 200, Farmington, N.M. 87401

4. LOCATION OF WELL (Report location clearly and in accordance with any State requirements.)\*

At surface

Unit M, 830' FSL & 975' FWL

At proposed prod. zone

Unit M, 830' FSL & 975' FWL

14. DISTANCE IN MILES AND DIRECTION FROM NEAREST TOWN OR POST OFFICE\*

25 miles east from Blanco

10. DISTANCE FROM PROPOSED\*

LOCATION TO NEAREST  
PROPERTY OR LEASE LINE, FT. 11,535' FWL of  
(Also to nearest drlg. unit line, if any) 29-5 Unit

18. DISTANCE FROM PROPOSED LOCATION\*

TO NEAREST WELL, DRILLING, COMPLETED, 160' SW  
OR APPLIED FOR, ON THIS LEASE, FT. from #16

16. NO. OF ACRES IN LEASE

1160.28

19. PROPOSED DEPTH

3700' (+) 3650'

17. NO. OF ACRES ASSIGNED  
TO THIS WELL

320 Ac. W/2 of Section

20. ROTARY OR CABLE TOOLS

Rotary

21. ELEVATIONS (Show whether DF, RT, GR, etc.)

6702' (GL Unprepared)

22. APPROX. DATE WORK WILL START\*

Upon Approval

23.

PROPOSED CASING AND CEMENTING PROGRAM

SIZE OF HOLE	SIZE OF CASING	WEIGHT PER FOOT	SETTING DEPTH	QUANTITY OF CEMENT
12-1/4"	9-5/8"	36#, K-55	250'	150 sxs, Circ to Surface
8-1/2"	7"	23#, K-55	3345'	500 sxs, Circ to Surface
6-1/8"	5-1/2"	15.5# or 23#	3245-3650'	*

\*If the coal is cleated a 5-1/2", 23#, P-110 liner will be run in the open hole without being cemented.

\*If the coal is not cleated a 5-1/2", 15.5#, K-55 liner will be run, cemented with 100 sxs cement and the well will be fractured.

Mud program and BOP equipment - See attached.

IN ABOVE SPACE DESCRIBE PROPOSED PROGRAM: If proposal is to deepen or plug back, give data on present productive zone and proposed new productive zone. If proposal is to drill or deepen directionally, give pertinent data on subsurface locations and measured and true vertical depths. Give blowout preventer program, if any.

24.

SIGNED

*L.M. Sanders*

TITLE Supv. Regulatory Affairs

(This space for Federal or State office use)

PERMIT NO.

APPROVAL DATE

APPROVED BY

CONDITIONS OF APPROVAL, IF ANY:

TITLE

Feb. 8, 1990

APPROVED  
AS AMENDED

MAR 28 1990

FOR AREA MANAGER

\*See Instructions On Reverse Side

Submit to Appropriate  
District Office  
State Lease - 4 copies  
Fee Lease - 3 copies

State of New Mexico  
Energy, Minerals and Natural Resources Department

Form C-102  
Revised 1-1-89

OIL CONSERVATION DIVISION

P.O. Box 2088

Santa Fe, New Mexico 87504-2088

RECEIVED  
DISTRICT 3 ROOM  
90 FEB - 9 AM 10:17

DISTRICT I

P.O. Box 1980, Hobbs, NM 88240

DISTRICT II

P.O. Drawer DD, Artesia, NM 88210

DISTRICT III

1000 Rio Brazos Rd., Aztec, NM 87410

WELL LOCATION AND ACREAGE DEDICATION PLAT

All Distances must be from the outer boundaries of the section

Operator <b>PHILLIPS PETROLEUM</b>			Lease <b>SAN JUAN 29-5 UNIT</b>		Well No. <b>208</b>
Unit Letter <b>M</b>	Section <b>21</b>	Township <b>T.29 N.</b>	Range <b>R.5 W.</b>	County <b>NMPM RIO ARriba COUNTY</b>	
Actual Footage Location of Well: <b>830</b> feet from the <b>SOUTH</b> line and <b>975</b> feet from the <b>WEST</b> line					
Ground level Elev. <b>6702</b>	Producing Formation <b>Fruitland</b>		Pool <b>Basin Fruitland Coal Gas</b>		Dedicated Acreage: <b>320</b> Acres

1. Outline the acreage dedicated to the subject well by colored pencil or hatchure marks on the plat below.

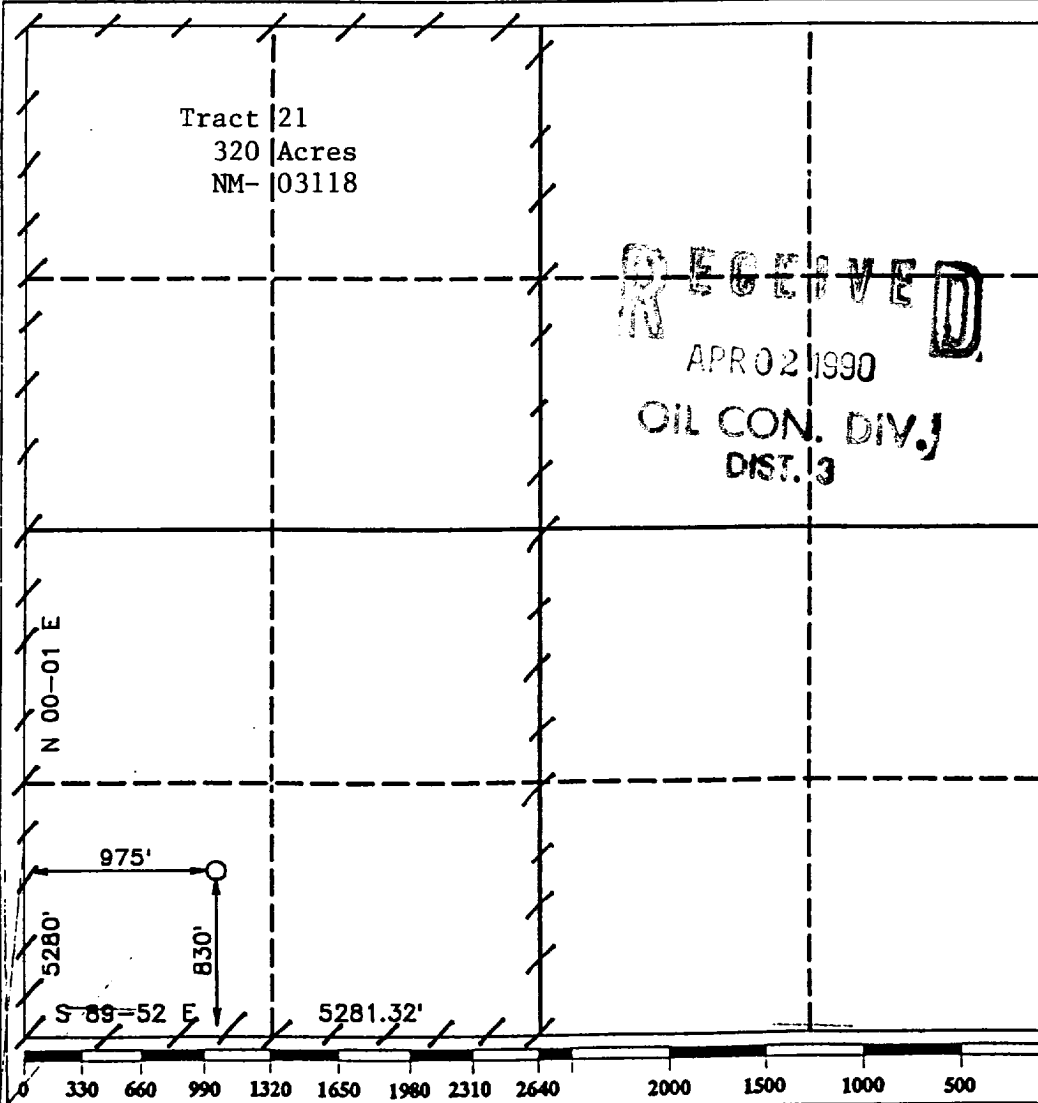
2. If more than one lease is dedicated to the well, outline each and identify the ownership thereof (both as to working interest and royalty).

3. If more than one lease of different ownership is dedicated to the well, have the interest of all owners been consolidated by communitization, unitization, force-pooling, etc.?

☐ Yes ☐ No If answer is "yes" type of consolidation \_\_\_\_\_

If answer is "no" list the owners and tract descriptions which have actually been consolidated. (Use reverse side of this form if necessary.) \_\_\_\_\_

No allowable will be assigned to the well until all interests have been consolidated (by communitization, unitization, forced-pooling, or otherwise) or until a non-standard unit, eliminating such interest, has been approved by the Division.



OPERATOR CERTIFICATION

I hereby certify that the information contained herein is true and complete to the best of my knowledge and belief.

Signature

Printed Name

L. M. Sanders

Position

Supv. Regulatory Affairs

Company

Phillips Petroleum Company

Date

February 8, 1990

SURVEYOR CERTIFICATION

I hereby certify that the well location shown on this plat was plotted from field notes of actual surveys made by me or under my supervision, and that the same is true and correct to the best of my knowledge and belief.

Date Surveyed

DECEMBER 18, 1989

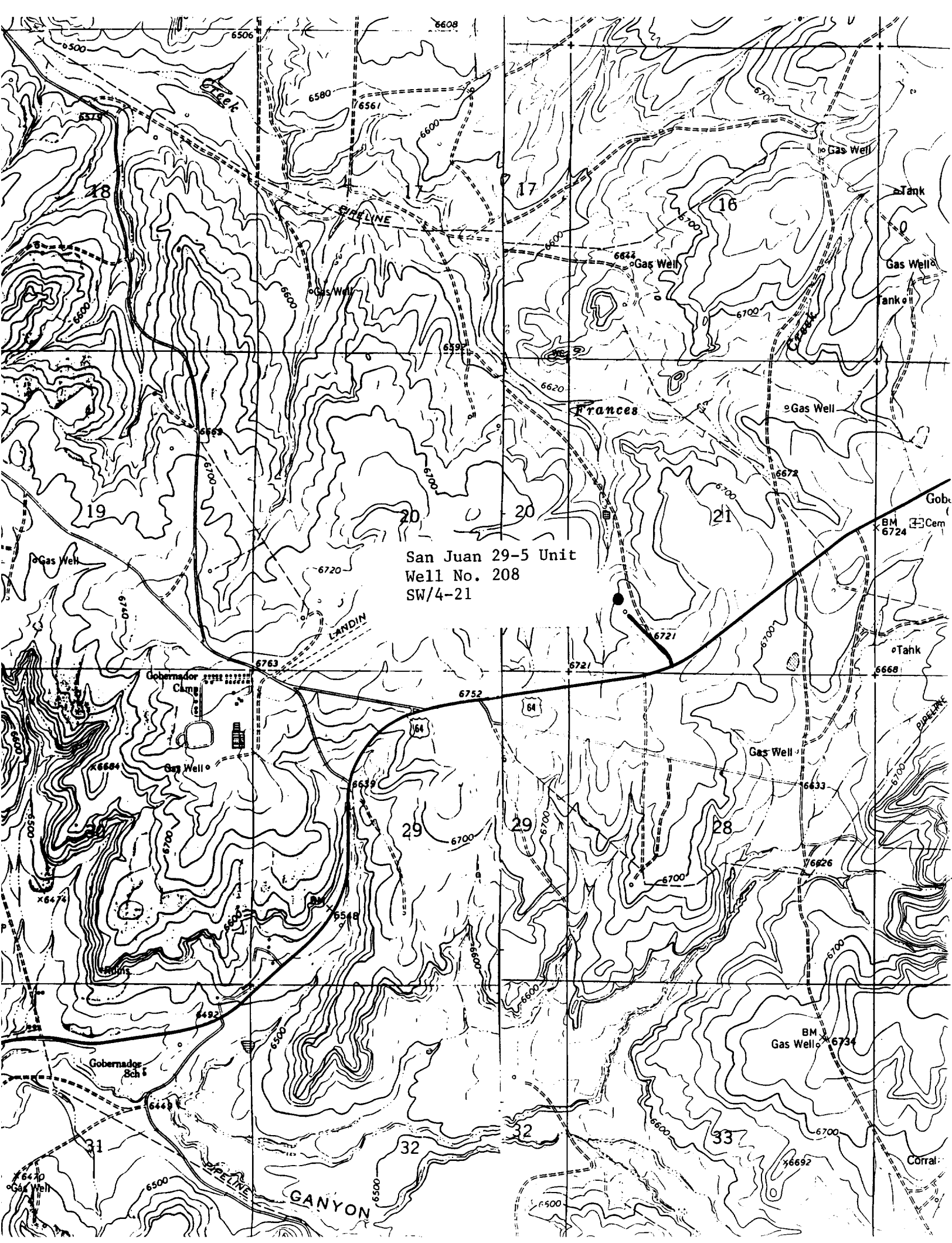
Signature & Seal of  
Professional Surveyor

HOWARD DAGGETT

PROFESSIONAL LAND SURVEYOR

Certificate No. Land Surveyor

9679



San Juan 29-5 Unit #208

M-21-29N-05W

PHILLIPS PETROLEUM CO.

F

30-039-24677

04-02-90

F. Loc. 830/S; 975/W Elev. 6702 GL Spd. \_\_\_\_\_ Comp. \_\_\_\_\_ TD \_\_\_\_\_ PB \_\_\_\_\_  
 Cu. ft. \_\_\_\_\_ Cu. ft. \_\_\_\_\_  
 Casing S. \_\_\_\_\_ @ \_\_\_\_\_ W \_\_\_\_\_ Sx. Int. \_\_\_\_\_ @ \_\_\_\_\_ W \_\_\_\_\_ Sx. T. \_\_\_\_\_ @ \_\_\_\_\_  
 Csg. Perf. \_\_\_\_\_ Prod. Stim. \_\_\_\_\_

T Gas  
R  
A  
N  
S

Grav. \_\_\_\_\_ 1st Del. Gas \_\_\_\_\_  
 I.P. \_\_\_\_\_ BO/D \_\_\_\_\_ MCF/D After \_\_\_\_\_ Hrs. SICP \_\_\_\_\_ PSI After \_\_\_\_\_ Days GOR \_\_\_\_\_ 1st Del. Oil \_\_\_\_\_

TOPS		NiTD	X	Well Log	TEST DATA							Ref.No.
Ojo Alamo		C-103		Plat X	Schd.	PC	Q	PW	PD	D		
Kirtland		C-104		Electric Log								
Fruitland				C-122								
Pictured Cliffs		Ditr		Dfa								
Chacra		Datr		Dac								
Cliff House												
Menefee												
Point Lookout												
Mancos												
Gallup												
Greenhorn												
Dakota												
Entrada												
				Acres W/320								

P  
o  
o

BasinFrCoal Co. RA S 21 T 29N R 05W U M Oper. Phillips Petroleum Co. Lse. San Juan 29-5 Unit No. 208



# United States Department of the Interior

BUREAU OF LAND MANAGEMENT  
FARMINGTON RESOURCE AREA  
1235 LAPLATA HIGHWAY  
FARMINGTON, NEW MEXICO 87401



IN REPLY REFER TO:

SF-078282 et al. (WC)  
3162.3-1(F) (019)

JUN. 20 1991

**RECEIVED**  
JUN 21 1991  
OIL CON. DIV.  
DIST. 3

Phillips Petroleum Company  
5525 Highway 64, NBU 3004  
Farmington, NM 87401

Gentlemen:

Enclosed are your Applications for Permit to Drill (APDs) well Nos.:

1. No. 204 ✓ San Juan 29-5 Unit, NW/4NE/4, sec. 19, T. 29 N., R. 5 W., Rio Arriba County, New Mexico, SF-078282.
2. No. 205 ✓ San Juan 29-5 Unit, NW/4NE/4, sec. 20, T. 29 N., R. 5 W., Rio Arriba County, New Mexico, SF-078281.
3. No. 208 ✓ San Juan 29-5 Unit, SW/4SW/4, sec. 21, T. 29 N., R. 5 W., Rio Arriba County, New Mexico, NM-03188.
4. No. 209 ✓ San Juan 29-5 Unit, SE/4NE/4, sec. 29, T. 29 N., R. 5 W., Rio Arriba County, New Mexico, SF-078282.
5. No. 210 ✓ San Juan 29-5 Unit, SE/4SW/4, sec. 29, T. 29 N., R. 5 W., Rio Arriba County, New Mexico, SF-078282.
6. No. 211 ✓ San Juan 29-5 Unit, SE/4NE/4, sec. 30, T. 29 N., R. 5 W., Rio Arriba County, New Mexico, SF-079851.
7. No. 212 ✓ San Juan 29-5 Unit, SE/4SW/4, sec. 30, T. 29 N., R. 5 W., Rio Arriba County, New Mexico, SF-079851.
8. No. 205 ✓ San Juan 32-7 Unit, SE/4SW/4, sec. 22, T. 32 N., R. 7 W., San Juan County, New Mexico, SF-078459.
9. No. 206 ✓ San Juan 32-7 Unit, SW/4NE/4, sec. 27, T. 32 N., R. 7 W., San Juan County, New Mexico, SF-078472.

As discussed with Gail Bearden of your company on June 10, 1991, the subject APDs are rescinded and returned due to drilling not being commenced within one year of the approval date.

You are required to request surface rehabilitation instructions from this office if construction activities occurred on the referenced drill sites. If this office does not receive comment within 30 days, we will presume that no

**ABANDONED LOCATION**

construction occurred and proceed accordingly. Later discovery that construction activities have in fact occurred, may result in assessment of liquidated damages.

Sincerely,

/s/ Duane Spencer

FOR John L. Keller  
Chief, Branch of Mineral Resources

9 Enclosures

cc:

New Mexico Oil Conservation Division, 1000 Rio Brazos Rd., Aztec, NM 87410