

UNITED STATES  
DEPARTMENT OF THE INTERIOR  
BUREAU OF LAND MANAGEMENT

APPLICATION FOR PERMIT TO DRILL, DEEPEN, OR PLUG BACK

1a. TYPE OF WORK

DRILL ☒

DEEPEN ☐

PLUG BACK ☐

b. TYPE OF WELL

OIL  
WELL ☐

GAS  
WELL ☒

OTHER

SINGLE  
ZONE ☒

MULTIPLE  
ZONE ☐

2. NAME OF OPERATOR

Phillips Petroleum Company

3. ADDRESS OF OPERATOR

300 W. Arrington, Suite 200, Farmington, N.M. 87401

4. LOCATION OF WELL (Report location clearly and in accordance with any State requirements.)

At surface

Unit H, 1455' FNL & 825' FEL

At proposed prod. zone

Unit H, 1455' FNL & 825' FEL

14. DISTANCE IN MILES AND DIRECTION FROM NEAREST TOWN OR POST OFFICE\*

25 miles east from Blanco

10. DISTANCE FROM PROPOSED\*

LOCATION TO NEAREST

PROPERTY OR LEASE LINE, FT.

(Also to nearest drlg. unit line, if any)

4464' FWL of

29-5 Unit

18. DISTANCE FROM PROPOSED LOCATION\*

TO NEAREST WELL, DRILLING, COMPLETED,

OR APPLIED FOR, ON THIS LEASE, FT.

196' NW

from #13

16. NO. OF ACRES IN LEASE

560

19. PROPOSED DEPTH

3700' (+)

17. NO. OF ACRES ASSIGNED  
TO THIS WELL

320 Ac. E/2 of Section

20. ROTARY OR CABLE TOOLS

Rotary

21. ELEVATIONS (Show whether DF, RT, GR, etc.)

6752' (GL Unprepared)

This action is subject to technical and

22. APPROX. DATE WORK WILL START\*

Upon Approval

23. PROPOSED CASING AND CEMENTING PROGRAM  
and appear pursuant to 43 CFR 3165.3  
and appear pursuant to 43 CFR 3165.4.

SIZE OF HOLE	SIZE OF CASING	WEIGHT PER FOOT	SETTING DEPTH	QUANTITY OF CEMENT
12-1/4"	9-5/8"	36#, K-55	250'	150 sxs, Circ to Surface
8-1/2"	7"	23#, K-55	3415'	500 sxs, Circ to Surface
6-1/8"	5-1/2"	15.5# or 23#	3345-3670'	*

\*If the coal is cleated a 5-1/2", 23#, P-110 liner will be run in the open hole without being cemented.

\*If the coal is not cleated a 5-1/2", 15.5#, K-55 liner will be run, cemented with 100 sxs cement and the well will be fractured.

Mud program and BOP equipment - See attached.

RECEIVED  
APR 16 1990  
OIL CON. DIV.  
DIST. 3

IN ABOVE SPACE DESCRIBE PROPOSED PROGRAM: If proposal is to deepen or plug back, give data on present productive zone and proposed new productive zone. If proposal is to drill or deepen directionally, give pertinent data on subsurface locations and measured and true vertical depths. Give blowout preventer program, if any.

24.

SIGNED L.M. Sanders

TITLE Supv. Regulatory Affairs

DATE Feb. 8, 1990

(This space for Federal or State office use)

AS AMENDED

PERMIT NO. \_\_\_\_\_

APPROVAL DATE \_\_\_\_\_

APPROVED BY \_\_\_\_\_

TITLE \_\_\_\_\_

CONDITIONS OF APPROVAL, IF ANY:

AREA MANAGER

NMOOD

\*See Instructions On Reverse Side

RECEIVED  
APR 18 1950  
OIL CON. DIV.  
DIST. 3

Submit to Appropriate  
District Office  
State Lease - 4 copies  
Fee Lease - 3 copies

State of New Mexico  
Energy, Minerals and Natural Resources Department

Form C-102  
Revised 1-1-89

OIL CONSERVATION DIVISION

P.O. Box 2088  
Santa Fe, New Mexico 87504-2088

DISTRICT I  
P.O. Box 1980, Hobbs, NM 88240

DISTRICT II  
P.O. Drawer DD, Artesia, NM 88210

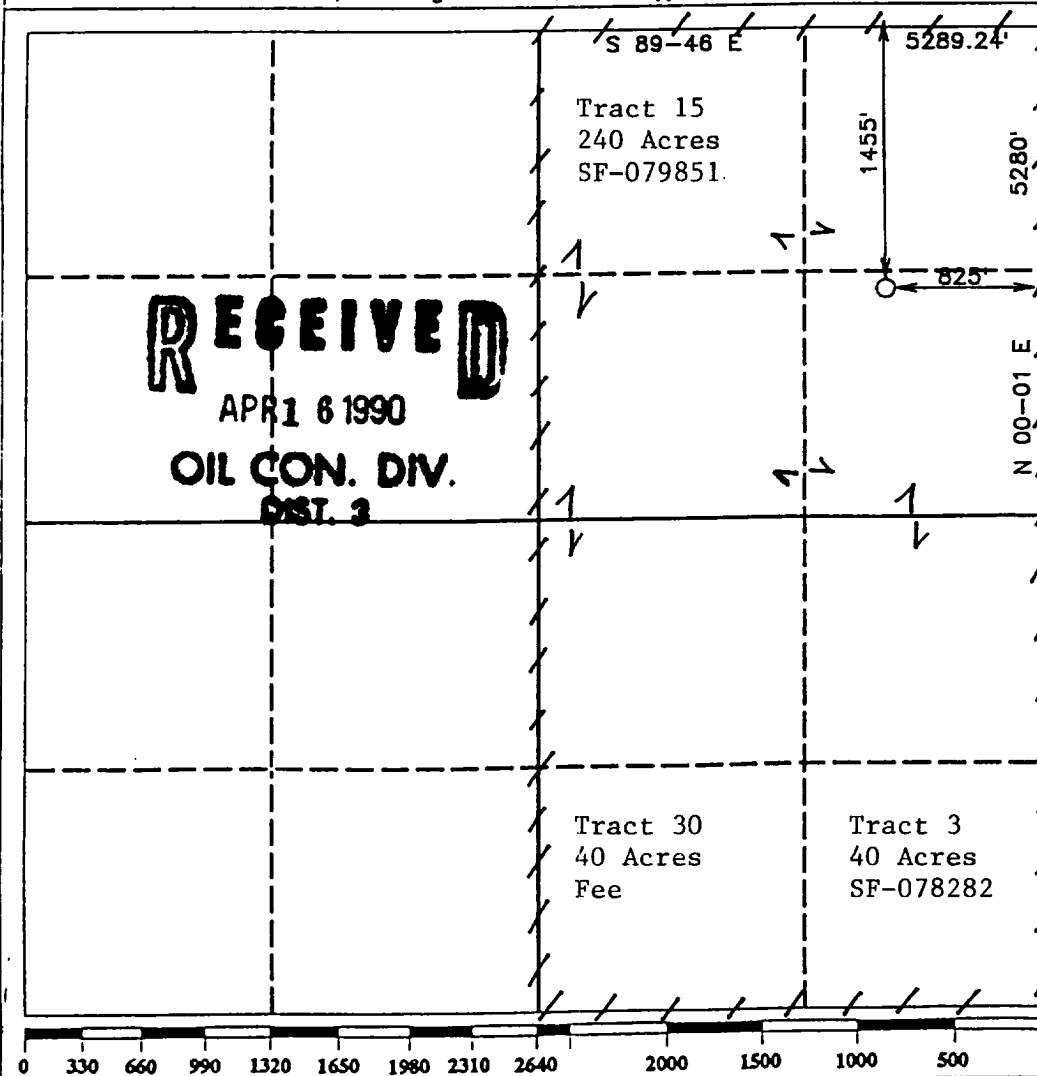
DISTRICT III  
1000 Rio Brazos Rd., Aztec, NM 87410

WELL LOCATION AND ACREAGE DEDICATION PLAT

All Distances must be from the outer boundaries of the section

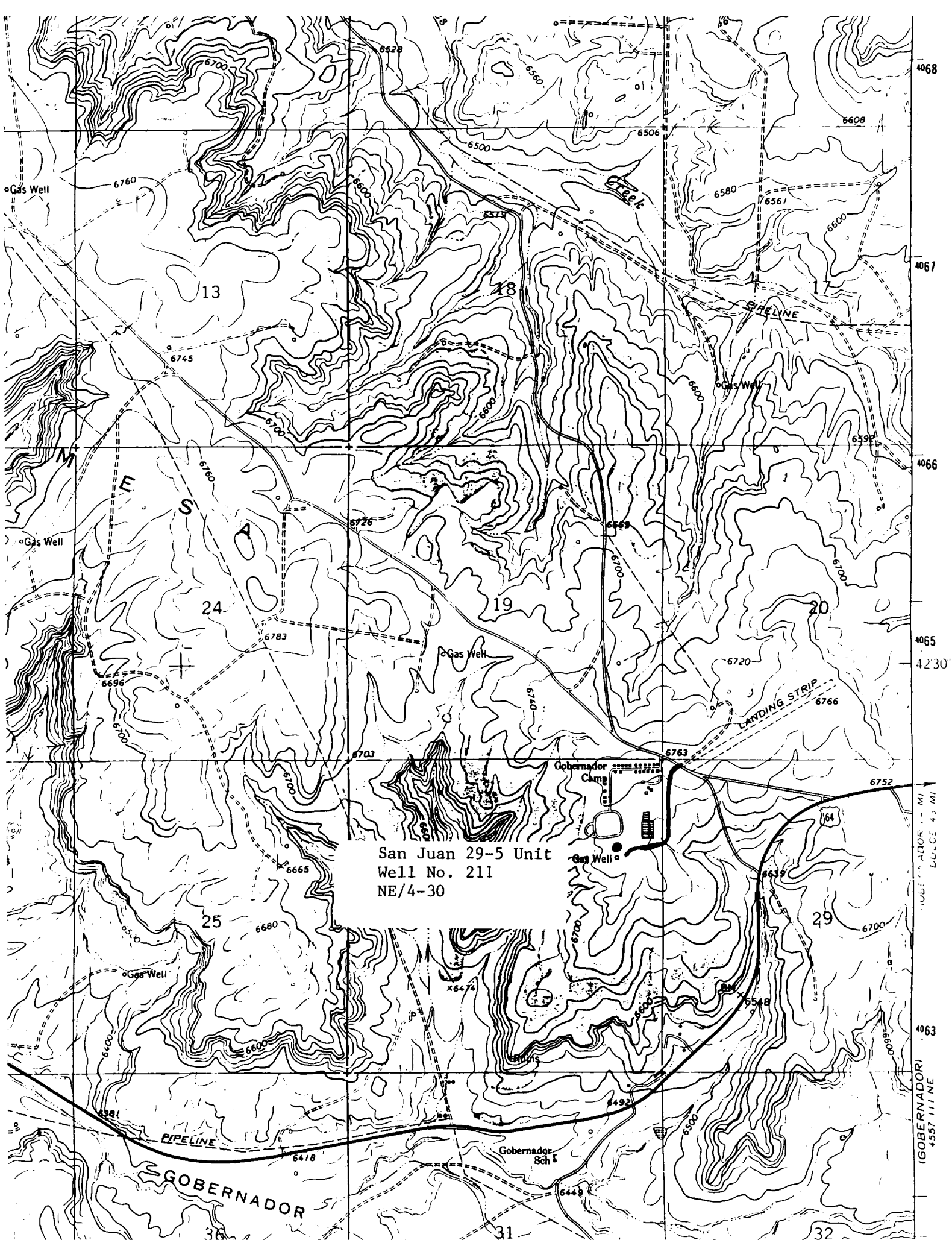
Operator <b>PHILLIPS PETROLEUM</b>		Lease <b>SAN JUAN 29-5 UNIT</b>		Well No. <b>211</b>
Unit Letter <b>H</b>	Section <b>30</b>	Township <b>T.29 N.</b>	Range <b>R.5 W.</b>	County <b>RIO ARriba COUNTY</b>
Actual Footage Location of Well: <b>1455</b> feet from the <b>NORTH</b> line and <b>825</b> feet from the <b>EAST</b> line				
Ground level Elev. <b>6752</b>	Producing Formation <b>Fruitland</b>	Pool <b>Basin Fruitland Coal Gas</b>	Dedicated Acreage: <b>320</b> Acres	

- Outline the acreage dedicated to the subject well by colored pencil or hatchure marks on the plat below.
- If more than one lease is dedicated to the well, outline each and identify the ownership thereof (both as to working interest and royalty).
- If more than one lease of different ownership is dedicated to the well, have the interest of all owners been consolidated by communitization, unitization, force-pooling, etc.?  
☒ Yes ☐ No If answer is "yes" type of consolidation Unitized  
If answer is "no" list the owners and tract descriptions which have actually been consolidated. (Use reverse side of this form if necessary.)  
No allowable will be assigned to the well until all interests have been consolidated (by communitization, unitization, forced-pooling, or otherwise) or until a non-standard unit, eliminating such interest, has been approved by the Division.



<b>OPERATOR CERTIFICATION</b> I hereby certify that the information contained herein is true and complete to the best of my knowledge and belief.	
Signature <i>L. M. Sanders</i>	Printed Name <b>L. M. Sanders</b>
Position <b>Supv. Regulatory Affairs</b>	
Company <b>Phillips Petroleum Company</b>	
Date <b>February 8, 1990</b>	
<b>SURVEYOR CERTIFICATION</b> I hereby certify that the well location shown on this plat was plotted from field notes of actual surveys made by me or under my supervision, and that the same is true and correct to the best of my knowledge and belief.	
Date Surveyed <b>DECEMBER 13, 1989</b>	
Signature & Seal of Professional Surveyor <i>R. Howard Daggett</i> <b>R. HOWARD DAGGETT</b> PROFESSIONAL LAND SURVEYOR	
Registered Professional Certificate No. <b>9679</b>	

**RECEIVED**  
OIL CON. DIV.  
OCT. 3  
APR 1 8 1930



San Juan 29-5 Unit  
Well No. 211  
NE/4-30

GOVERNADOR

GOVERNADOR  
4557 111 NE