

Submit to Appropriate
District Office
State Lease - 6 copies
Fee Lease - 5 copies

State of New Mexico
Energy, Minerals and Natural Resources Department

Form C-101
Revised 1-1-89

OIL CONSERVATION DIVISION

P.O. Box 2088
Santa Fe, New Mexico 87504-2088

DISTRICT I
P.O. Box 1980, Hobbs, NM 88240

DISTRICT II
P.O. Drawer DD, Artesia, NM 88210

DISTRICT III
1000 Rio Brazos Rd., Aztec, NM 87410

API NO. (assigned by OCD on New Wells)

30-039-24730

5. Indicate Type of Lease

STATE ☐

FEE ☒

6. State Oil & Gas Lease No.

APPLICATION FOR PERMIT TO DRILL, DEEPEN, OR PLUG BACK

1a. Type of Work:

DRILL ☒

RE-ENTER ☐

DEEPEN ☐

PLUG BACK ☐

b. Type of Well:

OIL
WELL ☐

GAS
WELL ☒

OTHER ☐

SINGLE
ZONE ☒

MULTIPLE
ZONE ☐

7. Lease Name or Unit Agreement Name

San Juan 29-6 Unit

2. Name of Operator

Phillips Petroleum Company

8. Well No.

242

3. Address of Operator

300 W. Arrington, Suite 200, Farmington, N.M. 87401

9. Pool name or Wildcat

Basin Fruitland Coal Gas

4. Well Location

Unit Letter K : 2002 Feet From The south Line and 1834 Feet From The west Line

Section 19 Township 29-N Range 6-W NMPM Rio Arriba County

10. Proposed Depth

3114'

11. Formation

Fruitland

12. Rotary or C.T.

Rotary

13. Elevations (Show whether DF, RT, GR, etc.)

6261' (GL Unprepared)

14. Kind & Status Plug Bond

Blanket

15. Drilling Contractor

Advise Later

16. Approx. Date Work will start

Upon Approval

17.

PROPOSED CASING AND CEMENT PROGRAM

W/320

| SIZE OF HOLE | SIZE OF CASING | WEIGHT PER FOOT | SETTING DEPTH | SACKS OF CEMENT | EST. TOP |
|--------------|----------------|-----------------|---------------|-----------------|-----------------|
| 12-1/4" | 9-5/8" | 36#, K-55 | 250' | 200 Sxs | Circ to Surface |
| 8-3/4" | 7" | 23#, K-55 | 2970' | 600 Sxs | Circ to Surface |
| 6-1/8" | 5-1/2" | 15.5# or 23# | 2870'-3114' | | * |

*If the coal is cleated a 5-1/2", 23#, P-110 liner will be run in the open hole without being cemented.

*If the coal is not cleated a 5-1/2", 15.5#, K-55 liner will be run, cemented with 100 sxs cement and the well fractured.

APPROVAL EXPIRES 10-26-90
UNLESS DRILLING IS COMMENCED.
SPUD NOTICE MUST BE SUBMITTED
WITHIN 10 DAYS.

Use mud additives as required for control.

BOP Equipment: See attached schematic (Fig. 7-9 or 7-10)

IN ABOVE SPACE DESCRIBE PROPOSED PROGRAM: IF PROPOSAL IS TO DEEPEN OR PLUG BACK, GIVE DATA ON PRESENT PRODUCTIVE ZONE AND PROPOSED NEW PRODUCTIVE ZONE. GIVE BLOWOUT PREVENTER PROGRAM, IF ANY.

I hereby certify that the information above is true and complete to the best of my knowledge and belief.

SIGNATURE L. M. Sanders TITLE Supv. Regulatory Affairs DATE April 24, 1990

TYPE OR PRINT NAME L. M. Sanders

TELEPHONE NO.

(This space for State Use)

APPROVED BY [Signature] TITLE SUPERVISOR DISTRICT 3 DATE APR 26 1990

CONDITIONS OF APPROVAL, IF ANY:

RECEIVED

APR 25 1990

**OIL CON. DIV
DIST. 3**

Submit to Appropriate
District Office
State Lease - 4 copies
Fee Lease - 3 copies

State of New Mexico
Energy, Minerals and Natural Resources Department

Form C-102
Revised 1-1-89

OIL CONSERVATION DIVISION

P.O. Box 2088
Santa Fe, New Mexico 87504-2088

DISTRICT I
P.O. Box 1980, Hobbs, NM 88240

DISTRICT II
P.O. Drawer DD, Artesia, NM 88210

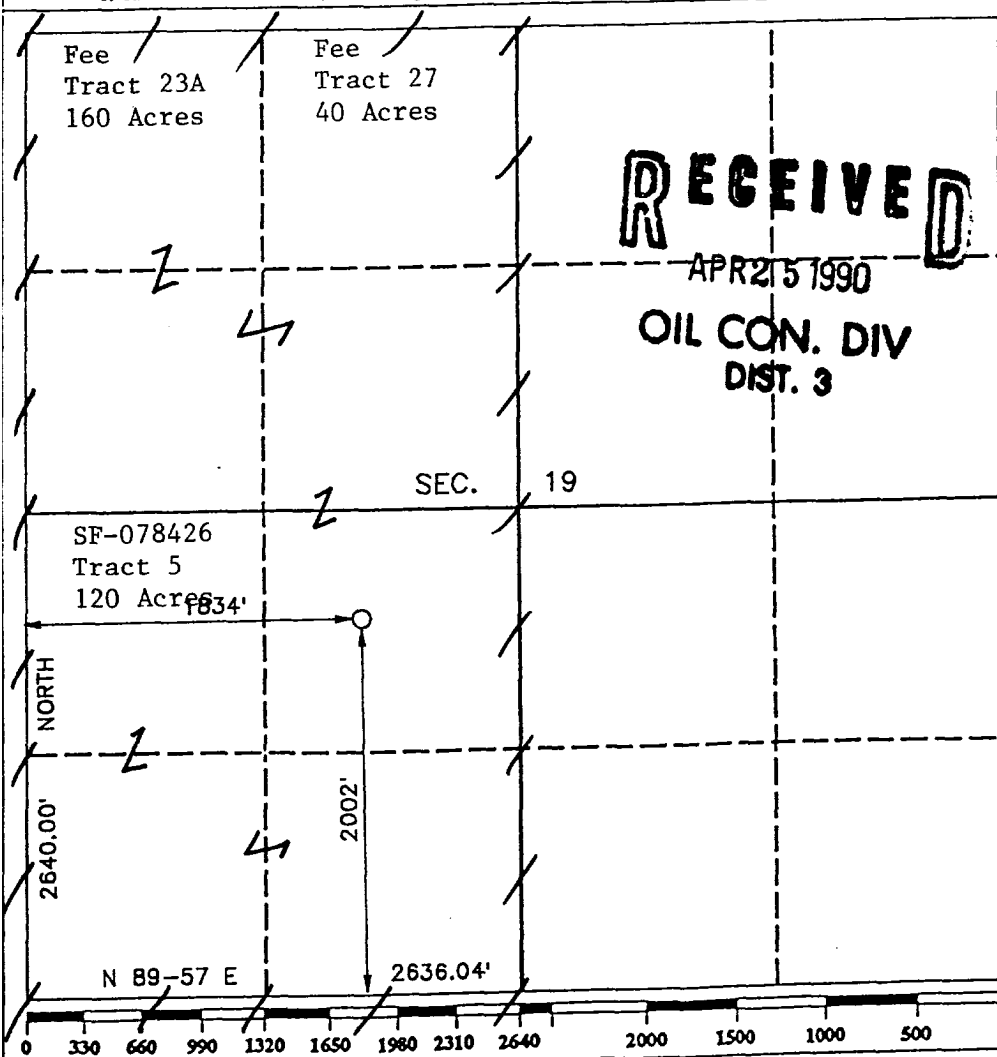
DISTRICT III
1000 Rio Brazos Rd., Aztec, NM 87410

WELL LOCATION AND ACREAGE DEDICATION PLAT

All Distances must be from the outer boundaries of the section

| | | | | | |
|--|---|----------------------------|-------------------------------------|------------------------------------|--|
| Operator PHILLIPS PETROLEUM | | | Lease SAN JUAN 29-6 UNIT | | Well No. 242 |
| Unit Letter K | Section 19 | Township T.29 N. | Range R.6 W. | County RIO ARriba COUNTY | |
| Actual Footage Location of Well: 2002 feet from the SOUTH line and 1834 feet from the WEST line | | | | | |
| Ground level Elev. 6261 | Producing Formation Fruitland | | Pool Basin Fruitland Coal | | Dedicated Acreage: 320 Acres |

1. Outline the acreage dedicated to the subject well by colored pencil or hatchure marks on the plat below.
2. If more than one lease is dedicated to the well, outline each and identify the ownership thereof (both as to working interest and royalty).
3. If more than one lease of different ownership is dedicated to the well, have the interest of all owners been consolidated by communization, unitization, force-pooling, etc.?
☒ Yes ☐ No If answer is "yes" type of consolidation Unitized
If answer is "no" list the owners and tract descriptions which have actually been consolidated. (Use reverse side of this form if necessary.)
No allowable will be assigned to the well until all interests have been consolidated (by communization, unitization, forced-pooling, or otherwise) or until a non-standard unit, eliminating such interest, has been approved by the Division.



OPERATOR CERTIFICATION

I hereby certify that the information contained herein is true and complete to the best of my knowledge and belief.

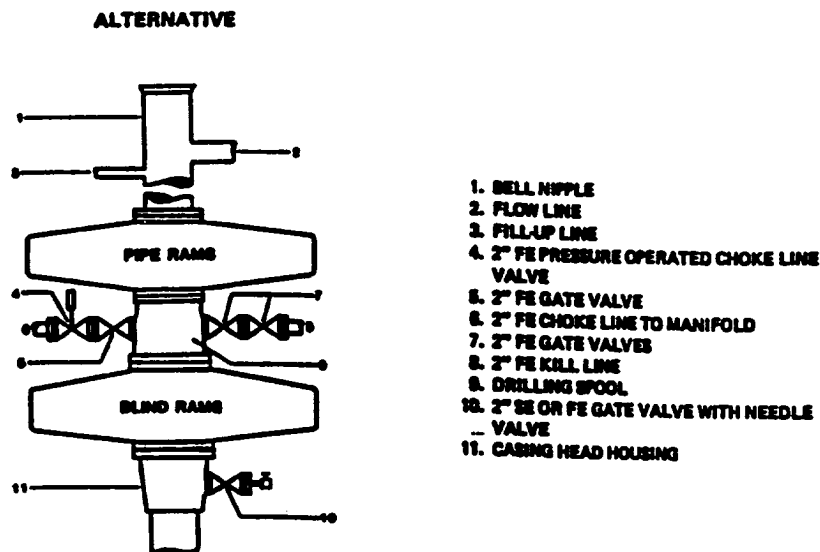
Signature L. M. Sanders
Printed Name L. M. Sanders
Position Supv., Regulatory Affairs
Company Phillips Petroleum Company
Date April 24, 1990

SURVEYOR CERTIFICATION

I hereby certify that the well location shown on this plat was plotted from field notes of actual surveys made by me or under my supervision, and that the same is true and correct to the best of my knowledge and belief.

Date Surveyed APR 24 1990
Signature of Seal of Professional Surveyor R. HOWARD DAGGETT
Certificate No. 9678
Registered Professional Land Surveyor

1971 12 24
1971 12 24
OIL CONT. DIV.
DIST. 3



NOTE: THE DRILLING SPOOL MAY BE LOCATED BELOW BOTH SETS OF RAMS IF A DOUBLE PREVENTER IS USED AND IT DOES NOT HAVE SUITABLE OUTLETS BETWEEN RAMS

Figure 7-9. Standard Hydraulic Blowout Preventer Assembly
3 M Working Pressure Alternative 1

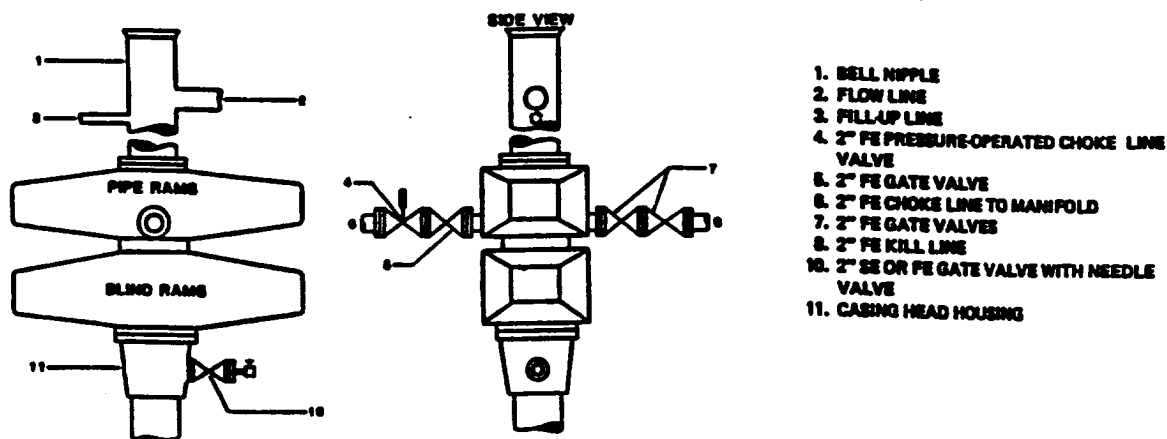


Figure 7-10. Standard Hydraulic Blowout Preventer Assembly
3 M Working Pressure Alternative 3 (without Drilling Spool)