

Submit to Appropriate
District Office
State Lease - 6 copies
Fee Lease - 5 copies

State of New Mexico
Energy, Minerals and Natural Resources Department

Form C-101
Revised 1-1-89

OIL CONSERVATION DIVISION

P.O. Box 2088
Santa Fe, New Mexico 87504-2088

DISTRICT I

P.O. Box 1980, Hobbs, NM 88240

DISTRICT II

P.O. Drawer DD, Artesia, NM 88210

DISTRICT III

1000 Rio Brazos Rd., Aztec, NM 87410

API NO. (assigned by OCD on New Wells)

30-039-24737

5. Indicate Type of Lease

STATE ☒

FEE ☐

6. State Oil & Gas Lease No.

E-286-45

APPLICATION FOR PERMIT TO DRILL, DEEPEN, OR PLUG BACK

1a. Type of Work:

DRILL ☒

RE-ENTER ☐

DEEPEN ☐

PLUG BACK ☐

b. Type of Well:

OIL
WELL ☐

GAS
WELL ☒

OTHER

SINGLE
ZONE ☒

MULTIPLE
ZONE ☐

7. Lease Name or Unit Agreement Name

San Juan 29-5 Unit

2. Name of Operator

Phillips Petroleum Company

8. Well No.

222

3. Address of Operator

300 W. Arrington, Suite 200, Farmington, N.M. 87401

9. Pool name or Wildcat

Basin Fruitland Coal Gas

4. Well Location

Unit Letter H

: 1403
1394

Feet From The North

Line and 1022

Feet From The East

Line

Section 32

Township

29N

Range

5W

NMPM

Rio Arriba

County

10. Proposed Depth
3410'

11. Formation

Fruitland

12. Rotary or C.T.

Rotary

13. Elevations (Show whether DF, RT, GR, etc.)
6522' (GL Unprepared)

14. Kind & Status Plug. Bond
Blanket

15. Drilling Contractor
Advise Later

16. Approx. Date Work will start
Upon Approval

17. PROPOSED CASING AND CEMENT PROGRAM

E/320

SIZE OF HOLE	SIZE OF CASING	WEIGHT PER FOOT	SETTING DEPTH	SACKS OF CEMENT	EST. TOP
12-1/4"	9-5/8"	36#, K-55	250'	200 Sxs	Circ to Surface
8-3/4"	7"	23#, K-55	3230'	600 Sxs	Circ to Surface
6-1/8"	5-1/2"	15.5# or 23#	3130'-3410'		*

*If the coal is cleated a 5-1/2", 23#, P-110 liner will be run in the open hole without being cemented.

*If the coal is not cleated a 5-1/2", 15.5#, K-55 liner will be run, cemented with 100 sxs cement and the well fractured.

APPROVAL EXPIRES 10-30-90
UNLESS DRILLING IS COMMENCED.
SPUD NOTICE MUST BE SUBMITTED
WITHIN 10 DAYS.

Use mud additives as required for control.

BOP Equipment: See attached schematic (Fig. 7-9 or 7-10)

RECEIVED
APR 30 1990
OIL CON. D¹
DIST. 3

IN ABOVE SPACE DESCRIBE PROPOSED PROGRAM: IF PROPOSAL IS TO DEEPEN OR PLUG BACK, GIVE DATA ON PRESENT PRODUCTIVE ZONE AND PROPOSED NEW PRODUCTIVE ZONE. GIVE BLOWOUT PREVENTER PROGRAM, IF ANY.

I hereby certify that the information above is true and complete to the best of my knowledge and belief.

SIGNATURE L. M. Sanders TITLE Supv. Regulatory Affairs DATE April 30, 1990
TYPE OR PRINT NAME L. M. Sanders (505)
TELEPHONE NO. 599-3431

(This space for State Use)

APPROVED BY Emil B. ... DEPUTY OIL & GAS INSPECTOR, DIST. #3 DATE APR 30 1990
CONDITIONS OF APPROVAL, IF ANY:

RECEIVED
 APR 3 1932
 OIL CON. DE
 DIST. 3

APPROVED FOR THE
 UNITED STATES DEPARTMENT OF
 THE OIL CON. DE
 DIST. 3

APR 3 1932

Submit to Appropriate
District Office
State Lease - 4 copies
Fee Lease - 3 copies

DISTRICT I
P.O. Box 1980, Hobbs, NM 88240

DISTRICT II
P.O. Drawer DD, Artesia, NM 88210

DISTRICT III
1000 Rio Brazos Rd., Aztec, NM 87410

State of New Mexico
Energy, Minerals and Natural Resources Department

OIL CONSERVATION DIVISION

P.O. Box 2088
Santa Fe, New Mexico 87504-2088

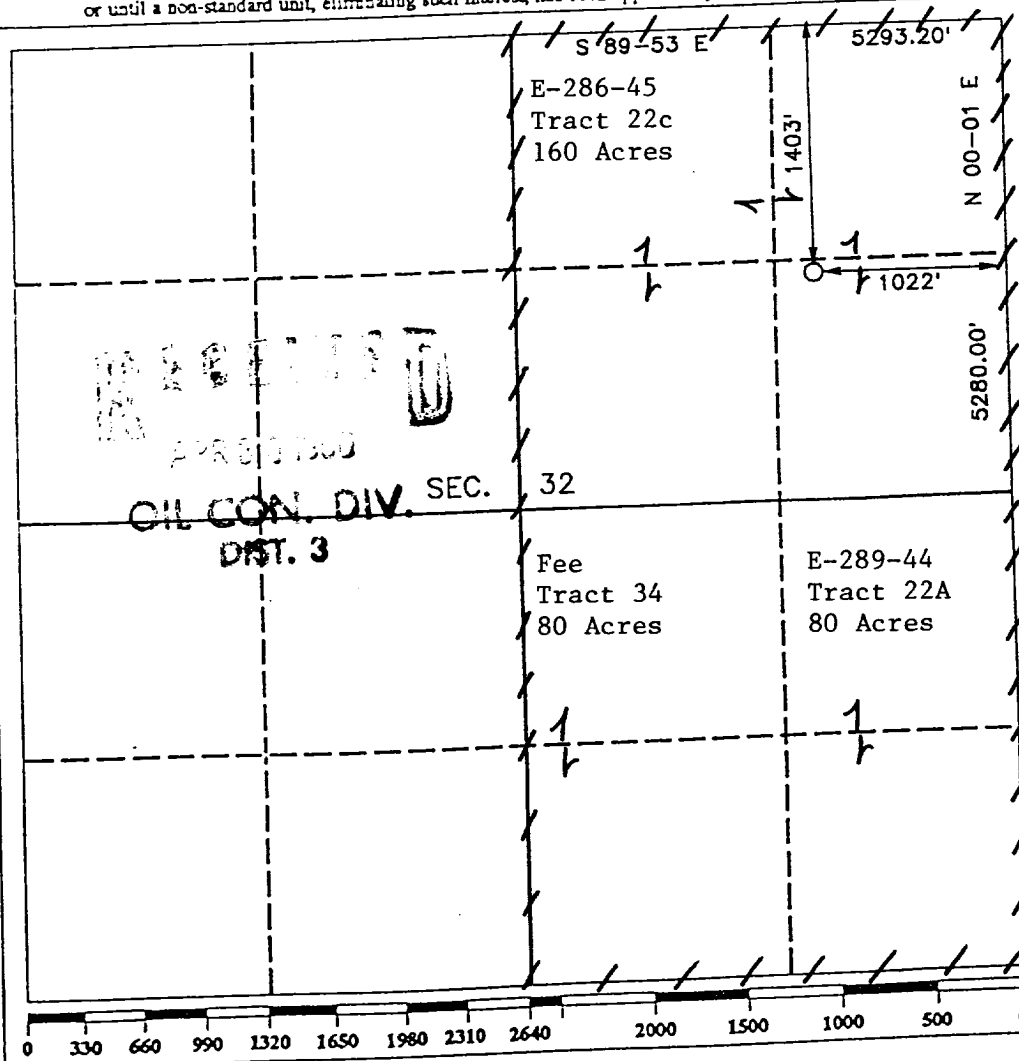
Form C-102
Revised 1-1-89

WELL LOCATION AND ACREAGE DEDICATION PLAT

All Distances must be from the outer boundaries of the section

Operator PHILLIPS PETROLEUM		Lease SAN JUAN 29-5 UNIT		Well No. 222
Unit Letter H	Section 32	Township T.29 N.	Range R.5 W.	County RIO ARriba COUNTY
Actual Footage Location of Well: 1403 feet from the NORTH line and 1022 feet from the EAST line				
Ground level Elev. 6522	Producing Formation Fruitland		Pool Basin Fruitland Coal	Dedicated Acreage: 320 Acres

1. Outline the acreage dedicated to the subject well by colored pencil or hatchure marks on the plat below.
2. If more than one lease is dedicated to the well, outline each and identify the ownership thereof (both as to working interest and royalty).
3. If more than one lease of different ownership is dedicated to the well, have the interest of all owners been consolidated by communitization, unitization, force-pooling, etc.? ☒ Yes ☐ No If answer is "yes" type of consolidation Unitized
If answer is "no" list the owners and tract descriptions which have actually been consolidated. (Use reverse side of this form if necessary.)
No allowable will be assigned to the well until all interests have been consolidated (by communitization, unitization, forced-pooling, or otherwise) or until a non-standard unit, eliminating such interest, has been approved by the Division.



OPERATOR CERTIFICATION
I hereby certify that the information contained herein is true and complete to the best of my knowledge and belief.

Signature
L. M. Sanders
Printed Name
L. M. Sanders
Position
Supv. Regulatory Affairs
Company
Phillips Petroleum Co.
Date
April 30, 1990

SURVEYOR CERTIFICATION

I hereby certify that the well location shown on this plat was plotted from field notes of actual surveys made by me or under my supervision, and that the same is true and correct to the best of my knowledge and belief.

Date Surveyed
APRIL 30, 1990
Signature & Seal of
Professional Surveyor
R. HOWARD DAGGETT
9679
Certificate No.
9679
Registered Professional
Land Surveyor