

UNITED STATES
DEPARTMENT OF THE INTERIOR
BUREAU OF LAND MANAGEMENT

APPLICATION FOR PERMIT TO DRILL, DEEPEN, OR PLUG BACK

1a. TYPE OF WORK
 DRILL DEEPEN PLUG BACK

b. TYPE OF WELL
 OIL WELL GAS WELL OTHER SINGLE ZONE MULTIPLE ZONE

2. NAME OF OPERATOR
 Phillips Petroleum Company 17654

3. ADDRESS OF OPERATOR
 300 W. Arrington, Suite 200, Farmington, N.M. 87401

4. LOCATION OF WELL (Report location clearly and in accordance with any State requirements.)
 At SURFACE Unit M, 979' FSL & 1066' FWL
 At proposed prod. zone Unit M, 979' FSL & 1066' FWL

14. DISTANCE IN MILES AND DIRECTION FROM NEAREST TOWN OR POST OFFICE*

16. DISTANCE FROM PROPOSED* LOCATION TO NEAREST PROPERTY OR LEASE LINE, FT. (Also to nearest drig. unit line, if any) 979' FSL

18. DISTANCE FROM PROPOSED LOCATION* TO NEAREST WELL, DRILLING, COMPLETED, OR APPLIED FOR, ON THIS LEASE, FT. 97' from #31

16. NO. OF ACRES IN LEASE
 2540.77
~~1620.77~~ Ac

19. PROPOSED DEPTH
 3450'

17. NO. OF ACRES ASSIGNED TO THIS WELL
 320 Ac W/2 of Section

20. ROTARY OR CABLE TOOLS
 Rotary

21. ELEVATIONS (Show whether DF, ET, GR, etc.) This action is subject to technical and procedural review pursuant to 43 CFR 3165.3 and appeal pursuant to 43 CFR 3165.4.
 6549' (GL Unprepared)

22. APPROX. DATE WORK WILL START*
 Upon Approval

23. PROPOSED CASING AND CEMENTING PROGRAM

SIZE OF HOLE	SIZE OF CASING	WEIGHT PER FOOT	SETTING DEPTH	*GENERAL QUANTITY OF CEMENT
12-1/4"	9-5/8"	36#, K-55	250'	250' sxs, Circ to Surface
8-3/4"	7"	23#, K-55	3220'	650 sxs, Circ to Surface
6-1/8"	5-1/2"	15.5# or 23#	3120'-3450'	*

*If the coal is cleated a 5-1/2", 23#, P-110 liner will be run in the open hole without being cemented.
 *If the coal is not cleated the well will be stimulated and a 5-1/2", 15.5#, J-55 liner will be run without being cemented.

RECEIVED
 JUL 28 1990
 OIL CON. DIV.
 DIST. 3

Mud Program and BOP Equipment: See Attached

IN ABOVE SPACE DESCRIBE PROPOSED PROGRAM: If proposal is to deepen or plug back, give data on present productive zone and proposed new productive zone. If proposal is to drill or deepen directionally, give pertinent data on subsurface locations and measured and true vertical depths. Give blowout preventer program, if any.

24. SIGNED L.M. Sanders TITLE Supv. Regulatory Affairs DATE 6/4/90

(This space for Federal or State office use)

APPROVED
 AS AMENDED

PERMIT NO. _____ APPROVAL DATE _____

APPROVED BY _____ TITLE _____

CONDITIONS OF APPROVAL, IF ANY: _____

NMCCD

JUL 18 1990
 AREA MANAGER

Submit to Appropriate District Office
State Lease - 4 copies
Fee Lease - 3 copies

State of New Mexico
Energy, Minerals and Natural Resources Department

Form C-102
Revised 1-1-89

OIL CONSERVATION DIVISION

P.O. Box 2088
Santa Fe, New Mexico 87504-2088

DISTRICT I
P.O. Box 1980, Hobbs, NM 88240

DISTRICT II
P.O. Drawer DD, Artesia, NM 88210

DISTRICT III
1000 Rio Brazos Rd., Aztec, NM 87410

WELL LOCATION AND ACREAGE DEDICATION PLAT

All Distances must be from the outer boundaries of the section

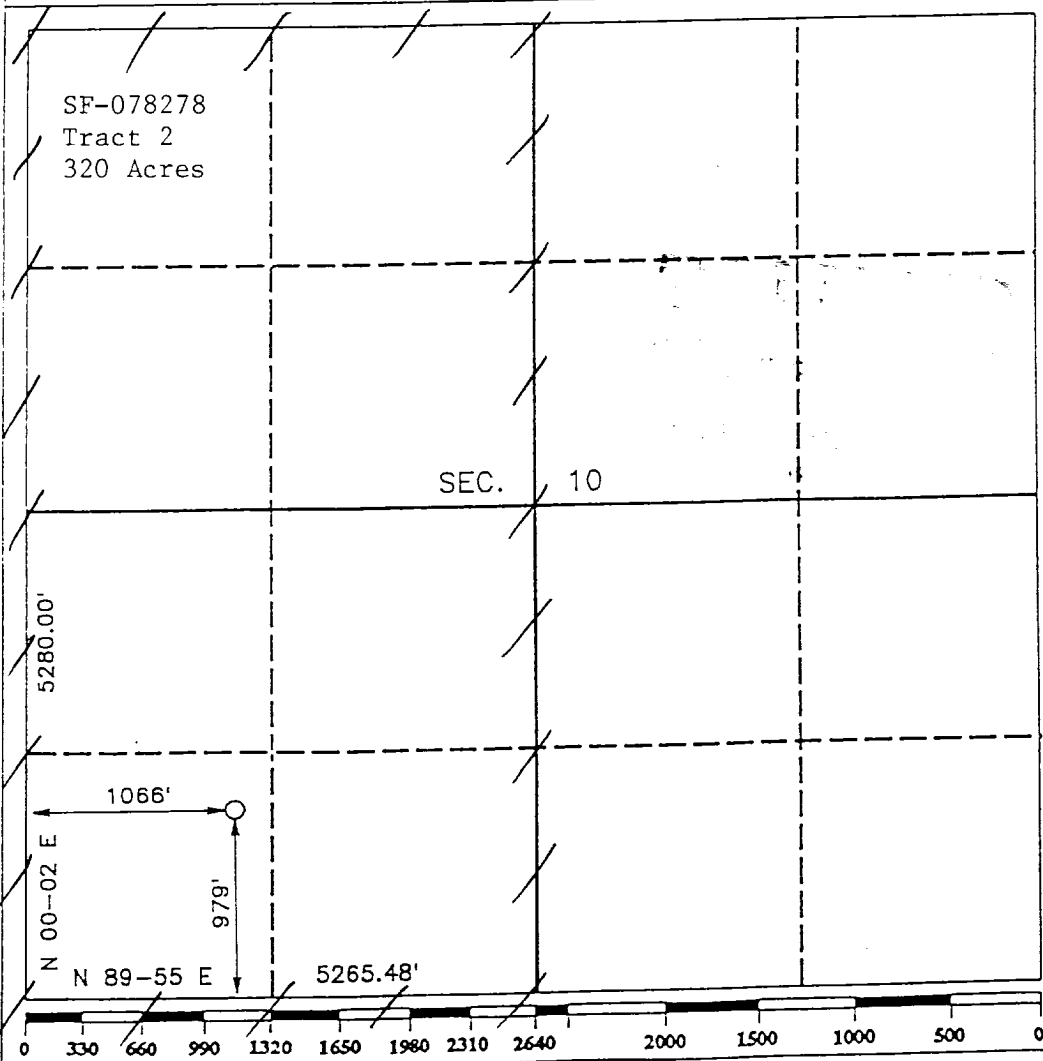
Operator PHILLIPS PETROLEUM		Lease SAN JUAN 29-6 UNIT		Well No. 247
Unit Letter M	Section 10	Township T.29 N.	Range R.6 W.	County RIO ARRIBA COUNTY
Actual Footage Location of Well: 979 feet from the SOUTH line and 1066 feet from the WEST line				
Ground level Elev. 6549	Producing Formation Fruitland	Pool Basin Fruitland Coal	Dedicated Acreage: 320 Acres	

- Outline the acreage dedicated to the subject well by colored pencil or hachure marks on the plat below.
- If more than one lease is dedicated to the well, outline each and identify the ownership thereof (both as to working interest and royalty).
- If more than one lease of different ownership is dedicated to the well, have the interest of all owners been consolidated by communitization, unitization, force-pooling, etc.?

Yes No If answer is "yes" type of consolidation Unitization

If answer is "no" list the owners and tract descriptions which have actually been consolidated. (Use reverse side of this form if necessary.)

No allowable will be assigned to the well until all interests have been consolidated (by communitization, unitization, forced-pooling, or otherwise) or until a non-standard unit, eliminating such interest, has been approved by the Division.



OPERATOR CERTIFICATION

I hereby certify that the information contained herein is true and complete to the best of my knowledge and belief.

Signature
L.M. Sanders

Printed Name
L. M. Sanders

Position
Supv. Regulatory Affairs

Company
Phillips Petroleum Co.

Date
6/4/90

SURVEYOR CERTIFICATION

I hereby certify that the well location shown on this plat was plotted from field notes of actual surveys made by me or under my supervision, and that the same is true and correct to the best of my knowledge and belief.

Date Surveyed
APR 11 1990

Signature & Seal of Professional Surveyor
R. Howard Dagget

R. HOWARD DAGGET
8878

Certificate No.
9878

Registered Professional Land Surveyor