

UNITED STATES  
DEPARTMENT OF THE INTERIOR  
BUREAU OF LAND MANAGEMENT

APPLICATION FOR PERMIT TO DRILL, DEEPEN, OR PLUG BACK

a. TYPE OF WORK  
DRILL ☒ DEEPEN ☐ PLUG BACK ☐

b. TYPE OF WELL  
OIL WELL ☐ GAS WELL ☒ OTHER ☐ SINGLE ZONE ☒ MULTIPLE ZONE ☐

c. NAME OF OPERATOR  
Phillips Petroleum Company

d. ADDRESS OF OPERATOR  
300 W. Arrington, Suite 200, Farmington, N.M. 87401

e. LOCATION OF WELL (Report location clearly and in accordance with any State requirements.)  
At surface Unit K, 1479' FSL & 1620' FWL  
At proposed prod. zone Unit K, 1479' FSL & 1620' FWL

f. DISTANCE IN MILES AND DIRECTION FROM NEAREST TOWN OR POST OFFICE\*

g. LEASE DESIGNATION AND SERIAL NO.  
SF-078284

h. IF INDIAN, ALLOTTEE OR TRIBE NAME

i. UNIT AGREEMENT NAME  
San Juan 29-6 Unit

j. FARM OR LEASE NAME

k. WELL NO.  
251

l. FIELD AND POOL, OR WILDCAT  
Basin Fruitland Coal Gas

m. SEC., T., R., M., OR BLK. AND SURVEY OR AREA  
Sec. 23, T-29-N, R-6 -W

n. COUNTY OR PARISH  
Rio Arriba

o. STATE  
NM

p. DISTANCE FROM PROPOSED\* LOCATION TO NEAREST PROPERTY OR LEASE LINE, FT. (Also to nearest drig. unit line, if any) 1479' FSL

q. DISTANCE FROM PROPOSED LOCATION\* TO NEAREST WELL, DRILLING, COMPLETED, OR APPLIED FOR, ON THIS LEASE, FT. 286' from #27

r. NO. OF ACRES IN LEASE  
1273.24  
153.24 Ac

s. NO. OF ACRES ASSIGNED TO THIS WELL  
320 Ac W/2 of Section

t. PROPOSED DEPTH  
3575'

u. ROTARY OR CABLE TOOLS  
Rotary

v. ELEVATIONS (Show whether DF, RT, GR, etc.)  
6697' (GL Unprepared)

w. APPROX. DATE WORK WILL START\*  
Upon Approval

x. PROPOSED CASING AND CEMENTING PROGRAM

SIZE OF HOLE	SIZE OF CASING	WEIGHT PER FOOT	SETTING DEPTH	QUANTITY OF CEMENT
12-1/4"	9-5/8"	36#, K-55	250'	250' sxs, Circ to Surface
8-3/4"	7"	23#, K-55	3377'	650 sxs, Circ to Surface
6-1/8"	5-1/2"	15.5# or 23#	3277'-3575'	*

\*If the coal is cleated a 5-1/2", 23#, P-110 liner will be run in the open hole without being cemented.

\*If the coal is not cleated the well will be stimulated and a 5-1/2", 15.5#, J-55 liner will be run without being cemented.

RECEIVED  
JUL 23 1990  
OIL CON. DIV.  
DIST. 3

Mud Program and BOP Equipment: See Attached

Y. ABOVE SPACE DESCRIBE PROPOSED PROGRAM: If proposal is to deepen or plug back, give data on present productive zone and proposed new productive one. If proposal is to drill or deepen directionally, give pertinent data on subsurface locations and measured and true vertical depths. Give blowout reventer program, if any.

z. SIGNED L.M. Sanders TITLE Supv. Regulatory Affairs DATE 6/4/90

(This space for Federal or State office use)

aa. PERMIT NO. APPROVAL DATE

ab. APPROVED BY TITLE

ac. CONDITIONS OF APPROVAL, IF ANY:

APPROVED  
AS AMENDED

JUL 18 1990  
AREA MANAGER

NMOCD

\*See Instructions On Reverse Side

Submit to Appropriate  
District Office  
State Lease - 4 copies  
Fee Lease - 3 copies

State of New Mexico  
Energy, Minerals and Natural Resources Department

OIL CONSERVATION DIVISION

P.O. Box 2088  
Santa Fe, New Mexico 87504-2088

Form C-102  
Revised 1-1-89

DISTRICT I  
P.O. Box 1980, Hobbs, NM 88240

DISTRICT II  
P.O. Drawer DD, Artesia, NM 88210

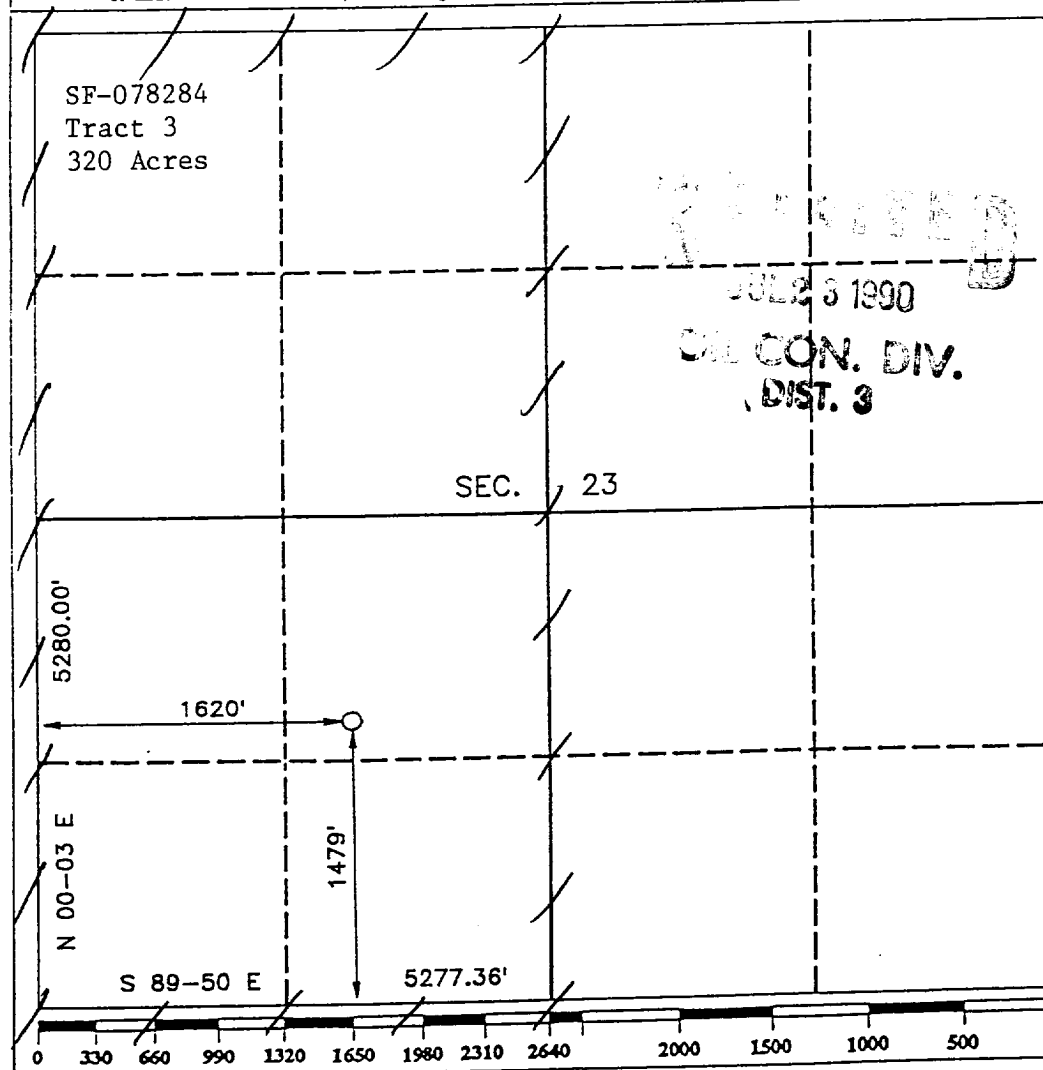
DISTRICT III  
1000 Rio Brazos Rd., Aztec, NM 87410

WELL LOCATION AND ACREAGE DEDICATION PLAT

All Distances must be from the outer boundaries of the section

Operator <b>PHILLIPS PETROLEUM</b>		Lease <b>SAN JUAN 29-6 UNIT</b>		Well No. <b>251</b>
Unit Letter <b>K</b>	Section <b>23</b>	Township <b>1.29 N.</b>	Range <b>R.6 W.</b>	County <b>RIO ARriba COUNTY</b>
Actual Footage Location of Well: <b>1479</b> feet from the <b>SOUTH</b> line and <b>1620</b> feet from the <b>WEST</b> line				
Ground level Elev. <b>6697</b>	Producing Formation <b>Fruitland</b>	Pool <b>Basin Fruitland Coal</b>	Dedicated Acreage: <b>320</b> Acres	

1. Outline the acreage dedicated to the subject well by colored pencil or hatchure marks on the plat below.
2. If more than one lease is dedicated to the well, outline each and identify the ownership thereof (both as to working interest and royalty).
3. If more than one lease of different ownership is dedicated to the well, have the interest of all owners been consolidated by communitization, unitization, force-pooling, etc.?  
☒ Yes ☐ No If answer is "yes" type of consolidation Unitization  
If answer is "no" list the owners and tract descriptions which have actually been consolidated. (Use reverse side of this form if necessary.)  
No allowable will be assigned to the well until all interests have been consolidated (by communitization, unitization, forced-pooling, or otherwise) or until a non-standard unit, eliminating such interest, has been approved by the Division.



OPERATOR CERTIFICATION

I hereby certify that the information contained herein is true and complete to the best of my knowledge and belief.

Signature  
*L. M. Sanders*  
Printed Name  
**L. M. Sanders**  
Position  
**Supv. Regulatory Affairs**  
Company  
**Phillips Petroleum Co.**  
Date  
**6/4/90**

SURVEYOR CERTIFICATION

I hereby certify that the well location shown on this plat was plotted from field notes of actual surveys made by me or under my supervision, and that the same is true and correct to the best of my knowledge and belief.

Date Surveyed  
**APRIL 11 1990**  
Signature & Seal  
*R. Howard Daggett*  
**R. HOWARD DAGGETT**  
Professional Surveyor  
Certificate No.  
**9679**  
Registered Professional  
Land Surveyor