

30-039-24978 ✓

Form 3160-3
(November 1983)
(formerly 9-331C)

SUBMIT IN TRIPLICATE*
(Other instructions on
reverse side)

Form approved.
Budget Bureau No. 1004-0136
Expires August 31, 1985

UNITED STATES
DEPARTMENT OF THE INTERIOR
BUREAU OF LAND MANAGEMENT

APPLICATION FOR PERMIT TO DRILL, DEEPEN, OR PLUG BACK

1a. TYPE OF WORK
DRILL ☒ DEEPEN ☐ PLUG BACK ☐
b. TYPE OF WELL
OIL WELL ☐ GAS WELL ☒ OTHER ☐ SINGLE ZONE ☒ MULTIPLE ZONE ☐
2. NAME OF OPERATOR
Phillips Petroleum Company 17654
3. ADDRESS OF OPERATOR
300 W. Arrington, Suite 200, Farmington, N.M. 87401
4. LOCATION OF WELL (Report location clearly and in accordance with any State requirements.)
At surface Unit M, 969' FSL & 1040' FWL
At proposed prod. zone Unit M, 969' FSL & 1040' FWL
14. DISTANCE IN MILES AND DIRECTION FROM NEAREST TOWN OR POST OFFICE*

5. LEASE DESIGNATION AND SERIAL NO.
N° -03040-A
6. IF INDIAN, ALLOTTEE OR TRIBE NAME
7. UNIT AGREEMENT NAME 9257
San Juan 29-6 Unit
8. FARM OR LEASE NAME
9. WELL NO.
244
10. FIELD AND POOL, OR WILDCAT 71629
Basin Fruitland Coal Gas
11. SEC. T., R., N., OR BLK. AND SURVEY OR AREA
Sec. 31, T-29-N, R-6-W
12. COUNTY OR PARISH Rio Arriba
13. STATE N.M.

16. DISTANCE FROM PROPOSED* LOCATION TO NEAREST PROPERTY OR LEASE LINE, FT. (Also to nearest drig. unit line, if any) 969' FSL
17. NO. OF ACRES IN LEASE 840 acres
18. DISTANCE FROM PROPOSED LOCATION* TO NEAREST WELL, DRILLING, COMPLETED, OR APPLIED FOR, ON THIS LEASE, FT. 176' from #106
19. PROPOSED DEPTH 3655'
20. ROTARY OR CABLE TOOLS Rotary

21. ELEVATIONS (Show whether DF, RT, GR, etc.) 6823' (GL Unprepared)
22. APPROX. DATE WORK WILL START* Upon Approval
This section is subject to technical and procedural review pursuant to 43 CFR 3165.3 and appeal pursuant to 43 CFR 3185.4.

23. PROPOSED CASING AND CEMENTING PROGRAM

SIZE OF HOLE	SIZE OF CASING	WEIGHT PER FOOT	SETTING DEPTH	"GENERAL REQUIREMENTS"
12-1/4"	9-5/8"	36#, K-55	250'	250' sxs, Circ to Surface
8-3/4"	7"	23#, K-55	3437'	650' sxs, Circ to Surface
6-1/8"	5-1/2"	15.5# or 23#	3337' - 3655'	*

*If the coal is cleated a 5-1/2", 23#, P-110 liner will be run in the open hole without being cemented.
*If the coal is not cleated the well will be stimulated and a 5-1/2", 15.5#, J-55 liner will be run without being cemented.

RECEIVED
OCT 25 1990
OIL CON. DIV.
DIST. 3

Mud Program and BOP Equipment: See Attached

IN ABOVE SPACE DESCRIBE PROPOSED PROGRAM: If proposal is to deepen or plug back, give data on present productive zone and proposed new productive zone. If proposal is to drill or deepen directionally, give pertinent data on subsurface locations and measured and true vertical depths. Give blowout preventer program, if any.

24. SIGNED L.M. Sanders TITLE Supv. Regulatory Affairs DATE 6/16/90
(This space for Federal or State office use)

PERMIT NO. _____ APPROVAL DATE _____
APPROVED BY _____ TITLE _____
CONDITIONS OF APPROVAL, IF ANY: ok

NMOCD

Submit to Appropriate
District Office
State Lease - 4 copies
Fee Lease - 3 copies

DISTRICT I
P.O. Box 1980, Hobbs, NM 88240

DISTRICT II
P.O. Drawer DD, Artesia, NM 88210

DISTRICT III
1000 Rio Brazos Rd., Aztec, NM 87410

State of New Mexico
Energy, Minerals and Natural Resources Department

OIL CONSERVATION DIVISION

P.O. Box 2088
Santa Fe, New Mexico 87504-2088

Form C-102
Revised 1-1-89

WELL LOCATION AND ACREAGE DEDICATION PLAT

All Distances must be from the outer boundaries of the section

Operator PHILLIPS PETROLEUM			Lease SAN JUAN 29-6 UNIT		Well No. 244
Unit Letter M	Section 31	Township T.29 N.	Range R.6 W.	County RIO ARriba COUNTY	
Actual Footage Location of Well: 969 feet from the SOUTH line and 1040 feet from the WEST line					
Ground level Elev. 6823	Producing Formation Fruitland			Pool Basin Fruitland Coal	Dedicated Acreage: 320 Acres

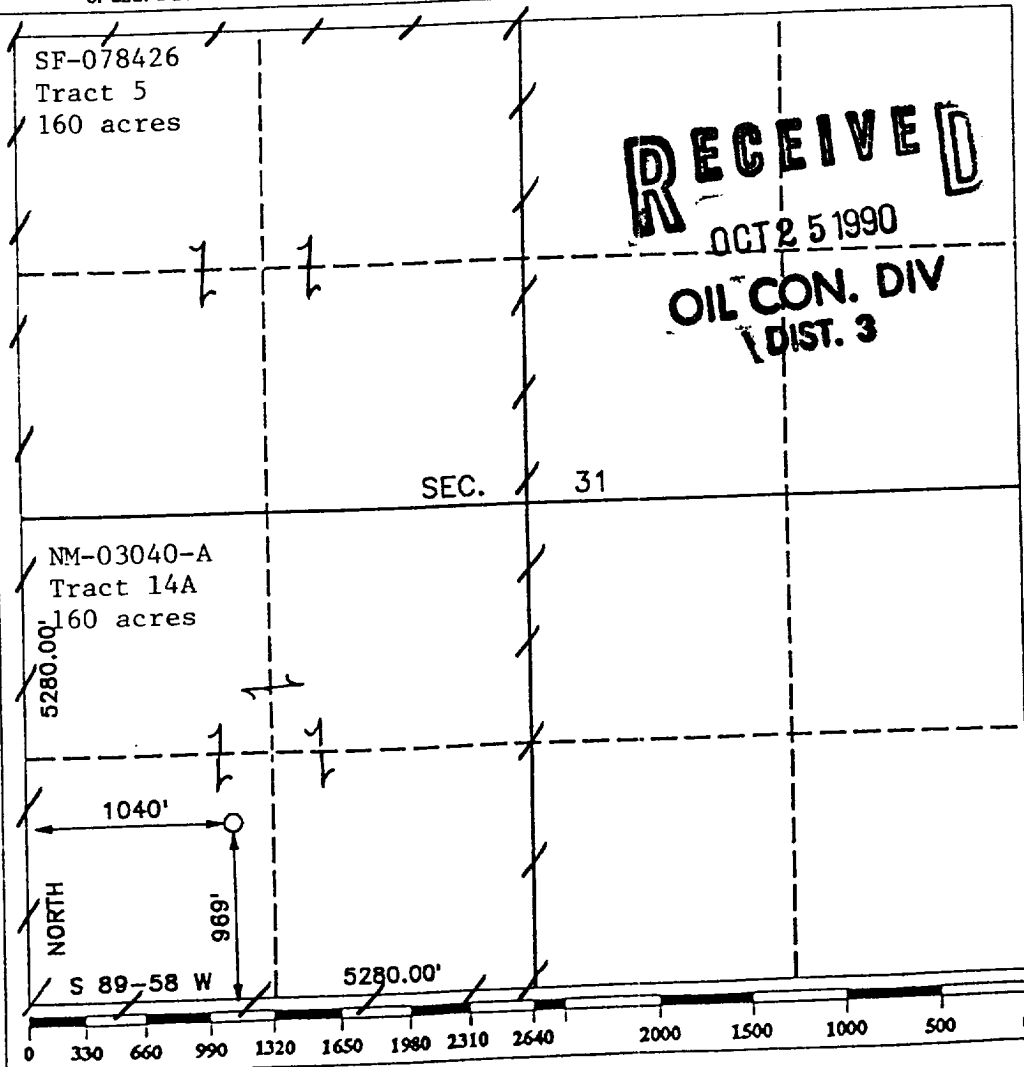
1. Outline the acreage dedicated to the subject well by colored pencil or hachure marks on the plat below.

2. If more than one lease is dedicated to the well, outline each and identify the ownership thereof (both as to working interest and royalty).

3. If more than one lease of different ownership is dedicated to the well, have the interest of all owners been consolidated by communitization, unitization, force-pooling, etc.?

☒ Yes ☐ No If answer is "yes" type of consolidation unitization
If answer is "no" list the owners and tract descriptions which have actually been consolidated. (Use reverse side of this form if necessary.)

No allowable will be assigned to the well until all interests have been consolidated (by communitization, unitization, forced-pooling, or otherwise) or until a non-standard unit, eliminating such interest, has been approved by the Division.



OPERATOR CERTIFICATION

I hereby certify that the information contained herein is true and complete to the best of my knowledge and belief.

Signature
L. M. Sanders
Printed Name
L. M. Sanders
Position
Supv. Regulatory Affairs
Company
Phillips Petroleum Company
Date
6/16/90

SURVEYOR CERTIFICATION

I hereby certify that the well location shown on this plat was plotted from field notes of actual surveys made by me or under my supervision, and that the same is true and correct to the best of my knowledge and belief.

Date Surveyed
MAY 12 1990
Signature of Registered Professional Surveyor
R. Howard Daggett
Certificate No.
9679
Registered Professional
Land Surveyor