

UNITED STATES
DEPARTMENT OF THE INTERIOR
BUREAU OF LAND MANAGEMENT

30-039-25081

APPLICATION FOR PERMIT TO DRILL, DEEPEN, OR PLUG BACK

1a. TYPE OF WORK

DRILL ☒

DEEPEN ☐

PLUG BACK ☐

b. TYPE OF WELL

OIL WELL ☐

GAS WELL ☒

OTHER

SINGLE ZONE ☒

MULTIPLE ZONE ☐

2. NAME OF OPERATOR

Phillips Petroleum Company

3. ADDRESS OF OPERATOR

300 W. Arrington, Suite 200, Farmington, N.M. 87401

4. LOCATION OF WELL (Report location clearly and in accordance with any State requirements.)
At surface Unit K, 1926' FSL & 1847' FWL

At proposed prod. zone Unit K, 1926' FSL & 1847' FWL

14. DISTANCE IN MILES AND DIRECTION FROM NEAREST TOWN OR POST OFFICE*

15. DISTANCE FROM PROPOSED*
LOCATION TO NEAREST
PROPERTY OR LEASE LINE, FT.
(Also to nearest drig. unit line, if any)

1847' FWL

18. DISTANCE FROM PROPOSED LOCATION*
TO NEAREST WELL, DRILLING, COMPLETED,
OR APPLIED FOR, ON THIS LEASE, FT.

296' from #103

16. NO. OF ACRES IN LEASE

321.90 Ac.

19. PROPOSED DEPTH

3255'

17. NO. OF ACRES ASSIGNED
TO THIS WELL

320 Ac W/2 of Section 321.60

20. ROTARY OR CABLE TOOLS

Rotary

21. ELEVATIONS (Show whether DF, RT, GR, etc.)

6424' ✓ (GL Unprepared)

22. APPROX. DATE WORK WILL START*

Upon Approval

23. PROPOSED CASING AND CEMENTING PROGRAM

SIZE OF HOLE	SIZE OF CASING	WEIGHT PER FOOT	SETTING DEPTH	QUANTITY OF CEMENT
12-1/4"	9-5/8"	36#, K-55	250'	250 sxs, Circ to Surface
8-3/4"	7"	23#, K-55	3084'	650 sxs, Circ to Surface
6-1/8"	5-1/2"	15.5# or 23#	2984' - 3255'	*

*If the coal is cleated a 5-1/2", 23#, P-110 liner will be run in the open hole without being cemented.

*If the coal is not cleated the well will be stimulated and a 5-1/2", 15.5#, J-55 liner will be run without being cemented.

RECEIVED

JUN 26 1991

OIL CON. DIV.
DIST. 3

Mud Program and BOP Equipment: See Attached

IN ABOVE SPACE DESCRIBE PROPOSED PROGRAM: If proposal is to deepen or plug back, give data on present productive zone and proposed new productive zone. If proposal is to drill or deepen directionally, give pertinent data on subsurface locations and measured and true vertical depths. Give blowout preventer program, if any.

24.

SIGNED

J. M. Sanders

TITLE Supv. Regulatory Affairs

DATE

6/25/90

(This space for Federal or State office use)

PERMIT NO.

APPROVAL DATE

APPROVED
AS AMENDED

APPROVED BY
CONDITIONS OF APPROVAL, IF ANY:

TITLE

NMOCD

JUN 24 1991

AREA MANAGER

1944-1945

1946-1947

REPRODUCTION
OF DOCUMENT

1948-1949

1950-1951

Submit to Appropriate
District Office
State Lease - 4 copies
Fee Lease - 3 copies

DISTRICT I
P.O. Box 1980, Hobbs, NM 88240

DISTRICT II
P.O. Drawer DD, Artesia, NM 88210

DISTRICT III
1000 Rio Brazos Rd., Aztec, NM 87410

State of New Mexico
Energy, Minerals and Natural Resources Department

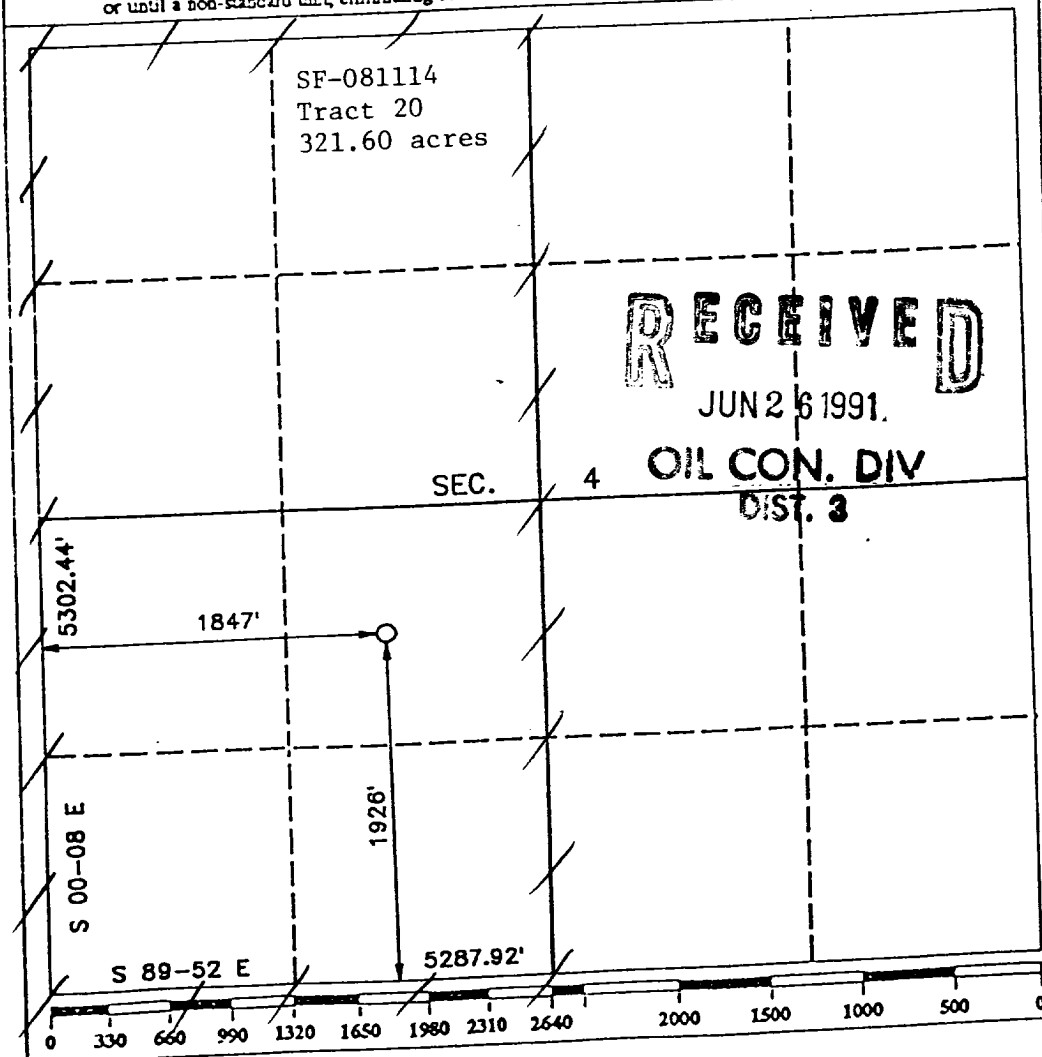
OIL CONSERVATION DIVISION
P.O. Box 2088
Santa Fe, New Mexico 87504-2088

Form C-102
Revised 1-1-89

WELL LOCATION AND ACREAGE DEDICATION PLAT
All Distances must be from the outer boundaries of the section

Operator PHILLIPS PETROLEUM		Lease SAN JUAN 29-5 UNIT		Well No. 219
Unit Letter K	Section 4	Township T.29 N.	Range R.5 W.	County RIO ARriba COUNTY
Actual Footage Location of Well: 1926 feet from the SOUTH line and 1847 feet from the WEST line				
Ground level Elev. 6424	Producing Formation Fruitland	Pool Basin Fruitland Coal		Dedicated Acreage: 321.60 Acres

1. Outline the acreage dedicated to the subject well by colored pencil or hatchure marks on the plat below.
2. If more than one lease is dedicated to the well, outline each and identify the ownership thereof (both as to working interest and royalty).
3. If more than one lease of different ownership is dedicated to the well, have the interest of all owners been consolidated by communitization, unitization, force-pooling, etc.?
☒ Yes ☐ No If answer is "yes" type of consolidation Unitization
If answer is "no" list the owners and tract descriptions which have actually been consolidated. (Use reverse side of this form if necessary.)
No allowable will be assigned to the well until all interests have been consolidated (by communitization, unitization, forced-pooling, or otherwise) or until a non-standard unit, eliminating such interest, has been approved by the Division.



OPERATOR CERTIFICATION

I hereby certify that the information contained herein is true and complete to the best of my knowledge and belief.

Signature

L. M. Sanders

Printed Name

L. M. Sanders

Position

Supv. Regulatory Affairs

Company

Phillips Petroleum Co.

Date

6/25/90

SURVEYOR CERTIFICATION

I hereby certify that the well location shown on this plat was plotted from field notes of actual surveys made by me or under my supervision, and that the same is true and correct to the best of my knowledge and belief.

Date Surveyed

MAY 1991

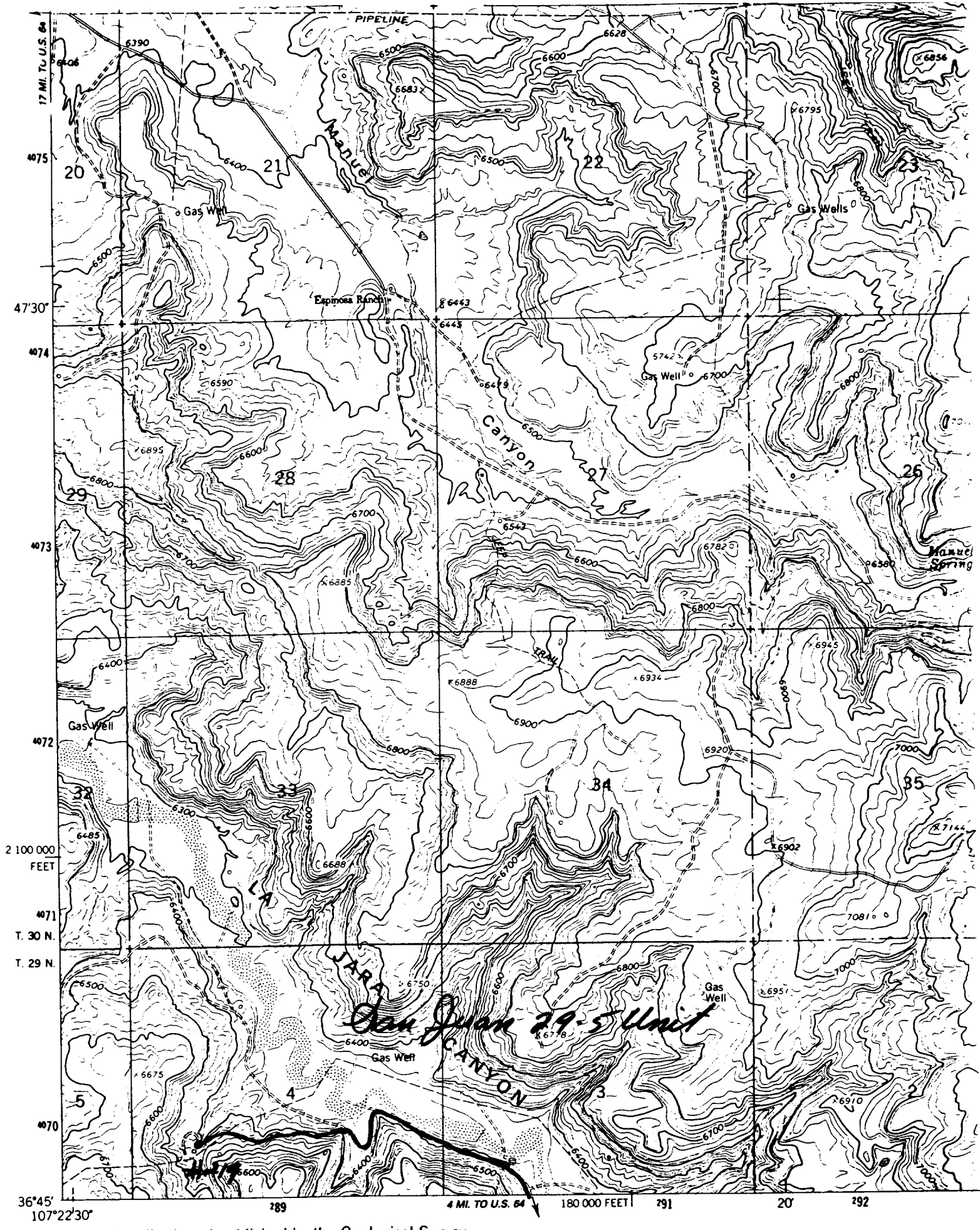
Signature & Seal of
Professional Surveyor

R. HOWARD DAGGETT
1979

Certificate No.

9078

Registered Professional
Land Surveyor



Mapped, edited, and published by the Geological Survey

Control by USGS and NOS/NOAA

