

UNITED STATES
DEPARTMENT OF THE INTERIOR
BUREAU OF LAND MANAGEMENT

30-039-25243

APPLICATION FOR PERMIT TO DRILL, DEEPEN, OR PLUG BACK

1a. TYPE OF WORK DRILL ☒ DEEPEN ☐ PLUG BACK ☐

b. TYPE OF WELL
OIL WELL ☐ GAS WELL ☒ OTHER ☐ SINGLE ZONE ☐ MULTIPLE ZONE ☐

2. NAME OF OPERATOR

Phillips Petroleum Company 17654

3. ADDRESS OF OPERATOR

5525 Hwy 64 NBU 3004, Farmington, NM 87401

4. LOCATION OF WELL (Report location clearly and in accordance with any State requirements.)*
At surface Unit H, 1688' FNL & 1187' FEL

At proposed prod. zone Same as above

14. DISTANCE IN MILES AND DIRECTION FROM NEAREST TOWN OR POST OFFICE*

Approx. 25 Miles East of Blanco

10. DISTANCE FROM PROPOSED*
LOCATION TO NEAREST
PROPERTY OR LEASE LINE, FT.
(Also to nearest drlg. unit line, if any)

16. NO. OF ACRES IN LEASE
800.88

17. NO. OF ACRES ASSIGNED
TO THIS WELL
320

13. DISTANCE FROM PROPOSED LOCATION*
TO NEAREST WELL, DRILLING, COMPLETED,
OR APPLIED FOR, ON THIS LEASE, FT.

18. PROPOSED DEPTH
3550'

20. ROTARY OR CABLE TOOLS
Rotary

21. ELEVATIONS (Show whether DP, RT, GR, etc.) This action is subject to technical and
procedural review pursuant to 43 CFR 3165.3
6646' (GL Unprepared) and appeal pursuant to 43 CFR 3165.4.

22. APPROX. DATE WORK WILL START*
Upon Approval

23. PROPOSED CASING AND CEMENTING PROGRAM

SIZE OF HOLE	SIZE OF CASING	WEIGHT PER FOOT	SETTING DEPTH	QUANTITY OF CEMENT*
12-1/4"	9-5/8"	36#, K-55	250'	250 Sx, Circ to Surface
8-3/4"	7"	23#, K-55	3320'	650 Sx, Circ to Surface
6-1/8"	5-1/2"	23#	3220'-3500'	*

*If the coal is cleated a 5-1/2", 23#, P-110 liner will be run in the open hole without being cemented.

RECEIVED
NOV 23 1992
OIL CON. DIV.
DIST. 3

RECEIVED
BLM
NOV 20 1992
OIL CON. DIV.
DIST. 3

Mud Program and BOP Equipment: See Attached

IN ABOVE SPACE DESCRIBE PROPOSED PROGRAM: If proposal is to deepen or plug back, give data on present productive zone and proposed new productive zone. If proposal is to drill or deepen directionally, give pertinent data on subsurface locations and measured and true vertical depths. Give blowout preventer program, if any.

24.

SIGNED L. E. Robinson
L. E. Robinson

TITLE Sr. Drlg & Prod Engr. Spec. DATE 10-5-92

(This space for Federal or State office use)

PERMIT NO. _____

APPROVAL DATE _____

APPROVED BY _____
CONDITIONS OF APPROVAL, IF ANY:

TITLE _____

SEE ATTACHED FOR
CONDITIONS OF APPROVAL

*See Instructions On Reverse Side

NM00D

APPROVED
AS AMENDED

NOV 20 1992
AREA MANAGER

Submit to Appropriate
District Office
State Lease - 4 copies
Fee Lease - 3 copies

State of New Mexico
Energy, Minerals and Natural Resources Department

OIL CONSERVATION DIVISION

P.O. Box 2088
Santa Fe, New Mexico 87504-2088

Form C-102
Revised 1-1-89

RECEIVED
BLM

92 OCT 14 PM 3:11

019 FARMINGTON, N.M.

DISTRICT I
P.O. Box 1980, Hobbs, NM 88240

DISTRICT II
P.O. Drawer DD, Artesia, NM 88210

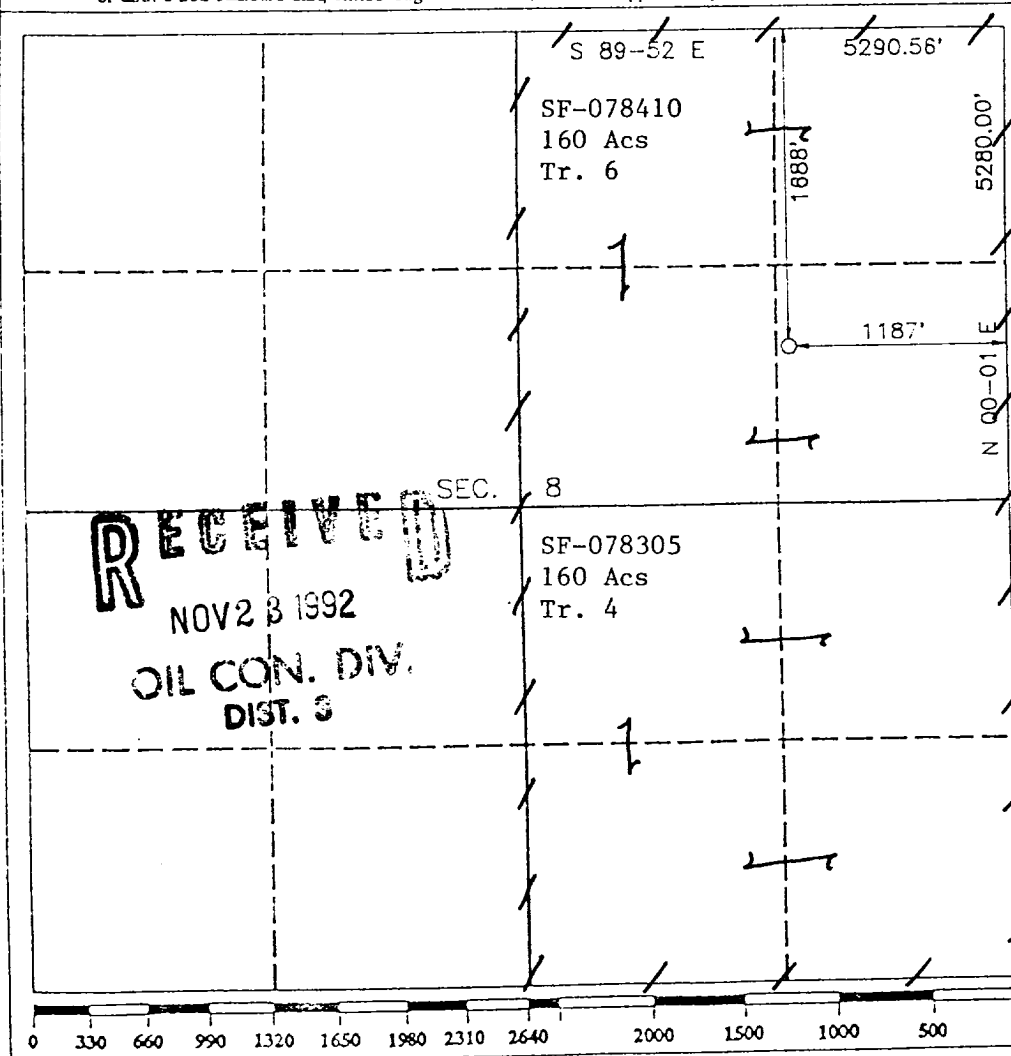
DISTRICT III
1000 Rio Brazos Rd., Aztec, NM 87410

WELL LOCATION AND ACREAGE DEDICATION PLAT

All Distances must be from the outer boundaries of the section

Operator PHILLIPS PETROLEUM		Lease SAN JUAN 29-5 UNIT		Well No. 232
Unit Letter H	Section 8	Township T.29 N.	Range R.5 W.	County RIO ARRIBA
Actual Footage Location of Well: 1688 feet from the NORTH line and 1187 feet from the EAST line				
Ground level Elev. 6646	Producing Formation Fruitland	Pool Basin Fruitland Coal		Dedicated Acreage: 320 Acres

- Outline the acreage dedicated to the subject well by colored pencil or hatchure marks on the plat below.
- If more than one lease is dedicated to the well, outline each and identify the ownership thereof (both as to working interest and royalty).
- If more than one lease of different ownership is dedicated to the well, have the interest of all owners been consolidated by communitization, unitization, force-pooling, etc?
☐ Yes ☐ No If answer is "yes" type of consolidation _____
If answer is "no" list the owners and tract descriptions which have actually been consolidated. (Use reverse side of this form if necessary.) _____
No allowable will be assigned to the well until all interests have been consolidated (by communitization, unitization, forced-pooling, or otherwise) or until a non-standard unit, eliminating such interest, has been approved by the Division.



OPERATOR CERTIFICATION

I hereby certify that the information contained herein is true and complete to the best of my knowledge and belief.

Signature
L.E. Robinson
Printed Name
L.E. Robinson
Position
Sr. Drlg & Prod Engr Spec
Company
Phillips Petroleum Company
Date
October 5, 1992

SURVEYOR CERTIFICATION

I hereby certify that the well location shown on this plat was plotted from field notes of actual surveys made by me or under my supervision, and that the same is true and correct to the best of my knowledge and belief.

Date Surveyed
AUGUST 31, 1992

Signature & Seal of Professional Surveyor
A. Rush
8894
Certificate No. **8894**

