

CONFIDENTIAL - TIGHT HOLE

SUBMIT IN TRIPLICATE*

(Other instructions on
reverse side)

Form approved.
Budget Bureau No. 1004-0136
Expires August 31, 1985

UNITED STATES
DEPARTMENT OF THE INTERIOR
BUREAU OF LAND MANAGEMENT

CONFIDENTIAL

APPLICATION FOR PERMIT TO DRILL, DEEPEN, OR PLUG BACK

1a. TYPE OF WORK DRILL ☒ DEEPEN ☐ PLUG BACK ☐

1b. TYPE OF WELL

OIL
WELL ☐

GAS
WELL ☒

Coalbed Methane

OTHER ☐

SINGLE

ZONE ☒

MULTIPLE

ZONE ☐

2. NAME OF OPERATOR 214/701-9106

TEXAKOMA OIL & GAS CORP. 22521

5400 LBJ Freeway, Suite 500

Dallas, TX 75240

3. ADDRESS OF OPERATOR 303/452-8888

PERMITCO INC. - Agent

13585 Jackson Drive

Denver, CO 80241

4. LOCATION OF WELL (Report location clearly and in accordance with any State requirements.)*

At Surface

1280' FSL and 510' FEL FUL

At proposed Prod. Zone

SW SW Sec. 11

14. DISTANCE IN MILES AND DIRECTION FROM NEAREST TOWN OR POST OFFICE*

7.5 miles northeast of Gobernador, NM

15. DISTANCE FROM PROPOSED* LOCATION TO NEAREST PROPERTY
OR LEASE LINE, FT. (Also to nearest drlg. unit line, if any)

510'

16. NO. OF ACRES IN LEASE

2136.56

18. DISTANCE FROM PROPOSED LOCATION* TO NEAREST WELL,
DRILLING, COMPLETED, OR APPLIED FOR ON THIS LEASE, FT.

Approx. 1 mile east

19. PROPOSED DEPTH

3350'

21. ELEVATIONS (Show whether DF, RT, GR, etc.)

6446' GR

This action is subject to technical and
procedural review pursuant to 43 CFR 3165.4
and appeal pursuant to 43 CFR 3165.4

23. PROPOSED CASING AND CEMENTING PROGRAM

SIZE OF HOLE	SIZE OF CASING	WEIGHT/FOOT	SETTING DEPTH
12-1/4"	9-5/8"	36#	300'
7-7/8"	7"	23#	3100'
6-1/4"	5-1/2"	14#	3000 - 3350'

17. NO. OF ACRES ASSIGNED TO THIS WELL

S/320

20. ROTARY OR CABLE TOOLS

Rotary

22. APPROX. DATE WORK WILL START*

Upon approval of this application.

Texakoma Oil & Gas Corp. proposes to a well to a depth of 3350' to test the Fruitland Coal formation for coalbed methane. If productive, casing will be run and the well completed. If dry, the well will be plugged and abandoned as per BLM and State of New Mexico requirements.

See Onshore Order No. 1 attached.

Texakoma Oil & Gas Corporation has been designated by proper lease interest owners to conduct operations on the above mentioned lease. Bonding will be provided by Texakoma Oil & Gas Corporation under their blanket BLM Bond (#B03920) and Statewide Bond No. B04001.

IN ABOVE SPACE DESCRIBE PROPOSED PROGRAM: If proposal is to deepen or plug back, give data on present productive zone and proposed new productive zone. If proposal is to drill or deepen directionally, give pertinent data on subsurface locations and measured and true vertical depths. Give blowout preventer program, if any.

24. SIGNED *[Signature]*

Consultant for:

TITLE Texakoma Oil & Gas Corp.

Date 06/15/93

(This space for Federal or State office use)

PERMIT NO.

APPROVAL DATE

APPROVED BY

TITLE

DATE

CONDITIONS OF APPROVAL, IF ANY

RECEIVED

OIL CON. DIV.,
DIST. 3

*See Instructions On Reverse Side

Title 18 U.S.C. Section 1001, makes it a crime for any person knowingly and willfully to make to any department or agency of the United States any false, fictitious or fraudulent statements or representations as to any matter within its jurisdiction.

C-104 Fm N54 @

AMC002

APPROVED
AS AMENDED

JUN 29 1993

DISTRICT MANAGER

RECEIVED
BLM
JUN 17 AM 11:11
CARMINGTON, NM

CONFIDENTIAL - TIGHT HOLE

Submit to Appropriate
District Office
State Lease - 4 copies
Fee Lease - 3 copies

State of New Mexico
Energy, Minerals and Natural Resources Department

Form C-102
Revised 1-1-89

OIL CONSERVATION DIVISION

DISTRICT I
P.O. Box 1980, Hobbs, NM 88240

P.O. Box 2088

Santa Fe, New Mexico 87504-2088

DISTRICT II
P.O. Drawer DD, Artesia, NM 88210

DISTRICT III
1000 Rio Brazos Rd., Aztec, NM 87410

WELL LOCATION AND ACREAGE DEDICATION PLAT

All Distances must be from the outer boundaries of the section

Operator TEXAKOMA O & G CORP.		Lease Phillips -Rio Arriba A		Well No. # 1
Unit Letter M	Section 11	Township 29 N.	Range 5 W.	County Rio Arriba
Actual Footage Location of Well: 1280 feet from the South line and 510 feet from the West line				
Ground level Elev. 6446'	Producing Formation Fruitland Coal	Pool Basin	Dedicated Acreage: 320 Acres	
<p>1. Outline the acreage dedicated to the subject well by colored pencil or hatchure marks on the plat below.</p> <p>2. If more than one lease is dedicated to the well, outline each and identify the ownership thereof (both as to working interest and royalty).</p> <p>3. If more than one lease of different ownership is dedicated to the well, have the interest of all owners been consolidated by communitization, unitization, force-pooling, etc.? <input type="checkbox"/> Yes <input type="checkbox"/> No If answer is "yes" type of consolidation _____</p> <p>If answer is "no" list the owners and tract descriptions which have actually been consolidated. (Use reverse side of this form if necessary.) _____</p> <p>No allowable will be assigned to the well until all interests have been consolidated (by communitization, unitization, forced-pooling, or otherwise) or until a non-standard unit, eliminating such interest, has been approved by the Division.</p>				

OPERATOR CERTIFICATION

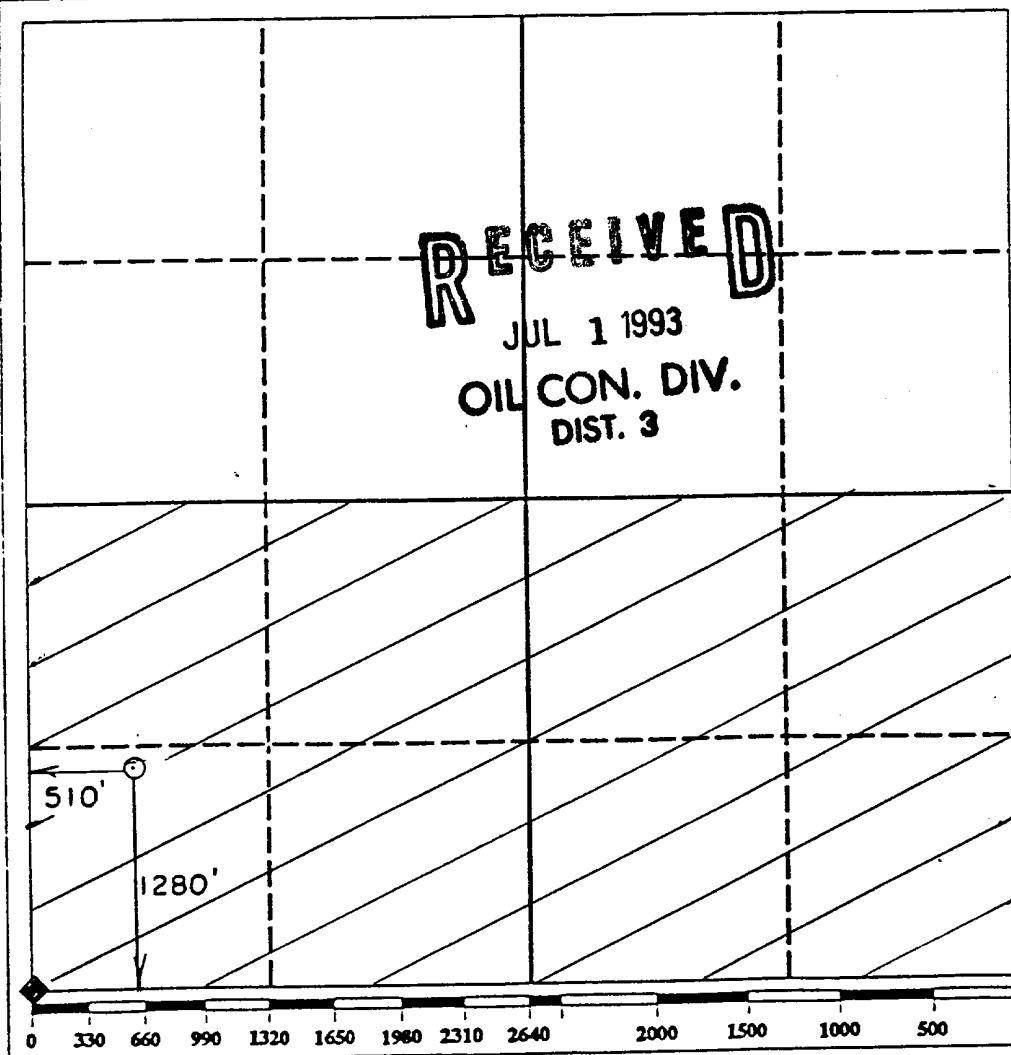
I hereby certify that the information contained herein is true and complete to the best of my knowledge and belief.

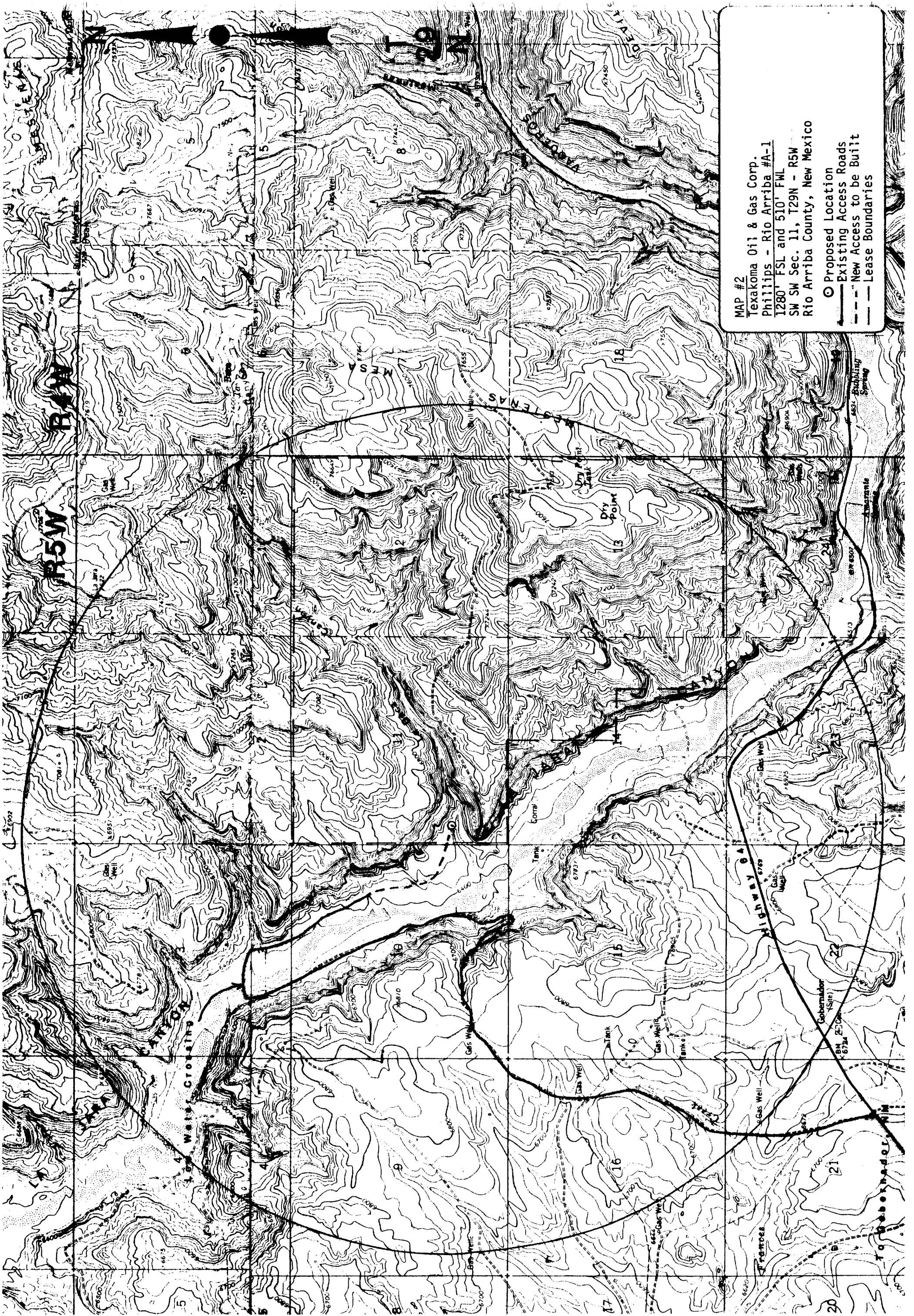
Signature
Lisa L. Smith
Printed Name
LISA L. SMITH
Position
Consultant for
Company
Texakoma Oil & Gas Corp.
Date
6/15/93

SURVEYOR CERTIFICATION

I hereby certify that the well location shown on this plat was plotted from field notes of actual surveys made by me or under my supervision, and that the same is true and correct to the best of my knowledge and belief.

Date Surveyed
6/15/93
Signature & Seal of Professional Surveyor
[Signature]
Certificate No.
68





MAP #2
Texakoma Oil & Gas Corp.
Phillips - Rio Arriba #A-1
1280' FSL and 510' FWL
SW SW Sec. 11, T29N - R5W
Rio Arriba County, New Mexico

○ Proposed Location
— Existing Access Roads
- - - New Access to be Built
--- Lease Boundaries