

District I  
PO Box 1980, Hobbs, NM 88241-1980  
District II  
811 S. 1st Street, Artesia, NM 88210-2834  
District III  
1000 Rio Brazos Rd., Aztec, NM 87410  
District IV  
2040 South Pacheco, Santa Fe, NM 87505

State of New Mexico  
Energy, Minerals & Natural Resources Department

OIL CONSERVATION DIVISION  
2040 South Pacheco  
Santa Fe, NM 87505

Form C-101  
Revised October 18, 1994  
Instructions on back  
Submit to Appropriate District Office  
State Lease - 6 Copies  
Fee Lease - 5 Copies

☐ AMENDED REPORT

APPLICATION FOR PERMIT TO DRILL, RE-ENTER, DEEPEN, PLUGBACK, OR ADD A ZONE

<sup>1</sup> Operator name and Address Phillips Petroleum Company 5525 Highway 64, NBU 3004 Farmington, NM 87401		<sup>2</sup> OGRID Number 017654
<sup>4</sup> Property Code 009257	<sup>5</sup> Property Name San Juan 29-6 Unit	<sup>3</sup> API Number 30-0 39-26-179
		<sup>6</sup> Well No. #29 B

<sup>7</sup> Surface Location									
UL or lot no.	Section	Township	Range	Lot. Idn	Feet from the	North/South Line	Feet from the	East/West line	County
C	3	29N	6W		755'	North	1380'	West	Rio Arriba

<sup>8</sup> Proposed Bottom Hole Location If Different From Surface									
UL or lot no.	Section	Township	Range	Lot. Idn	Feet from the	North/South Line	Feet from the	East/West line	County
C									
<sup>9</sup> Proposed Pool 1 Blanco Mesaverde 72319					<sup>10</sup> Proposed Pool 2 Basin Dakota 71599				

<sup>11</sup> Work Type Code N	<sup>12</sup> Well Type Code M	<sup>13</sup> Cable/Rotary R	<sup>14</sup> Lease Type Code P	<sup>15</sup> Ground Level Elevation 6379'
<sup>16</sup> Multiple Y	<sup>17</sup> Proposed Depth 7879'	<sup>18</sup> Formation Dakota	<sup>19</sup> Contractor 4CAT	<sup>20</sup> Spud Date 3rd Qtr 1999

<sup>21</sup> Proposed Casing and Cement Program					
Hole Size	Casing Size	Casing weight/foot	Setting Depth	Sacks of Cement	Estimated TOC
12-1/4"	9-5/8"	36#, J/K-55	350'	185 sx C1 H	Surface
8-3/4"	7"	20#, J/K-55	3614'	L-433sx C1H P0Z	
				T-100 sx C1 H	Surface
6-1/4"	4-1/2"	11.6# N-80	7879'	L-346sx C1H P0Z	**
					**

<sup>22</sup> Describe the proposed program. If this application is to DEEPEN or PLUG BACK give the data on the present productive zone and proposed new productive zone. Describe the blowout prevention program, if any. Use additional sheets if necessary

\*\* The 4-1/2" casing cement is designed to cover openhole section (with 60% excess).

Phillips has applied for downhole commingling in the 29-6 Unit, but approval has not been received to date. Plans are for this well to be commingled, but we will not commingle production until the approvals have been received.

<sup>23</sup> I hereby certify that the information given above is true and complete to the best of my knowledge and belief.

Signature:

Printed name:

Patsy Clugston

Title:

Regulatory Assistant

OIL CONSERVATION DIVISION

Approved by:

Title:

DEPUTY OIL & GAS INSPECTOR, DIST. #3

Approval Date:

Expiration Date:

HOLD C104 FOR DAK N5L

District I  
190 Box 1980, Hobbs, NM 88241-1980  
District II  
811 South First, Artesia, NM 88210  
District III  
10000 Rio Brazos Rd., Aztec, NM 87410  
District IV  
2040 South Pacheco, Santa Fe, NM 87505

State of New Mexico  
Energy, Minerals & Natural Resources Department

OIL CONSERVATION DIVISION  
2040 South Pacheco  
Santa Fe, NM 87505

Form C-102  
Revised October 18, 1994  
Instructions on back  
Submit to Appropriate District Office  
State Lease - 4 Copies  
Fee Lease - 3 Copies

☐ AMENDED REPORT

30-039-26179 WELL LOCATION AND ACREAGE DEDICATION PLAT

<sup>1</sup> API Number 009257	<sup>2</sup> Pool Code 72319	<sup>3</sup> Pool Name Blanco MV
<sup>4</sup> Property Code 9257	<sup>5</sup> Property Name SAN JUAN 29-6	<sup>6</sup> Well Number 29B
<sup>7</sup> OGRID No. 017654	<sup>8</sup> Operator Name PHILLIPS PETROLEUM COMPANY	<sup>9</sup> Elevation 6379'

<sup>10</sup> Surface Location

UL or lot no. C	Section 3	Township 29N	Range 6W	Lot Idn	Feet from the 755'	North/South line NORTH	Feet from the 1380'	East/West line WEST	County RIO ARriba
--------------------	--------------	-----------------	-------------	---------	-----------------------	---------------------------	------------------------	------------------------	----------------------

<sup>11</sup> Bottom Hole Location If Different From Surface

UL or lot no. C	Section	Township	Range	Lot Idn	Feet from the	North/South line	Feet from the	East/West line	County
--------------------	---------	----------	-------	---------	---------------	------------------	---------------	----------------	--------

<sup>12</sup> Dedicated Acres 320 W/2	<sup>13</sup> Joint or Infill I	<sup>14</sup> Consolidation Code U	<sup>15</sup> Order No. DHC application has been submitted
--	------------------------------------	---------------------------------------	---

NO ALLOWABLE WILL BE ASSIGNED TO THIS COMPLETION UNTIL ALL INTERESTS HAVE BEEN CONSOLIDATED OR A NON-STANDARD UNIT HAS BEEN APPROVED BY THE DIVISION

16	S89°58"W	5280.00'	<sup>17</sup> OPERATOR CERTIFICATION I hereby certify that the information contained herein is true and complete to the best of my knowledge and belief  Signature Patsy Clugston Printed Name Regulatory Assistant Title May 12, 1999 Date
1380'	FEE Gomez Y. Gomez	5264.82'	<sup>18</sup> SURVEYOR CERTIFICATION I hereby certify that the well location shown on this plat was plotted from field notes of actual surveys made by me or under my supervision, and that the same is true and correct to the best of my belief.  03/25/99 Date of Survey Signature and Seal of Professional Surveyor:  HENRY P. BROADHURST, JR. NEW MEXICO REGISTERED PROFESSIONAL SURVEYOR Certificate Number 122834
5273.40'	Section 3	5268.12'	
S00°00'E	S89°05'E		

District I  
100 Box 1980, Hobbs, NM 88241-1980  
District II  
811 South First, Artesia, NM 88210  
District III  
1000 Rio Brazos Rd., Aztec, NM 87410  
District IV  
2040 South Pacheco, Santa Fe, NM 87505

State of New Mexico  
Energy, Minerals & Natural Resources Department

OIL CONSERVATION DIVISION  
2040 South Pacheco  
Santa Fe, NM 87505

Form C-102  
Revised October 18, 1994  
Instructions on back  
Submit to Appropriate District Office  
State Lease - 4 Copies  
Fee Lease - 3 Copies  
☐ AMENDED REPORT

WELL LOCATION AND ACREAGE DEDICATION PLAT

1. Well Number 30-0387-26179		2. Pool Code 71599		3. Pool Name Blanco DK	
4. Property Code 009257		5. Property Name SAN JUAN 29-6			6. Well Number 29B
7. OGRID No. 017654		8. Operator Name PHILLIPS PETROLEUM COMPANY			9. Elevation 6379'

10. Surface Location

UL or lot no. C	Section 3	Township 29N	Range 6W	Lot Idn	Feet from the 755'	North/South line NORTH	Feet from the 1380'	East/West line WEST	County RIO ARriba
--------------------	--------------	-----------------	-------------	---------	-----------------------	---------------------------	------------------------	------------------------	----------------------

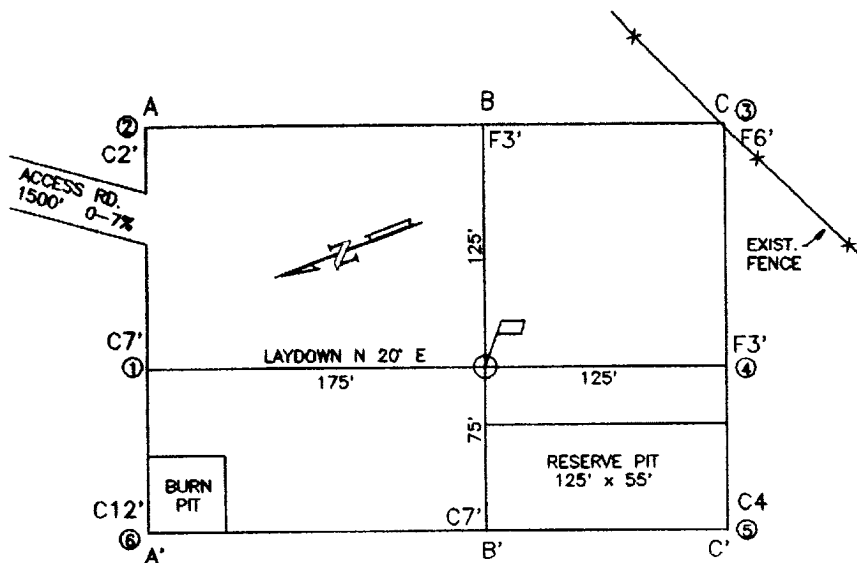
11. Bottom Hole Location If Different From Surface

UL or lot no. C	Section	Township	Range	Lot Idn	Feet from the	North/South line	Feet from the	East/West line	County
--------------------	---------	----------	-------	---------	---------------	------------------	---------------	----------------	--------

12. Dedicated Acres 320 W/2	13. Joint or Infill	14. Consolidation Code U	15. Order No. DHC application & unorthodox location applications submitted.
--------------------------------	---------------------	-----------------------------	--

NO ALLOWABLE WILL BE ASSIGNED TO THIS COMPLETION UNTIL ALL INTERESTS HAVE BEEN CONSOLIDATED OR A NON-STANDARD UNIT HAS BEEN APPROVED BY THE DIVISION

		<b>17. OPERATOR CERTIFICATION</b> I hereby certify that the information contained herein is true and complete to the best of my knowledge and belief.  Signature: <u>Patsy Clugston</u> Printed Name: <u>Patsy Clugston</u> Title: <u>Regulatory Assistant</u> Date: <u>May 12, 1999</u>	
<b>18. SURVEYOR CERTIFICATION</b> I hereby certify that the well location shown on this plat was plotted from field notes of actual surveys made by me or under my supervision, and that the same is true and correct to the best of my belief.  Date of Survey: <u>03/25/99</u> Signature and Seal of Professional Surveyor:  			



ELEVATION A-A'

C/L

6399				
6389				
6379				
6369				
6359				

B-B'

C/L

6399				
6389				
6379				
6369				
6359				

C-C'

C/L

6399				
6389				
6379				
6369				
6359				

COMPANY: PHILLIPS PETROLEUM COMPANY

LEASE: SAN JUAN 29-6 UNIT No.29B

FOOTAGE: 755' FNL, 1380' FWL UNIT C

SEC. 3 TWN. 29-N RNG. 06-W N.M.P.M.

COUNTY, RIO ARRIBA STATE, N.M.

ELEVATION: 6379

LATITUDE: 36-45-34

LONGITUDE: 107-27-12



PHILLIPS PETROLEUM COMPANY  
FARMINGTON, NEW MEXICO

SURVEYED: 3/25/99

REV. DATE:

APP. BY H.B.

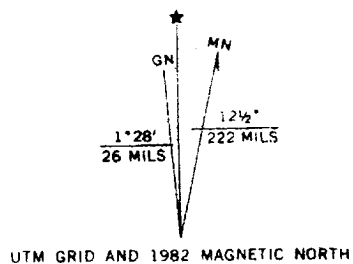
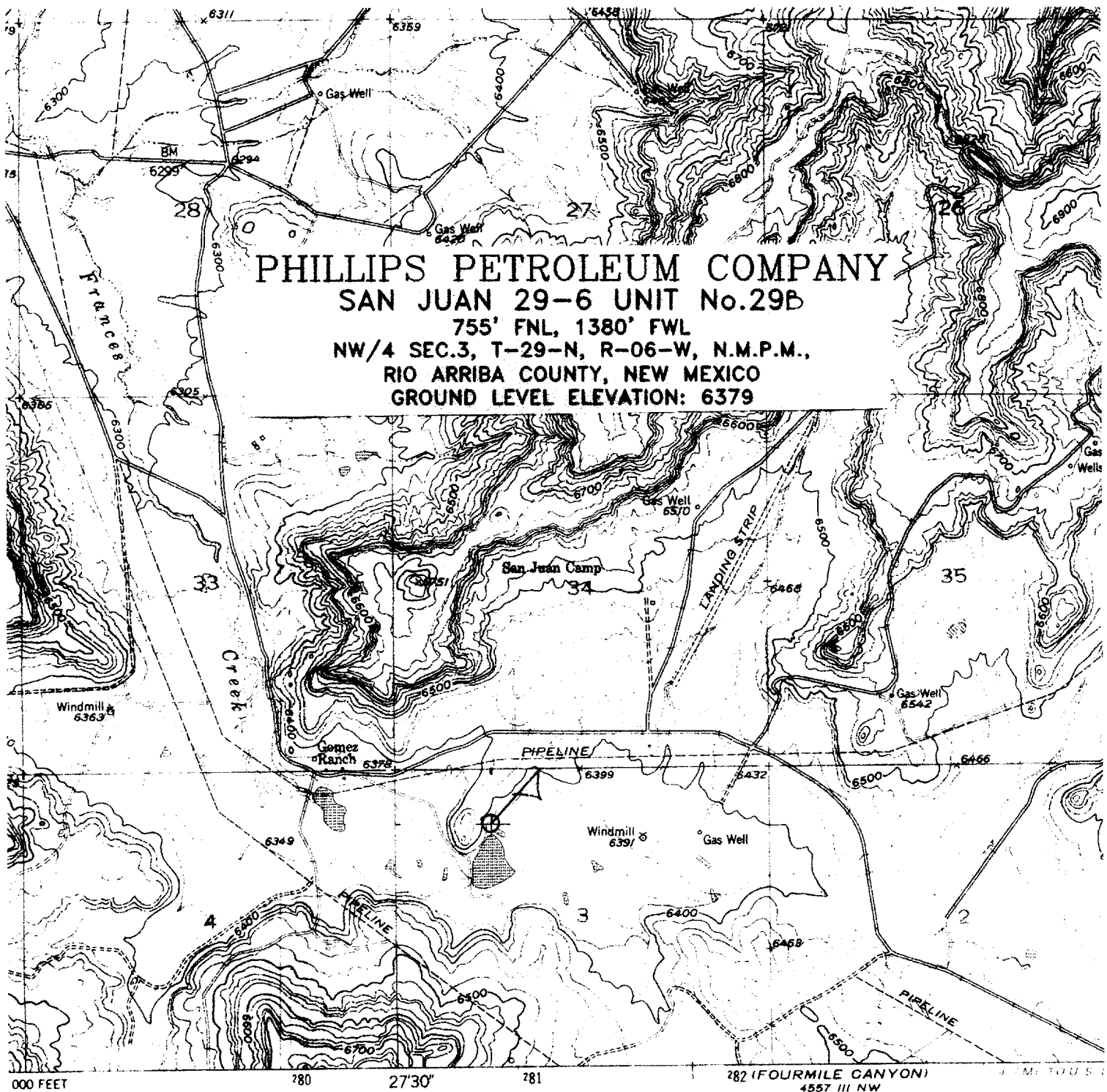
DRAWN BY: T.G.

DATE DRAWN: 3/30/99

FILE NAME: P008001

UNITED  
FIELD SERVICES INC.

P.O. BOX 3651  
FARMINGTON, NM 87499  
OFFICE: (505)334-0408



**GOMEZ RANCH QUADRANGLE**

**GEOLOGIC PROGNOSIS**

Company: **Phillips Petroleum Company**  
 Project: **1999 Drilling Plan**  
 Area: **San Juan 29-6 Unit**  
  
 Operator: **Phillips Petroleum Company**  
 Well Name: **San Juan 29-6 Unit No. 29B (Kmv/Kd)**  
 Location: **NENW 03-29N-06W**  
 Footage: **0755' FNL & 1380' FWL**  
 County/State: **Rio Arriba/New Mexico**

Ungraded GL: **6379** Est. (15') KB: **6394**

<b><u>Formation</u></b>	<b><u>Thickness</u></b>	<b><u>Depth</u></b>	<b><u>Struct. Elev.</u></b>
San Jose Fm.	1354	Surface	6379
Nacimiento Fm.	1105	1354	5040
Ojo Alamo Ss.	110	2459	3935
Kirtland Sh.	390	2569	3825
Fruitland Fm.	345	2959	3435
Pictured Cliffs Ss.	220	3304	3090
Lewis Sh.	90	3524	2870
<b><u>Int. Csg. Depth</u></b>	<b>1175</b>	<b>3614</b>	<b>2780</b>
<b><u>Green Marker</u></b>	<b>330</b>	<b>4789</b>	<b>1605</b>
Cliff House Ss.	80	5119	1275
Menefee Fm.	295	5199	1195
Point Lookout Ss.	295	5494	900
Mancos Sh.	950	5789	605
Gallup Ss.	720	6739	-345
Greenhorn Ls.	55	7459	-1065
Graneros Sh.	140	7514	-1120
Dakota Ss.	225	7654	-1260
<b><u>Total Depth</u></b>	<b>NA</b>	<b>7879</b>	<b>-1485</b>

**Mechanical Logs:** DIL from surface casing to TD;  
CNL/FDC over intervals of interest.

**Correlation Logs:** San Juan 29-6 Unit No. 29A (SENW 03-29N-06W)  
San Juan 30-6 Unit No. 61 (SESW 34-30N-06W)  
San Juan 30-6 Unit No. 31 (SESE 33-30N-06W)

**Estimated intervals of water, oil and gas:**

Water:	Ojo Alamo	2459-2569
Gas & Water:	Fruitland	2959-3304
Gas:	Pictured Cliffs	3304-3524
	Mesaverde	5119-5789
	Dakota	7654-7879

John E. Bircher

May 10, 1999