

District I  
PO Box 1980, Hobbs, NM 88241-1980  
District II  
811 S. 1st Street, Artesia, NM 88210-2834  
District III  
1000 Rio Brazos Rd., Aztec, NM 87410  
District IV  
2040 South Pacheco, Santa Fe, NM 87505

State of New Mexico  
Energy, Minerals & Natural Resources Department

OIL CONSERVATION DIVISION  
2040 South Pacheco  
Santa Fe, NM 87505

Form C-101  
Revised October 18, 1994  
Instructions on back  
Submit to Appropriate District Office  
State Lease - 6 Copies  
Fee Lease - 5 Copies

☐ AMENDED REPORT

APPLICATION FOR PERMIT TO DRILL, RE-ENTER, DEEPEN, PLUG BACK, OR ADD A ZONE

<sup>1</sup> Operator name and Address Phillips Petroleum Company 5525 Highway 64, NBU 3004 Farmington, NM 87401		<sup>2</sup> OGRID Number 017654
<sup>4</sup> Property Code 009257	<sup>5</sup> Property Name San Juan 29-6 Unit	<sup>3</sup> API Number 30-0 39-26338
		<sup>6</sup> Well No. 101M

<sup>7</sup> Surface Location									
UL or lot no.	Section	Township	Range	Lot. Idn	Feet from the	North/South Line	Feet from the	East/West line	County
P	36	29N	6W		1063'	South	115'	East	Rio Arriba

<sup>8</sup> Proposed Bottom Hole Location If Different From Surface									
UL or lot no.	Section	Township	Range	Lot. Idn	Feet from the	North/South Line	Feet from the	East/West line	County
P									
<sup>9</sup> Proposed Pool 1 Blanco Mesaverde 72319					<sup>10</sup> Proposed Pool 2 Basin Dakota 71599				

<sup>11</sup> Work Type Code N	<sup>12</sup> Well Type Code M	<sup>13</sup> Cable/Rotary R	<sup>14</sup> Lease Type Code S	<sup>15</sup> Ground Level Elevation 6477'
<sup>16</sup> Multiple yes	<sup>17</sup> Proposed Depth 7859'	<sup>18</sup> Formation Dakota	<sup>19</sup> Contractor 4CAT-Key Energy	<sup>20</sup> Spud Date 2nd Qtr 2000

<sup>21</sup> Proposed Casing and Cement Program					
Hole Size	Casing Size	Casing weight/foot	Setting Depth	Sacks of Cement	Estimated TOC
12-1/4"	9-5/8"	36#, J/K-55	320'*	158.5 Type III	surface
8-3/4"	7"	20#, J/K-55	3787'	L-347 Type III	
				T-100 Type III	surface
6-1/4"	4-1/2"	11.8#, N-80	7859'	245 Class H	**

<sup>22</sup> Describe the proposed program. If this application is to DEEPEN or PLUG BACK give the data on the present productive zone and proposed new productive zone. Describe the blowout prevention program, if any. Use additional sheets if necessary

- \* The surface casing will be set at a minimum of 320', but could be set deeper if required to maintain hole stability.
- \*\* The cement for the 4-1/2" casing is designed to cover the openhole section to 100' above the Cliffhouse Sandstone. Circulation/squeeze cementing will be conducted to isolate the Lewis Shale interval prior to its completion

See attached for Cathodic Protection details for this well.

<sup>23</sup> I hereby certify that the information given above is true and complete to the best of my knowledge and belief.

Signature: *Ratsy Clugston*

Printed name: Ratsy Clugston

Title: Sr. Regulatory/Proration Clerk

OIL CONSERVATION DIVISION

Approved by: *SSS*

Title: SUPERVISOR DISTRICT #8

Approval Date: FEB - 2 2000

Expiration Date: FEB - 2 2000

HOLD C104 FOR NSL

District I  
 PO Box 1980, Hobbs, NM 88241-1980  
 District II  
 811 South First, Artesia, NM 88210  
 District III  
 1000 Rio Brazos Rd., Aztec, NM 87410  
 District IV  
 2040 South Pacheco, Santa Fe, NM 87505

State of New Mexico  
 Energy, Minerals & Natural Resources Department

OIL CONSERVATION DIVISION  
 2040 South Pacheco  
 Santa Fe, NM 87505

Form C-102  
 Revised October 18, 1994  
 Instructions on back  
 Submit to Appropriate District Office  
 State Lease - 4 Copies  
 Fee Lease - 3 Copies

☐ AMENDED REPORT

WELL LOCATION AND ACREAGE DEDICATION PLAT

1 API Number 30-039-26338		2 Pool Code 71599		3 Pool Name Basin Dakota	
4 Property Code 009257		5 Property Name SAN JUAN 29-6 UNIT			
6 OGRID No. 017654		7 Operator Name PHILLIPS PETROLEUM COMPANY			
				8 Well Number 101M	
				9 Elevation 6477'	

10 Surface Location

UL or lot no.	Section	Township	Range	Lot Idn	Feet from the	North/South line	Feet from the	East/West line	County
P	36	29N	6W		1063'	SOUTH	115'	EAST	RIO ARriba

11 Bottom Hole Location If Different From Surface

UL or lot no.	Section	Township	Range	Lot Idn	Feet from the	North/South line	Feet from the	East/West line	County
P									

12 Dedicated Acres 234.16 E/2	13 Joint or Infill I	14 Consolidation Code U	15 Order No.
----------------------------------	-------------------------	----------------------------	--------------

NO ALLOWABLE WILL BE ASSIGNED TO THIS COMPLETION UNTIL ALL INTERESTS HAVE BEEN CONSOLIDATED OR A NON-STANDARD UNIT HAS BEEN APPROVED BY THE DIVISION

<div data-bbox="89 957 121 989">16</div> <div data-bbox="365 957 503 989">S89°56'W</div> <div data-bbox="609 957 738 989">4570.50'</div> <div data-bbox="89 1266 121 1404">5280.00'</div> <div data-bbox="89 1489 121 1627">N00°03'E</div> <div data-bbox="1006 1244 1039 1383">5280.00'</div> <div data-bbox="1006 1500 1039 1596">NORTH</div> <div data-bbox="219 1149 397 1298"> </div> <div data-bbox="479 1393 657 1425">Section 36</div> <div data-bbox="609 1457 779 1521">E-289-46 520 acres</div> <div data-bbox="503 1862 649 1893">S89°58'E</div> <div data-bbox="267 1904 397 1947">2640.00'</div> <div data-bbox="617 1904 755 1947">1320.60'</div> <div data-bbox="820 1904 941 1947">611.00'</div>		<div data-bbox="1063 936 1534 978">17 OPERATOR CERTIFICATION</div> <div data-bbox="1063 978 1534 1032">I hereby certify that the information contained herein is true and complete to the best of my knowledge and belief</div> <div data-bbox="1063 1085 1534 1202"> </div> <div data-bbox="1063 1181 1534 1244">Signature Patsy Clugston</div> <div data-bbox="1063 1244 1534 1308">Printed Name Sr. Regulatory Clerk</div> <div data-bbox="1063 1308 1534 1372">Title January 25, 2000</div> <div data-bbox="1063 1372 1534 1415">Date</div>
<div data-bbox="1063 1415 1534 1457">18 SURVEYOR CERTIFICATION</div> <div data-bbox="1063 1457 1534 1564">I hereby certify that the well location shown on this plat was plotted from field notes of actual surveys made by me or under my supervision, and that the same is true and correct to the best of my belief.</div> <div data-bbox="1063 1574 1534 1627">11/16/99</div> <div data-bbox="1063 1627 1534 1670">Date of Survey</div> <div data-bbox="1063 1670 1534 1883"> </div> <div data-bbox="1063 1649 1534 1713">Signature and Seal of Professional Surveyor</div> <div data-bbox="1063 1713 1534 1883"> </div> <div data-bbox="1063 1862 1534 1904">Certificate Number</div>		

District I  
 PO Box 1980, Hobbs, NM 88241-1980  
 District II  
 811 South First, Artesia, NM 88210  
 District III  
 1000 Rio Brazos Rd., Aztec, NM 87410  
 District IV  
 2040 South Pacheco, Santa Fe, NM 87505

State of New Mexico  
 Energy, Minerals & Natural Resources Department

OIL CONSERVATION DIVISION  
 2040 South Pacheco  
 Santa Fe, NM 87505

Form C-102  
 Revised October 18, 1994  
 Instructions on back  
 Submit to Appropriate District Office  
 State Lease - 4 Copies  
 Fee Lease - 3 Copies

☐ AMENDED REPORT

WELL LOCATION AND ACREAGE DEDICATION PLAT

<sup>1</sup> API Number 30-039-26338		<sup>2</sup> Pool Code 72319	<sup>3</sup> Pool Name Blanco Mesaverde
<sup>4</sup> Property Code 009257	<sup>5</sup> Property Name SAN JUAN 29-6 UNIT		<sup>6</sup> Well Number 101M
<sup>7</sup> OGRID No. 071654	<sup>8</sup> Operator Name PHILLIPS PETROLEUM COMPANY		<sup>9</sup> Elevation 6477'

<sup>10</sup> Surface Location

UL or lot no.	Section	Township	Range	Lot Ida	Feet from the	North/South line	Feet from the	East/West line	County
P	36	29N	6W		1063'	SOUTH	115'	EAST	RIO ARriba

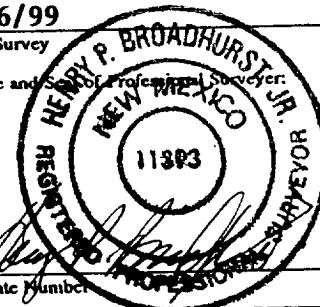
<sup>11</sup> Bottom Hole Location If Different From Surface

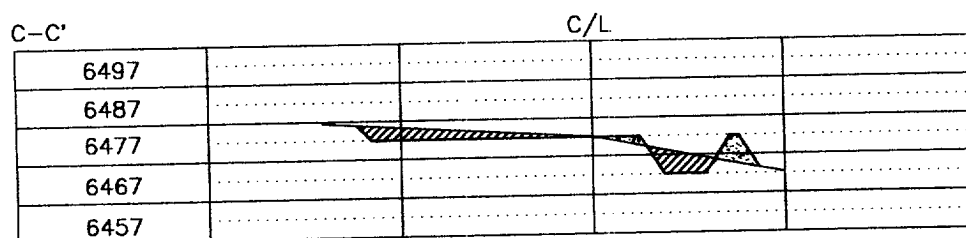
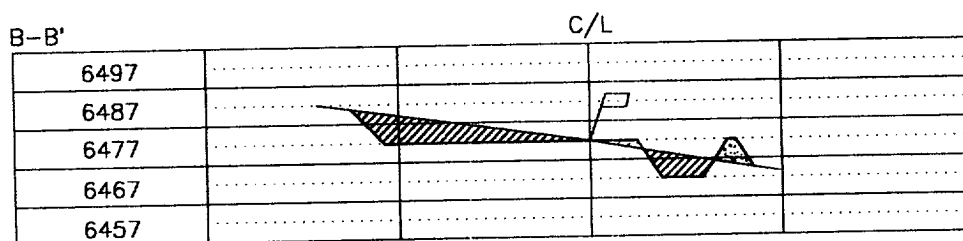
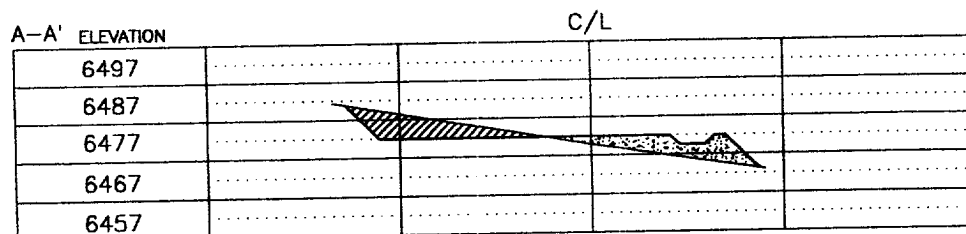
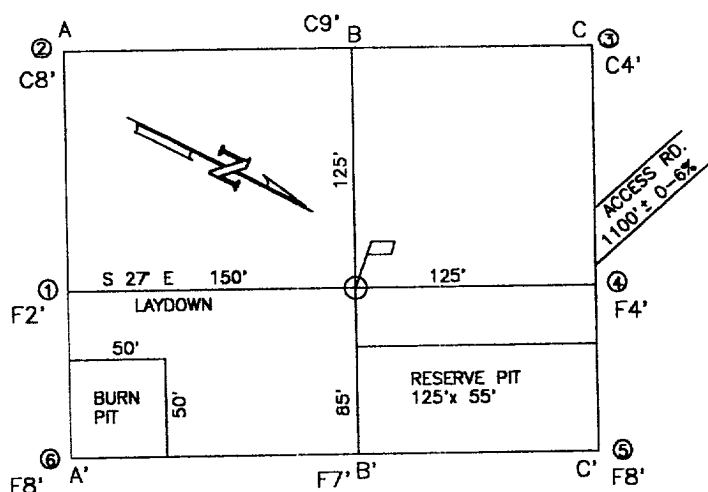
UL or lot no.	Section	Township	Range	Lot Ida	Feet from the	North/South line	Feet from the	East/West line	County
P									

<sup>12</sup> Dedicated Acres	<sup>13</sup> Joint or Infill	<sup>14</sup> Consolidation Code	<sup>15</sup> Order No.
234.16 E/2	I	U	

NO ALLOWABLE WILL BE ASSIGNED TO THIS COMPLETION UNTIL ALL INTERESTS HAVE BEEN CONSOLIDATED OR A NON-STANDARD UNIT HAS BEEN APPROVED BY THE DIVISION

<div style="display: flex; flex-direction: column; align-items: center;"> <div>16</div> <div>5280.00'</div> <div>N00°03'E</div> <div>2640.00'</div> </div>	<div style="display: flex; justify-content: space-between;"> <div>S89°56'W</div> <div>4570.50'</div> </div>	<div style="display: flex; flex-direction: column; align-items: center;"> <div>1</div> <div>2</div> <div>3</div> <div>4</div> </div>	<div style="display: flex; flex-direction: column; align-items: center;"> <div>5280.00'</div> <div>NORTH</div> </div>	<p><sup>17</sup> OPERATOR CERTIFICATION</p> <p>I hereby certify that the information contained herein is true and complete to the best of my knowledge and belief</p> <p><i>Patsy Clugston</i></p> <p>Signature Patsy Clugston</p> <p>Printed Name Sr. Regulatory Clerk</p> <p>Title January 25, 2000</p> <p>Date</p>
	<p>Section 36</p> <p>E-289-46 520 acres</p>		<p><sup>18</sup> SURVEYOR CERTIFICATION</p> <p>I hereby certify that the well location shown on this plat was plotted from field notes of actual surveys made by me or under my supervision, and that the same is true and correct to the best of my belief.</p> <p>11/16/99</p> <p>Date of Survey</p> <p>Signature and Seal of Professional Surveyor:</p>	
	<p>S89°58'E</p>		<p>115'</p> <p>1063'</p>	
	<p>1320.60'</p>		<p>611.00'</p>	





COMPANY: PHILLIPS PETROLEUM CO.

LEASE: SAN JUAN 29-6 UNIT No. 101M

FOOTAGE: 1063 FSL 115 FEL UNIT P


SEC. 36 TWN. 29 N RNG. 6 W N.M.P.M.

COUNTY: RIO ARRIBA STATE: N.M.

ELEVATION: 6477

LATITUDE: 36-40-41

LONGITUDE: 107-24-41

 <b>PHILLIPS PETROLEUM CO.</b> FARMINGTON, NEW MEXICO		
SURVEYED: 11/16/99	REV. DATE:	APP. BY
DRAWN BY: K.REA	DATE DRAWN: 11/20/99	FILE NAME: UF013
<b>UNITED</b> <b>FIELD SERVICES INC.</b>		P.O. BOX 3651 FARMINGTON, NM 87499 OFFICE: (505)334-0408

PHILLIPS PETROLEUM COMPANY

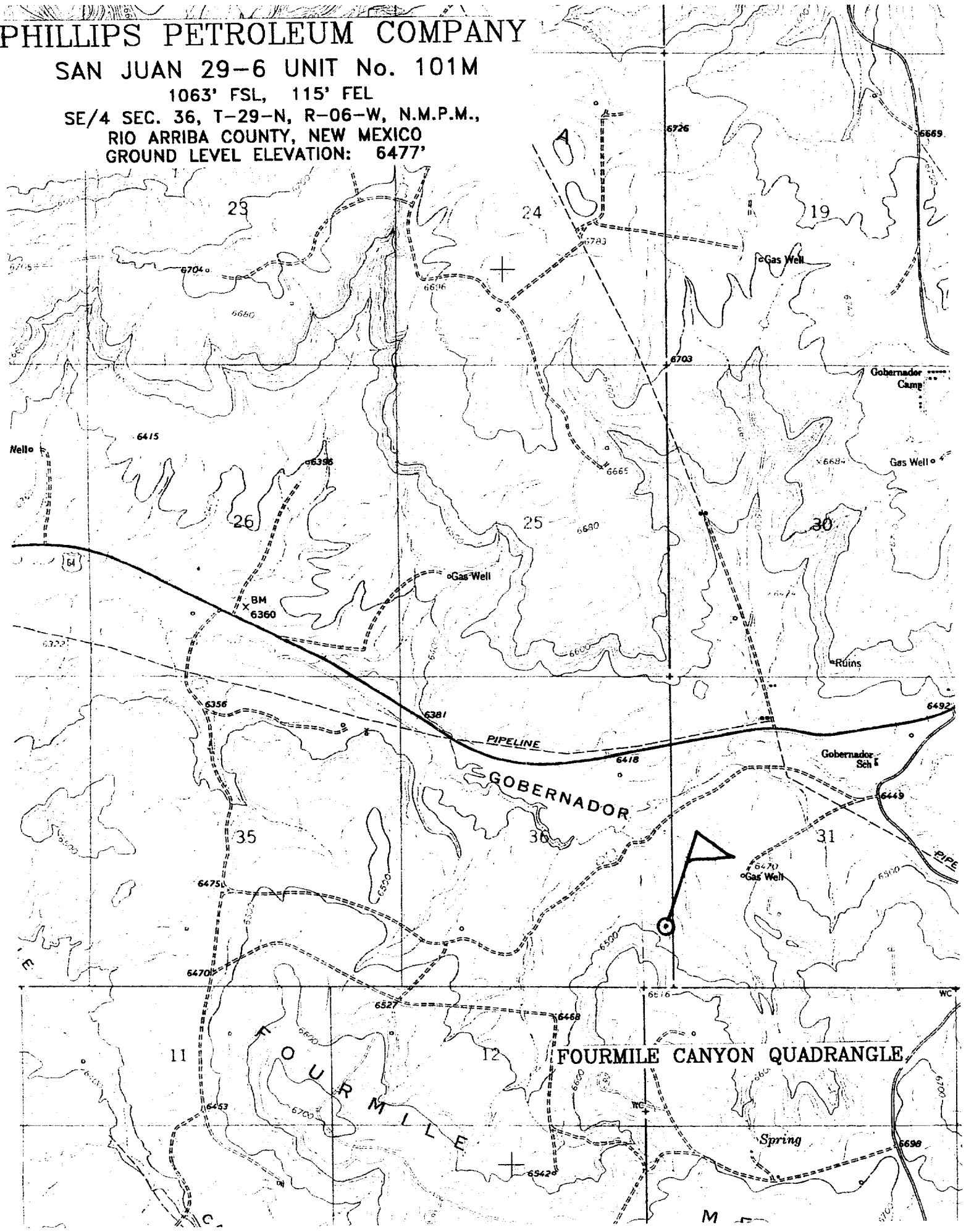
SAN JUAN 29-6 UNIT No. 101M

1063' FSL, 115' FEL

SE/4 SEC. 36, T-29-N, R-06-W, N.M.P.M.,

RIO ARriba COUNTY, NEW MEXICO

GROUND LEVEL ELEVATION: 6477'



**San Juan 29-6 Unit #101M (DK/MV)**

**SURFACE CASING :**

Drill Bit Diameter	12.25 "	
Casing Outside Diameter	9.625 "	8.913
Casing Weight	36 ppf	
Casing Grade	J-55	
Shoe Depth	320 '	
Cement Yield	1.41 cuft/sk	
Excess Cement	110 %	

Hole / Casing Annulus Capacity 0.0558 bbl/f 0.3132 cuft/ft

**Cement Required 158.5 sx**

**SHOE 320 ', 9.625 ", 36 ppf, J-55**

**INTERMEDIATE CASING :**

Drill Bit Diameter	8.75 "	
Casing Outside Diameter	7 "	6.455
Casing Weight	20 ppf	
Casing Grade	J-55	
Shoe Depth	3784 '	
Lead Cement Yield	2.9 cuft/sk	
Lead Cement Excess	110 %	
Tail Cement Length	446.5 '	
Tail Cement Yield	1.41 cuft/sk	
Tail Cement Excess	110 %	

Casing / Casing Annulus Capacity 0.0296 bbl/f 0.1660 cuft/ft

Hole / Casing Annulus Capacity 0.0268 bbl/f 0.1503 cuft/ft

Casing Capacity 0.0405 bbl/f 0.2272 cuft/ft

**Lead Cement Required 346.8 sx**

**Tail Cement Required 100.0 sx**

**SHOE 3784 ', 7 ", 20 ppf, J-55**

**PRODUCTION CASING :**

Drill Bit Diameter	6.25 "	
Casing Outside Diameter	4.5 "	4.000
Casing Weight	11.6 ppf	
Casing Grade	N-80	
Top of Cement	5059 '	100' above top of Cliff House
Shoe Depth	7859 '	
Cement Yield	2.13 cuft/sk	
Cement Excess	60 %	

Casing / Casing Annulus Capacity 0.0208 bbl/f 0.1168 cuft/ft

Hole / Casing Annulus Capacity 0.0183 bbl/f 0.1026 cuft/ft

Casing Capacity 0.0155 bbl/f 0.0872 cuft/ft

**Cement Required 245.0 sx**

**SHOE 7859 ', 4.5 ", 11.6 ppf, N-80**

**San Juan 29-6 Unit #101M  
E-289-46; Unit P, 1063' FSL & 115' FEL  
Section 36, T29N, R6W; Rio Arriba County, NM**

**Cathodic Protection**

Phillips proposes to drill a cathodic protection deep well groundbed for the subject well. Will drill a 6-7/8" hole to an anticipated minimum depth of 300' (maximum depth of 500'). Cement plugs will not be used unless more than one water zone is encountered. Prior drilling history for the area indicates only one zone to that depth. If more than one water zone is encountered, notification will be made and details of cement and casing will be provided.

All drilling activity will remain on existing well pad and a Farmington based company will be doing the drilling for Phillips.