

Submit 3 Copies To Appropriate District Office
 District I
 1625 N. French Dr., Hobbs, NM 87240
 District II
 811 South First, Artesia, NM 87210
 District III
 1000 Rio Brazos Rd., Aztec, NM 87410
 District IV
 2040 South Pacheco, Santa Fe, NM 87505

State of New Mexico
 Energy, Minerals and Natural Resources

Form C-103
 Revised March 25, 1999

OIL CONSERVATION DIVISION
 2040 South Pacheco
 Santa Fe, NM 87505

WELL API NO. 30-039-26338	
5. Indicate Type of Lease STATE <input checked="" type="checkbox"/> FEE <input type="checkbox"/>	
6. State Oil & Gas Lease No. E-289-46	
7. Lease Name or Unit Agreement Name: San Juan 29-6 Unit 009257	
8. Well No. SJ 29-6 Unit #101M	
9. Pool name or Wildcat Blanco MV - 72319; Basin DK - 71599	
10. Elevation (Show whether DR, RKB, RT, GR, etc.) 6492'	

SUNDRY NOTICES AND REPORTS ON WELLS
 (DO NOT USE THIS FORM FOR PROPOSALS TO DRILL OR TO DEEPEN OR PLUG BACK TO A DIFFERENT RESERVOIR. USE "APPLICATION FOR PERMIT" (FORM G-101) FOR SUCH PROPOSALS.)

1. Type of Well:
 Oil Well Gas Well Other

2. Name of Operator
 Phillips Petroleum Company 017654

3. Address of Operator
 5525 Highway 64, NBU 3004, Farmington, NM 87401

4. Well Location
 Unit Letter 0 : 792' feet from the South line and 1137' feet from the East line
 Section 36 Township 29N Range 6W NMPM County Rio Arriba

10. Elevation (Show whether DR, RKB, RT, GR, etc.)
 6492'

11. Check Appropriate Box to Indicate Nature of Notice, Report, or Other Data

NOTICE OF INTENTION TO: PERFORM REMEDIAL WORK <input type="checkbox"/> PLUG AND ABANDON <input type="checkbox"/> TEMPORARILY ABANDON <input type="checkbox"/> CHANGE PLANS <input type="checkbox"/> PULL OR ALTER CASING <input type="checkbox"/> MULTIPLE COMPLETION <input type="checkbox"/> OTHER: Moved to make a standard location <input checked="" type="checkbox"/>		SUBSEQUENT REPORT OF: REMEDIAL WORK <input type="checkbox"/> ALTERING CASING <input type="checkbox"/> COMMENCE DRILLING OPNS. <input type="checkbox"/> PLUG AND ABANDONMENT <input type="checkbox"/> CASING TEST AND CEMENT JOB <input type="checkbox"/> OTHER: <input type="checkbox"/>	
--	--	---	--

12. Describe Proposed or Completed Operations (Clearly state all pertinent details, and give pertinent dates, including estimated date of starting any proposed work). SEE RULE 1103. For Multiple Completions: Attach wellbore diagram of proposed completion or recompilation.

The subject well has been moved to the above location making it a standard location. The only changed from the original APD dated 2/2/00 is that the cement for the production string is designed to cover the openhole interval with 60% excess and annular volume 100' within intermediate casing shoe. Depending on hole conditions the well may be cemented in a single stage or two staged.

I hereby certify that the information above is true and complete to the best of my knowledge and belief.

SIGNATURE Patsy Clugston TITLE Sr. Regulatory/Proration Clerk DATE 4/24/00

Type or print name Patsy Clugston Telephone No. 505-599-3454

(This space for State use)
 APPROVED BY Charlie T Herrin TITLE DEPUTY OIL & GAS INSPECTOR, DIST. DATE APR 25 2000
 Conditions of approval, if any:

District I
 PO Box 1980, Hobbs, NM 88241-1980
 District II
 811 South First, Artesia, NM 88210
 District III
 1000 Rio Brazos Rd., Aztec, NM 87410
 District IV
 2040 South Pacheco, Santa Fe, NM 87505

State of New Mexico
 Energy, Minerals & Natural Resources Department

Form C-102
 Revised October 18, 1994
 Instructions on back
 Submit to Appropriate District Office
 State Lease - 4 Copies
 Fee Lease - 3 Copies

OIL CONSERVATION DIVISION
 2040 South Pacheco
 Santa Fe, NM 87505

AMENDED REPORT

WELL LOCATION AND ACREAGE DEDICATION PLAT

1 API Number 30-039-26338		2 Pool Code 72319		3 Pool Name Blanco Mesaverde	
4 Property Code 009257		5 Property Name SAN JUAN 29-6 UNIT			6 Well Number 101M
7 OGRID No. 017654		8 Operator Name PHILLIPS PETROLEUM COMPANY			9 Elevation 6492'

10 Surface Location

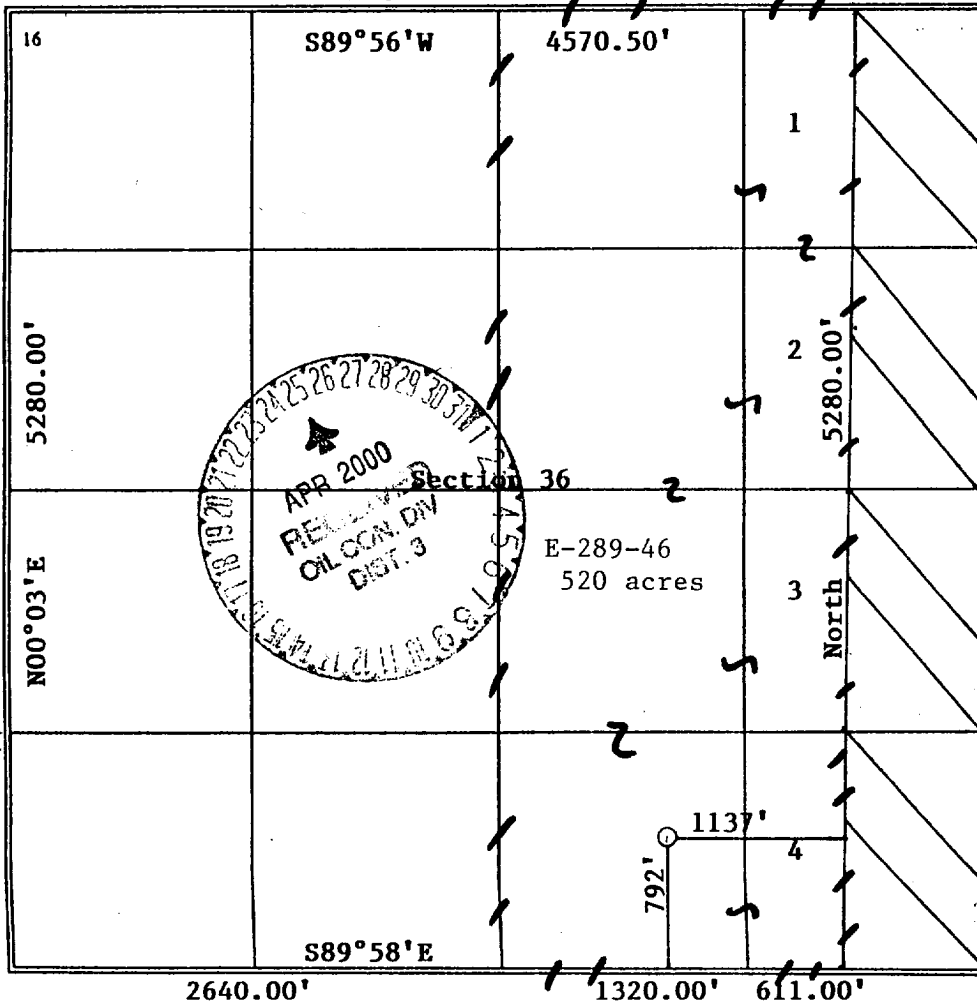
Ul. or lot no.	Section	Township	Range	Lot Idn	Feet from the	North/South line	Feet from the	East/West line	County
0	36	29N	6W		792'	SOUTH	1137'	EAST	RIO ARRIBA

11 Bottom Hole Location If Different From Surface

Ul. or lot no.	Section	Township	Range	Lot Idn	Feet from the	North/South line	Feet from the	East/West line	County
0									

12 Dedicated Acres	13 Joint or Infill	14 Consolidation Code	15 Order No.
234.16 E/2	I	U	

NO ALLOWABLE WILL BE ASSIGNED TO THIS COMPLETION UNTIL ALL INTERESTS HAVE BEEN CONSOLIDATED OR A NON-STANDARD UNIT HAS BEEN APPROVED BY THE DIVISION



17 OPERATOR CERTIFICATION
 I hereby certify that the information contained herein is true and complete to the best of my knowledge and belief

Patsy Clugston
 Signature
 Patsy Clugston
 Printed Name
 Sr. Regulatory Clerk
 Title
 4-24-00
 Date

18 SURVEYOR CERTIFICATION
 I hereby certify that the well location shown on this plat was plotted from field notes of actual surveys made by me or under my supervision, and that the same is true and correct to the best of my belief.

04/18/2000
 Date of Survey
 Signature and Seal of Professional Surveyer:

 Certification Number

District I
 1901 Box 1980, Hobbs, NM 88241-1980
 District II
 811 South First, Artesia, NM 88210
 District III
 1000 Rio Brazos Rd., Aztec, NM 87410
 District IV
 2040 South Pacheco, Santa Fe, NM 87505

State of New Mexico
 Energy, Minerals & Natural Resources Department

OIL CONSERVATION DIVISION
 2040 South Pacheco
 Santa Fe, NM 87505

Form C-102
 Revised October 18, 1994
 Instructions on back
 Submit to Appropriate District Office
 State Lease - 4 Copies
 Fee Lease - 3 Copies

AMENDED REPORT

WELL LOCATION AND ACREAGE DEDICATION PLAT

¹ APT Number 30-039-26338	² Pool Code 71599	³ Pool Name Basin Dakota
⁴ Property Code 009257	⁵ Property Name SAN JUAN 29-6 UNIT	
⁷ OGRID No. 017654	⁶ Operator Name PHILLIPS PETROLEUM COMPANY	⁸ Well Number 101M
		⁹ Elevation 6492'

¹⁰ Surface Location

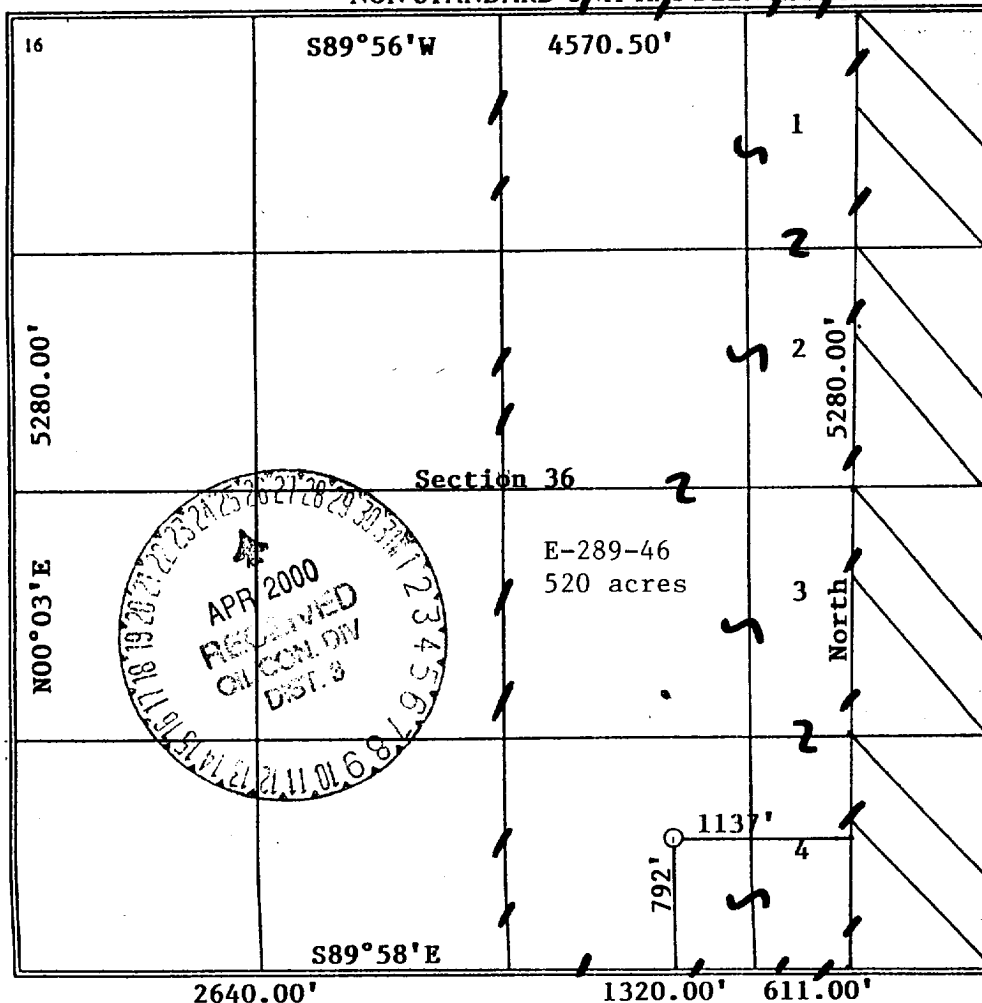
Ul. or lot no.	Section	Township	Range	Lot Idn	Feet from the	North/South line	Feet from the	East/West line	County
0	36	29N	6W		792'	SOUTH	1137'	EAST	RIO ARRIBA

¹¹ Bottom Hole Location If Different From Surface

Ul. or lot no.	Section	Township	Range	Lot Idn	Feet from the	North/South line	Feet from the	East/West line	County
0									

¹² Dedicated Acres	¹³ Joint or Infill	¹⁴ Consolidation Code	¹⁵ Order No.
234.16 E/2	I	U	

NO ALLOWABLE WILL BE ASSIGNED TO THIS COMPLETION UNTIL ALL INTERESTS HAVE BEEN CONSOLIDATED OR A NON-STANDARD UNIT HAS BEEN APPROVED BY THE DIVISION



¹⁷ OPERATOR CERTIFICATION

I hereby certify that the information contained herein is true and complete to the best of my knowledge and belief

Patsy Clugston
 Signature

Patsy Clugston
 Printed Name

Sr. Regulatory Clerk
 Title

4-24-00
 Date

Date

¹⁸ SURVEYOR CERTIFICATION

I hereby certify that the well location shown on this plat was plotted from field notes of actual surveys made by me or under my supervision, and that the same is true and correct to the best of my belief.

04/18/2000
 Date of Survey

Signature and Seal of Professional Surveyor:

Henry P. Broadhurst, Jr.
 Seal: HENRY P. BROADHURST, JR. NEW MEXICO PROFESSIONAL SURVEYOR
 Certificate Number 1399

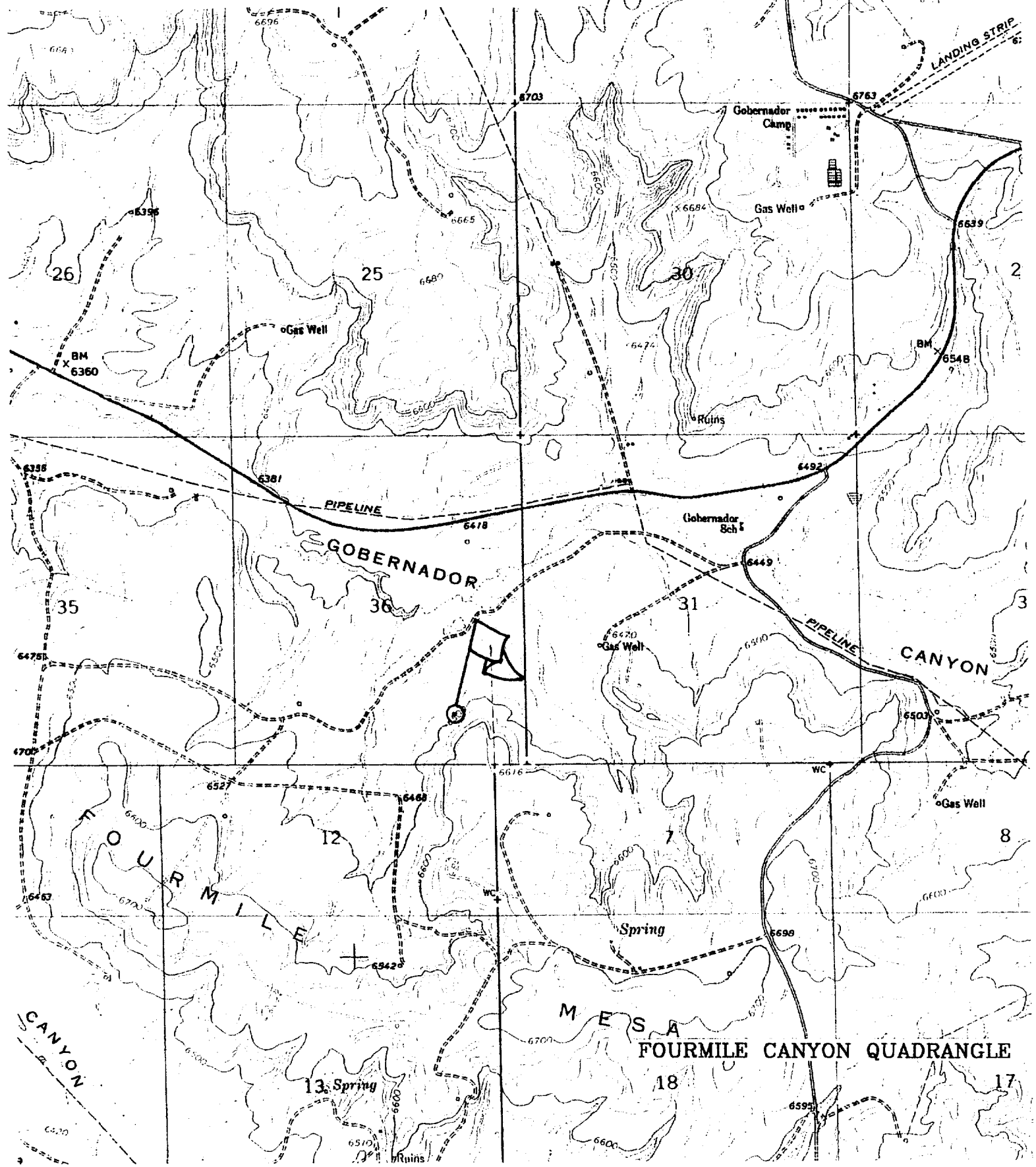
SAN JUAN 29-6 UNIT No. 101M

792' FSL, 1137' FEL

SE/4 SEC. 36, T-29-N, R-06-W, N.M.P.M.,

RIO ARRIBA COUNTY, NEW MEXICO

GROUND LEVEL ELEVATION: 6492'



FOURMILE CANYON QUADRANGLE