

District I
PO Box 1980, Hobbs, NM 88241-1980
District II
811 S. 1st Street, Artesia, NM 88210-2834
District III
1000 Rio Brazos Rd., Aztec, NM 87410
District IV
2040 South Pacheco, Santa Fe, NM 87505

State of New Mexico
Energy, Minerals & Natural Resources Department

OIL CONSERVATION DIVISION
2040 South Pacheco
Santa Fe, NM 87505

Form C-101
Revised October 18, 1994
Instructions on back
Submit to Appropriate District Office
State Lease - 6 Copies
Fee Lease - 5 Copies

☐ AMENDED REPORT

APPLICATION FOR PERMIT TO DRILL, RE-ENTER, DEEPEN, PLUGBACK, OR ADD A ZONE

¹ Operator name and Address Phillips Petroleum Company 5525 Highway 64, NBU 3004 Farmington, NM 87401		² OGRID Number 017654
⁴ Property Code 009257	⁵ Property Name San Juan 29-6 Unit	³ API Number 39-26339 ⁶ Well No. 94M

⁷ Surface Location

UL or lot no.	Section	Township	Range	Lot. Idn	Feet from the	North/South Line	Feet from the	East/West line	County
F	16	29N	6W		2370'	North	1845'	West	Rio Arriba

⁸ Proposed Bottom Hole Location If Different From Surface

UL or lot no.	Section	Township	Range	Lot. Idn	Feet from the	North/South Line	Feet from the	East/West line	County
F									

⁹ Proposed Pool 1 Basin Dakota 71599	¹⁰ Proposed Pool 2 Blanco Mesaverde 72319
--	---

¹¹ Work Type Code N	¹² Well Type Code M	¹³ Cable/Rotary R	¹⁴ Lease Type Code S	¹⁵ Ground Level Elevation 6527'
¹⁶ Multiple Y	¹⁷ Proposed Depth 7904'	¹⁸ Formation Dakota	¹⁹ Contractor 4CAT-Key Energy	²⁰ Spud Date 1st Qtr 2000

²¹ Proposed Casing and Cement Program

Hole Size	Casing Size	Casing weight/foot	Setting Depth	Sacks of Cement	Estimated TOC
12-1/4"	9-5/8"	36#, J/K-55	320' *	159 sx Type 3	Surface
8-3/4"	7"	20#, J/K-55	3834'	352 sx Type 3	Surface
				T-100 sx Type 3	
6-1/4"	4-1/2"	11.6#, N-80	7904	246 sx C1 H	**

²² Describe the proposed program. If this application is to DEEPEN or PLUG BACK give the data on the present productive zone and proposed new productive zone. Describe the blowout prevention program, if any. Use additional sheets if necessary

* The surface casing will be set at a minimum of 320', but could be set deeper if required to maintain hole stability.

** The cement for the 4-1/2" casing is designed to cover 100' above the Cliffhouse Sandstone. Circulation/squeeze cementing will be conducted to isolate the Lewis Shale interval prior to its completion.

See attached details for the cathodic protection for this well.

²³ I hereby certify that the information given above is true and complete to the best of my knowledge and belief

Signature:

Printed name:

Title: Sr. Regulatory/Proration Clerk

OIL CONSERVATION DIVISION

Approved by:

Title:

Approval Date: FEB - 2 2000 Expiration Date: FEB - 2 2001

District I
(P) Box 1980, Hobbs, NM 88241-1980
District II
111 South First, Artesia, NM 88210
District III
1000 Rio Brazos Rd., Aztec, NM 87410
District IV
2040 South Pacheco, Santa Fe, NM 87505

State of New Mexico
Energy, Minerals & Natural Resources Department

OIL CONSERVATION DIVISION
2040 South Pacheco
Santa Fe, NM 87505

Form C-102
Revised October 18, 1994
Instructions on back
Submit to Appropriate District Office
State Lease - 4 Copies
Fee Lease - 3 Copies

☐ AMENDED REPORT

WELL LOCATION AND ACREAGE DEDICATION PLAT

1 API Number 30 039-26339		2 Pool Code 72319		3 Pool Name Blanco Mesaverde		
4 Property Code 009257		5 Property Name SAN JUAN 29-6 UNIT			6 Well Number 94M	
7 OGRID No. 017654		8 Operator Name PHILLIPS PETROLEUM COMPANY			9 Elevation 6527'	

10 Surface Location

UL or lot no. F	Section 16	Township 29N	Range 6W	Lot Idn	Feet from the 2370'	North/South line NORTH	Feet from the 1845'	East/West line WEST	County RIO ARriba
--------------------	---------------	-----------------	-------------	---------	------------------------	---------------------------	------------------------	------------------------	----------------------

11 Bottom Hole Location If Different From Surface

UL or lot no. F	Section	Township	Range	Lot Idn	Feet from the	North/South line	Feet from the	East/West line	County
--------------------	---------	----------	-------	---------	---------------	------------------	---------------	----------------	--------

12 Dedicated Acres 320 W/2	13 Joint or Infill I	14 Consolidation Code U	15 Order No.
-------------------------------	-------------------------	----------------------------	--------------

NO ALLOWABLE WILL BE ASSIGNED TO THIS COMPLETION UNTIL ALL INTERESTS HAVE BEEN CONSOLIDATED OR A NON-STANDARD UNIT HAS BEEN APPROVED BY THE DIVISION

16 N89°55'E 5281.32' E-289-46 520 acres 2370' 1845' Section 16 N00°01'E N89°54'E 5278.68'		17 OPERATOR CERTIFICATION I hereby certify that the information contained herein is true and complete to the best of my knowledge and belief Signature Patsy Clugston Printed Name Sr. Regulatory Clerk Title January 18, 2000 Date	
		18 SURVEYOR CERTIFICATION I hereby certify that the well location shown on this plat was plotted from field notes of actual surveys made by me or under my supervision, and that the same is true and correct to the best of my belief. 11/18/99 Date of Survey Signature and Seal of Professional Surveyor Certificate Number	

District I
PO Box 1980, Hobbs, NM 88241-1980
District II
811 South First, Artesia, NM 88210
District III
1000 Rio Brazos Rd., Aztec, NM 87410
District IV
2040 South Pacheco, Santa Fe, NM 87505

State of New Mexico
Energy, Minerals & Natural Resources Department

OIL CONSERVATION DIVISION
2040 South Pacheco
Santa Fe, NM 87505

Form C-102
Revised October 18, 1994
Instructions on back
Submit to Appropriate District Office
State Lease - 4 Copies
Fee Lease - 3 Copies

☐ AMENDED REPORT

WELL LOCATION AND ACREAGE DEDICATION PLAT

1 API Number 30-039-26339		1 Pool Code 71599		1 Pool Name Basin Dakota	
4 Property Code 009257		5 Property Name SAN JUAN 29-6 UNIT			6 Well Number 94M
7 OGRID No. 017654		8 Operator Name PHILLIPS PETROLEUM COMPANY			9 Elevation 6527'

10 Surface Location

UL or lot no.	Section	Township	Range	Lot Idn	Feet from the	North/South line	Feet from the	East/West line	County
F	16	29N	6W		2370'	NORTH	1845'	WEST	RIO ARriba

11 Bottom Hole Location If Different From Surface

UL or lot no.	Section	Township	Range	Lot Idn	Feet from the	North/South line	Feet from the	East/West line	County
F	16	29N	6W		2370'	North	1845'	West	Rio Arriba

12 Dedicated Acres	13 Joint or Infill	14 Consolidation Code	15 Order No.
320 N/2	I	U	

NO ALLOWABLE WILL BE ASSIGNED TO THIS COMPLETION UNTIL ALL INTERESTS HAVE BEEN CONSOLIDATED OR A NON-STANDARD UNIT HAS BEEN APPROVED BY THE DIVISION

16		N89°55'E		5281.32'	
E-289-46 520 acres		2370'		5280.00'	
1845'		Section 16		N00°02'E	
N00°01'E		N89°54'E		5278.68'	

17 OPERATOR CERTIFICATION

I hereby certify that the information contained herein is true and complete to the best of my knowledge and belief

Patsy Clugston

Signature
Patsy Clugston

Printed Name
Sr. Regulatory Clerk

Title
January 19, 2000

Date

18 SURVEYOR CERTIFICATION

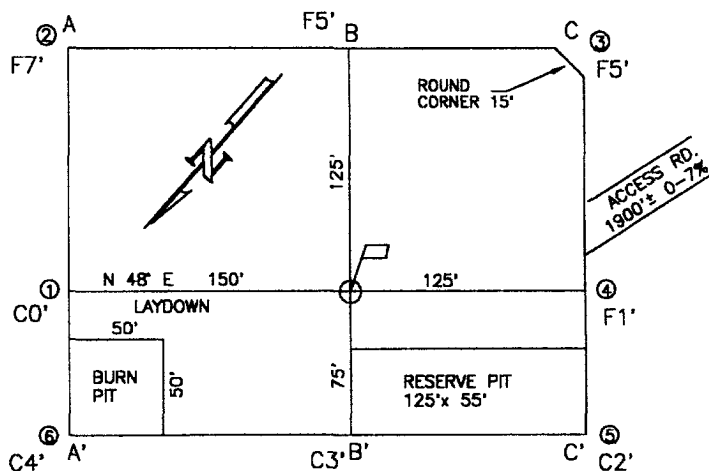
I hereby certify that the well location shown on this plat was plotted from field notes of actual surveys made by me or under my supervision, and that the same is true and correct to the best of my belief.

11/18/99
Date of Survey

Signature and Seal of Professional Surveyor

Certificate Number

NEW MEXICO
REGISTERED SURVEYOR
11303



A-A' ELEVATION

C/L

6547				
6537				
6527				
6517				
6507				

B-B'

C/L

6547				
6537				
6527				
6517				
6507				

C-C'

C/L

6547				
6537				
6527				
6517				
6507				

COMPANY: PHILLIPS PETROLEUM CO.

LEASE: SAN JUAN 29-6 UNIT No. 94M

FOOTAGE: 2370 FNL 1845 FWL UNIT F

SEC. 16 TWN. 29 N RNG. 6 W N.M.P.M.

COUNTY: RIO ARRIBA STATE: N.M.

ELEVATION: 6527

LATITUDE: 36-43-35

LONGITUDE: 107-28-14



PHILLIPS PETROLEUM CO.
FARMINGTON, NEW MEXICO

SURVEYED: 11/18/99

REV. DATE:

APP. BY

DRAWN BY: K.REA

DATE DRAWN: 11/21/99

FILE NAME: UFO21

UNITED
FIELD SERVICES INC.

P.O. BOX 3651
FARMINGTON, NM 87499
OFFICE: (505)334-0408

PHILLIPS PETROLEUM COMPANY

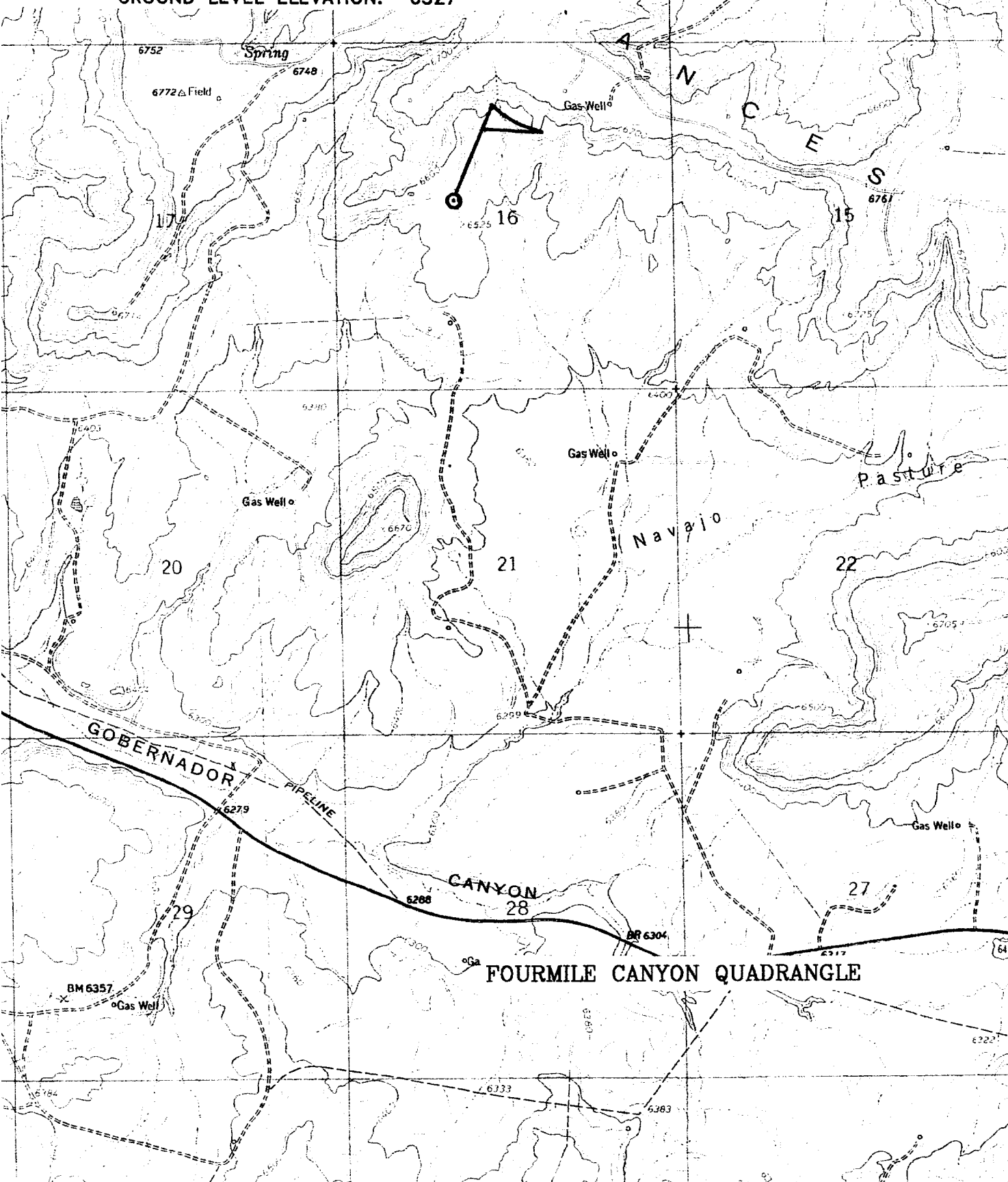
SAN JUAN 29-6 UNIT No. 94M

2370' FNL, 1845' FWL

NW/4 SEC. 16, T-29-N, R-06-W, N.M.P.M.,

RIO ARriba COUNTY, NEW MEXICO

GROUND LEVEL ELEVATION: 6527'



GEOLOGIC PROGNOSIS

Company: **Phillips Petroleum Company**
 Project: **2000 Drilling Plan**
 Area: **San Juan 29-6 Unit**

Operator: **Phillips Petroleum Company**
 Well Name: **San Juan 29-6 Unit No. 94M (Kmv/Kd)**
 Location: **SENW 16-29N-06W**
 Footage: **2370' FNL & 1845' FWL**
 County/State: **Rio Arriba/New Mexico**

Surveyed GL: **6527** Est (12') KB: **6539**

<u>Formation</u>	<u>Thickness</u>	<u>Depth</u>	<u>Struct. Elev.</u>
San Jose Fm.	1329	Surface	6527
Nacimiento Fm.	1190	1329	5210
Ojo Alamo Ss.	175	2519	4020
Kirtland Sh.	360	2694	3845
Fruitland Fm.	355	3054	3485
Pictured Cliffs Ss.	265	3409	3130
Lewis Sh.	160	3674	2865
<u>Int. Csg. Depth</u>	1345	3834	2705
Cliff House Ss.	90	5179	1360
Menefee Fm.	305	5269	1270
Point Lookout Ss.	335	5574	965
Mancos Sh.	925	5909	630
Gallup Ss.	730	6834	-295
Greenhorn Ls.	55	7564	-1025
Graneros Sh.	135	7619	-1080
Dakota Ss.	150	7754	-1215
Total Depth	NA	7904	-1365

Mechanical Logs: Cased hole logs only

Correlation Logs: San Juan 29-6 Unit #94 (SWSW 16-29N-06W)
 San Juan 29-6 Unit #93 (NWNE 16-29N-06W)

Estimated intervals of water, oil and gas:

Water:	Ojo Alamo Ss.	2519-2694
Gas & Water:	Fruitland Fm.	3054-3409
Gas:	Mesaverde Gp.	5179-5909
	Dakota Ss.	7754-7904

San Juan 29-6 Unit #94M (DK/MV)

SURFACE CASING :

Drill Bit Diameter	12.25 "	
Casing Outside Diameter	9.625 "	8.913
Casing Weight	36 ppf	
Casing Grade	J-55	
Shoe Depth	320 '	
Cement Yield	1.41 cuft/sk	
Excess Cement	110 %	

Hole / Casing Annulus Capacity 0.0558 bbl/f 0.3132 cuft/ft

Cement Required 158.5 sx

SHOE 320 ', 9.625 ", 36 ppf, J-55

INTERMEDIATE CASING :

Drill Bit Diameter	8.75 "	
Casing Outside Diameter	7 "	6.455
Casing Weight	20 ppf	
Casing Grade	J-55	
Shoe Depth	3834 '	
Lead Cement Yield	2.9 cuft/sk	
Lead Cement Excess	110 %	
Tail Cement Length	446.5 '	
Tail Cement Yield	1.41 cuft/sk	
Tail Cement Excess	110 %	

Casing / Casing Annulus Capacity 0.0296 bbl/f 0.1660 cuft/ft

Hole / Casing Annulus Capacity 0.0268 bbl/f 0.1503 cuft/ft

Casing Capacity 0.0405 bbl/f 0.2272 cuft/ft

Lead Cement Required 352.2 sx

Tail Cement Required 100.0 sx

SHOE 3834 ', 7 ", 20 ppf, J-55

PRODUCTION CASING :

Drill Bit Diameter	6.25 "	
Casing Outside Diameter	4.5 "	4.000
Casing Weight	11.6 ppf	
Casing Grade	N-80	
Top of Cement	5079 '	100' above top of Cliff House
Shoe Depth	7904 '	
Cement Yield	2.13 cuft/sk	
Cement Excess	60 %	

Casing / Casing Annulus Capacity 0.0208 bbl/f 0.1168 cuft/ft

Hole / Casing Annulus Capacity 0.0183 bbl/f 0.1026 cuft/ft

Casing Capacity 0.0155 bbl/f 0.0872 cuft/ft

Cement Required 246.2 sx

SHOE 7904 ', 4.5 ", 11.6 ppf, N-80

San Juan 29-6 Unit #94M
E-289-46; Unit F, 2370' FNL & 1845' FWL
Section 16, T29N, R6W; Rio Arriba County, NM

Cathodic Protection

Phillips proposes to drill a cathodic protection deep well groundbed for the subject well. Will drill a 6-7/8" hole to an anticipated minimum depth of 300' (maximum depth of 500'). Cement plugs will not be used unless more than one water zone is encountered. Prior drilling history for the area indicates only one zone to that depth. If more than one water zone is encountered, notification will be made and details of cement and casing will be provided.

All drilling activity will remain on existing well pad and a Farmington based company will be doing the drilling for Phillips.