

District I  
1625 N. French Dr., Hobbs, NM 88240  
District II  
811 S. 1st Street, Artesia, NM 88210  
District III  
1000 Rio Brazos Rd., Aztec, NM 87410  
District IV  
2040 South Pacheco, Santa Fe, NM 87505

State of New Mexico  
Energy, Minerals & Natural Resources

Form C-101  
Revised March 17, 1999

Oil Conservation Division  
2040 South Pacheco  
Santa Fe, NM 87505

Submit to appropriate District Office  
State Lease - 6 Copies  
Fee Lease - 5 Copies

☐ AMENDED REPORT

**APPLICATION FOR PERMIT TO DRILL, RE-ENTER, DEEPEN, PLUGBACK, OR ADD A ZONE**

<sup>1</sup> Operator Name and Address Phillips Petroleum Company 5525 Highway 64, NBU 3004, Farmington, NM 87401		<sup>2</sup> OGRID Number 017654
<sup>4</sup> Property Code 009256	<sup>5</sup> Property Name San Juan 29-5 Unit	<sup>3</sup> API Number 30-039-26558
		<sup>6</sup> Well No. 13M

<sup>7</sup> Surface Location

UL or lot no.	Section	Township	Range	Lot. Idn	Feet from the	North/South Line	Feet from the	East/West line	County
0	30	29N	5W		1309'	South	1349	East	Rio Arriba

<sup>8</sup> Proposed Bottom Hole Location If Different From Surface

UL or lot no.	Section	Township	Range	Lot. Idn	Feet from the	North/South Line	Feet from the	East/West line	County
0									
<sup>9</sup> Proposed Pool 1 Blanco Mesaverde 72319					<sup>10</sup> Proposed Pool 2 Basin Dakota 71599				

<sup>11</sup> Work Type Code N	<sup>12</sup> Well Type Code M	<sup>13</sup> Cable/Rotary R	<sup>14</sup> Lease Type Code p	<sup>15</sup> Ground Level Elevation 6649'-GL
<sup>16</sup> Multiple Y	<sup>17</sup> Proposed Depth 8035'	<sup>18</sup> Formation Dakota	<sup>19</sup> Contractor Key Energy	<sup>20</sup> Spud Date 1/13/01

<sup>21</sup> Proposed Casing and Cement Program

Hole Size	Casing Size	Casing weight/foot	Setting Depth	Sacks of Cement	Estimated TOC
12-1/4"	9-5/8"	32.3#, H-40	320'*	158.5 sx	surface
8-3/4"	7"	20#, J/K-55	3826'	L-459 sx:T-50sx	surface
6-1/4"	4-1/2"	11.6#, N-80	8035'—	330 sx	**

<sup>22</sup> Describe the proposed program. If this application is to DEEPEN or PLUG BACK, give the data on the present productive zone and proposed new productive zone.

Describe the blowout prevention program, if any. Use additional sheets if necessary.

\* The surface casing will be set at a minimum of 320', but could be set deeper if required to maintain hole stability.

\*\* The Production String casing cement is designed to cover openhole section with 40% excess) and 100' inside the 7" shoe.

See attached for the details on the BOP program and the cathodic protection groundbed.

<sup>23</sup> I hereby certify that the information given above is true and complete to the best of my knowledge and belief.		OIL CONSERVATION DIVISION	
Signature: <i>Patsy Clugston</i>		Approved by: <i>[Signature]</i>	
Printed name: Patsy Clugston		Title: DEPUTY OIL & GAS INSPECTOR	
Title: Sr. Regulatory/Proration Clerk		Approval Date: NOV 14 2000 Expiration Date: NOV 14 2001	
Date: 11/9/00	Phone: 505-599-354	Conditions of Approval:	
		Attached <input type="checkbox"/>	

ingard show Fed -

coal only by Land States  
maps -

SH

16	S89°46'E	5289.24'		17 OPERATOR CERTIFICATION I hereby certify that the information contained herein is true and complete to the best of my knowledge and belief
5280.00'		SF-079851		Signature <i>Patsy Clugston</i> Patsy Clugston Printed Name Sr. Regulatory/Proration Clerk Title 11-9-00 Date
North	Section 30			18 SURVEYOR CERTIFICATION I hereby certify that the well location shown on this plat was plotted from field notes of actual surveys made by me or under my supervision, and that the same is true and correct to the best of my belief. 09/19/00 Date of Survey Signature and Seal of Professional Surveyor: <i>Henry P. Broadhurst Jr.</i> HENRY P. BROADHURST JR. NEW MEXICO REGISTERED SURVEYOR Certificate No. 13377
		FEE	1349' SF-078282	
	S89°44'E	5290.56'	1309'	

District I  
PO Box 1980, Hobbs, NM 88241-1980  
District II  
811 South First, Artesia, NM 88210  
District III  
1000 Rio Brazos Rd., Aztec, NM 87410  
District IV  
2040 South Pacheco, Santa Fe, NM 87505

State of New Mexico  
Energy, Minerals & Natural Resources Department

OIL CONSERVATION DIVISION  
2040 South Pacheco  
Santa Fe, NM 87505

Form C-102  
Revised October 18, 1994  
Instructions on back  
Submit to Appropriate District Office  
State Lease - 4 Copies  
Fee Lease - 3 Copies

☐ AMENDED REPORT

WELL LOCATION AND ACREAGE DEDICATION PLAT

<sup>1</sup> API Number 30-039-26558	<sup>2</sup> Pool Code 71599	<sup>3</sup> Pool Name Basin Dakota —
<sup>4</sup> Property Code 009256	<sup>5</sup> Property Name SAN JUAN 29-5 UNIT	<sup>6</sup> Well Number 13M
<sup>7</sup> OGRID No. 017654	<sup>8</sup> Operator Name PHILLIPS PETROLEUM COMPANY	<sup>9</sup> Elevation 6649'

<sup>10</sup> Surface Location

UL or lot no. 0	Section 30	Township 29N	Range 5W	Lot Idn	Feet from the 1309'	North/South line SOUTH	Feet from the 1349'	East/West line EAST	County RIO ARriba
--------------------	---------------	-----------------	-------------	---------	------------------------	---------------------------	------------------------	------------------------	----------------------

<sup>11</sup> Bottom Hole Location If Different From Surface

UL or lot no. 0	Section	Township	Range	Lot Idn	Feet from the	North/South line	Feet from the	East/West line	County
--------------------	---------	----------	-------	---------	---------------	------------------	---------------	----------------	--------

<sup>12</sup> Dedicated Acres 320 E/2	<sup>13</sup> Joint or Infill Y	<sup>14</sup> Consolidation Code U	<sup>15</sup> Order No.
--	------------------------------------	---------------------------------------	-------------------------

NO ALLOWABLE WILL BE ASSIGNED TO THIS COMPLETION UNTIL ALL INTERESTS HAVE BEEN CONSOLIDATED OR A NON-STANDARD UNIT HAS BEEN APPROVED BY THE DIVISION

16	S89°46'E	5289.24'							
5280.00'		SF-079851							
Section 30									
North									
		FEE	1309'	1349'					
	S89°44'E	5290.56'							

<sup>17</sup> OPERATOR CERTIFICATION

I hereby certify that the information contained herein is true and complete to the best of my knowledge and belief

*Patsy Clugston*  
Signature  
Patsy Clugston  
Printed Name  
Sr. Regulatory/Proration Clerk  
Title  
11/9/00  
Date

<sup>18</sup> SURVEYOR CERTIFICATION

I hereby certify that the well location shown on this plat was plotted from field notes of actual surveys made by me or under my supervision, and that the same is true and correct to the best of my belief.

09/19/00  
Date of Survey

Signature and Seal of Professional Surveyer:  
*Henry P. Broadhurst*  
Certificate Number

# LIPS PETROLEUM COMPANY

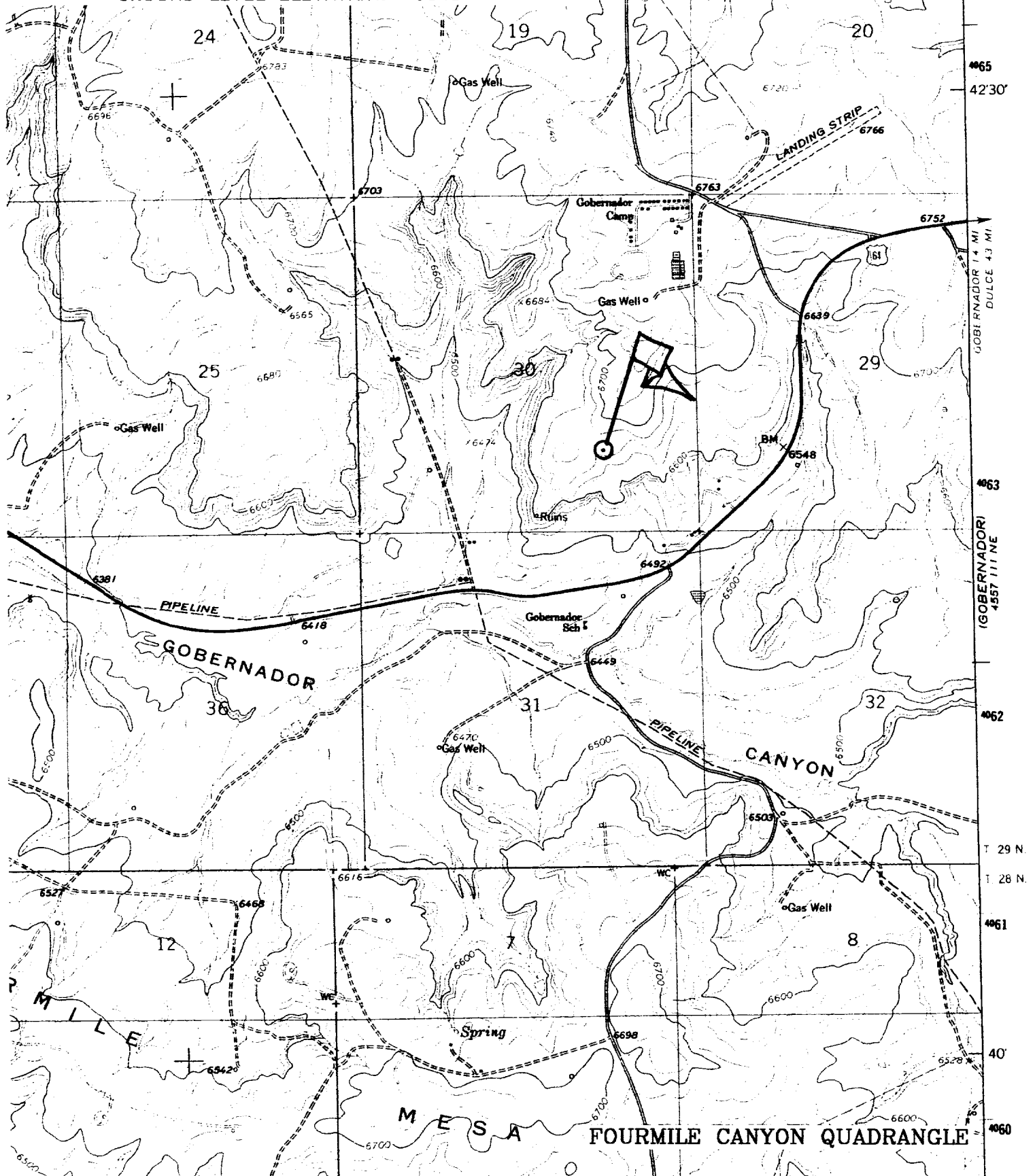
SAN JUAN 29-5 UNIT No. 13M

1309' FSL, 1349' FEL

SE/4 SEC. 30, T-29-N, R-05-W, N.M.P.M.,

RIO ARRIBA COUNTY, NEW MEXICO

GROUND LEVEL ELEVATION: 6649'



# ATTACHMENT 1

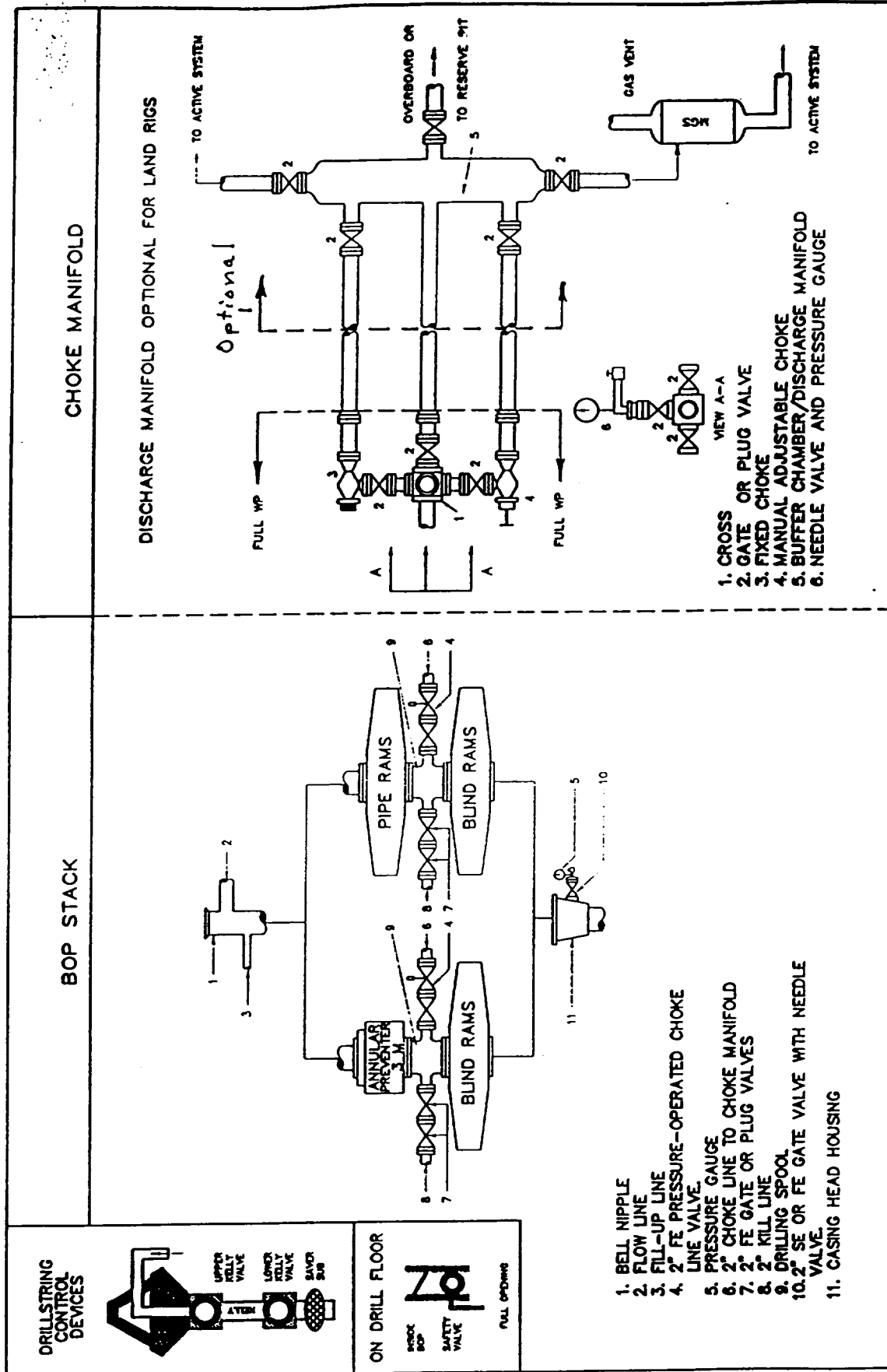


Fig. 2.4. Class 2 BOP and Choke Manifold.