

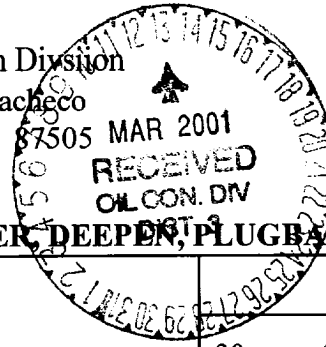
State of New Mexico
Energy, Minerals & Natural Resources

Form C-101
Revised March 17, 1999

District I
1625 N. French Dr., Hobbs, NM 88240
District II
811 S. 1st Street, Artesia, NM 88210
District III
1000 Rio Brazos Rd., Aztec, NM 87410
District IV
2040 South Pacheco, Santa Fe, NM 87505

Oil Conservation Division
2040 South Pacheco
Santa Fe, NM 87505

Submit to appropriate District Office
State Lease - 6 Copies
Fee Lease - 5 Copies



☐ AMENDED REPORT

APPLICATION FOR PERMIT TO DRILL, RE-ENTER, DEEPEN, PLUG BACK, OR ADD A ZONE

¹ Operator Name and Address Phillips Petroleum Company 5525 Highway 64, NBU 3004, Farmington, NM 87401		² OGRID Number 017654
⁴ Property Code 009257	⁵ Property Name San Juan 29-6 Unit	³ API Number 30- 039-26706
		⁶ Well No. #10B

⁷ Surface Location

UL or lot no.	Section	Township	Range	Lot. Idn	Feet from the	North/South Line	Feet from the	East/West line	County
A	2	29N	6W		1137'	North	811'	East	Rio Arriba

⁸ Proposed Bottom Hole Location If Different From Surface

UL or lot no.	Section	Township	Range	Lot. Idn	Feet from the	North/South Line	Feet from the	East/West line	County
A									
⁹ Proposed Pool 1 Blanco Mesaverde 72319					¹⁰ Proposed Pool 2				

¹¹ Work Type Code N	¹² Well Type Code G	¹³ Cable/Rotary R	¹⁴ Lease Type Code State -E- 289-51-	¹⁵ Ground Level Elevation 6489'
¹⁶ Multiple N	¹⁷ Proposed Depth 5917'	¹⁸ Formation Mesaverde	¹⁹ Contractor Key Energy	²⁰ Spud Date End of 1st Qtr 2001

²¹ Proposed Casing and Cement Program

Hole Size	Casing Size	Casing weight/foot	Setting Depth	Sacks of Cement	Estimated TOC
12-1/4"	9-5/8"	32.3#, H-40	320' *	158.5 sx	surface —
8-3/4"	7"	20#, J/K-55	3668'	L-440sx; T-50sx	surface —
6-1/4"	4-1/2"	11.6#, N/I-80	5917' —	179.6 sx	**

²² Describe the proposed program. If this application is to DEEPEN or PLUG BACK, give the data on the present productive zone and proposed new productive zone.

Describe the blowout prevention program, if any. Use additional sheets if necessary.

* The surface casing will be set at a minimum of 320', but could be set deeper if required to maintain hole stability.

** The Production String casing cement is designed to cover openhole section with 40% excess and 100' inside the 7" shoe.

See attached for the details onf the BOP program and the cathodic protection groundbed.

²³ I hereby certify that the information given above is true and complete to the best of my knowledge and belief.

Signature:

Printed name: Patsy Clugston

Title: Sr. Regulatory/Proration Clerk

Date: 3/9/01

Phone: 505-599-3454

OIL CONSERVATION DIVISION

Approved by:

Title: DEPUTY OIL & GAS INSPECTOR, DIST. 43

Approval Date: MAR 13 2001

Expiration Date: MAR 13 2002

Conditions of Approval:

Attached ☐

District I
P.O. Box 1980, Hobbs, NM 88241-1980
District II
811 South First, Artesia, NM 88210
District III
1000 Rio Brazos Rd., Aztec, NM 87410
District IV
2040 South Pacheco, Santa Fe, NM 87505

State of New Mexico
Energy, Minerals & Natural Resources Department

OIL CONSERVATION DIVISION
2040 South Pacheco
Santa Fe, NM 87505

Form C-102
Revised October 18, 1994

Instructions on back
Submit to Appropriate District Office
State Lease - 4 Copies
Fee Lease - 3 Copies

☐ AMENDED REPORT

WELL LOCATION AND ACREAGE DEDICATION PLAT

¹ API Number 30039-26706	² Pool Code 72319	³ Pool Name Blanco Mesaverde
⁴ Property Code 009257	⁵ Property Name SAN JUAN 29-6 UNIT	⁶ Well Number 10B
⁷ OGRID No. 017654	⁸ Operator Name PHILLIPS PETROLEUM COMPANY	⁹ Elevation 6489'

¹⁰ Surface Location

UL or lot no.	Section	Township	Range	Lot Idn	Feet from the	North/South line	Feet from the	East/West line	County
A	2	29N	6W		1137'	NORTH	811'	EAST	RIO ARriba

¹¹ Bottom Hole Location If Different From Surface

UL or lot no.	Section	Township	Range	Lot Idn	Feet from the	North/South line	Feet from the	East/West line	County
A									

¹² Dedicated Acres 319.23 E/2	¹³ Joint or Infill I	¹⁴ Consolidation Code U	¹⁵ Order No. .
---	------------------------------------	---------------------------------------	------------------------------

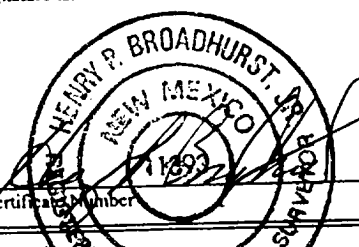
NO ALLOWABLE WILL BE ASSIGNED TO THIS COMPLETION UNTIL ALL INTERESTS HAVE BEEN CONSOLIDATED OR A NON-STANDARD UNIT HAS BEEN APPROVED BY THE DIVISION

16	S89°58'W	5280.00'	E-289-51 120 acres	5
8	7	6	• 10	1137'
5264.82'			E-289-52	811'
S00°12'E				5268.12'
				S00°09'W
				5281.32'
	S89°45'E		• 10A	

17 OPERATOR CERTIFICATION
I hereby certify that the information contained herein is true and complete to the best of my knowledge and belief

Patsy Clugston
Signature
Patsy Clugston
Printed Name
Sr. Regulatory/Proration Clerk
Title
March 9, 2001
Date

18 SURVEYOR CERTIFICATION
I hereby certify that the well location shown on this plat was plotted from field notes of actual surveys made by me or under my supervision, and that the same is true and correct to the best of my belief.

02/23/01
Date of Survey
Signature and Seal of Professional Surveyer:


PHILLIPS PETROLEUM COMPANY

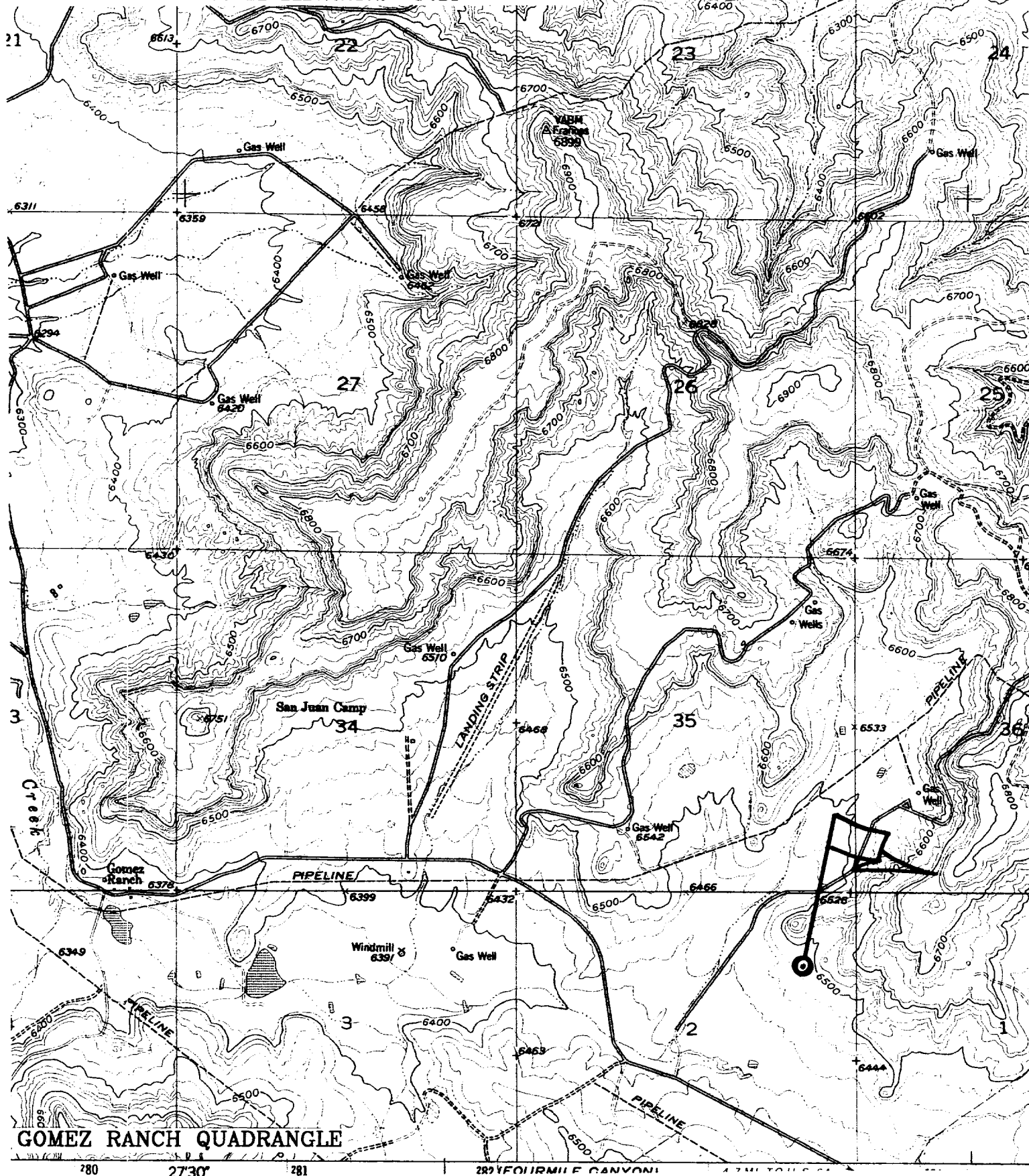
SAN JUAN 29-6 UNIT No. 10B

1137' FNL, 811' FEL

NE/4 SEC. 2, T-29-N, R-06-W, N.M.P.M.,

RIO ARriba COUNTY, NEW MEXICO

GROUND LEVEL ELEVATION: 6489'



ATTACHMENT 1

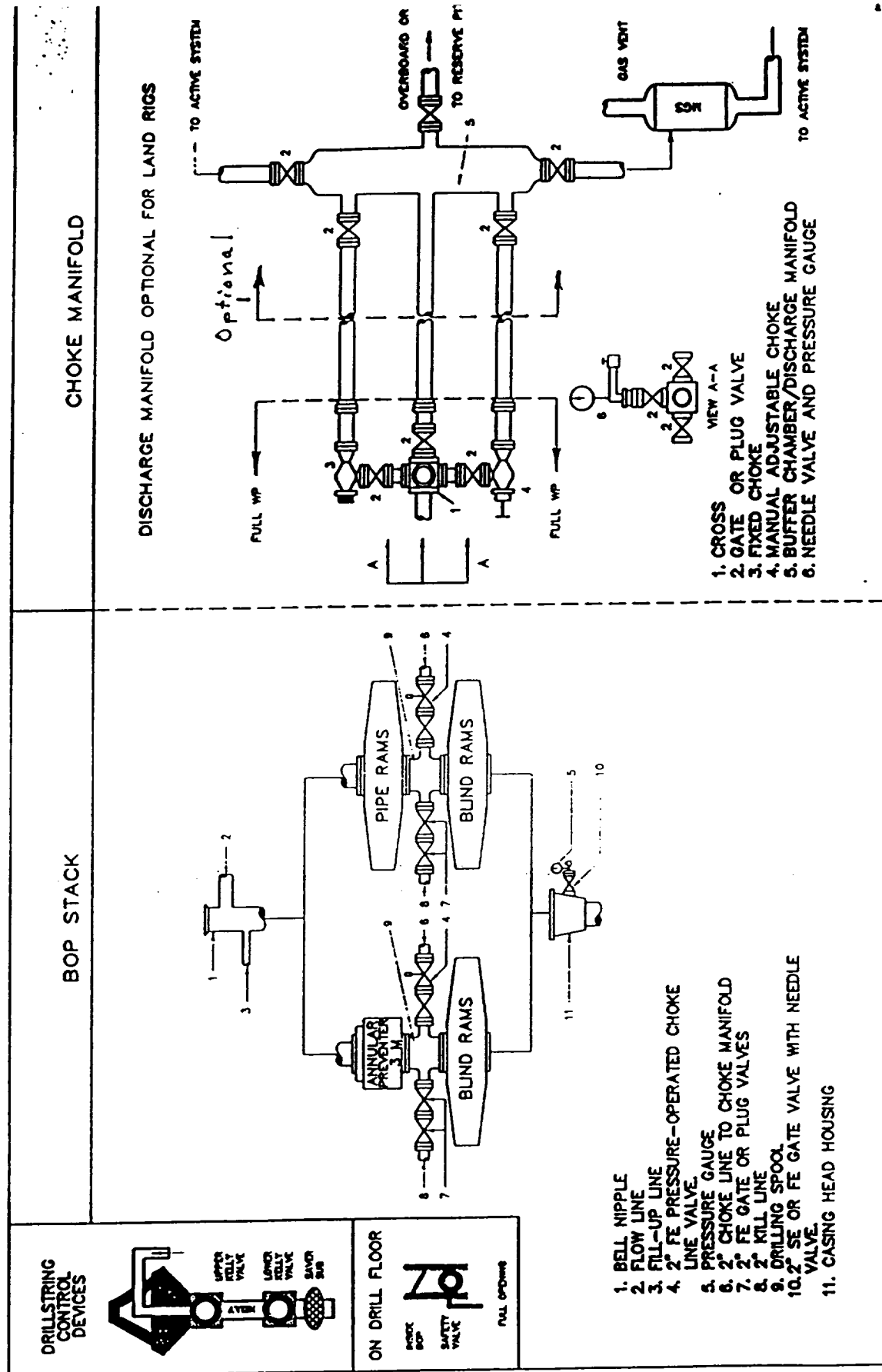


Fig. 2.4. Class 2 BOP and Choke Manifold.