

State of New Mexico
Energy, Minerals & Natural Resources

Form C-101
Revised March 17, 1999

District I
1625 N. French Dr., Hobbs, NM 88240
District II
811 S. 1st Street, Artesia, NM 88210
District III
1000 Rio Brazos Rd., Aztec, NM 87410
District IV
2040 South Pacheco, Santa Fe, NM 87505

Oil Conservation Division
2040 South Pacheco
Santa Fe, NM 87505

Submit to appropriate District Office
State Lease - 6 Copies
Fee Lease - 5 Copies

☐ AMENDED REPORT

APPLICATION FOR PERMIT TO DRILL, RE-ENTER, DEEPEN, PLUGBACK, OR ADD A ZONE

¹ Operator Name and Address Phillips Petroleum Company 5525 Highway 64, NBU 3004		² OGRID Number 017654
⁴ Property Code 009257	⁵ Property Name San Juan 29-6 Unit	³ APL Number 30- 039- 26799
		⁶ Well No. 25C

⁷ Surface Location

UL or lot no.	Section	Township	Range	Lot. Idn	Feet from the	North/South Line	Feet from the	East/West line	County
A	32	29N	6W		420'	North	795	East	Rio Arriba

⁸ Proposed Bottom Hole Location If Different From Surface

UL or lot no.	Section	Township	Range	Lot. Idn	Feet from the	North/South Line	Feet from the	East/West line	County
A									

⁹ Proposed Pool 1 Blanco Mesaverde	¹⁰ Proposed Pool 2 72319
--	--

¹¹ Work Type Code N	¹² Well Type Code G	¹³ Cable/Rotary R	¹⁴ Lease Type Code S-E-289-3	¹⁵ Ground Level Elevation 6471'
¹⁶ Multiple N	¹⁷ Proposed Depth 5968'	¹⁸ Formation MV	¹⁹ Contractor Key Energy	²⁰ Spud Date 4th Qtr 2001

²¹ Proposed Casing and Cement Program

Hole Size	Casing Size	Casing weight/foot	Setting Depth	Sacks of Cement	Estimated TOC
12-1/4"	9-5/8"	32.3#, J/K-55	320'	197.7 sx	Surface -
8-3/4"	7"	20, J/K-55	3673'	L-461.8 sx	
				T-50 sx	Surface -
6-1/4"	4-1/2"	11.6# J-55	5968' —	L-145.2 sx	** —
				T-20 sx	

²² Describe the proposed program. If this application is to DEEPEN or PLUG BACK, give the data on the present productive zone and proposed new productive zone.

Describe the blowout prevention program, if any. Use additional sheets if necessary.

* The surface casing will be set at a minimum of 320', but could be set deeper if required to maintain hole stability.

** The Production String casing cement is designed to cover openhole section with 50% excess and 200' inside the 7" shoe.

The BOP diagram is attached. There will be a cathodic protection groundbed on location also.

²³ I hereby certify that the information given above is true and complete to the best of my knowledge and belief.

Signature:

Printed name:

Title:

Date:

Phone:

8/20/01

505-599-3454

OIL CONSERVATION DIVISION

Approved by:

Title:

Approval Date:

Expiration Date:

Conditions of Approval:

Attached ☐

District I
1901 Box 1980, Hobbs, NM 88241-1980
District II
111 South First, Artesia, NM 88210
District III
1000 Rio Brazos Rd., Aztec, NM 87410
District IV
2040 South Pacheco, Santa Fe, NM 87505

State of New Mexico
Energy, Minerals & Natural Resources Department

OIL CONSERVATION DIVISION
2040 South Pacheco
Santa Fe, NM 87505

Form C-102
Revised October 18, 1994
Instructions on back
Submit to Appropriate District Office
State Lease - 4 Copies
Fee Lease - 3 Copies

☐ AMENDED REPORT

WELL LOCATION AND ACREAGE DEDICATION PLAT

1. APT Number 30-039-26799		2. Pool Code 72319		3. Pool Name Blanco Mesaverde		
4. Property Code 009257		5. Property Name SAN JUAN 29-6 UNIT			6. Well Number 25C	
7. OGRID No. 017654		8. Operator Name PHILLIPS PETROLEUM COMPANY			9. Elevation 6471'	

10. Surface Location

UL or lot no.	Section	Township	Range	Lot Idn	Feet from the	North/South line	Feet from the	East/West line	County
A	32	29N	6W		420'	NORTH	795'	EAST	RIO ARriba

11. Bottom Hole Location If Different From Surface

UL or lot no.	Section	Township	Range	Lot Idn	Feet from the	North/South line	Feet from the	East/West line	County
A									

12. Dedicated Acres	13. Joint or Infill	14. Consolidation Code	15. Order No.
320 E/2	I	U	

NO ALLOWABLE WILL BE ASSIGNED TO THIS COMPLETION UNTIL ALL INTERESTS HAVE BEEN CONSOLIDATED OR A NON-STANDARD UNIT HAS BEEN APPROVED BY THE DIVISION

<div>16</div> <div>N89°59'E</div> <div>5280.00'</div> <div></div> <div>Section 32</div> <div>589°58'W</div> <div>5280.00'</div>	<div>5282.64'</div> <div>E-289-3</div> <div>640 acres</div> <div>25'</div> <div>420'</div> <div>795'</div> <div>25C</div>	<div>17. OPERATOR CERTIFICATION</div> <div>I hereby certify that the information contained herein is true and complete to the best of my knowledge and belief</div> <div></div> <div>Signature</div> <div>Patsy Clugston</div> <div>Printed Name</div> <div>Regulatory Assistant</div> <div>Title</div> <div>November 5, 1999</div> <div>Date</div>
	<div>5280.00'</div> <div>N00°01'E</div> <div>5280.00'</div>	<div>E-289-52</div> <div>25'</div> <div>25'</div> <div>25'</div>

PHILLIPS PETROLEUM COMPANY

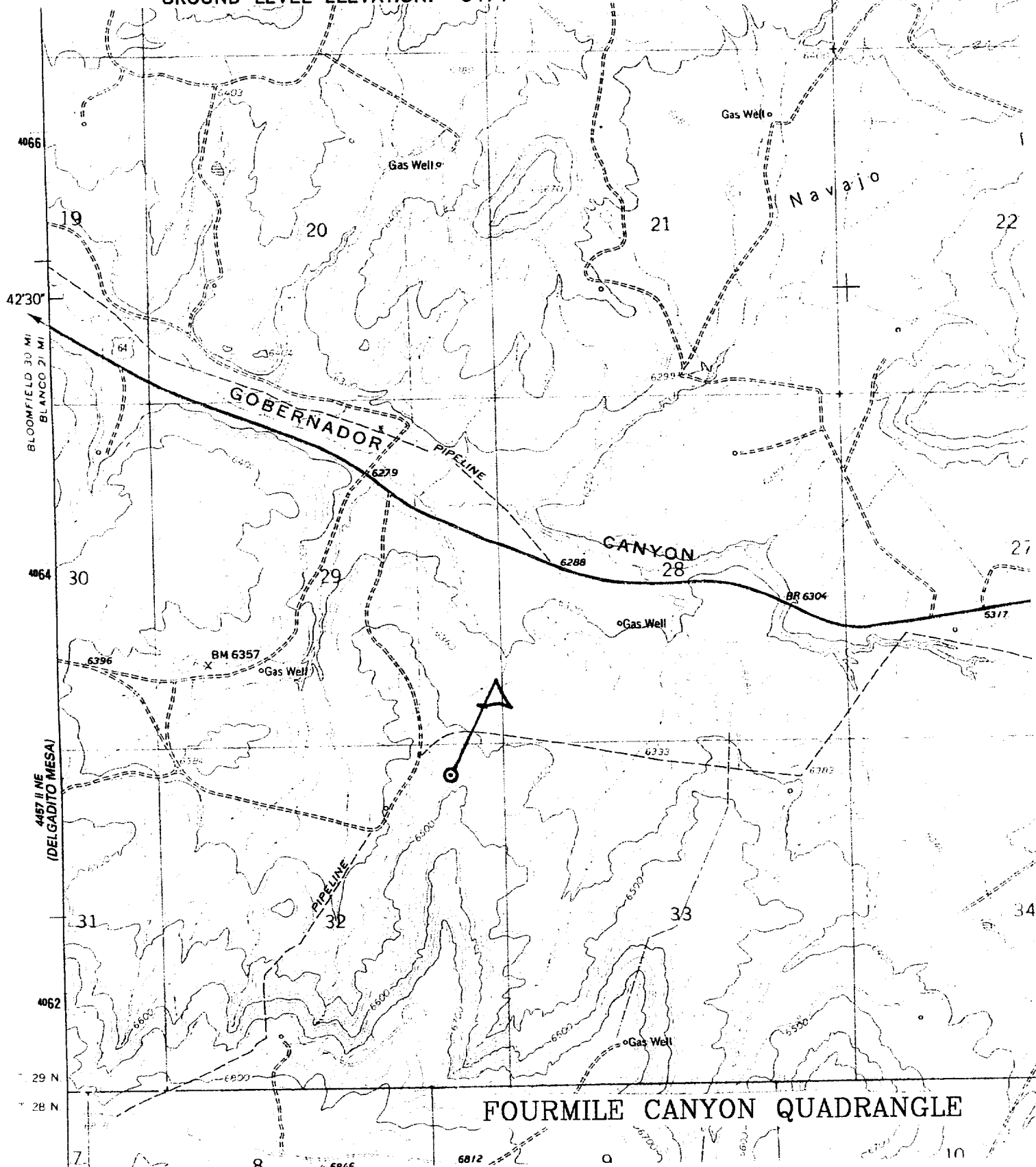
SAN JUAN 29-6 UNIT No. 25C

420' FNL, 795' FEL

NE/4 SEC. 32, T-29-N, R-06-W, N.M.P.M.,

RIO ARriba COUNTY, NEW MEXICO

GROUND LEVEL ELEVATION: 6471'



BOP AND RELATED EQUIPMENT CHECK LIST

3M SYSTEM:

2 hydr. rams (pipe & blind) or hydr. ram and annular with blind ram on bottom

Kill Line (2-inch minimum)

1 kill line valve (2-inch minimum)

1 choke line valve

2 chokes (refer to diagram in attachment 1) on choke manifold

Upper kelly cock valve in open position with handle available

Safety valve (in open position) and subs to fit all drill strings in use (with handle available)

Pressure gauged on choke manifold

2 inch minimum choke line

Fill-up line above the uppermost preventer

The BOPs will be pressure tested according to Onshore Order #2 III, A 1 and 30% safety factor.