

UNITED STATES
DEPARTMENT OF THE INTERIOR
GEOLOGICAL SURVEY

30-045-25556

APPLICATION FOR PERMIT TO DRILL, DEEPEN, OR PLUG BACK

1a. TYPE OF WORK

DRILL ☒DEEPEN ☐PLUG BACK ☐

b. TYPE OF WELL

OIL
WELL ☒GAS
WELL ☐

OTHER

SINGLE
ZONE ☒MULTIPLE
ZONE ☐

2. NAME OF OPERATOR

Raymond T. Duncan

3. ADDRESS OF OPERATOR

1777 S. Harrison, Penthouse #1, Denver, CO 80210

4. LOCATION OF WELL (Report location clearly and in accordance with any State requirements.)*

At surface

660' FNL & 1650' FWL

At proposed prod. zone

Section 14, T28N-R17W

14. DISTANCE IN MILES AND DIRECTION FROM NEAREST TOWN OR POST OFFICE*

14.4 miles southeast of Shiprock, New Mexico

15. DISTANCE FROM PROPOSED*

LOCATION TO NEAREST
PROPERTY OR LEASE LINE, FT.

(Also to nearest drlg. unit line, if any)

330'

16. NO. OF ACRES IN LEASE

1862

17. NO. OF ACRES ASSIGNED
TO THIS WELL

40

18. DISTANCE FROM PROPOSED LOCATION*

TO NEAREST WELL, DRILLING, COMPLETED,
OR APPLIED FOR, ON THIS LEASE, FT.

none

19. PROPOSED DEPTH

7550'

20. ROTARY OR CABLE TOOLS

Rotary

21. ELEVATIONS (Show whether DF, RT, GR, etc.)

5233' GR

22. APPROX. DATE WORK WILL START*

January 15, 1983

23.

PROPOSED CASING AND CEMENTING PROGRAM

SIZE OF HOLE	SIZE OF CASING	WEIGHT PER FOOT	SETTING DEPTH	QUANTITY OF CEMENT
17-1/2"	13-3/8"	48.0#	250'	Surface to circulate
7-7/8"	5-1/2"	15.5#	7550'	200 sx. or sufficient to cover zones of interest

Raymond T. Duncan proposes to drill a well to 7550' to test the Molas formation. If productive, casing will be set and the well completed. If dry, the well will be plugged and abandoned as per Minerals Management Service, State of New Mexico, and Bureau of Indian Affairs requirements.

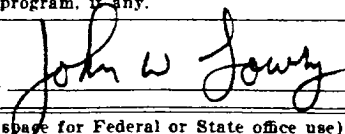
Possible zones of interest include the Dakota at 1286', Desert Creek at 6786', Barker Creek at 7041', and Molas at 7502'. Depending upon the DST results, our cement program will be adjusted to isolate the zones that show production potential.

OIL CON. DIV.
DIST. 3

IN ABOVE SPACE DESCRIBE PROPOSED PROGRAM: If proposal is to deepen or plug back, give data on present productive zone and proposed new productive zone. If proposal is to drill or deepen directionally, give pertinent data on subsurface locations and measured and true vertical depths. Give blowout preventer program, if any.

24.

SIGNED



TITLE

District Drilling &
Production Superintendent

DATE

12/29/82

(This space for Federal or State office use)

PERMIT NO.

APPROVAL DATE

APPROVED BY

TITLE

DATE

CONDITIONS OF APPROVAL, IF ANY:

OIL CON. DIV.
DIST. 3

OIL CONSERVATION DIVISION

P. O. BOX 2088

STATE OF NEW MEXICO
ENERGY AND MINERALS DEPARTMENT

SANTA FE, NEW MEXICO 87501

Form C-102
Revised 10-1-78

All distances must be from the outer boundaries of the Section.

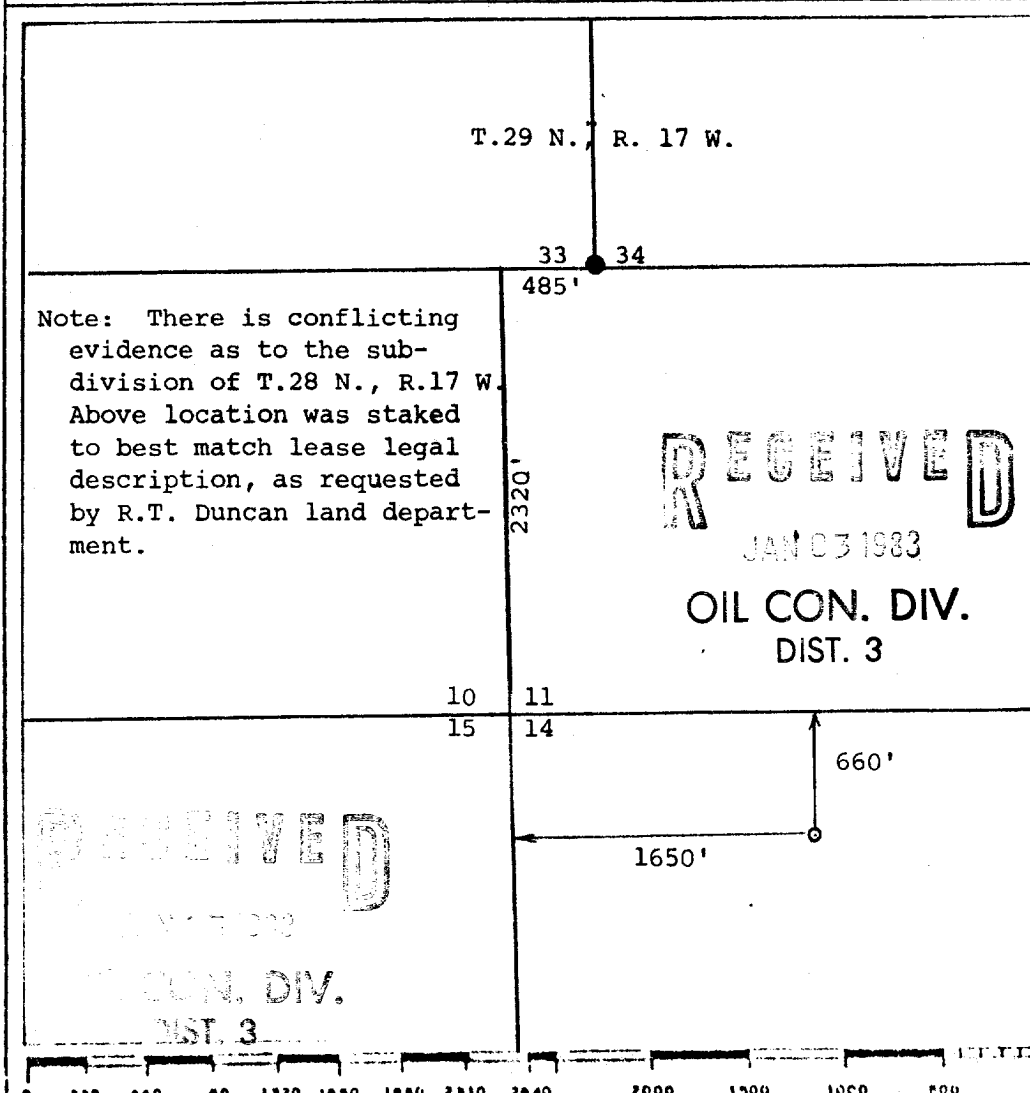
Operator R.T. Duncan		Lease Navajo 14		Well No. 1-1 1-1
Unit Letter	Section 14	Township 28 North	Range 17 West	County San Juan
Actual Footage Location of Well:				
660 feet from the North line and		1650' feet from the West line		
Ground Level Elev. 5233'	Producing Formation Pennsylvanian Paradox	Pool Wildcat	Dedicated Acreage: 80 40 Acres	

1. Outline the acreage dedicated to the subject well by colored pencil or hatchure marks on the plat below.
2. If more than one lease is dedicated to the well, outline each and identify the ownership thereof (both as to working interest and royalty).
3. If more than one lease of different ownership is dedicated to the well, have the interests of all owners been consolidated by communitization, unitization, force-pooling, etc?

☐ Yes ☐ No If answer is "yes," type of consolidation _____

If answer is "no," list the owners and tract descriptions which have actually been consolidated. (Use reverse side of this form if necessary.) _____

No allowable will be assigned to the well until all interests have been consolidated (by communitization, unitization, forced-pooling, or otherwise) or until a non-standard unit, eliminating such interests, has been approved by the Division.



CERTIFICATION

I hereby certify that the information contained herein is true and complete to the best of my knowledge and belief.

W. J. Fall

Name

Production Manager

Position

Raymond T. Duncan

Company

January 11, 1983

Date

I hereby certify that the well location shown on this plat was plotted from field notes of actual surveys made by me or under my supervision, and that the same is true and correct to the best of my knowledge and belief.

Date Surveyed

GERARD G. HUDDLESTON
REGISTERED PROFESSIONAL ENGINEER
IN CIVIL AND SURVEYING
6844

Certificate No.

6844

